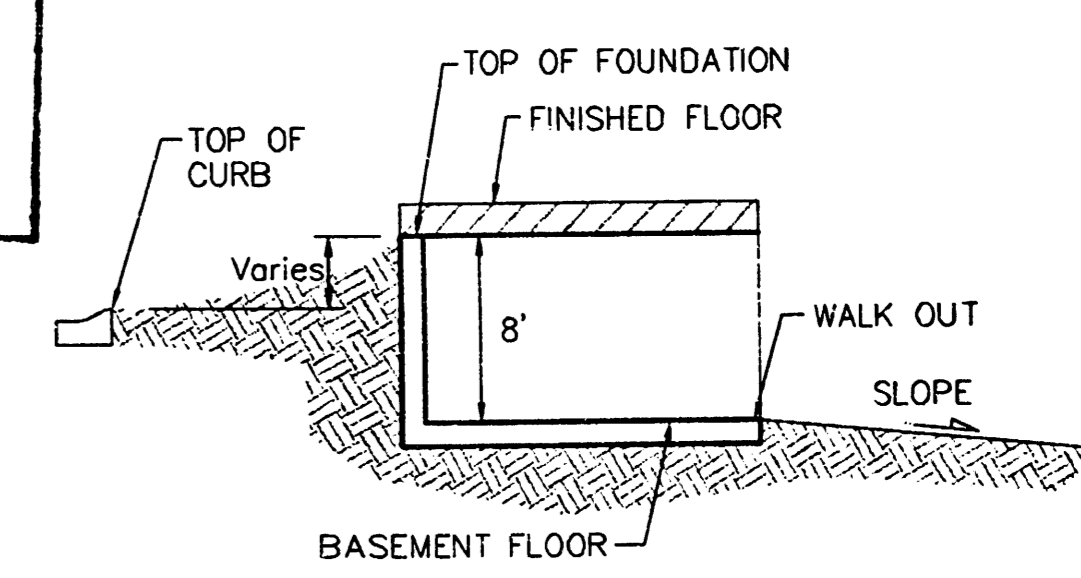
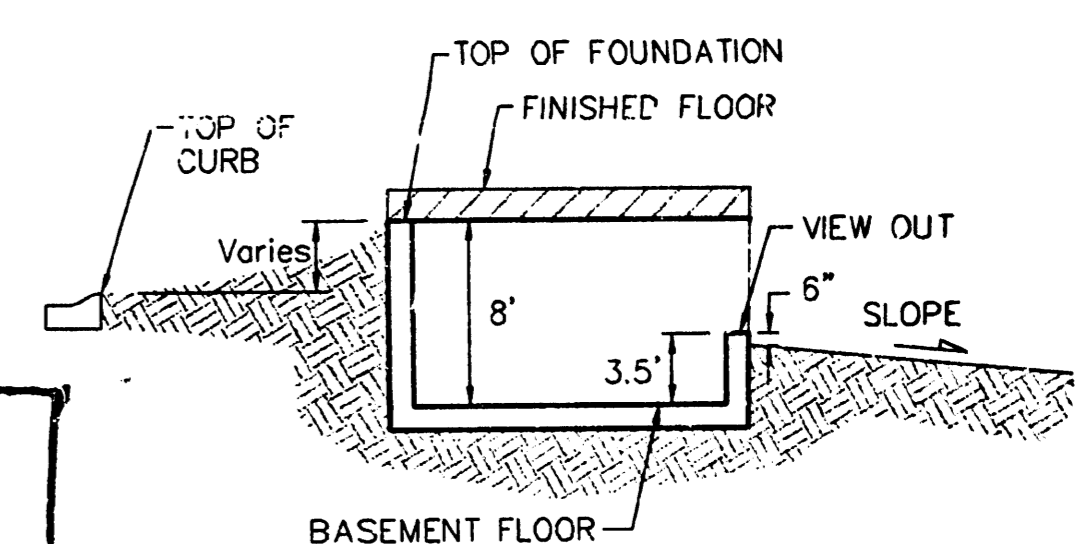


SCALE: 1" = 60'  
• = IRON

LOT	BLOCK	ELEVATION	
		CITY DATUM	NGVD
37-39, 41-44	A	205.0	1392.4
28-40, 43-46	C	201.0	1382.4
2	D	207.0	1394.4
3	D	206.0	1393.4
5	D	204.0	1391.4
6	D	203.0	1390.4
7	D	202.5	1389.9
8	D	201.5	1388.9
9	D	201.0	1388.4
10-11	D	200.5	1387.9
12	D	198.0	1385.4
13-17	D	19.5	1383.9
1	E	196.5	1383.9
2	E	200.5	1387.9
3	E	202.5	1389.9
4	E	206.0	1393.4

\* EXTRA DEEP FOUNDATION MAY BE REQUIRED

**APPROVED  
DRAINAGE PLAN**



REVISED 02/24/04 BY BDT LOT 36A JULY PAGE 3RD ADD  
REVISED 06/08/03 BY SCL LOT 36A (THE 3RD ADD)  
REVISED 03/21/03 BY BLP LOT 35A  
REVISED 11/21/02 BY BDT  
REVISED 10/18/02 BY AEG  
REVISED 2/18/02 BY AEG  
REVISED 09/11/03 BY BDT LOTS 5-7B

**EAGLES LANDING AT NORTH OLIVER 2ND  
GRADING PLAN**  
WICHITA, KANSAS, SEDGWICK COUNTY, KANSAS

**BAUGHMAN COMPANY P.A.**  
ENGINEERING, SURVEYING, & PLANNING  
316-282-7271 • 315 ELLIS • WICHITA, KANSAS 67211

PROJECT NUMBER: \_\_\_\_\_ SHEET: **1**  
OF: **3**

DESIGN: \_\_\_\_\_ DRAWN: JAK APPROVED: \_\_\_\_\_ DATE: 1/4/01 SCALE: 1" = 60'

KOCH INDUSTRIES, INC  
4520 E. 37TH ST. N.  
WICHITA, KS 67220

ACCH INDUSTRIES, INC.  
4433 N. OLIVER  
WICHITA, KS 67220



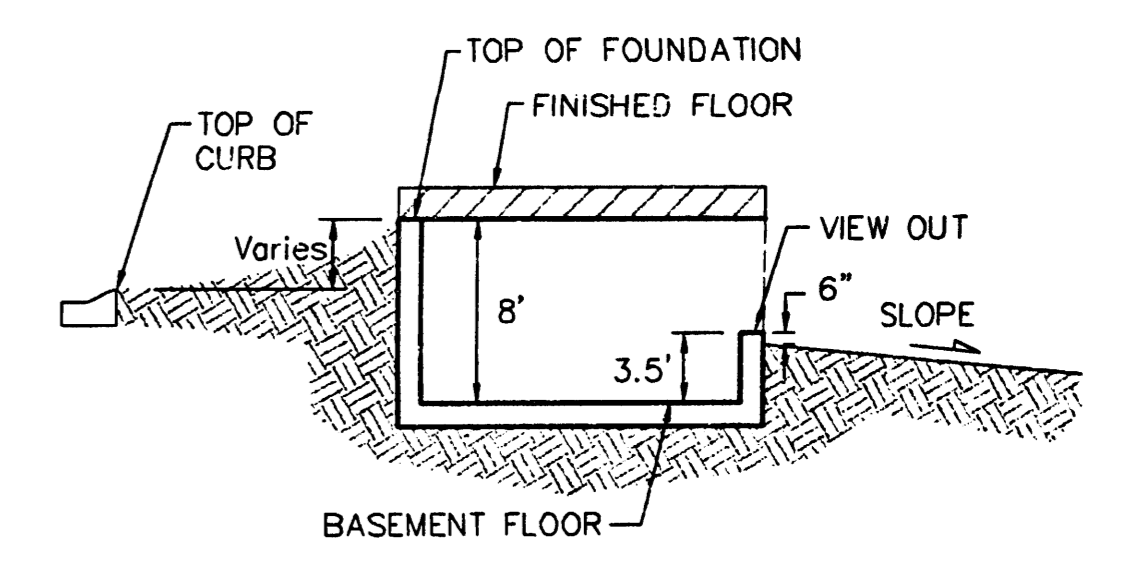
**POND DATA:**  
STAINING POND ELEVATION: 198.0  
WILLOW ELEVATION: 195.0  
100 YEAR DESIGN WILLOW SURFACE: 198.8 City Datum

KNIGHT, HOWARD & DORIS LIV TRUST  
4433 N. OLIVER  
WICHITA, KS 67220

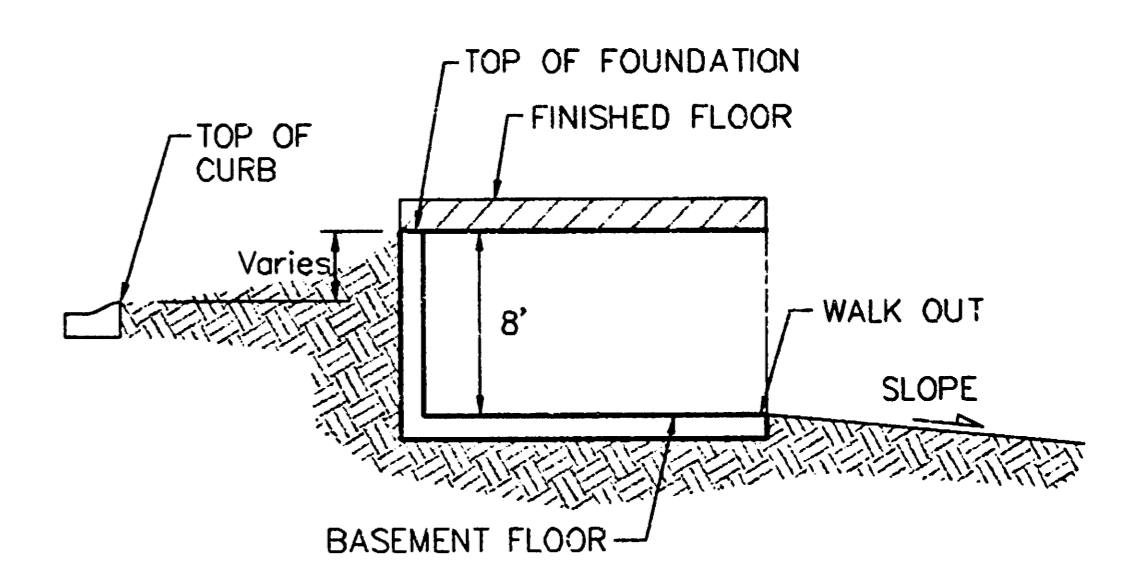
SCALE: 1" = 60'  
• = IRON

LOT	BLOCK	ELEVATION	
		CITY DATUM	NGVD
37-39, 41-44	A	205.0	1392.4
28-40, 43-46	C	201.0	1388.4
2	D	207.0	1394.4
3	D	206.0	1393.4
5	D	204.0	1391.4
6	D	203.0	1390.4
7	D	202.5	1389.9
8	D	201.5	1388.9
9	D	201.0	1388.4
10-11	D	200.5	1387.9
12	D	198.0	1385.4
13-17	D	196.5	1383.9
1	E	196.5	1383.9
2	E	200.5	1387.9
3	E	202.5	1389.9
4	E	206.0	1393.4

\* EXTRA DEEP FOUNDATION MAY BE REQUIRED



TYPICAL VIEW OUT  
NO SCALE



TYPICAL WALK OUT  
NO SCALE

REVISED 05/13/04 BY BLP (lots 31-33 Blk C)  
REVISED 10/9/02 BY AEG  
REVISED 2/16/02 BY AEG

**EAGLES LANDING AT NORTH OLIVER 2ND**  
**GRADING PLAN**  
WICHITA, KANSAS, SEDGWICK COUNTY, KANSAS

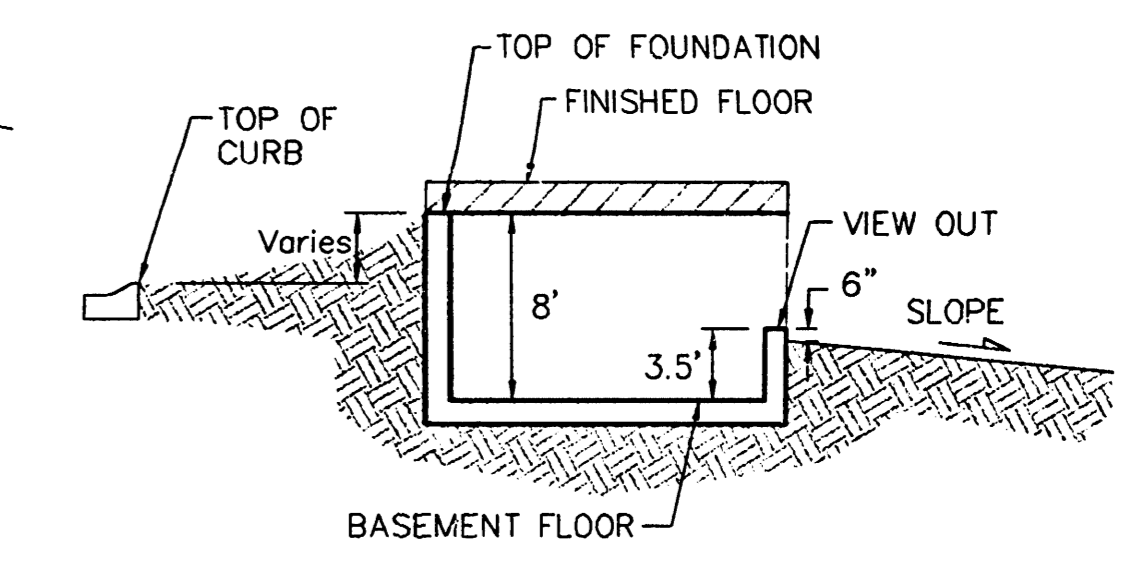
**BAUGHMAN COMPANY P.A.**  
ENGINEERING, SURVEYING, & PLANNING  
316-282-7221 • 315 ELLIS • WICHITA, KANSAS 67211

DESIGN	DRAWN	APPROVED	DATE	SCALE	SHEET
	JAK		1/4/01	1" = 60'	2 OF 3

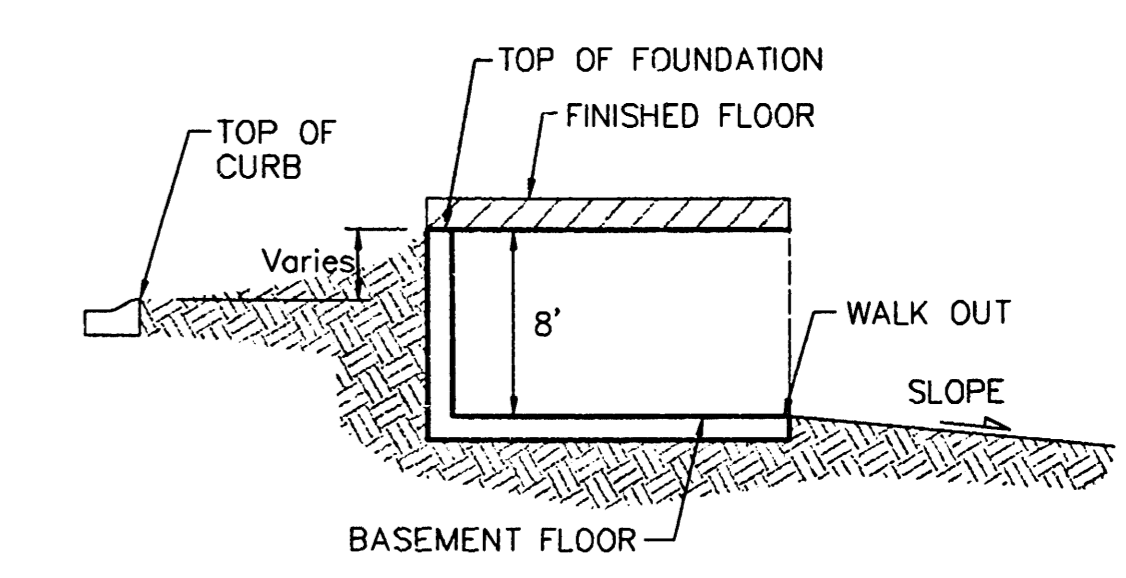
SCALE: 1" = 60'  
• = IRON

LOT	BLOCK	ELEVATION	
		CITY DATUM	NGVD
37-39, 41-44	A	205.0	1392.4
28-40, 43-46	C	201.0	1388.4
2	D	207.0	1394.4
3	D	206.0	1393.4
5	D	204.0	1391.4
6	D	203.0	1390.4
7	D	202.5	1389.9
8	D	201.5	1388.9
9	D	201.0	1388.4
10-11	D	200.5	1387.9
12	D	198.0	1385.4
13-17	D	196.5	1383.9
1	E	196.5	1383.9
2	E	200.5	1387.9
3	E	202.5	1389.9
4	E	206.0	1393.4

**POND DATA:**  
 STATIC POOL ELEVATION: 198.5 City Datum  
 BOTTOM ELEVATION: 198.0 City Datum  
 100 YEAR FLOOD WATER SURFACE: 194.5 City Datum



TYPICAL VIEW OUT  
NO SCALE



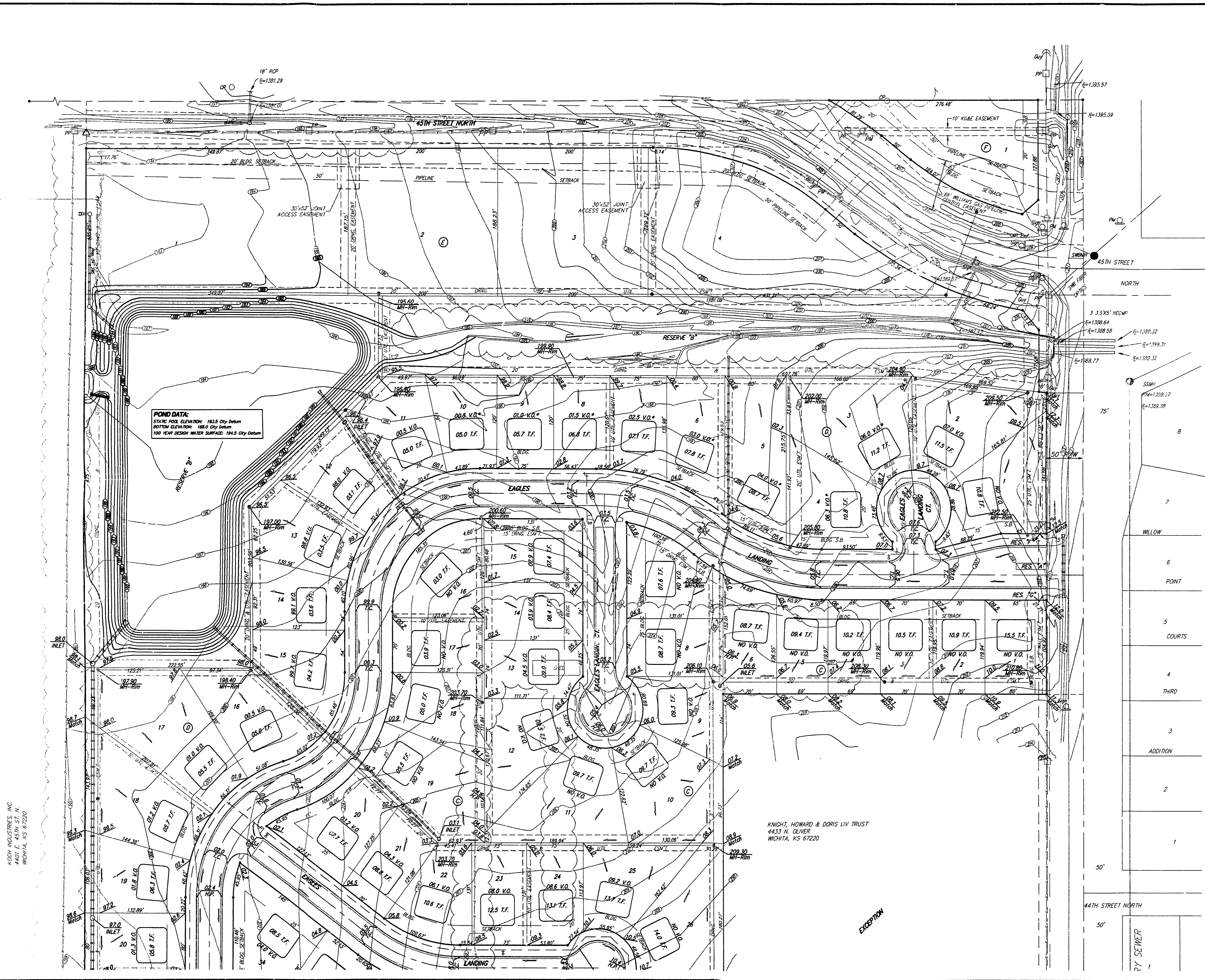
TYPICAL WALK OUT  
NO SCALE

REVISED 10/8/02 BY AEG  
 REVISED 2/16/02 BY AEG

**EAGLES LANDING AT NORTH OLIVER 2ND  
 GRADING PLAN**  
 WICHITA, KANSAS, SEDGWICK COUNTY, KANSAS

**BAUGHMAN COMPANY P.A.**  
 ENGINEERING, SURVEYING, & PLANNING  
 316-262-7271 • 315 ELLIS • WICHITA, KANSAS 67211

DESIGN	DRAWN	APPROVED	DATE	SCALE	SHEET
	JAK		1/4/01	1" = 60'	3



KOCH INDUSTRIES, INC.  
 4401 E. 45TH ST. N.  
 WICHITA, KS 67220

KNIGHT, HOWARD & DORIS LIV TRUST  
 4433 N. OLIVER  
 WICHITA, KS 67220

EXCEPTION

PY SEWER