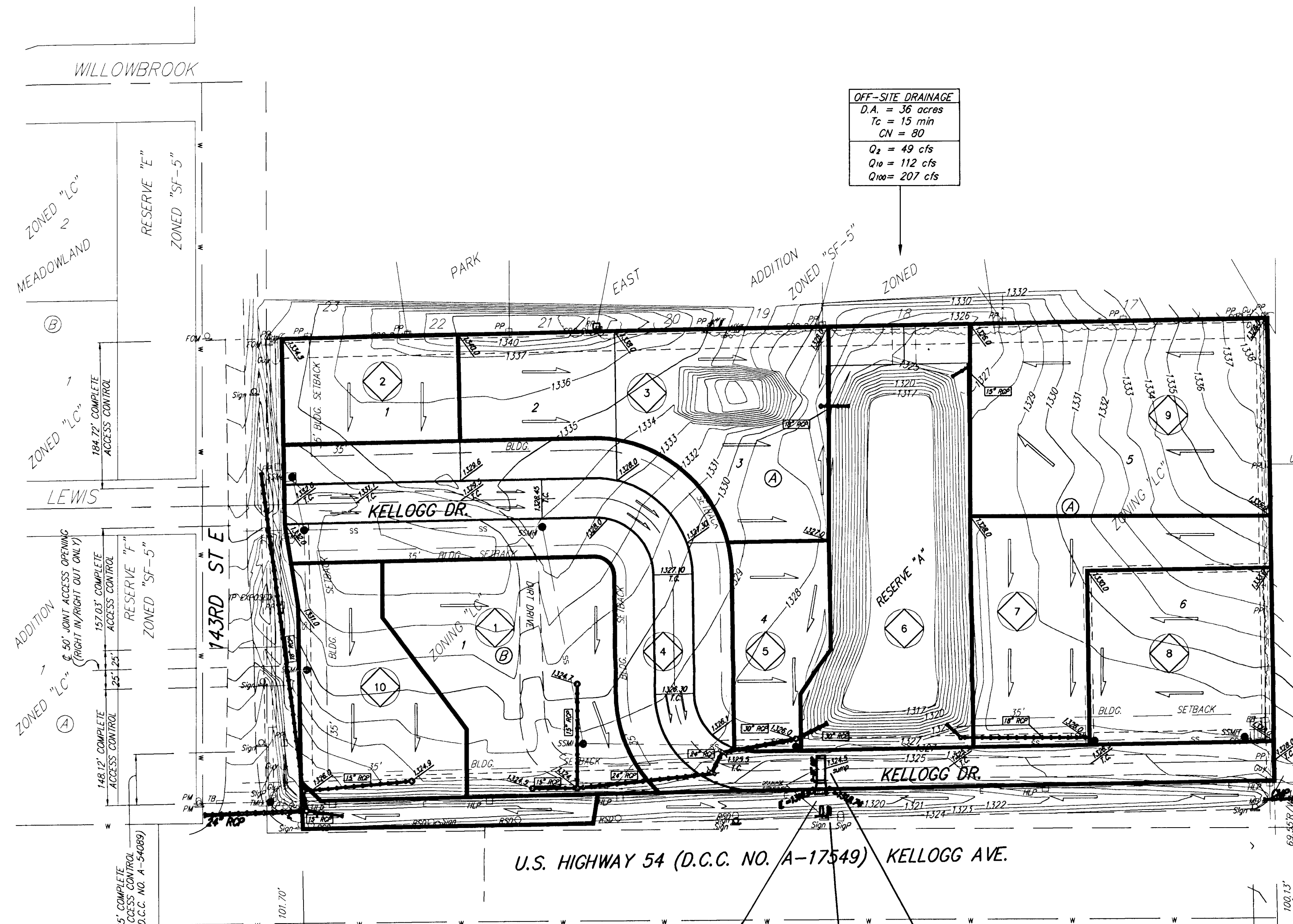
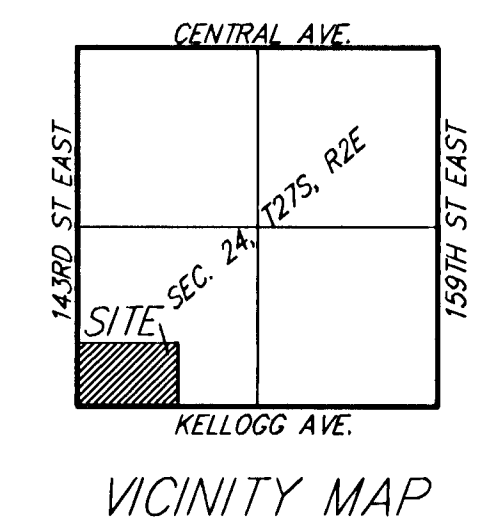
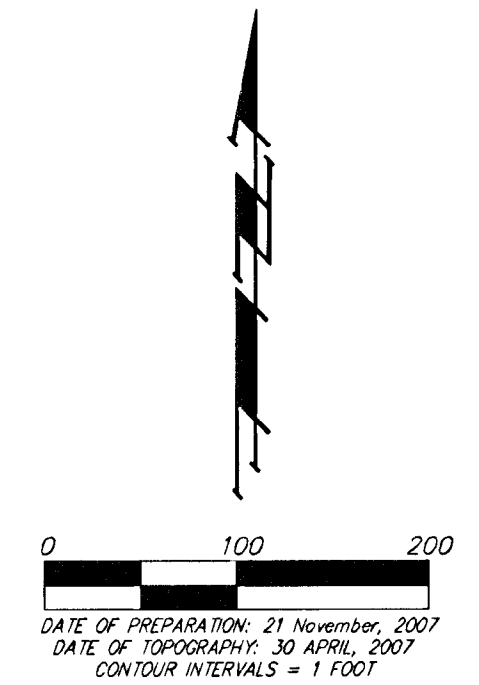


DRAINAGE & GRADING PLAN PRAIRIE POND PLAZA 2ND ADDITION WICHITA, SEDGWICK COUNTY, KANSAS



SHELTON, JACK L PAISY L
14802 E. KELLOGG
WICHITA, KS 67230-9253
ZONED "SF-20"



MINIMUM BUILDING PAD ELEVATIONS FOR LOWEST OPENING TO THE STRUCTURES

LOTS	BLOCK	ELEVATION
3.4.5	A	1328.40

BENCHMARK:
 "1" CUT ON TRAFFIC SIGNAL LIGHT POLE BASE, NW CORNER OF KELLOGG & 143RD ST E, ELEV. = 1318.61 NGVD29 (131.21 CITY DATUM).
 "2" CUT, TOP OF WEIR AT W END OF HEADWALL, 730'± E. OF 143RD ST. E. & 112'± N. OF THE S. LINE OF THE SW 1/4 OF SEC. 24, T1P. 27-S, R-2-E, ELEV. = 1326.74 NGVD29 (139.34 CITY DATUM).

- PP □ = Power Pole
- EB □ = Electric Box
- GA □ = Guy Anchor
- HLP □ = High Line Pole
- LPO □ = Light Pole
- SBC Pad □ = SBC Pedestal
- FM □ = Fencing Marker
- COM □ = Cor. Fiberglass Marker
- SPG □ = Signal Pole
- Sign □ = Sign
- RSD □ = Road Side Delineator
- TB □ = Traffic Box
- TMH ● = Traffic Manhole
- WV ● = Weir Valve
- MB ● = Mail Box

NOTE: No FEMA SFHA exists on this property as of May 10, 2007.

SWS shown are to serve their respective lots to convey drainage to the detention area. Lots are expected to have internal SWS to connect to the as-shown inlets. Internal SWS will be per Site Plans and are not proposed/shown here.

Developed Intensity	2yr	10yr	100yr
Rational C	3.83	5.22	7.37
	0.49	0.56	0.7

Basin ID	Area	Developed Flowrates		
		2yr	10-yr	100-yr
	acres	cfs	cfs	cfs
1	1.7	3.3	5.1	9
2	1.5	2.8	4.4	7.7
3	2.0	3.8	5.8	10.3
4	2.8	5.3	8.2	14
5	0.7	1.3	2.0	3.6
6	2.3	4.3	6.7	11.9
7	1.4	2.6	4.1	7.2
8	1.2	2.3	3.5	6.2
9	2.2	4.1	6.4	11.3
10	1.1	2.1	3.3	5.9
TOTAL	17.0	32	50	88

EXISTING CONDITIONS
 D.A. = 52 acres
 Tc = 15 min
 CN = 80
 Q2 = 71 cfs
 Q10 = 162 cfs
 Q100 = 299 cfs

EXISTING POND (Static WS = 1320.0)

STAGE	INFLOW	OUTFLOW	ELEVATION
2 yr	71 cfs	2.0 cfs	1320.4
10 yr	160 cfs	34 cfs	1321.8
100 yr	298 cfs	108 cfs	1324.0

PROPOSED POND

ELEVATION	AREA (acres)
1317	35.600
1318	42.000
1319	48.000
1320	50.000
1321	55.000
1322	59.000
1323	63.500
1324	68.000
1325	73.000

DRAINAGE & GRADING PLAN PRAIRIE POND PLAZA 2ND ADDITION

10 MAY 2007

B Baughman Company, P.A.
 315 Ellis St. Wichita, KS 67211 P 316-262-7171 F 316-262-0149
 ENGINEERING | SURVEYING | PLANNING | LANDSCAPE ARCHITECTURE