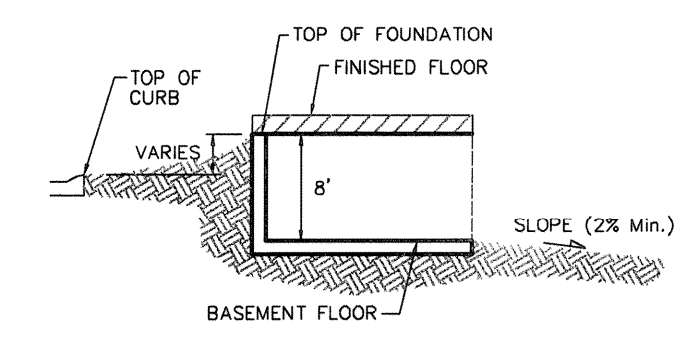
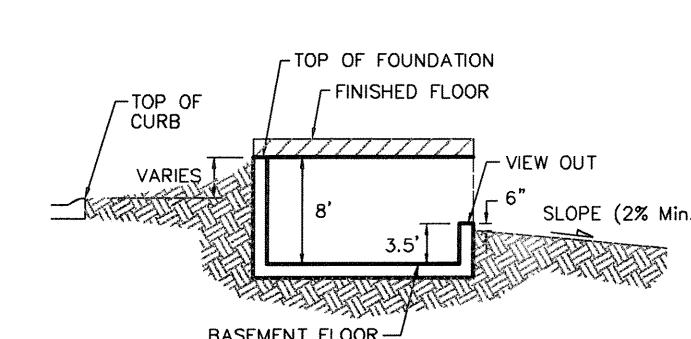
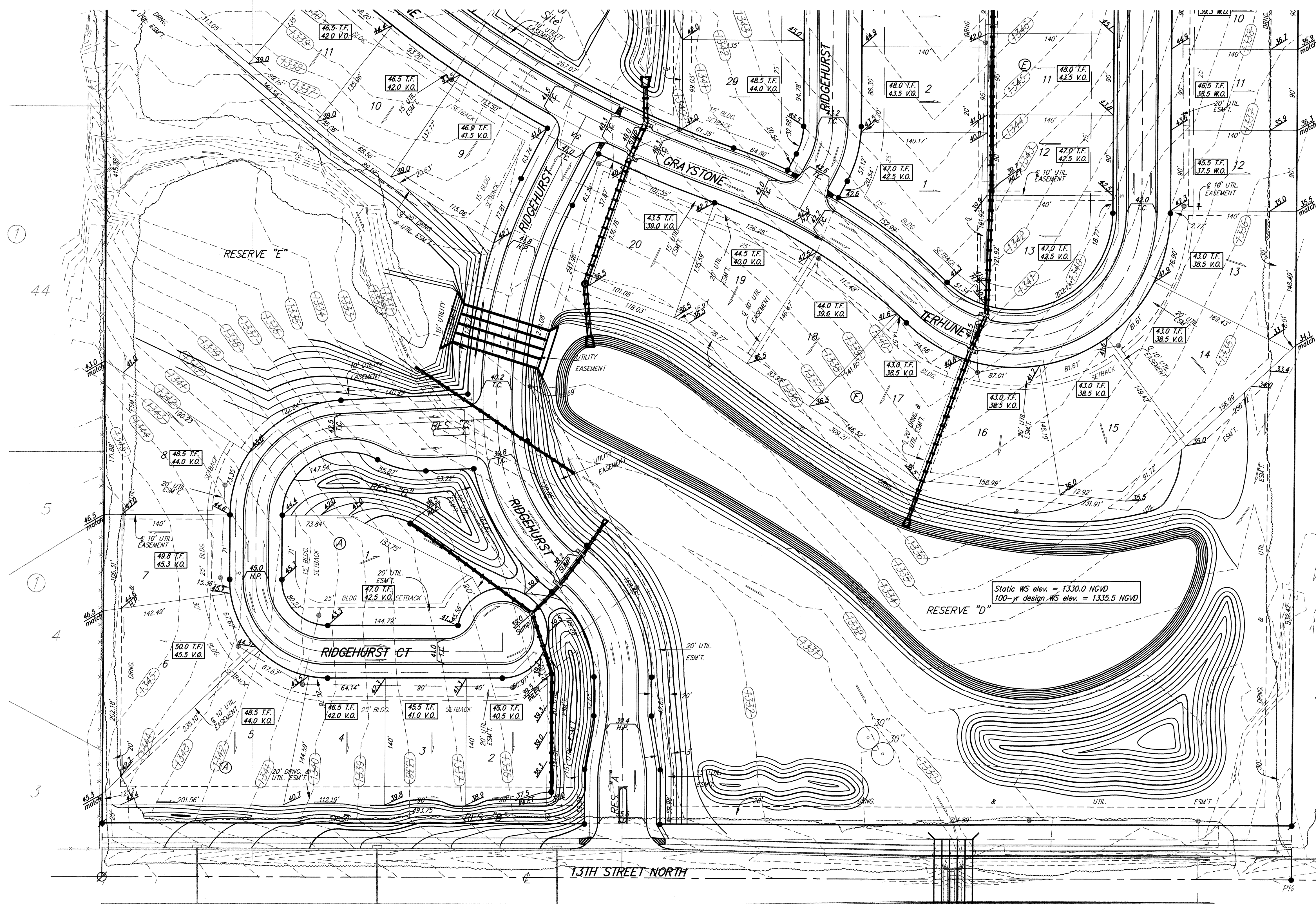


BENCHMARK:
 BM #1: "I" CUT, TOP OF CURB, S. SIDE OF
 SUNDANCE AS DEDICATED IN SAVANNA AT CASTLE
 ROCK RANCH 7TH ADDITION, 25 1/2 W. OF THE WEST
 LINE OF THE SE 1/4 OF SEC. 12, TWP. 27-S,
 R-2-E.
 ELEV. = 1347.33 NGVD29

BM #2: 60d NAIL IN HIGH LINE POLE, 30' SOUTH OF
 S1/4 COR., SEC. 12, TWP. 27-S, R-2-E.
 ELEV. = 1348.58 NGVD29 (PER COUNTY RECORD)



- NOTES:**
1. PROPOSED TOP OF FOUNDATION ELEVATIONS ARE SHOWN ON PLANS. CONTRACTOR TO SET FINISHED FLOOR AND GARAGE FLOOR ELEVATIONS. ALL STREET ELEVATIONS SHOWN ON PLANS ARE FOR TOP OF CURB (FULL-HEIGHT).
 2. THIS GRADING PLAN IS DESIGNED WITH VIEW-OUTS AND WALK-OUTS. ELEVATIONS SHOWN AS XX.X V.O. DEPICT VIEW-OUT STRUCTURES. ELEVATIONS SHOWN AS XX.X W.O. DEPICT WALK-OUT STRUCTURES.
 3. ALL LOTS SHALL MEET MINIMUM PAD REQUIREMENT AS SHOWN ON THE RECORDED PLAT.

LOT	BLOCK	ELEVATION NGVD29
1-3	A	1,337.0
9-15	A	1,339.0
1-5, 30-34	D	1,342.0
6-21, 26-29	D	1,344.0
13-20	F	1,337.0

4. LOT DIMENSIONS HAVE BEEN OMITTED ON THIS PLAN. REFER TO THE RECORDED PLAT FOR FINAL DIMENSION, EASEMENT, & BUILDING SETBACK INFORMATION.
5. HOUSE PAD ELEVATIONS DEPICTED WITH BOLD OUTLINES AND NOTED WITH THIS SYMBOL (●) INDICATE THAT DEEP FOOTINGS OR DEEP FOUNDATIONS MAY BE REQUIRED.
6. A DRAINAGE PLAN HAS BEEN DEVELOPED FOR THIS SUBDIVISION AND IS ON FILE WITH SEDGWICK COUNTY, KANSAS. DRAINAGE INTENT SHALL REMAIN AS DEPICTED OR AS MODIFIED WITH THE APPROVAL OF THE COUNTY ENGINEER OF SEDGWICK COUNTY, KANSAS. NO OBSTRUCTIONS WHICH IMPEDE THE FLOW OF THIS DRAINAGE PLAN SHALL BE ALLOWED.
7. ALL ELEVATIONS SHOWN ARE NGVD29 DATUM.

---(1340)--- Existing Grade

STONEBRIDGE 2ND ADDITION
SUBDIVISION GRADING PLAN
 SEDGWICK COUNTY, KANSAS

Baughman Company, P.A., 315 Ellis St., Wichita, KS 67211 | P: 316-262-7271 | F: 316-262-0149
 ENGINEERING | SURVEYING | PLANNING | LANDSCAPE ARCHITECTURE

PROJECT NUMBER	DESIGN
8-6-08	ATD
APPROVED	TMS
DATE	07/08
REVISIONS:	NBW
8-6-08	Modified back to elev. for 13 E, 13 F, and 2 A.
SCALE	Noted
SHEET	1 OF 3

F:\GRADE\STONEBRIDGE2ND\GRADE.dwg 06-11-E017

