

REFLECTION RIDGE 7TH AND 8TH ADDITIONS TO WICHITA, SEDGWICK COUNTY, KANSAS

SCALE: 1"=100'

B.M. CHISELED 7" N.E. CORNER 3-7-13' RCB
BRIDGE ON RIDGE ROAD 175 FEET NORTH
OF S.E. CORNER N.E. 1/4, T27S, R1W
ELEV. 1325.84' M.S.L.
ELEV. 1328.46' CITY DATUM

S.W. CORNER N.E. 1/4
SEC. 4, T27S, R1W
OF THE 6TH P.M.

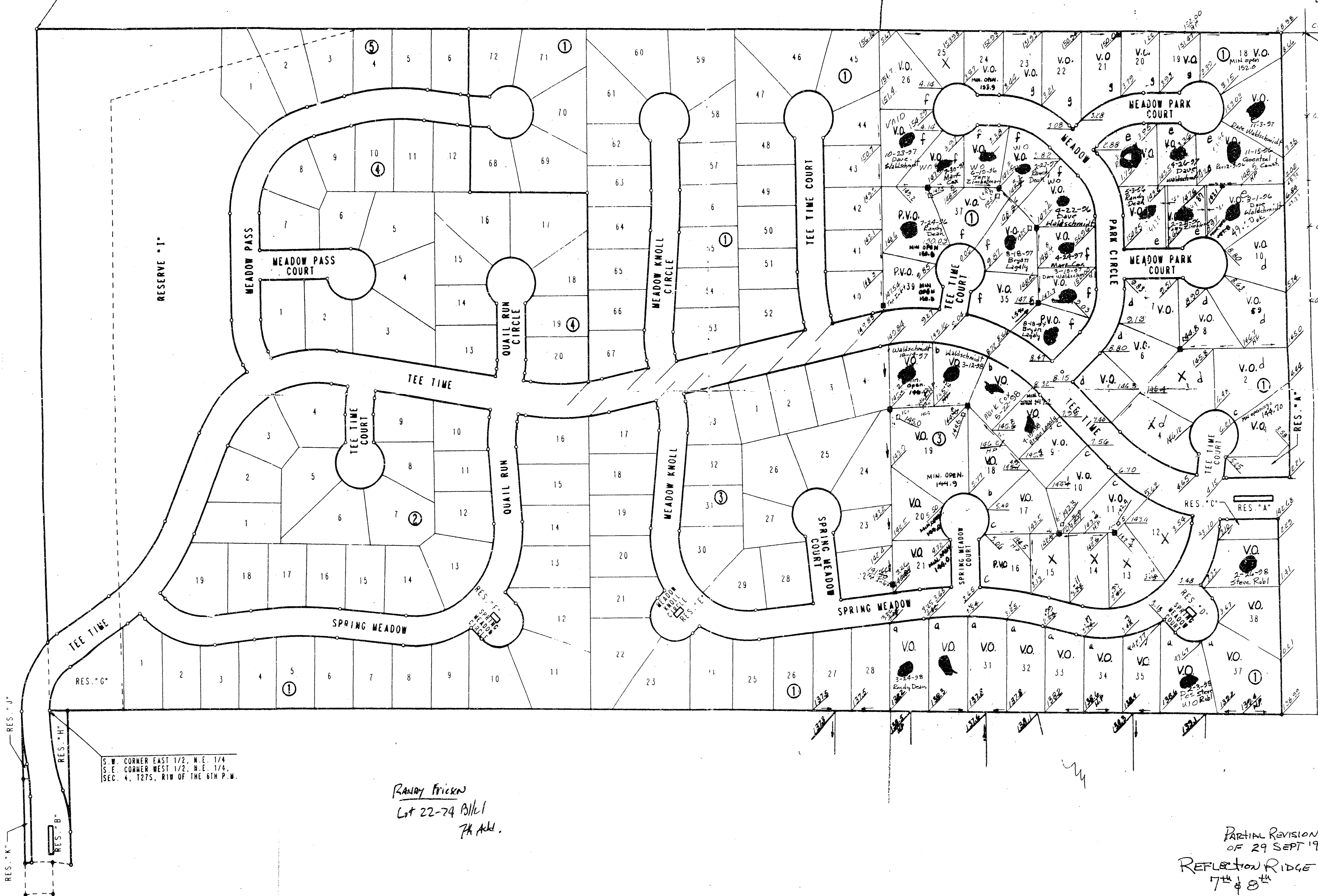
N.W. CORNER N.E. 1/4
SEC. 4, T27S, R1W
OF THE 6TH P.M.

LEGEND

- H.P. HIGH POINT
- # MATCH EXISTING
- TOP OF CURB ELEVATION
- VO VIEW OUT BASEMENT LOT
- P.V.O. POSSIBLE VIEW OUT BASEMENT
- X NO VIEW OUT BASEMENT LOT

- a MIN. VIEW OUT OPENING 2 140.9
- b MIN. VIEW OUT OPENING 2 146.9
- c MIN. VIEW OUT OPENING 2 146.5
- d MIN. VIEW OUT OPENING 2 147.7
- e MIN. VIEW OUT OPENING 2 149.5
- f MIN. VIEW OUT OPENING 2 149.7
- g MIN. VIEW OUT OPENING 2 152.0

Lot 5 thru 12, 31 & 32 keep T.F. E. above
curb but lower wall for VO to 30"
if possible. Also 1/2" side slope to 411.



S.W. CORNER EAST 1/2, N.E. 1/4
S.E. CORNER WEST 1/2, N.E. 1/4
SEC. 4, T27S, R1W OF THE 6TH P.M.

Randy Frick
Lot 22-24 Blk 1
7th Add.

**APPROVED
DRAINAGE PLAN**

PARTIAL REVISION
OF 29 SEPT 198
REFLECTION RIDGE
7th & 8th
ADDN'S
2/35
RE: 10 9/30/97 PDM
V.H. 9/29/98
DETAILED DRAINAGE PLAN