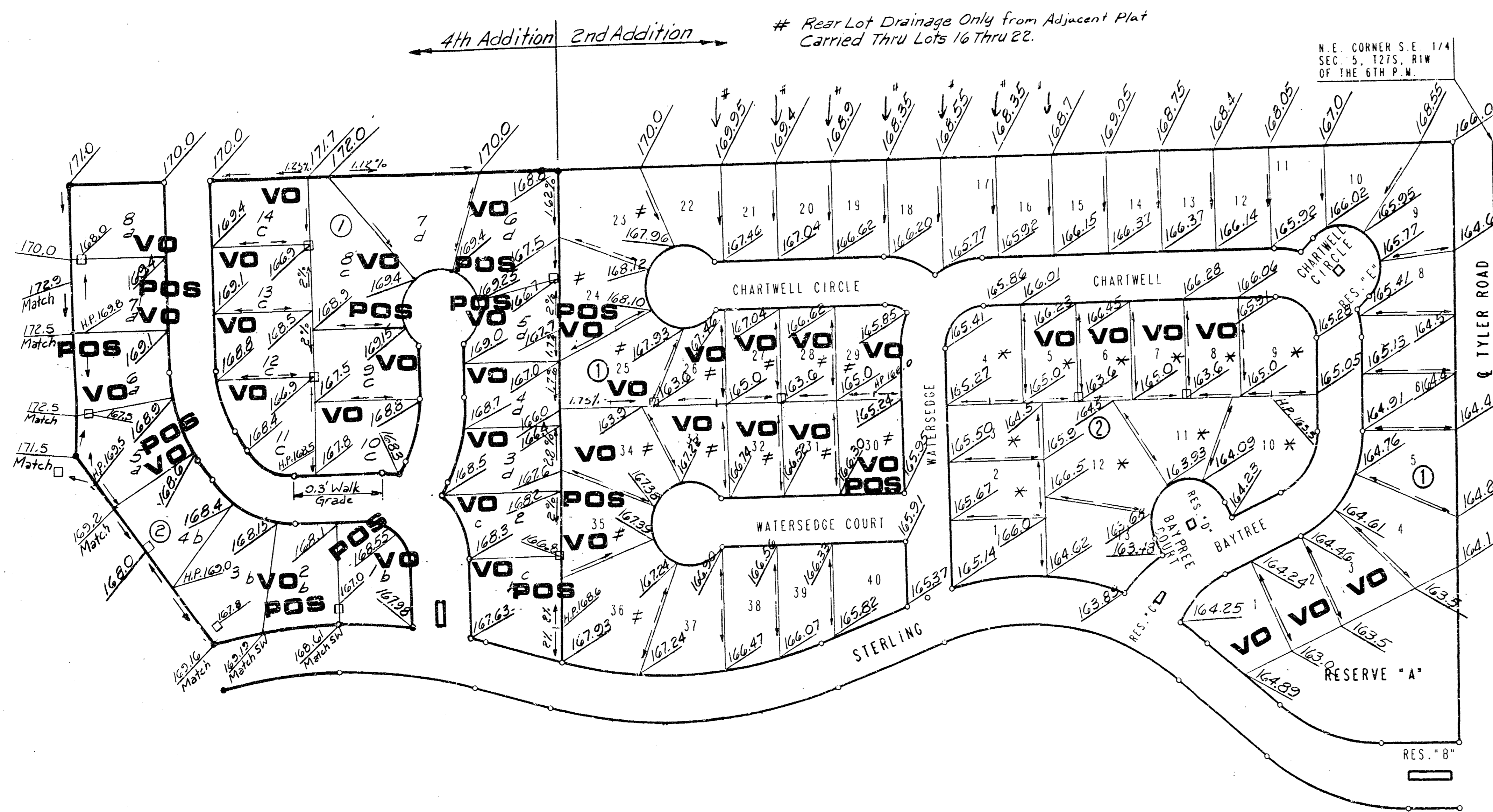


STERLING FARMS 2ND & 4th ADDITIONS TO WICHITA, SEDGWICK COUNTY, KANSAS



Note: Sterling Farms 4th Addition Rear Yard Drainage to be Carried via a Private Storm Water Sewer System to be Maintained by the Homeowner's Association.

SCALE: 1"=100'
○ = IRON SET

B.M. - STANDARD CITY B.M. DISC 30 FT. WEST AND 90 FT. SOUTH OF CENTERLINE INTERSECTION OF 21ST STREET NORTH AND TYLER ROAD. ELEV. = 169.95 CITY DATUM

ALL BUILDING SETBACK LINES ARE 20' UNLESS NOTED OTHERWISE.

FOR ADDITIONAL SETBACKS SEE C.U.P. DP-178.

MINIMUM PAD ELEVATION (LOWEST OPENING) FOR LOTS 1 THROUGH 4, BLOCK 1, SHALL BE ELEVATION 1352.0 M.S.L. OR ELEVATION 174.8 CITY DATUM.

Minimum Pad Elev. (Lowest Opening) (2nd Add.)
- 167.0
* - 166.5

VO - Viewout
POS VO - Possibly Viewout

Minimum Pad Elev. (Lowest Opening) (4th Add.)
a - 170.0 or Higher
b - Above Top of Sidewalk along Sterling
c - 163.0 or Higher
d - 167.0

STERLING FARMS
2ND & 4TH

**APPROVED
DRAINAGE PLAN**

Revised 8/18/94
Revised 10/22/93

DETAILED DRAINAGE PLAN