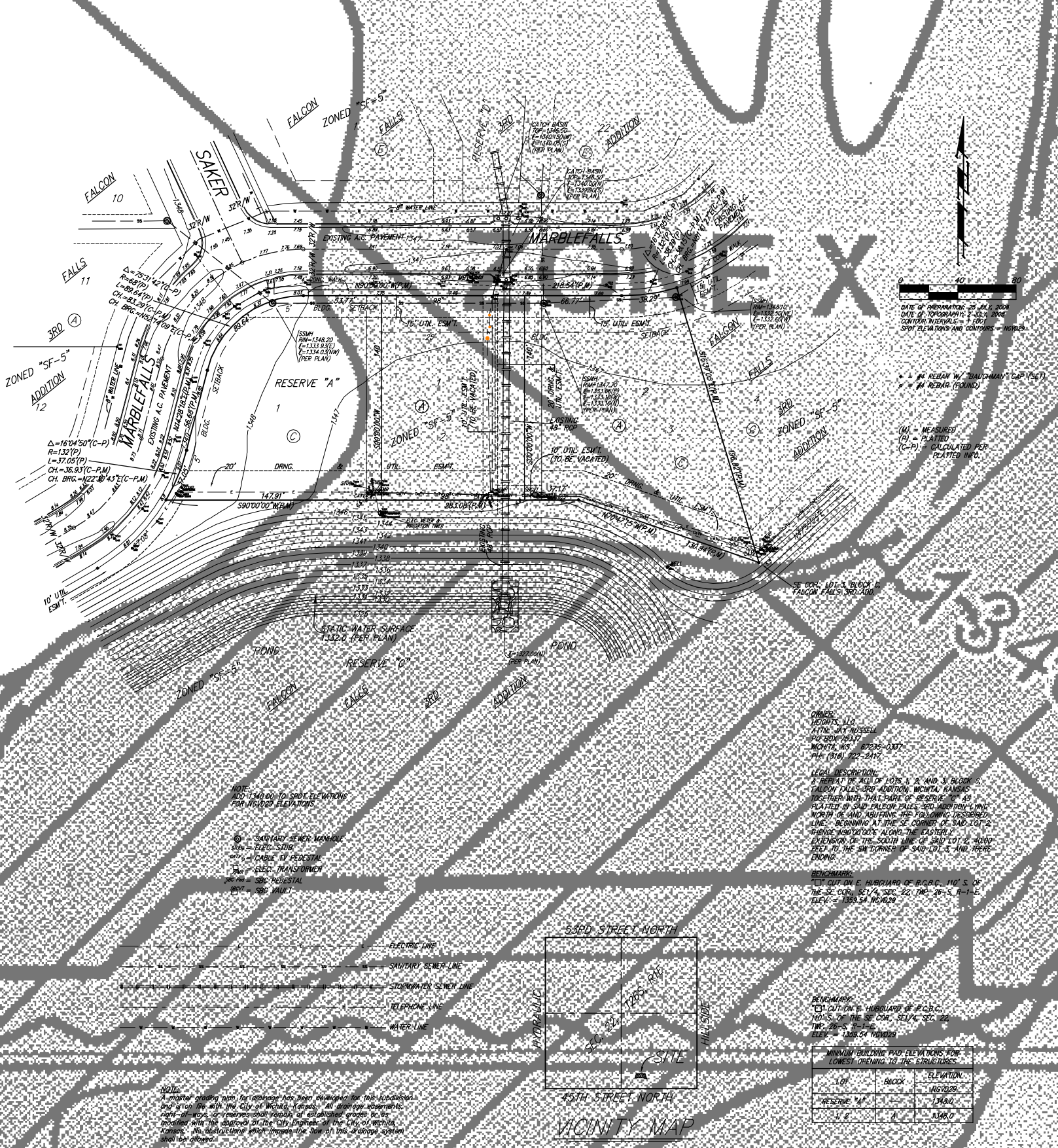


ONE-STEP FINAL PLAT
FALCON FALLS 4TH ADDITION
 WICHITA, SEDGWICK COUNTY, KANSAS



State of Kansas) SS We, Baughman Company, P.A., Surveyors in
 Sedgwick County) Sedgwick County, Kansas do hereby certify that we have surveyed and
 plotted "FALCON FALLS 4TH ADDITION", Wichita, Sedgwick County, Kansas
 and that the accompanying plat is a true and correct exhibit of the
 property surveyed, described as and being a replat of all of Lots 1, 2,
 and 3, Block 6, Falcon Falls 3rd Addition, Wichita, Sedgwick County,
 Kansas, together with that part of Reserve "C" as platted in said Falcon
 Falls 3rd Addition lying north of and abutting the following described line:
 Beginning at the SE corner of said Lot 2, thence N90°00'00"E along the
 easterly extension of the south line of said Lot 2, 40.00 feet to the SW
 corner of said Lot 3, and thence ending.
 Existing public easements and dedications
 being vacated by virtue of K.S.A. 12-512(b).
 All being situated in the SE 1/4 of Sec. 22, Twp. 26-S,
 R-1-E of the 6th P.M., Sedgwick County, Kansas.
 Baughman Company, P.A.

This plat of "FALCON FALLS 4TH ADDITION",
 Wichita, Sedgwick County, Kansas, has been submitted to and approved by
 the Wichita-Sedgwick County Metropolitan Area Planning Commission,
 Wichita, Kansas
 Dated this _____ day of _____, 2008.
 Wichita-Sedgwick County Metropolitan Area Planning Commission

Chair
 M. S. Mitchell
 Secretary
 John L. Schlegel

Michael S. Conroy
 Surveyor

This plat approved and all dedications
 shown herein accepted by the City Council of the City of Wichita,
 Kansas, this _____ day of _____, 2008.

Mayor
 Carl Brewer
 City Clerk
 Karen Subert

Know all men by these presents that we,
 the undersigned, have caused the land in the surveyors certificate to be
 platted into Lots, a Block, and a Reserve to be known as "FALCON FALLS
 4TH ADDITION", Wichita, Sedgwick County, Kansas. The utility easement is
 hereby granted as indicated for the construction and maintenance of all
 public utilities. The drainage and utility easements are hereby granted as
 indicated for drainage purposes and for the construction and maintenance
 of all public utilities. The drainage easement is hereby granted as
 indicated for drainage purposes. Reserve "A" is hereby reserved for
 landscaping, home open space, drainage purposes, utilities as confined to
 easement, parking, and a swimming pool and related facilities. Reserve
 "A" shall be owned and maintained by the homeowners association for the
 addition. The Minimum Building Pad Elevations for the lowest opening to
 the structures shall be as indicated on the face of the plat.

Reviewed in accordance with K.S.A. 58-2005
 on this _____ day of _____, 2008.

Deputy County Surveyor
 Tricia L. Robello, L.S. #1246
 Sedgwick County, Kansas

State of Kansas) SS The foregoing instrument acknowledged before
 me, this _____ day of _____, 2008, by Jay W. Russell, Member
 of Heights, LLC, on behalf of the limited liability company.

Notary Public

Entered on transfer record this _____ day
 of _____, 2008.

County Clerk
 Don Brace

State of Kansas) SS The foregoing instrument acknowledged before
 me, this _____ day of _____, 2008, by Jay W. Russell, President
 of Falcon Falls Homeowners Association, on behalf of the association.

Notary Public

State of Kansas) SS This is to certify that this plat has been
 filed for record in the office of the Register of Deeds, this _____ day
 of _____, 2008, at _____ o'clock _____ M., and is duly recorded.

Register of Deeds
 Bill Meek

We, the undersigned, holders of a mortgage on the
 above described property, do hereby consent to this plat of "FALCON
 FALLS 4TH ADDITION", Wichita, Sedgwick County, Kansas.
 Chisholm Trail State Bank

Notary Public

State of Kansas) SS The foregoing instrument acknowledged be-
 fore me, this _____ day of _____, 2008, by _____
 at Chisholm Trail State Bank, on behalf of the bank.

Notary Public

Deputy
 Tonya Buckingham