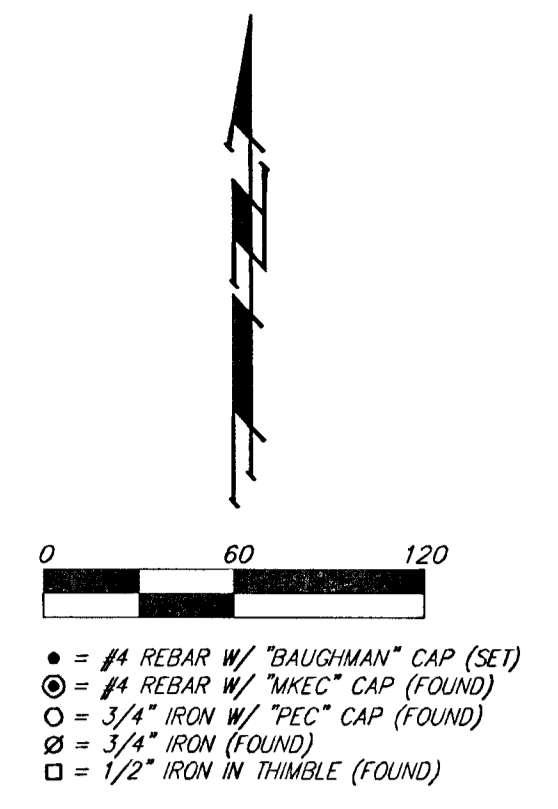
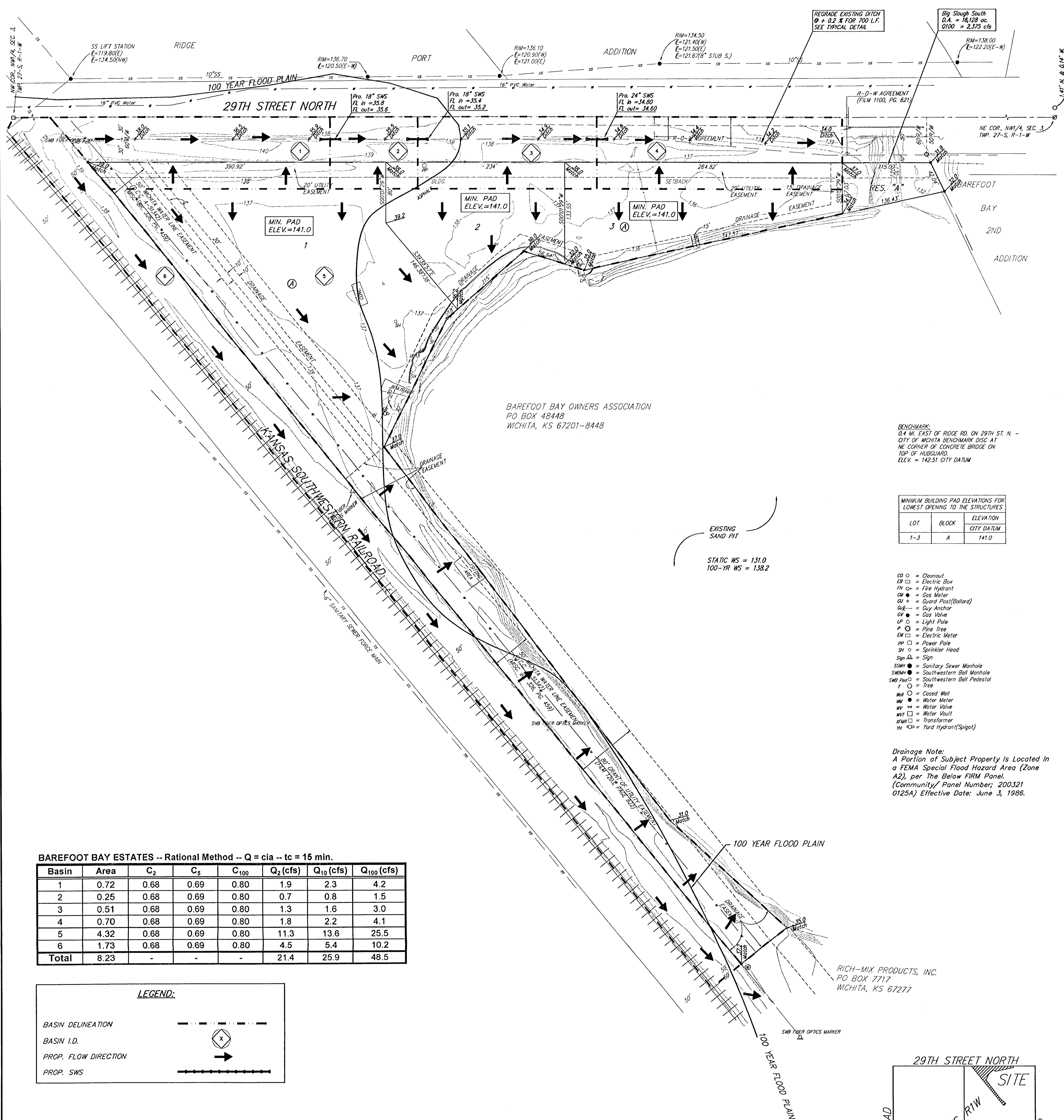


DRAINAGE & GRADING PLAN BAREFOOT BAY ESTATES WICHITA, SEDGWICK COUNTY, KANSAS



- = #4 REBAR W/ "BAUGHMAN" CAP (SE)
- = #4 REBAR W/ "MESC" CAP (FOUND)
- = 3/4" IRON W/ "TEC" CAP (FOUND)
- = 3/4" IRON (FOUND)
- = 1/2" IRON W/ THIMBLE (FOUND)



BAREFOOT BAY OWNERS ASSOCIATION
PO BOX 48448
WICHITA, KS 67201-8448

BENCHMARK:
0.4 MI. WEST OF RIDGE RD. ON 29TH ST. N. -
CITY OF WICHITA BENCHMARK DISC AT
NE CORNER OF CONCRETE BRIDGE ON
TOP OF HURDLEWAY.
ELEV. = 142.51 CITY DATUM

LOT	BLOCK	ELEVATION CITY DATUM
1-3	A	141.0

- CO = Catchment
- EB = Electric Box
- EM = Fire Hydrant
- GM = Gas Meter
- GR = Guard Rail (Subway)
- GA = Gas Valve
- LP = Light Pole
- PT = Pole Top
- EM = Electric Meter
- PP = Power Pole
- SH = Sprinkler Head
- SP = Sign
- SMW = Sanitary Sewer Manhole
- SWM = Southwestern Bell Manhole
- SWP = Southwestern Bell Pedestal
- T = Tree
- CB = Closed Manhole
- WM = Water Meter
- WV = Water Valve
- WHT = Water Hydrant
- WPT = Transformer
- WH = Ward Hydrant (Spigot)

Drainage Note:
A Portion of Subject Property is Located in
a FEMA Special Flood Hazard Area (Zone
A2), per The Below FIRM Panel.
(Community/ Panel Number: 200321
0125A) Effective Date: June 3, 1986.

BAREFOOT BAY ESTATES -- Rational Method -- Q = CIA -- tc = 15 min.

Basin	Area	C ₂	C _s	C ₁₀₀	Q ₂ (cfs)	Q ₁₀ (cfs)	Q ₁₀₀ (cfs)
1	0.72	0.68	0.69	0.80	1.9	2.3	4.2
2	0.25	0.68	0.69	0.80	0.7	0.8	1.5
3	0.51	0.68	0.69	0.80	1.3	1.6	3.0
4	0.70	0.68	0.69	0.80	1.8	2.2	4.1
5	4.32	0.68	0.69	0.80	11.3	13.6	25.5
6	1.73	0.68	0.69	0.80	4.5	5.4	10.2
Total	8.23	-	-	-	21.4	25.9	48.5

