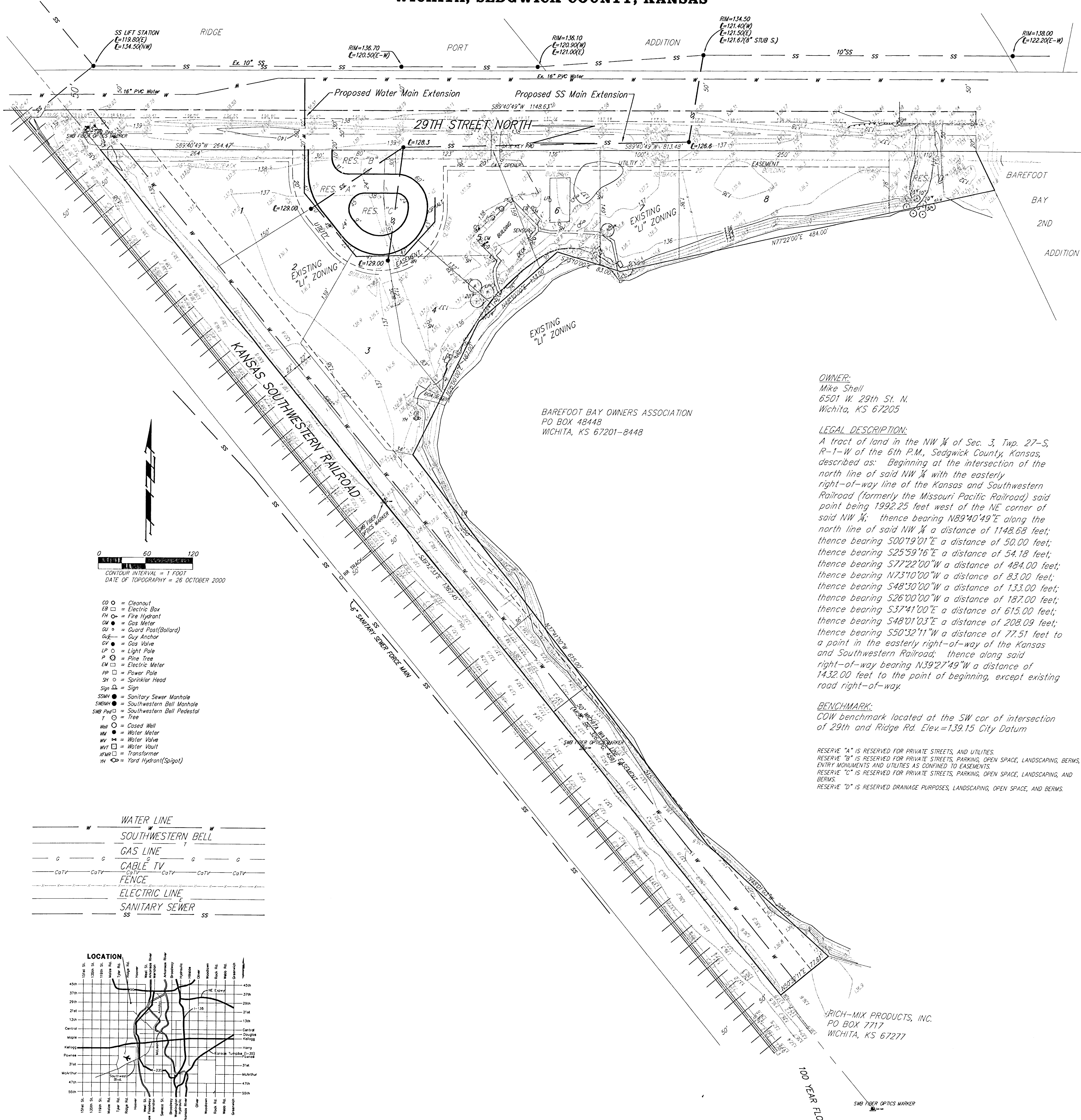


UTILITY PLAN
BAREFOOT BAY ESTATES
WICHITA, SEDGWICK COUNTY, KANSAS



OWNER:
 Mike Shell
 6501 W. 29th St. N.
 Wichita, KS 67205

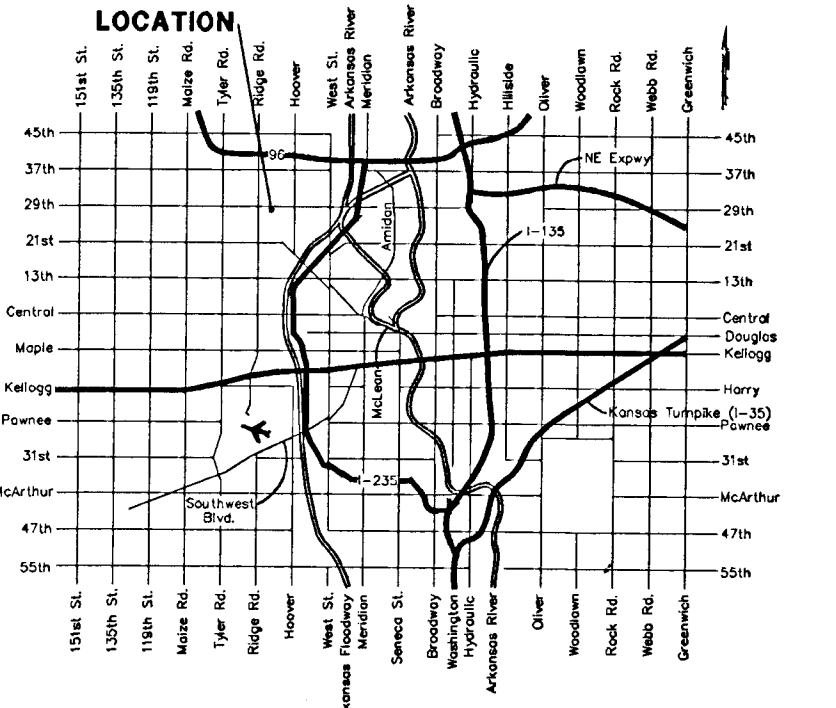
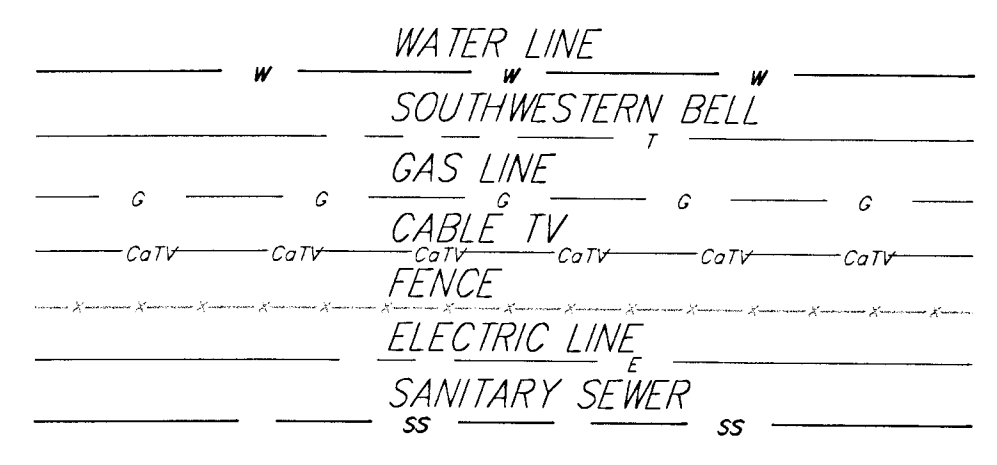
LEGAL DESCRIPTION:
 A tract of land in the NW 1/4 of Sec. 3, Twp. 27-S, R-1-W of the 6th P.M., Sedgwick County, Kansas, described as: Beginning at the intersection of the north line of said NW 1/4 with the easterly right-of-way line of the Kansas and Southwestern Railroad (formerly the Missouri Pacific Railroad) said point being 1992.25 feet west of the NE corner of said NW 1/4; thence bearing N89°40'49"E along the north line of said NW 1/4 a distance of 1148.68 feet; thence bearing S00°19'01"E a distance of 50.00 feet; thence bearing S25°59'16"E a distance of 54.18 feet; thence bearing S77°22'00"W a distance of 484.00 feet; thence bearing N73°10'00"W a distance of 83.00 feet; thence bearing S48°50'00"W a distance of 133.00 feet; thence bearing S26°00'00"W a distance of 187.00 feet; thence bearing S37°41'00"E a distance of 615.00 feet; thence bearing S48°01'03"E a distance of 208.09 feet; thence bearing S50°32'11"W a distance of 77.51 feet to a point in the easterly right-of-way of the Kansas and Southwestern Railroad; thence along said right-of-way bearing N39°27'49"W a distance of 1432.00 feet to the point of beginning, except existing road right-of-way.

BENCHMARK:
 COW benchmark located at the SW cor of intersection of 29th and Ridge Rd. Elev.=139.15 City Datum

RESERVE "A" IS RESERVED FOR PRIVATE STREETS, AND UTILITIES.
 RESERVE "B" IS RESERVED FOR PRIVATE STREETS, PARKING, OPEN SPACE, LANDSCAPING, BERMS, ENTRY MONUMENTS AND UTILITIES AS CONFINED TO EASEMENTS.
 RESERVE "C" IS RESERVED FOR PRIVATE STREETS, PARKING, OPEN SPACE, LANDSCAPING, AND BERMS.
 RESERVE "D" IS RESERVED DRAINAGE PURPOSES, LANDSCAPING, OPEN SPACE, AND BERMS.

0 60 120
 CONTOUR INTERVAL = 1 FOOT
 DATE OF TOPOGRAPHY = 26 OCTOBER 2000

- CO = Cleanout
- EB = Electric Box
- FH = Fire Hydrant
- GM = Gas Meter
- GP = Guard Post(Bulvard)
- GA = Guy Anchor
- GV = Gas Valve
- LP = Light Pole
- P = Pine Tree
- EM = Electric Meter
- PP = Power Pole
- SH = Sprinkler Head
- Sign = Sign
- SMW = Sanitary Sewer Manhole
- SWM = Southwestern Bell Manhole
- SWP = Southwestern Bell Pedestal
- T = Tree
- HW = Closed Well
- WM = Water Meter
- WV = Water Valve
- WVY = Water Vault
- TR = Transformer
- HY = Yard Hydrant(Spigot)



RICH-MIX PRODUCTS, INC.
 PO BOX 7717
 WICHITA, KS 67277

100 YEAR FLOOD PLAIN
 SHW PEBER OPTICS MARKER