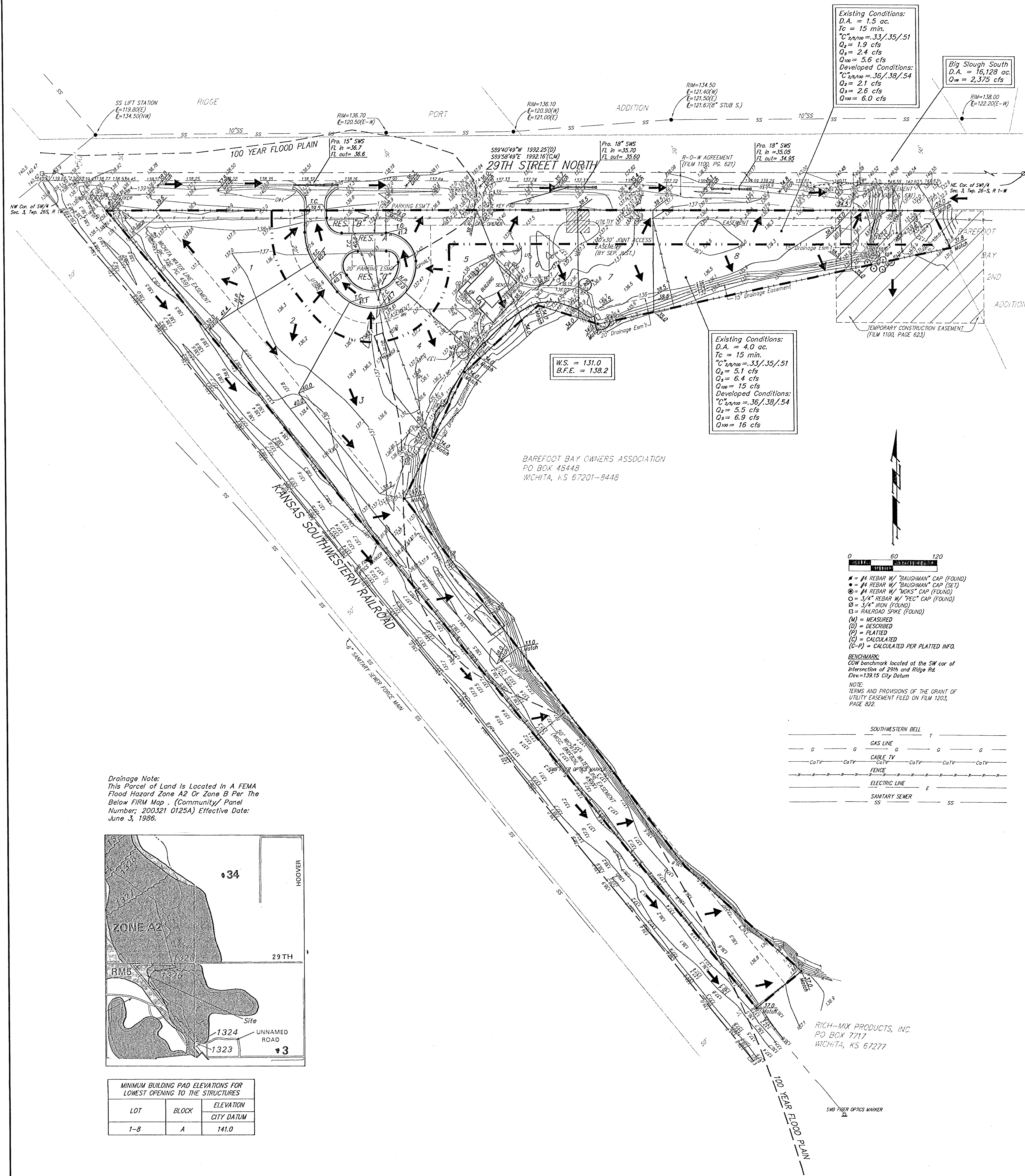


# DRAINAGE PLAN BAREFOOT BAY ESTATES WICHITA, SEDGWICK COUNTY, KANSAS



Existing Conditions:  
D.A. = 1.5 ac.  
Tc = 15 min.  
C<sub>1</sub> = .33, .35, .51  
Q<sub>1</sub> = 1.9 cfs  
Q<sub>2</sub> = 2.4 cfs  
Q<sub>3</sub> = 5.6 cfs  
Developed Conditions:  
C<sub>1</sub> = .36, .38, .54  
Q<sub>1</sub> = 2.1 cfs  
Q<sub>2</sub> = 2.8 cfs  
Q<sub>3</sub> = 6.0 cfs

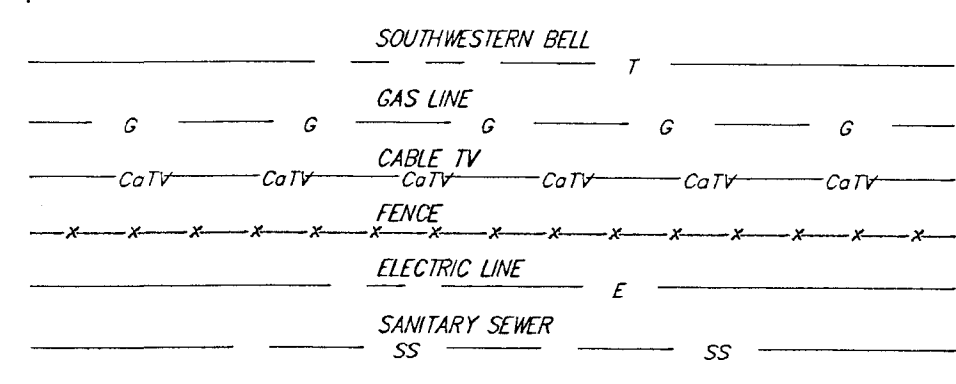
Big Slough South  
D.A. = 16,128 ac.  
Q<sub>3</sub> = 2,375 cfs

W.S. = 131.0  
B.F.E. = 136.2

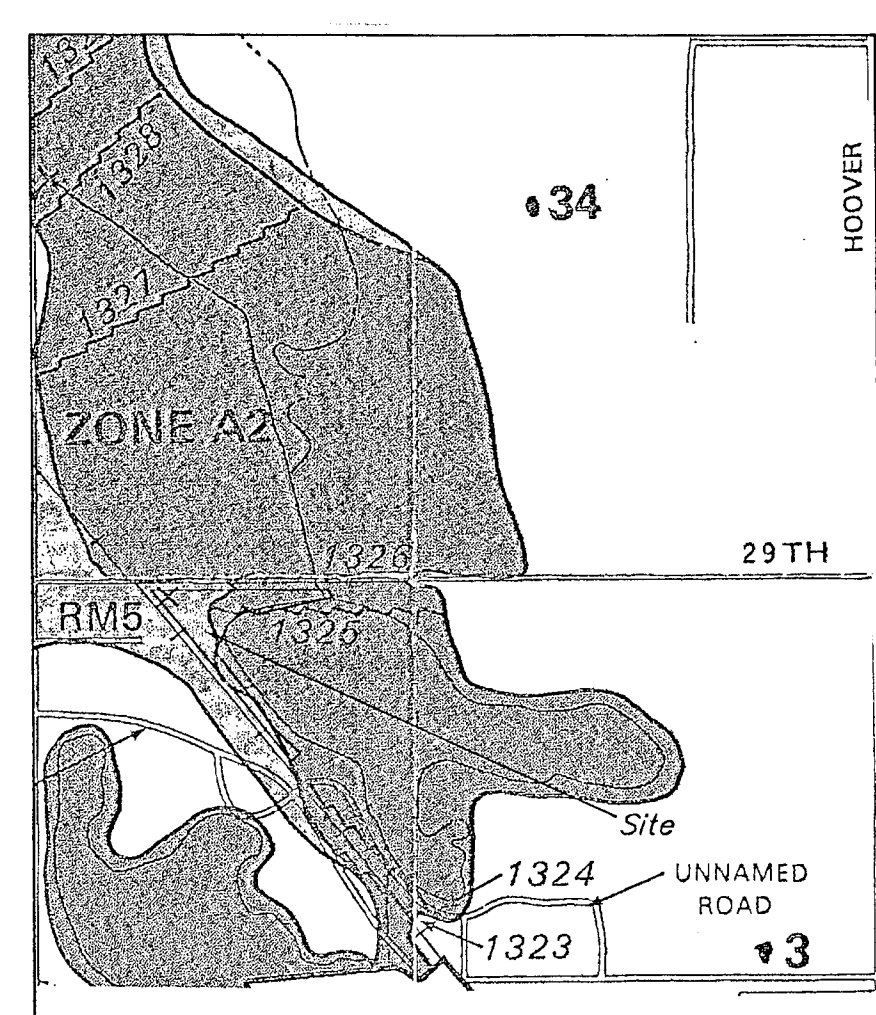
Existing Conditions:  
D.A. = 4.0 ac.  
Tc = 15 min.  
C<sub>1</sub> = .33, .35, .51  
Q<sub>1</sub> = 5.1 cfs  
Q<sub>2</sub> = 6.4 cfs  
Q<sub>3</sub> = 15 cfs  
Developed Conditions:  
C<sub>1</sub> = .36, .38, .54  
Q<sub>1</sub> = 5.5 cfs  
Q<sub>2</sub> = 6.9 cfs  
Q<sub>3</sub> = 16 cfs

0 60 120  
Feet

- = #4 REBAR W/ "BAUGHMAN" CAP (FOUND)
  - = #4 REBAR W/ "BAUGHMAN" CAP (SET)
  - = #4 REBAR W/ "MOSS" CAP (FOUND)
  - = 3/4" REBAR W/ "PEC" CAP (FOUND)
  - = 3/4" IRON (FOUND)
  - = RAILROAD SPIKE (FOUND)
  - (M) = MEASURED
  - (D) = DESCRIBED
  - (P) = PLATED
  - (C) = CALCULATED
  - (C-2) = CALCULATED PER PLATED INFO.
- BENCHMARK:  
COW benchmark located at the SW cor of intersection of 29th and Ridge Rd.  
Elev = 138.15 City Datum
- NOTE:  
STING AND PROVISIONS OF THE GRANT OF UTILITY EASEMENT FILED ON FILM 1203, PAGE 822.



Drainage Note:  
This Parcel of Land is Located in A FEMA Flood Hazard Zone A2 Or Zone B Per The Below FIRM Map - (Community/ Panel Number: 200321 0125A) Effective Date: June 3, 1986.



LOT	BLOCK	ELEVATION CITY DATUM
1-8	A	141.0

12 DECEMBER 2000