

DRAINAGE CONCEPT BAREFOOT BAY ESTATES WICHITA, SEDGWICK COUNTY, KANSAS

Existing Conditions:
D.A. = 1.5 ac.
Tc = 15 min.
C_u = 33/35/51
Q₁ = 1.9 cfs
Q₂ = 2.4 cfs
Q₃ = 5.6 cfs
Developed Conditions:
C_u = 36/38/54
Q₁ = 2.1 cfs
Q₂ = 2.6 cfs
Q₃ = 6.0 cfs

Existing Conditions:
D.A. = 4.0 ac.
Tc = 15 min.
C_u = 33/35/51
Q₁ = 5.1 cfs
Q₂ = 6.4 cfs
Q₃ = 15 cfs
Developed Conditions:
C_u = 36/38/54
Q₁ = 5.5 cfs
Q₂ = 6.9 cfs
Q₃ = 16 cfs

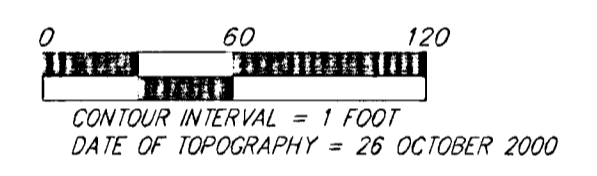
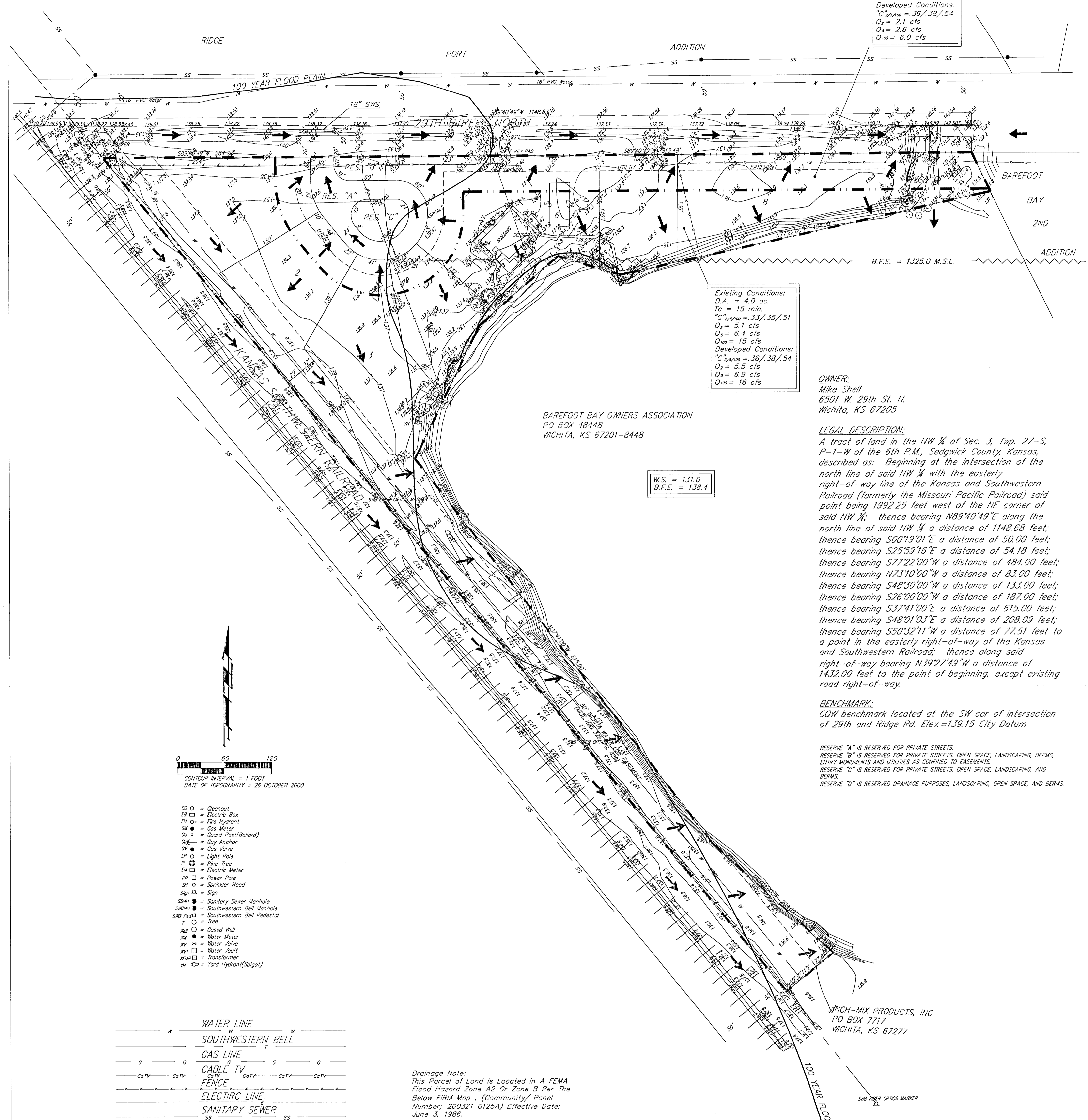
W.S. = 131.0
B.F.E. = 138.4

OWNER:
Mike Shell
6501 W. 29th St. N.
Wichita, KS 67205

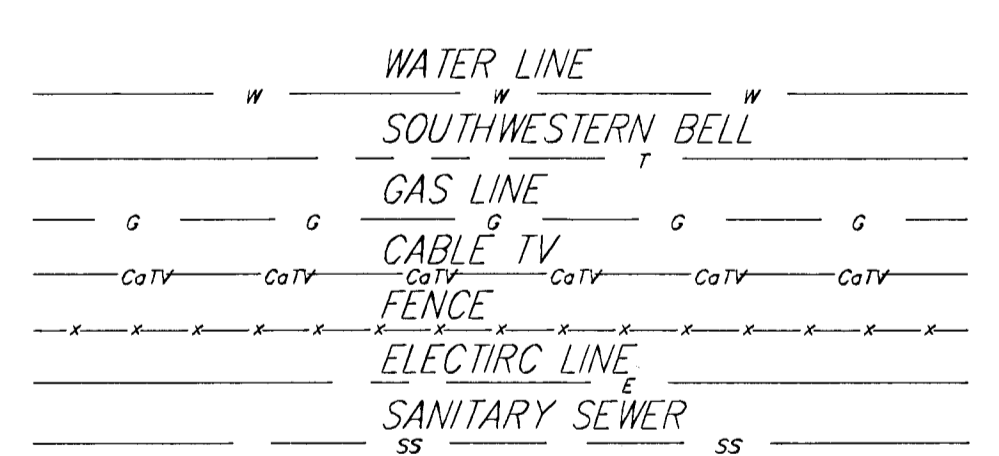
LEGAL DESCRIPTION:
A tract of land in the NW 1/4 of Sec. 3, Twp. 27-S, R-1-W of the 6th P.M., Sedgwick County, Kansas, described as: Beginning at the intersection of the north line of said NW 1/4 with the easterly right-of-way line of the Kansas and Southwestern Railroad (formerly the Missouri Pacific Railroad) said point being 1992.25 feet west of the NE corner of said NW 1/4; thence bearing N89°10'49"E along the north line of said NW 1/4 a distance of 1148.68 feet; thence bearing S00°19'01"E a distance of 50.00 feet; thence bearing S25°59'16"E a distance of 54.18 feet; thence bearing S77°22'00"W a distance of 484.00 feet; thence bearing N43°10'00"W a distance of 833.00 feet; thence bearing S48°30'00"W a distance of 183.00 feet; thence bearing S26°00'00"W a distance of 615.00 feet; thence bearing S37°41'00"E a distance of 208.02 feet; thence bearing S48°01'03"E a distance of 77.51 feet to a point in the easterly right-of-way of the Kansas and Southwestern Railroad; thence along said right-of-way bearing N39°27'49"W a distance of 1432.00 feet to the point of beginning, except existing road right-of-way.

BENCHMARK:
COW benchmark located at the SW cor of intersection of 29th and Ridge Rd. Elev. = 139.15 City Datum

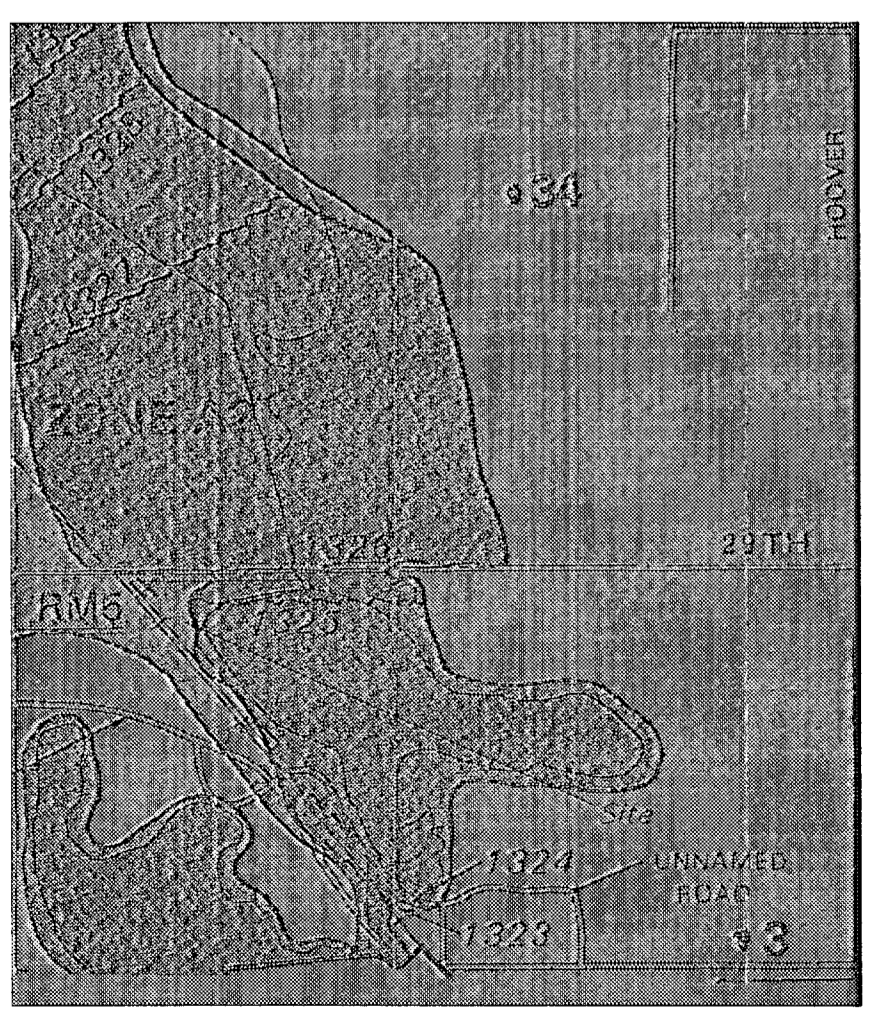
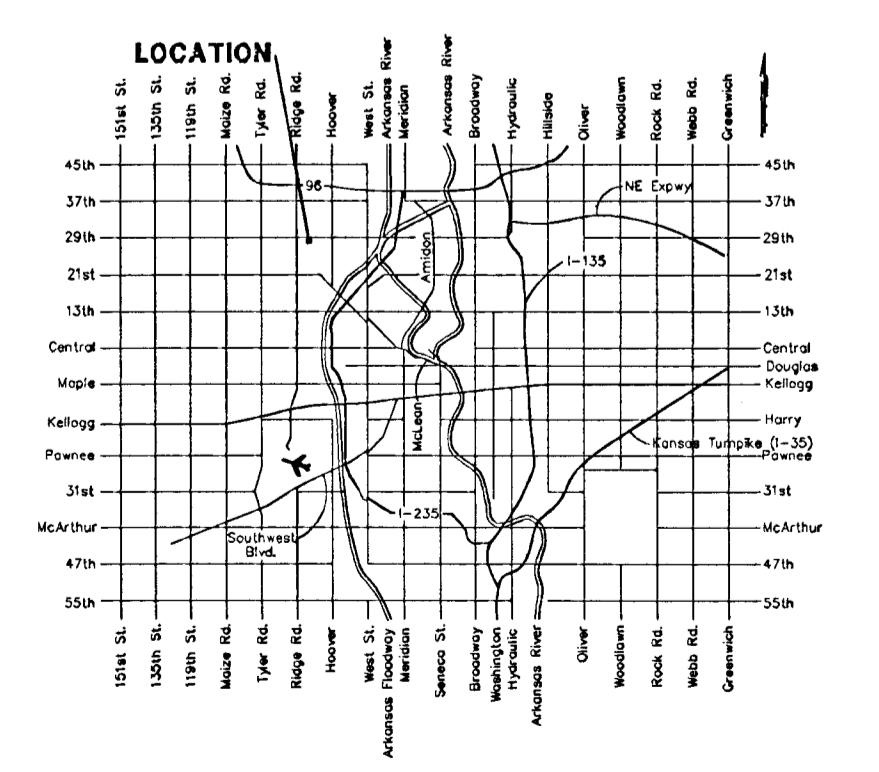
RESERVE "A" IS RESERVED FOR PRIVATE STREETS.
RESERVE "B" IS RESERVED FOR PRIVATE STREETS, OPEN SPACE, LANDSCAPING, BERMS, ENTRY MONUMENTS AND UTILITIES AS SHOWN TO EASEMENTS.
RESERVE "C" IS RESERVED FOR PRIVATE STREETS, OPEN SPACE, LANDSCAPING, AND BERMS.
RESERVE "D" IS RESERVED DRAINAGE PURPOSES, LANDSCAPING, OPEN SPACE, AND BERMS.



- = Deaonut
- = Electric Box
- = Fire Hydrant
- = Gas Meter
- = Guard Post (Boleard)
- = Guy Anchor
- = Gas Valve
- = Light Pole
- = Pole Top
- = Electric Meter
- = Power Pole
- = Sprinkler Hood
- = Sign
- = Sanitary Sewer Manhole
- = Southwestern Bell Manhole
- = Southwestern Bell Pedestal
- = Tree
- = Cased Well
- = Water Meter
- = Water Valve
- = Water Vault
- = Transformer
- = Yard Hydrant (Spigot)



Drainage Note:
This Parcel of Land is Located in A FEMA Flood Hazard Zone A2 Or Zone B Per The Below FIRW Map. (Community) Panel Number: 200321 0125A Effective Date: June 3, 1986.



BRICH-MIX PRODUCTS, INC.
PO BOX 7717
WICHITA, KS 67277