

PRELIMINARY PLAT OF
CLARK ADDITION

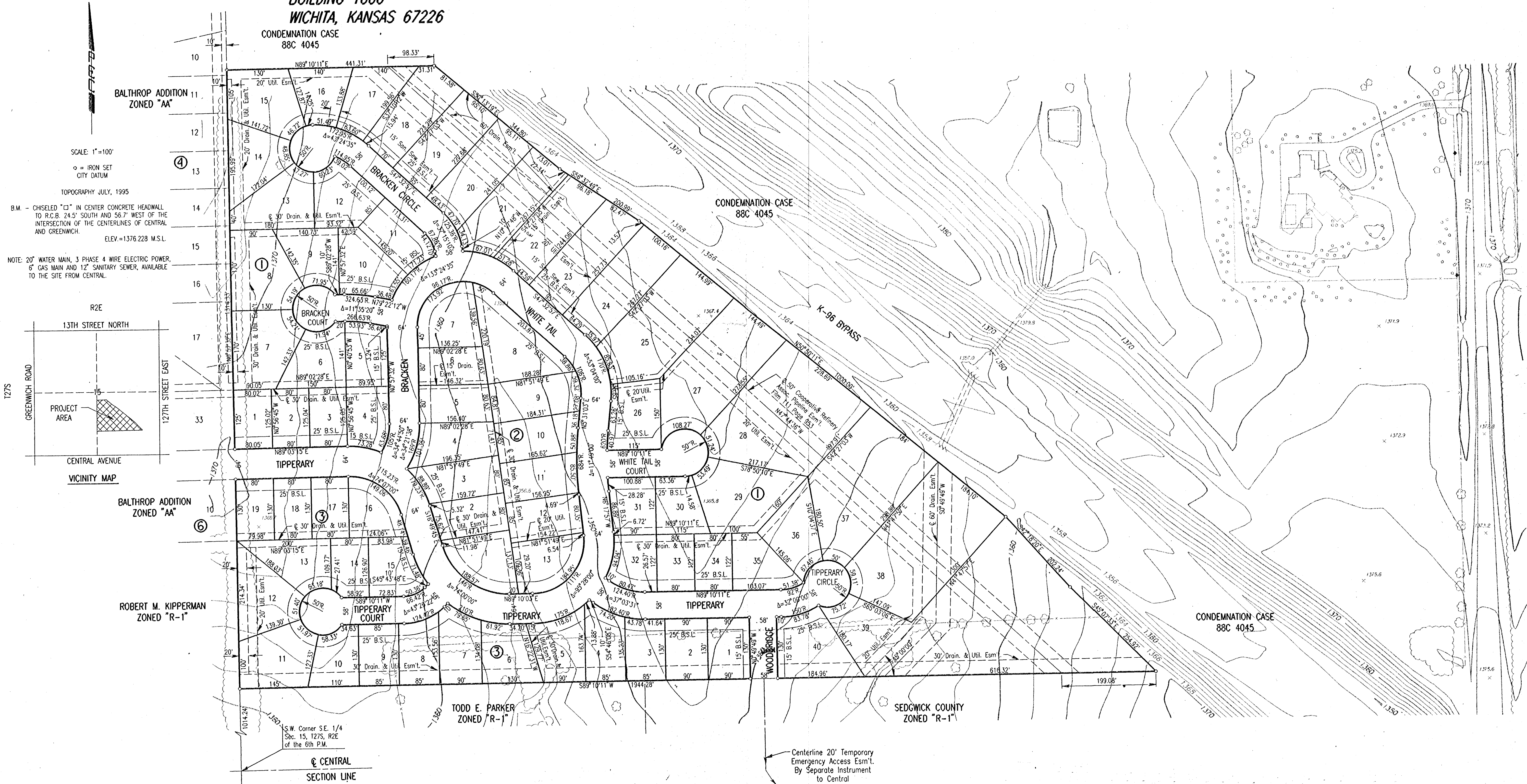
OWNER/DEVELOPER:
RITCHIE ASSOCIATES, INC. AND
STEPHEN L. CLARK
8100 EAST 22ND STREET NORTH
BUILDING 1000
WICHITA, KANSAS 67226

ENGINEER:
PROFESSIONAL ENGINEERING CONSULTANTS, P.A.
303 S. TOPEKA
WICHITA, KANSAS 67202

CONDEMNATION CASE
88C 4045

CONDEMNATION CASE
88C 4045

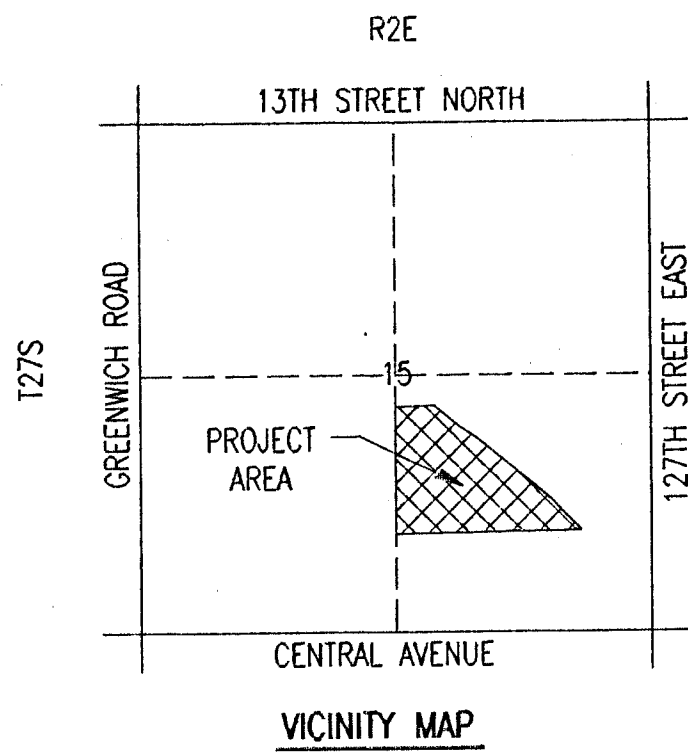
CONDEMNATION CASE
88C 4045



SCALE: 1"=100'
○ = IRON SET
□ = CITY DATUM

TOPOGRAPHY JULY, 1995
B.M. - CHISELED "C" IN CENTER CONCRETE HEADWALL
TO R.C.B. 24.5' SOUTH AND 56.7' WEST OF THE
INTERSECTION OF THE CENTERLINES OF CENTRAL
AND GREENWICH. ELEV.=1376.228 M.S.L.

NOTE: 20" WATER MAIN, 3 PHASE 4 WIRE ELECTRIC POWER,
6" GAS MAIN AND 12" SANITARY SEWER, AVAILABLE
TO THE SITE FROM CENTRAL.



usr:\usr\dm\1994\194895\prelim.dgn
date plotted: 8/4/95
delivered to: sonchez

Centerline 20' Temporary
Emergency Access Esm't.
By Separate Instrument
to Central