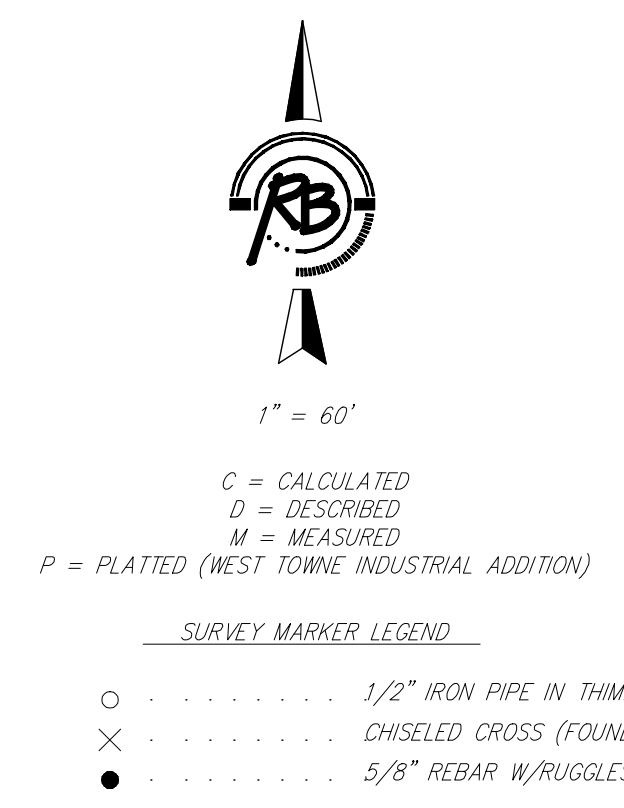
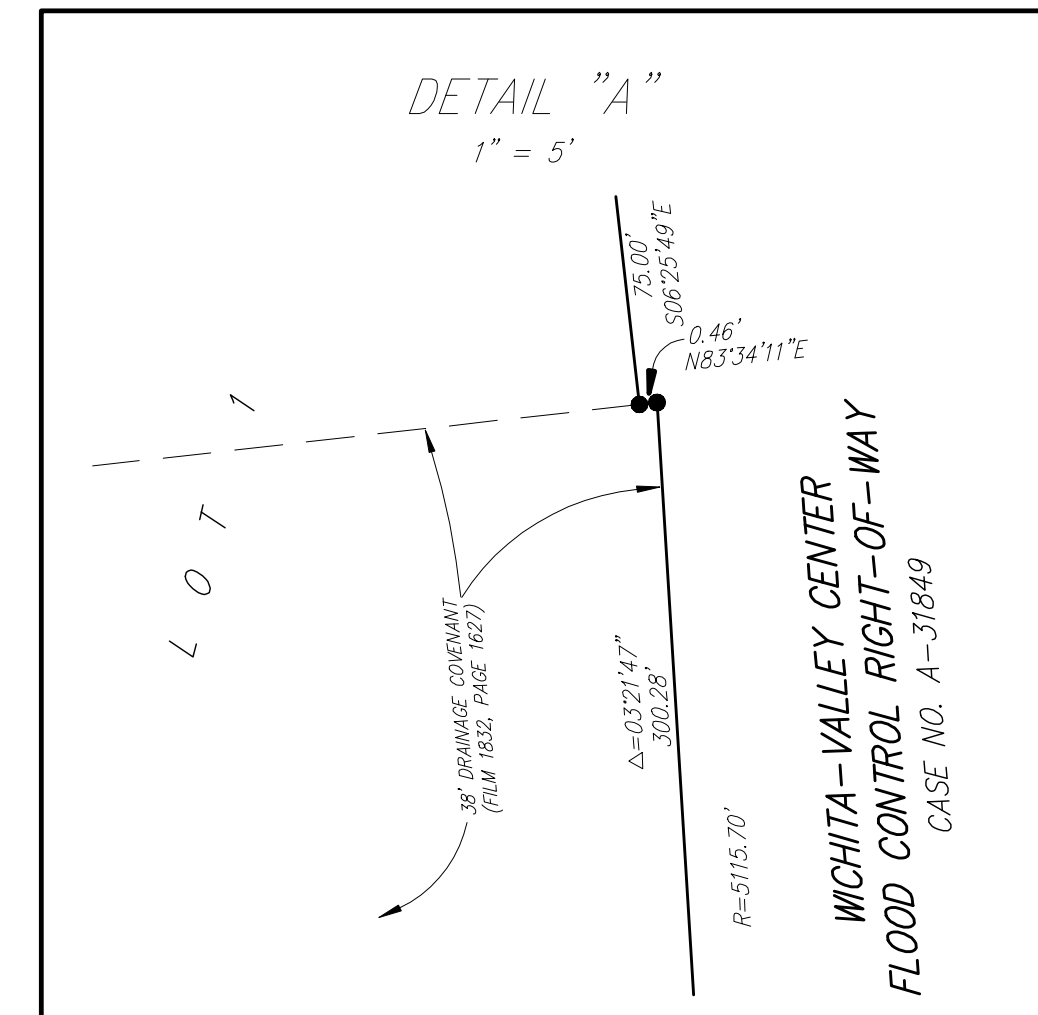
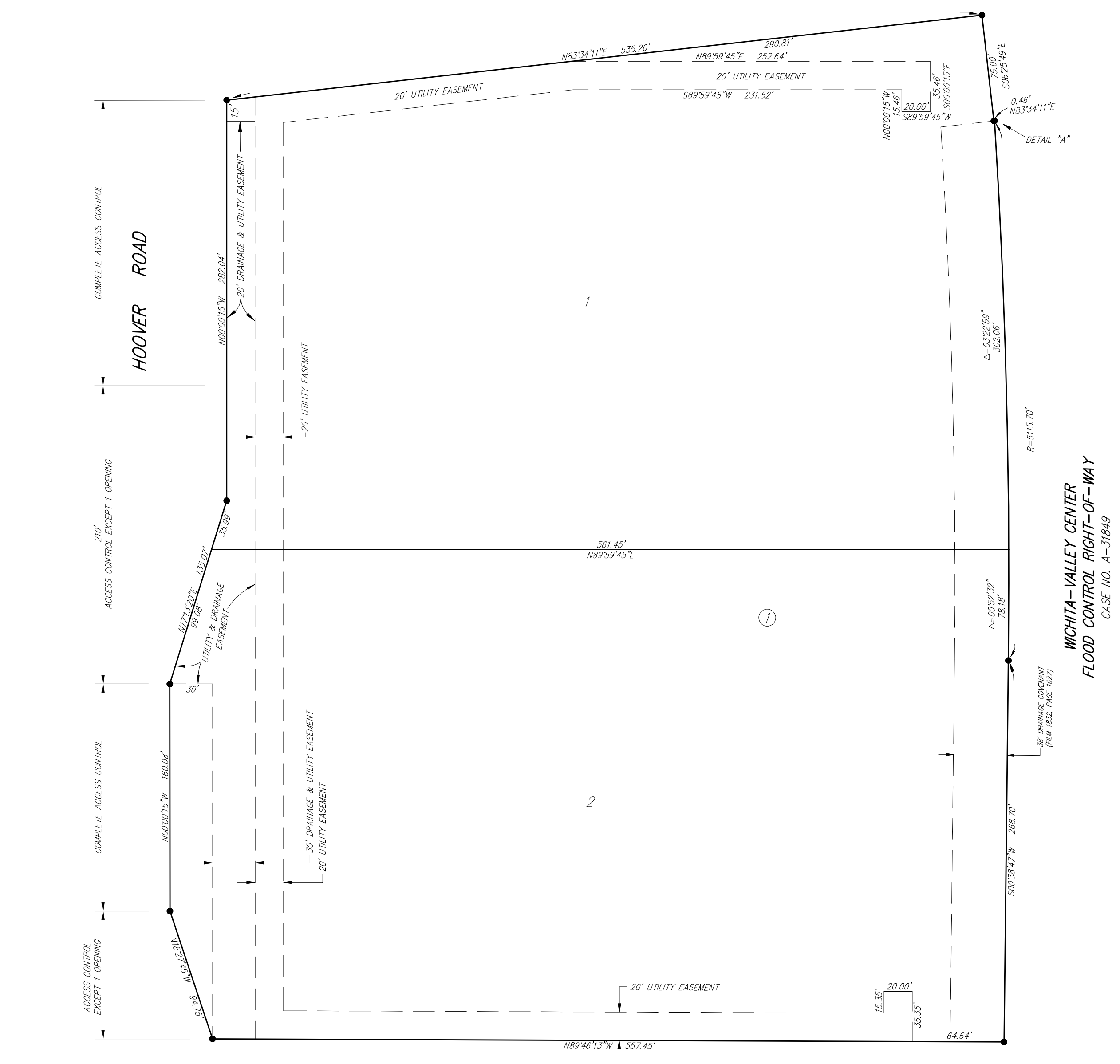
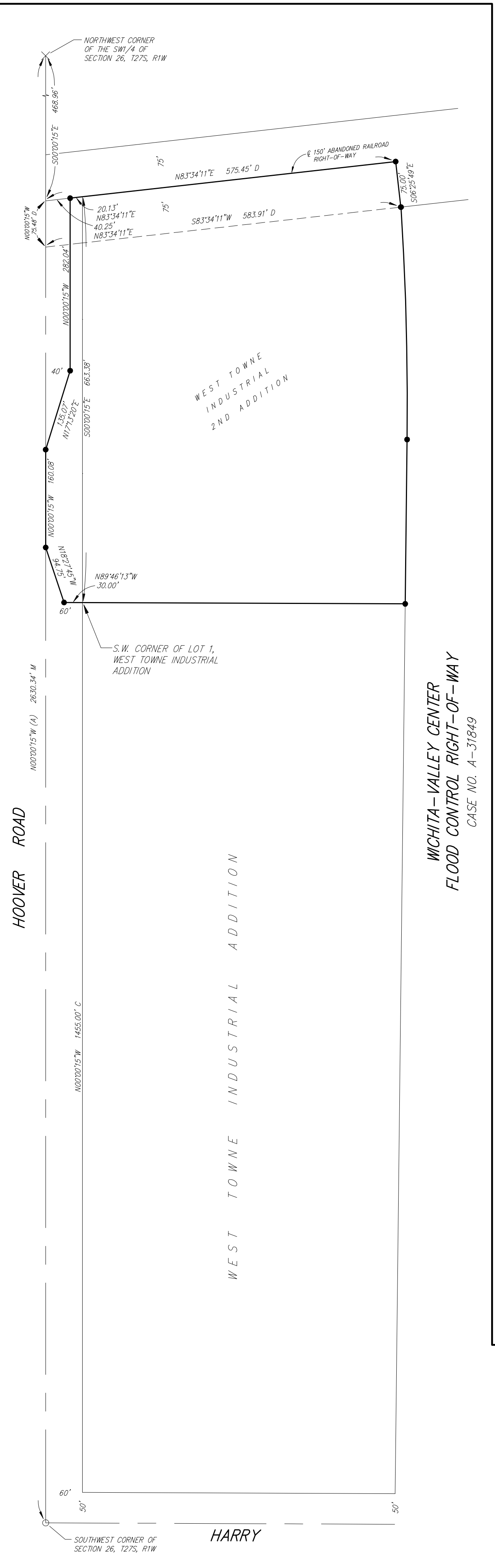


# WEST TOWNE INDUSTRIAL 2ND ADDITION

## Wichita, Sedgwick County, Kansas



BENCH MARK: CITY OF WICHITA BENCH MARK AT THE NORTH END OF THE WEST HEADWALL OF A RCBC UNDER HOOVER, 100' NORTH OF HARRY. ELEVATION = 1301.66 (NGVD29)

ON-SITE BENCH MARK: CHISELED SQUARE ON THE TOP OF CURB AT THE LOT LINE COMMON TO LOTS 1 AND 2, WEST TOWNE INDUSTRIAL ADDITION. ELEVATION = 1308.27 (NGVD29)

State of Kansas)  
Sedgwick County) SS

We, Ruggles & Bohm, P.A., Land Surveyors in aforesaid county and state, do hereby certify that, under the supervision of the undersigned, we have surveyed and platted "WEST TOWNE INDUSTRIAL 2ND ADDITION", Wichita, Sedgwick County, Kansas, and that the accompanying plat is a true and correct exhibit of the property surveyed, described as follows:

Lot 1, West Towne Industrial Addition, Wichita, Sedgwick County, Kansas, AND That part of Hoover Road right-of-way described as commencing at the Northwest corner of the SW1/4 of Section 26, T27S, R1W of the 6th P.M. Sedgwick County, Kansas; thence S00°00'15"E along the west line of said SW1/4, 468.96 feet to the centerline of an abandoned 150 foot wide railroad right of way originally known as the A.T.&S.F. Railroad, later to be known as the Central Kansas Railway L.L.C.; thence N83°34'11"E along said centerline, 40.25 feet for the point of beginning; thence continuing N83°34'11"E along said centerline, 20.13 feet to its intersection with the extended west line of Lot 1, West Towne Industrial Addition, Wichita, Sedgwick County, Kansas; thence S00°00'15"E along said extended west line, 663.38 feet to the southwest corner of said Lot 1, thence N89°46'13"W, 30.00 feet; thence N18°27'45"W, 94.75 feet to the west line of said SW1/4; thence N00°00'15"W along said west line, 160.08 feet; thence N17°13'20"E, 135.07 feet to a line 40.00 feet east of and parallel with said west line; thence N00°00'15"W along said line, 282.04 feet to the point of beginning; AND a tract in the SW1/4 of Section 26, Township 27S, R1W of the 6th P.M., Sedgwick County, Kansas, described as beginning at the intersection of the west line of said SW1/4, and the centerline of an abandoned 150 foot wide railroad right of way originally known as the A.T.& S.F. Railroad, later to be known as the Central Kansas Railway L.L.C.; thence N83°34'11"E along said centerline, 12.45 feet to a point identified as milepost 4.53; thence continuing N83°34'11"E along said centerline, 563 feet; thence S06°25'49"E being perpendicular to said centerline, 75.00 feet to a point on the south line of said abandoned railroad right-of-way, also being the north line of West Towne Industrial Addition, Wichita, Sedgwick County, Kansas; thence S83°34'11"W along said common line, 583.91 feet to a point on the west line of said SW1/4; thence N00°00'15"W along the west line of said SW1/4, 75.48 feet to the point of beginning, EXCEPT the west 60 feet thereof for Hoover Road.

All public easements and dedications are hereby vacated by virtue of K.S.A. 12-512(b).

Ruggles & Bohm, P.A.

Thomas C. Ruggles  
Land Surveyor

Know all men by these presents that we, the undersigned, have caused the land described in the surveyor's certificate to be platted into Lots, a Block, and a Street, to be known as "WEST TOWNE INDUSTRIAL 2ND ADDITION", Wichita, Sedgwick County, Kansas. Access Controls as indicated are hereby granted to the appropriate governing body. The street is hereby dedicated to and for the use of the public. Utility Easements are hereby granted for the construction and maintenance of all public utilities. Drainage Easements are hereby granted to the public as indicated for drainage purposes. A drainage plan has been developed for this plat; the property shall remain at established grades, or as modified with the approval of the City Engineer, and unobstructed to allow for the conveyance of storm water.

Hoover Road LLC

Johnny Stevens  
Member

State of Kansas)  
Sedgwick County) SS

The foregoing instrument acknowledged before me, this \_\_\_\_\_ day of \_\_\_\_\_, 2008, by Johnny Stevens, Member, on behalf of Hoover Road LLC.

\_\_\_\_\_  
Notary Public

My appointment expires \_\_\_\_\_

This plat of "WEST TOWNE INDUSTRIAL 2ND ADDITION", Wichita, Sedgwick County, Kansas, has been submitted to and approved by the Wichita-Sedgwick County Metropolitan Area Planning Commission, Wichita, Kansas.

Dated this \_\_\_\_\_ day of \_\_\_\_\_, 2008.

Wichita-Sedgwick County Metropolitan Area Planning Commission

\_\_\_\_\_  
Chair  
M.S. Mitchell

\_\_\_\_\_  
Secretary  
John L. Schlegel

This plat approved and all dedications shown hereon accepted by the City Council of the City of Wichita, Kansas, this \_\_\_\_\_ day of \_\_\_\_\_, 2008.

At the Direction of the City Council

\_\_\_\_\_  
Mayor  
Carl Brewer

\_\_\_\_\_  
City Clerk  
Karen Sublett

Reviewed in accordance with K.S.A. 58-2005 on this \_\_\_\_\_ day of \_\_\_\_\_, 2008.

\_\_\_\_\_  
Deputy County Surveyor  
Sedgwick County Kansas  
Tricia L. Robello, LS #1246

Entered on transfer record this \_\_\_\_\_ day of \_\_\_\_\_, 2008.

\_\_\_\_\_  
County Clerk  
Don Brace

State of Kansas)  
Sedgwick County) SS

This is to certify that this plat has been filed for record in the office of the Register of Deeds, this \_\_\_\_\_ day of \_\_\_\_\_, 2008, at \_\_\_\_\_ o'clock \_\_\_\_\_ M, and is duly recorded.

\_\_\_\_\_  
Register of Deeds  
Bill Meek

\_\_\_\_\_  
Deputy  
Tonya Buckingham



**Ruggles & Bohm, P.A.**  
Engineering, Surveying, Land Planning  
924 North Main  
Wichita, Kansas 67203  
www.rbkansas.com  
(316) 264-8008  
(316) 264-4621 fax  
E-mail: info@rbkansas.com

DWG FILE: SURVEY BASE  
PROJECT NO. 3255E  
JUNE 25, 2008