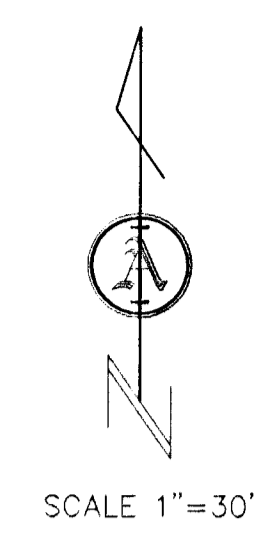


DRAINAGE PLAN FOR BANUELOS ADDITION TO SEDGWICK COUNTY, KANSAS

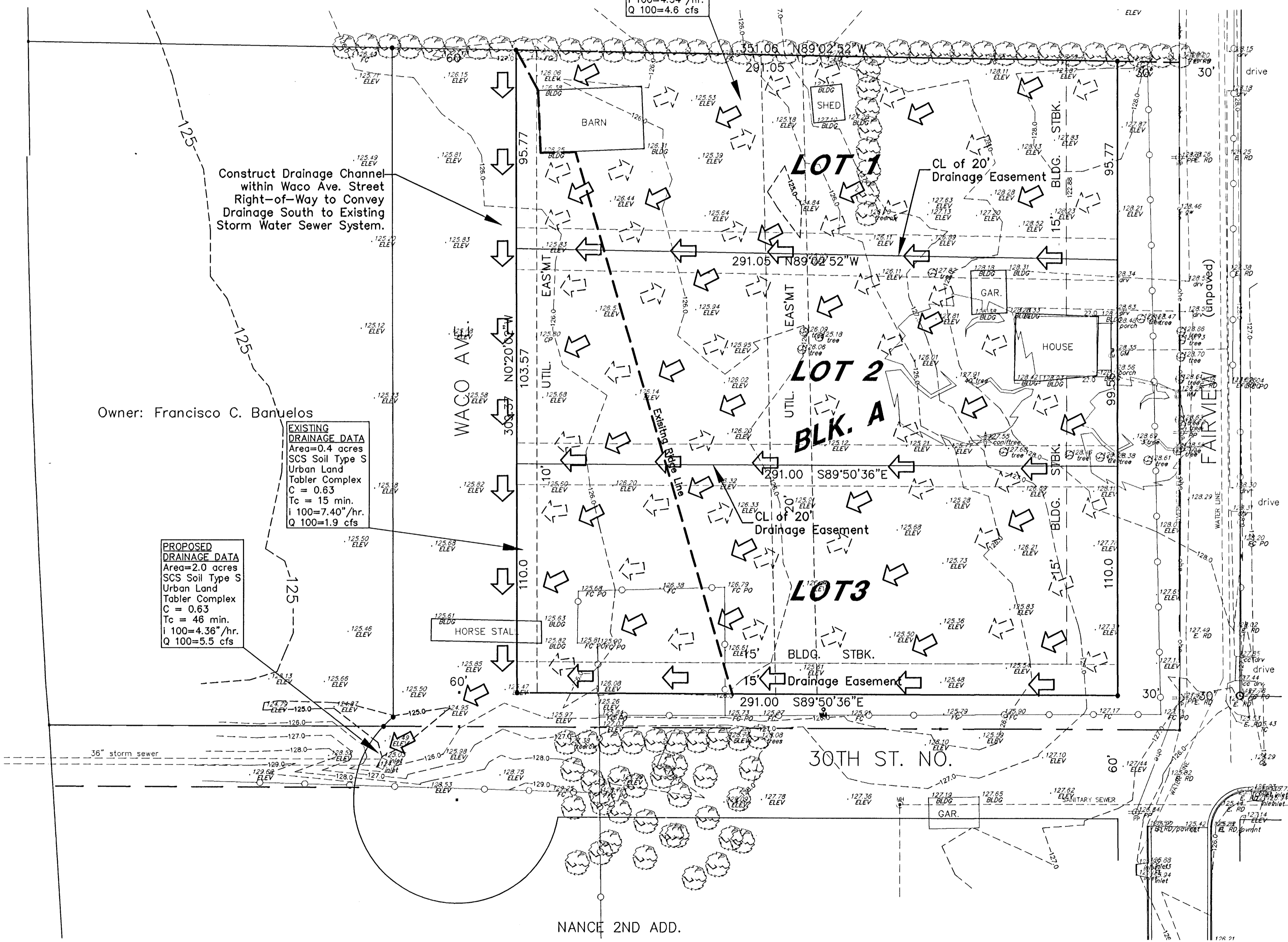
Owner: Francisco C. Banuelos
2209 N. Waco
Wichita, KS 67204



LEGEND

- - set 5/8" rebar & "Armstrong" cap
 - - found 1" iron pipe
 - ⊙ - found thimble
 - - found 1/2" iron pipe
 - ⊠ - concrete monument found
 - M - measured distance
 - P - plot distance
 - cm - calculated from measured distance
 - - property line
 - - center line
 - - - - - easement line
 - - - - - setback line
 - - - - - underground utility
 - - chainlink fence
 - - cable TV riser
 - - telephone riser
 - - fire hydrant
 - - elec. transformer
 - - air conditioner
 - - power pole
 - - manhole
 - - light pole
 - - gas meter
 - - gas valve
 - - water meter
 - - water valve
 - - sign
- = Proposed Drainage Flow Direction
 = Existing Drainage Flow Direction
 = Existing Ridge Line

DRAINAGE DEDICATION



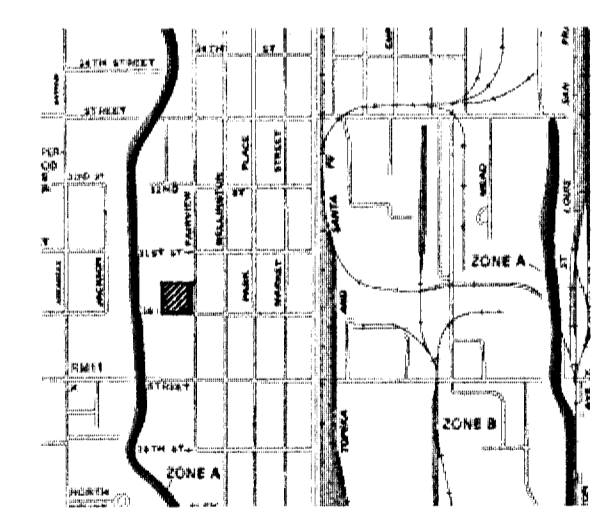
EXISTING DRAINAGE DATA
Area=1.6 acres
SCS Soil Type D
Urban Land
Tabler Complex
C = 0.63
Tc = 4.3 min.
I 100=4.54"/hr.
Q 100=4.6 cfs

EXISTING DRAINAGE DATA
Area=0.4 acres
SCS Soil Type S
Urban Land
Tabler Complex
C = 0.63
Tc = 15 min.
I 100=7.40"/hr.
Q 100=1.9 cfs

PROPOSED DRAINAGE DATA
Area=2.0 acres
SCS Soil Type S
Urban Land
Tabler Complex
C = 0.63
Tc = 46 min.
I 100=4.36"/hr.
Q 100=5.5 cfs

FLOOD ZONE MAP

Sec. 32, T26S, R1E

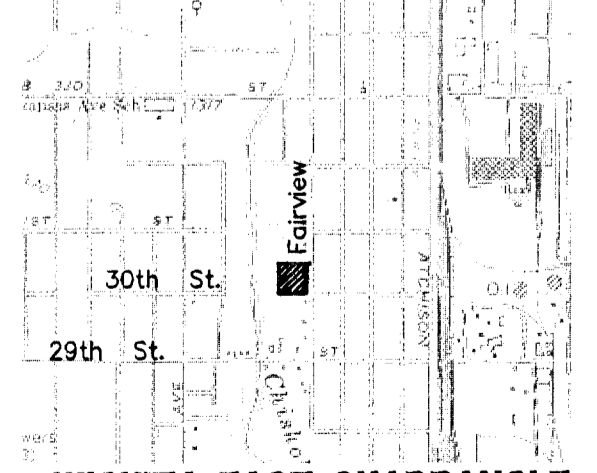


SCALE: 1" = 2,000'

FLOOD ZONE:
Subject property is in Zone B, as shown on Federal Emergency Management Agency (FEMA) Flood Insurance Rate Map (FIRM) for Sedgwick County, Kansas, Community Panel Number 200328 0010 B, effective May 15, 1986.

QUADRANGLE MAP

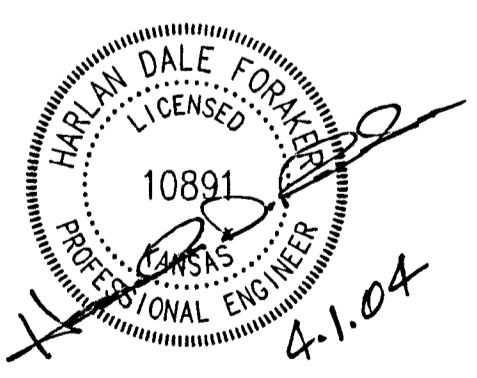
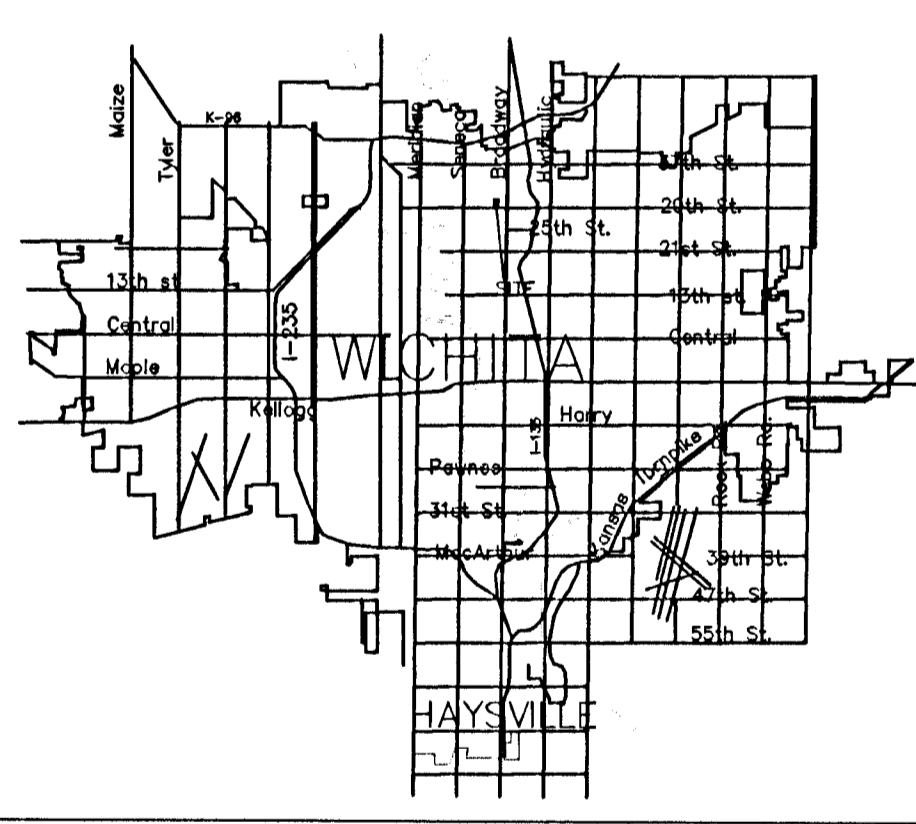
Sec. 32, T26S, R1E



WICHITA EAST QUADRANGLE
7.5 Minute Series

SCALE: 1" = 2,000'

LOCATION MAP



DRAINAGE PLAN PREPARED BY:
CERTIFIED ENGINEERING DESIGN, P.A.
810 WEST DOUGLAS, SUITE C
WICHITA, KANSAS 67203
PH: (316) 262-8808
FAX: (316) 262-1669



SHEET 1
TOTAL 1

SURVEY DISCLAIMER:
TOPOGRAPHIC SURVEY AND CONTOUR MAP USED IN PREPARING PLANS WAS PROVIDED BY ARMSTRONG LAND SURVEY, P.A., 250 N. MATHEWSON, WICHITA, KS. ENGINEER DOES NOT GUARANTEE SURVEY ELEVATIONS FOR ACCURACY. CONTRACTOR SHALL VERIFY ELEVATIONS AND NOTIFY ENGINEER OF ANY DISCREPANCIES.



**ARMSTRONG
LAND SURVEY, P.A.**

1601 E. HARRY
WICHITA, KANSAS 67211
PH - (316) 263-0092
Fax - (316) 263-0092