

CROSS POINTE 2ND ADDITION

AN ADDITION TO WICHITA, SEDGWICK COUNTY, KANSAS

DATE OF PREPARATION: SEPTEMBER, 2007
 DATE OF TOPOGRAPHIC SURVEY: DECEMBER 2004
 OWNER: SLAWSON EAST, INC., A KANSAS CORPORATION
 2001 N. OAK CREEK PARKWAY
 WICHITA, KS 67203
 SUBDIVIDER: PROFESSIONAL ENGINEERING CONSULTANTS, P.A.
 303 S. TOPEKA
 WICHITA, KS 67202

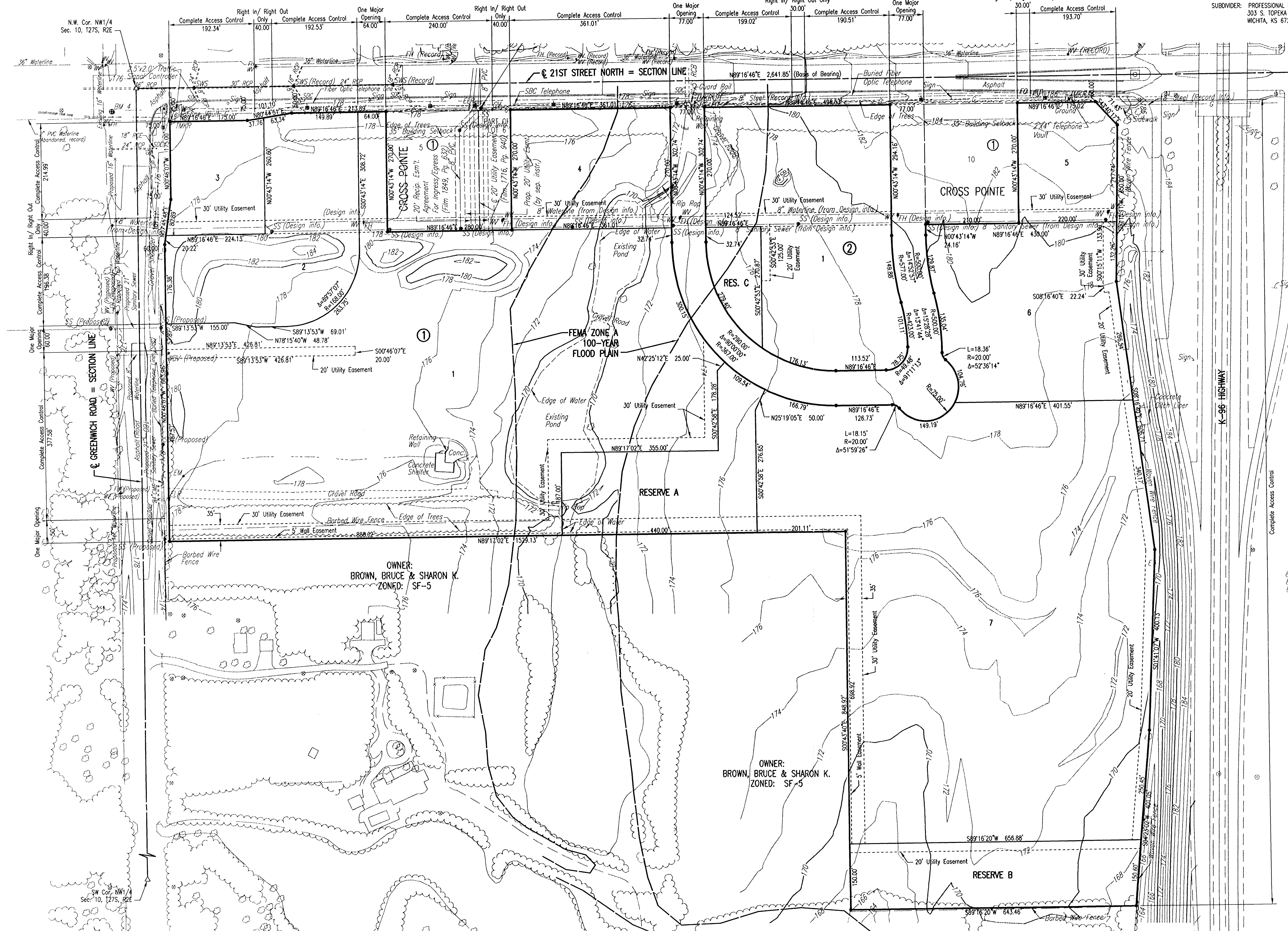
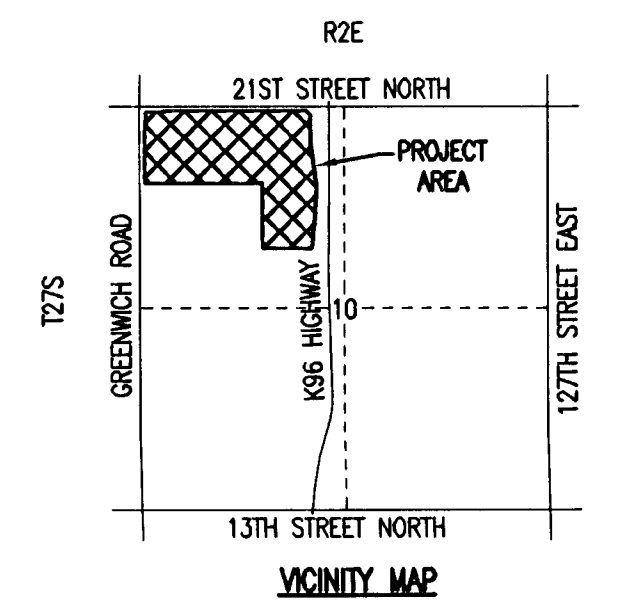
SCALE: 1" = 100'

• = 1/2" REBAR W/PEC CAP UNLESS OTHERWISE NOTED
 Δ = SECTION CORNER

TOPOGRAPHY BY PHOTOGRAMMETRIC METHODS FROM AERIAL PHOTOGRAPHS
 TAKEN ON APR 9, 2003.
 BENCHMARK #4: CHISELED SQUARE ON CONCRETE BASE TRAFFIC SIGNAL
 POLE AT S.W. CORNER 21ST AND GREENWICH.
 ELEV. = 176.16 C.O.W. DATUM

LEGEND

- Power Pole
- ELR Electric Riser
- EM Electric Meter
- GV Gas Valve
- Sign
- SS Sanitary Sewer Manhole
- MKR Telephone Marker
- ☐ Telephone Box
- ☒ Transformer
- ☒ Traffic Signal J-box
- BM Benchmark
- ☐ Traffic Signal Manhole
- ☐ Traffic Signal Pole
- ☒ Traffic Signal Controller
- W Water Valve
- FH Fire Hydrant
- SWS Storm Drain Manhole
- WBV Blowoff Valve
- - U E - - U E - - Buried Electric
- - G - - Gas Line
- - O E - - O E - - Overhead Electric
- - S S - - Sanitary Sewer
- - T T - - Buried Telephone
- - X X - - Fence Types
- - Retaining Wall
- - W Waterline
- - O TV - - Overhead Cable TV
- - Culvert
- UTILITY POLE
- COMMERCIAL SIGN
- TREE



Sheet 10-22-2007 10:54:15 AM by AEE
 Plot Scale: 1:100 10-22-2007 11:00:26 AM
 C:\2007\102565\102565 One Step page 2 of 2