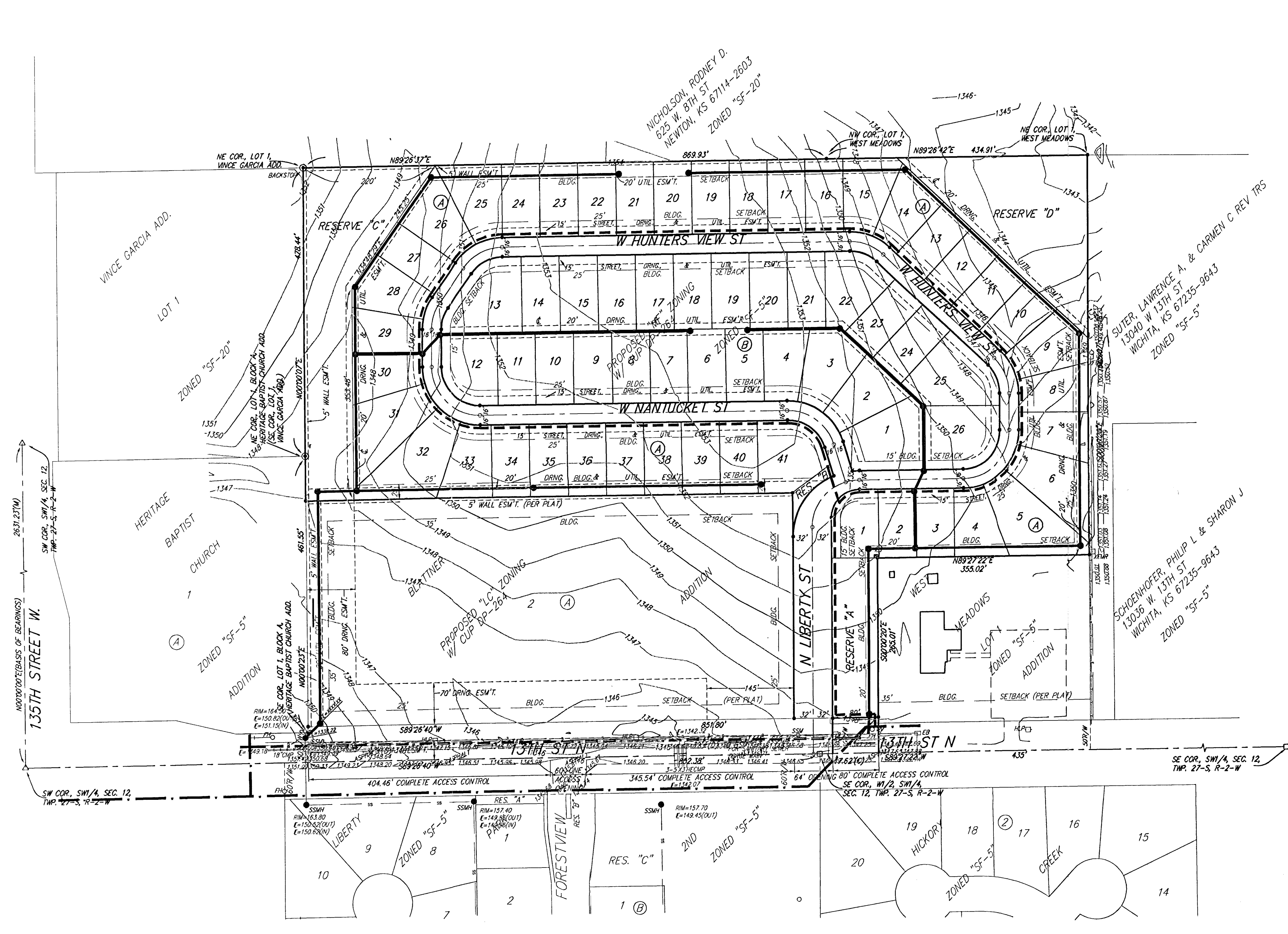
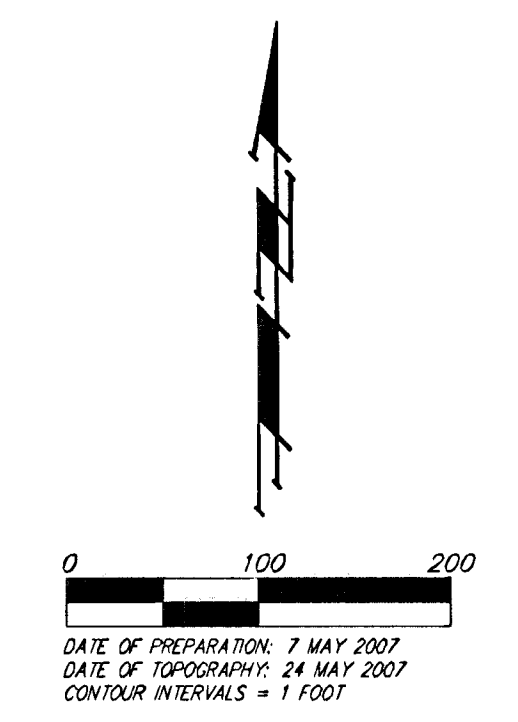


# UTILITY CONCEPT CRYSTAL GARDENS ADDITION WICHITA, SEDGWICK COUNTY, KANSAS



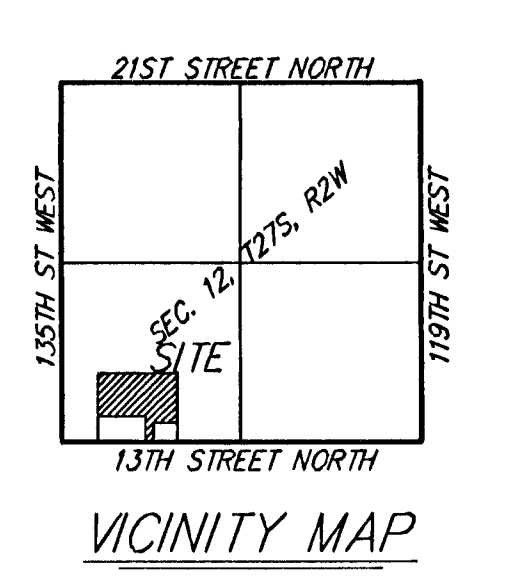
**LEGEND**

- Proposed Water Line (8" Unless Noted Otherwise)
- - - Existing Water Line (8" Unless Noted Otherwise)
- Proposed Sanitary Sewer Line (8" Unless Noted Otherwise)
- - - Existing Sanitary Sewer Line (8" Unless Noted Otherwise)
- Proposed Sanitary Sewer Manhole
- Proposed Fire Hydrant
- Proposed Sanitary Sewer Flow



NOTE:  
ADDITIONAL BUILDING SETBACKS PER COMMUNITY UNIT  
PLAN CP-264

- EB □ = Electric Box
- FH ○ = Fire Hydrant
- HLP □ = High Line Pole
- LP ○ = Light Pole
- SSMH ● = Sanitary Sewer Manhole
- T ○ = Tree
- WV = Water Valve
- TRF □ = Transformer



**CRYSTAL GARDENS  
ADDITION**

7 MAY 2007

**Baughman Company, P.A.**  
315 Ellis St. Wichita, KS 67211 P 316.262.7271 F 316.262.0149  
ENGINEERING | SURVEYING | PLANNING | LANDSCAPE ARCHITECTURE  
F:\PLAT\CRYSTALGARDENSADDITION\DWG\CRYSTALGARDENS.DWG