

**Legal Description:**

Lots 46 and 48 on Hillside, Mueller's Sub-division of Lots 1 and 4 in Block 4 in Richman's 2nd Addition, Wichita, Kansas.

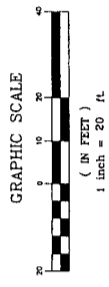
**OWNER:**  
 Cy Wiggins  
 251 S. Hillside Ave.  
 Wichita, Kansas 67211

**GROSS SIZE**  
 6,901.20 Sq. Ft.  
 0.15 Acres

**NET SIZE OF PLAT**  
 5,376.66 Sq. Ft.  
 0.12 Acres

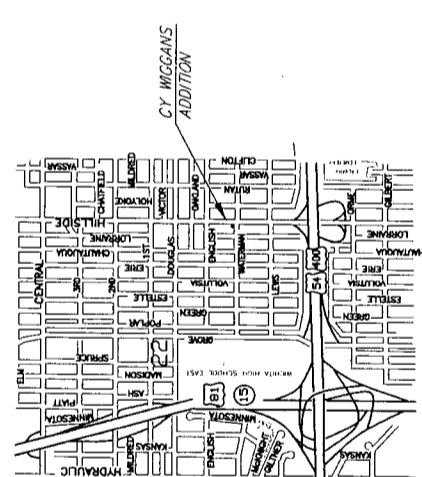
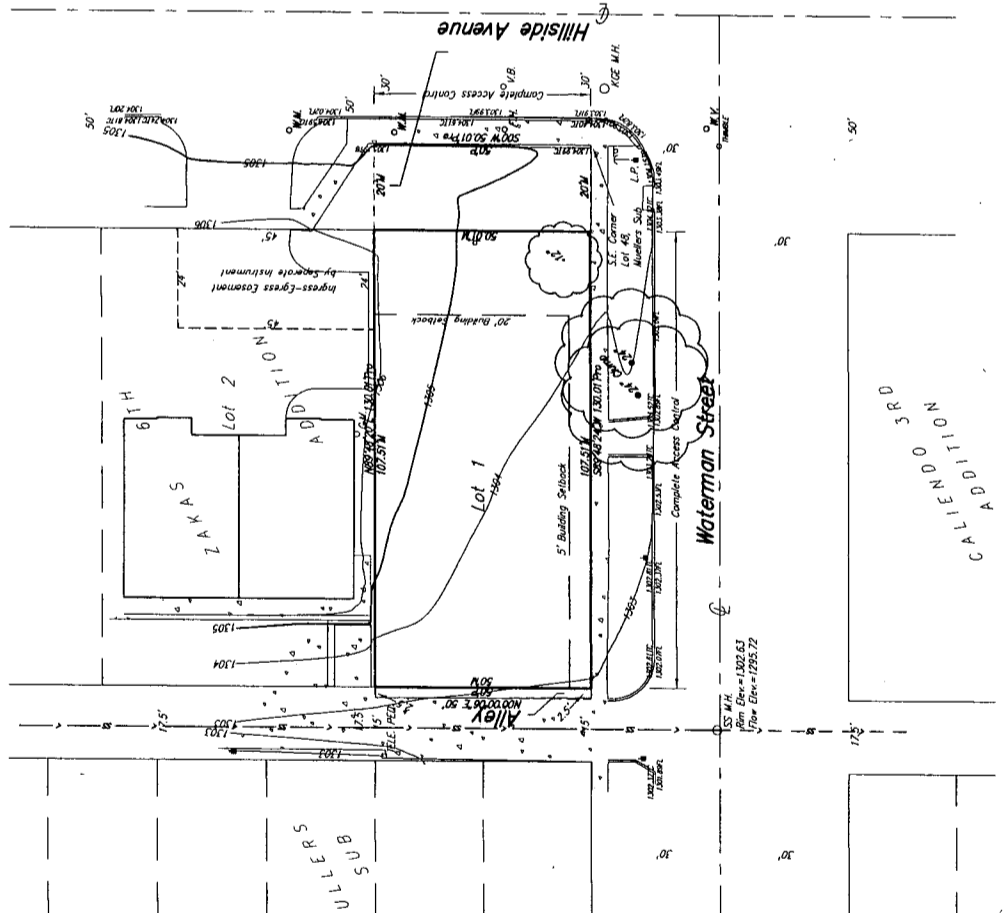
**MINIMUM LOT SIZE**  
 5,376.66 Sq. Ft.

**ZONING**  
 CO - General Office  
**CONTROL NUMBER**  
 141819

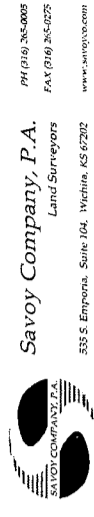


Bench Mark: City of Wichita Std. Bldg.  
 N.E. Corner of Douglas & Hillside  
 Elevation = 1114.38 MGD  
 On Site B.M.: "D" Cur. N. Oak Return  
 Elevation = 1114.38 MGD  
 Direction = 159°46' WGD

- LEGEND**
- C = GAS MAIN
  - SS = SANITARY SEWER
  - SSS = STORM WATER SEWER
  - UST = UNDERGROUND TELEPHONE
  - BM = BENCH MARK
  - TEL. RD. = TELEPHONE REESTABLISHMENT
  - F.H. = FIRE HYDRANT
  - CA = CITY ANCHOR
  - GM = GAS METER
  - L.P. = POWER POLE W/ LIGHT
  - P. = POWER POLE
  - S. = SIGN
  - V.B. = VALVE BOX
  - W.M. = WATER METER
  - W.V. = WATER VALVE
  - AGE W.H. = KANSAS GAS ELECTRIC MANHOLE
  - S.S.M.H. = SANITARY SEWER MANHOLE



# PRELIMINARY PLAT CY WIGGANS ADDITION WICHITA, SEDGWICK COUNTY, KANSAS



**Savoy Company, P.A.**  
 Land Surveyors  
 333 S. Emporia, Suite 104, Wichita, KS 67202  
 PH (316) 266-0888  
 FAX (316) 266-0225  
 www.savoyco.com