

# Proposed Drainage Plan

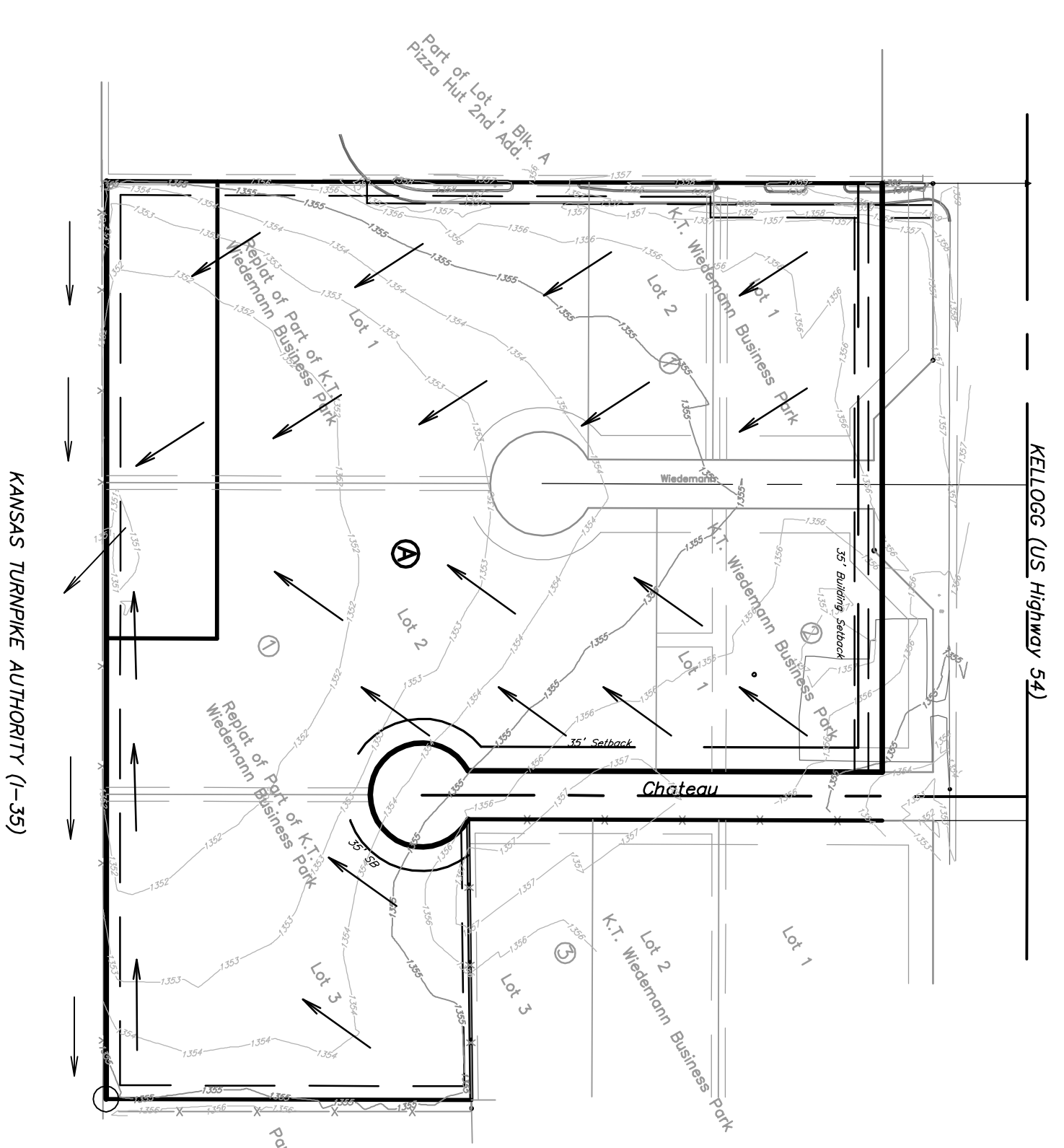
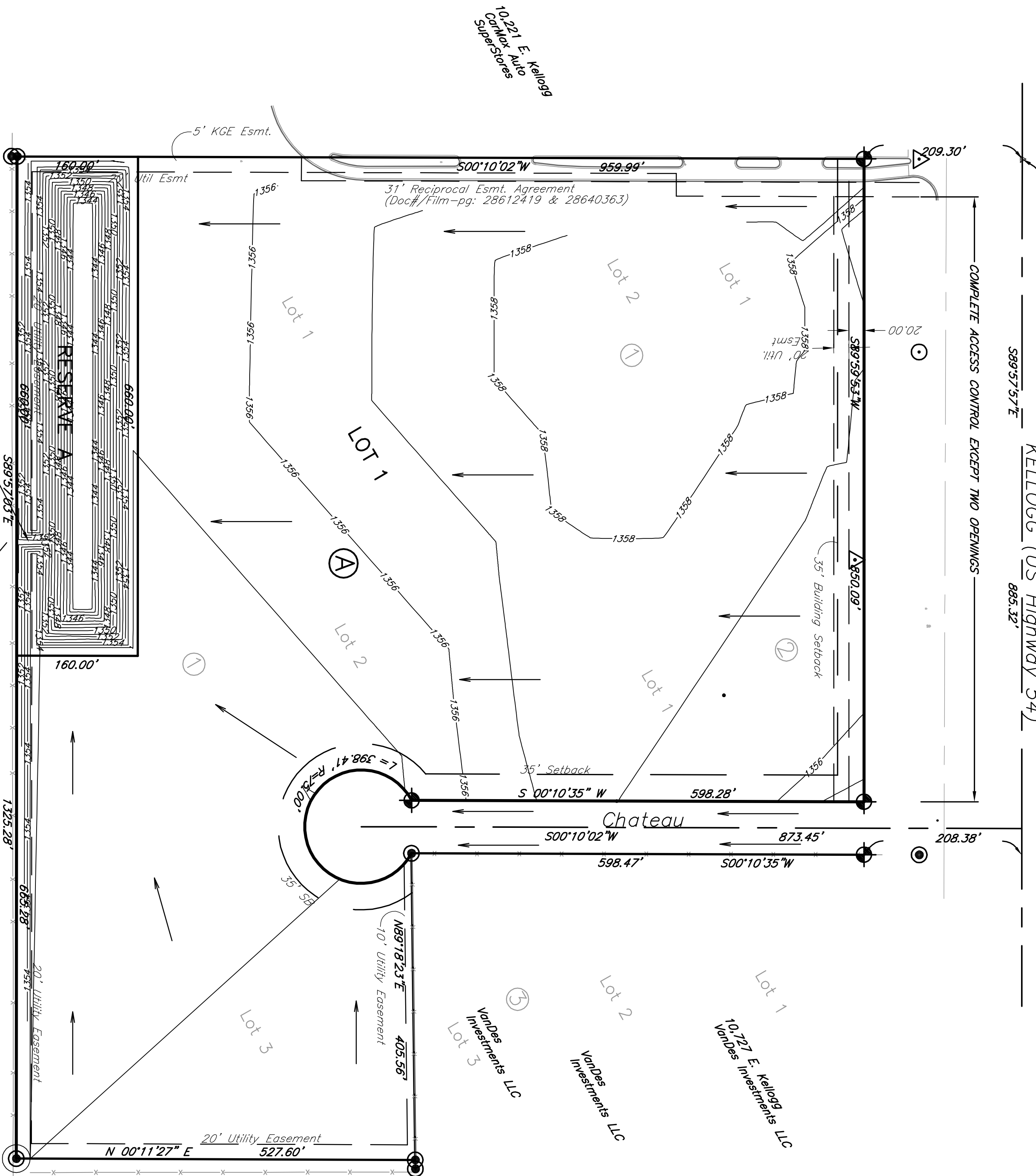
NW Corner of the NE 1/4, Sect. 28, T27S, R2E.

KELLOGG (US Highway 54)

# DRAINAGE PLAN FOR DAVIS-MOORE 14th Addition

## Existing Drainage Fields

NOT TO SCALE



**Existing Site Drainage**

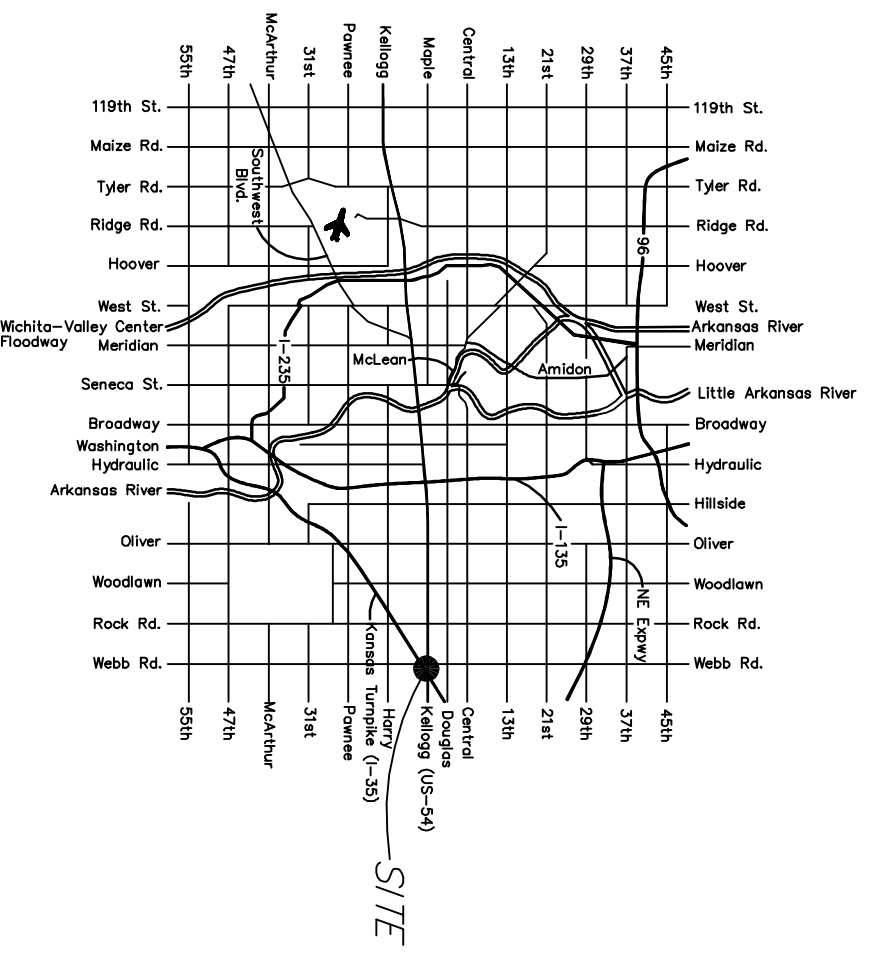
Block #	Acres	Tc	C5	15 C100	1100	05	0100
Proposed Lot 2, 2.19	4.7 min	0.33	2.54	0.63	4.30	22.29cfs	73.66cfs
Adjacent ROW 2.91	4.7 min	0.33	2.54	0.63	4.30	2.44cfs	7.88cfs
		Total Runoff=				25.23cfs	81.54cfs

**Proposed Site Drainage**

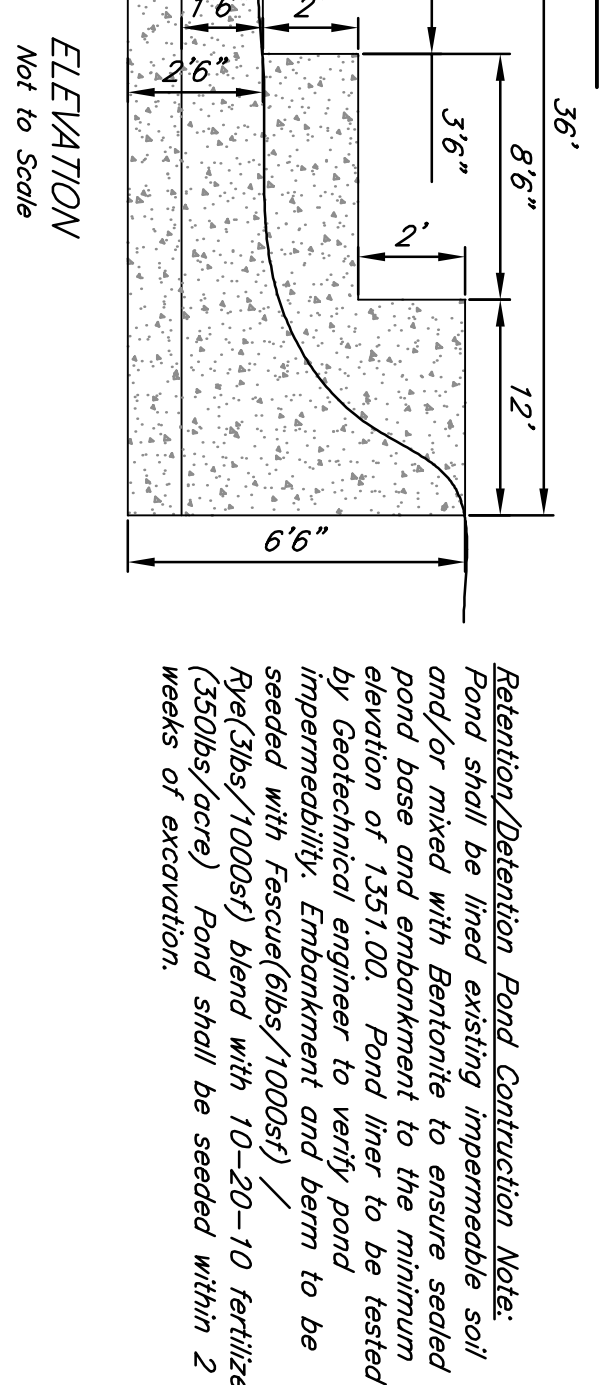
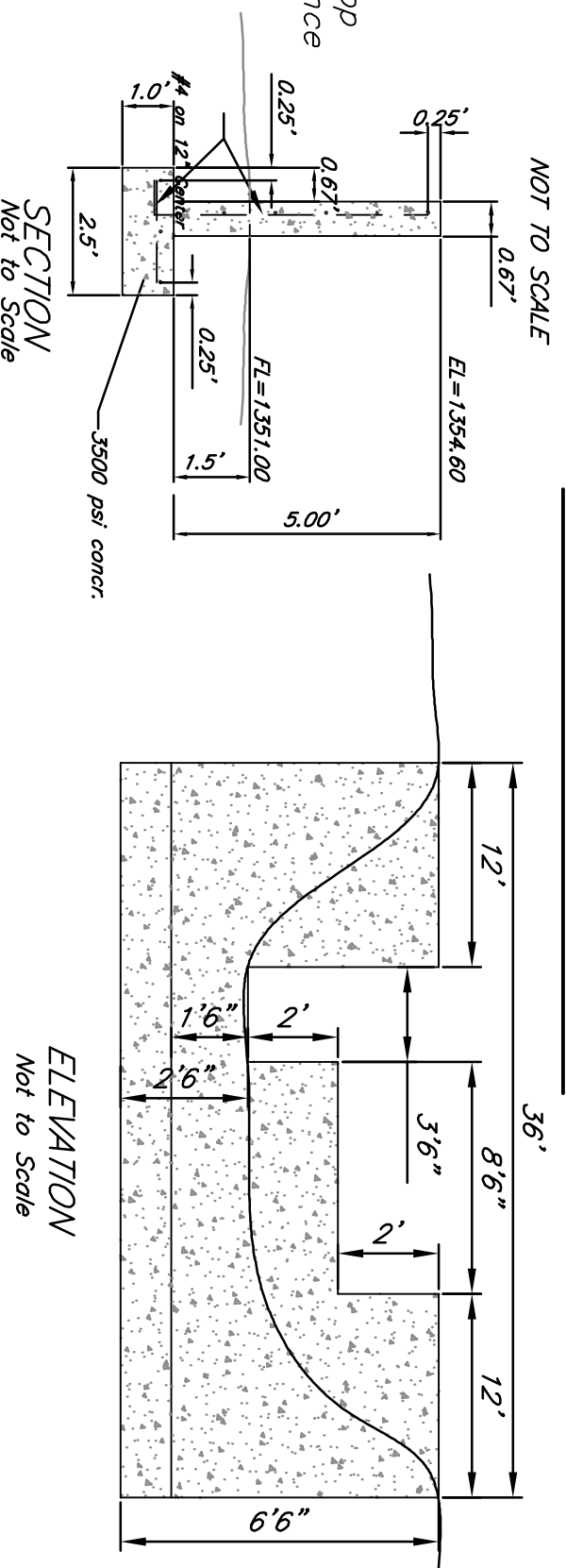
Block #	Acres	Tc	C5	15 C100	1100	05	0100
Proposed Lot 1, 2.719	1.8 min	0.69	4.40	0.80	6.80	78.80cfs	141.91cfs
Adjacent ROW 2.91	1.8 min	0.69	4.40	0.80	6.80	82.52cfs	143.92cfs
		Detention Pond Runoff=				32.18cfs	79.95cfs

**Engineer's Note:**  
Site drainage calculations developed using the Rational Method for peak runoff. "C" & "T" values established from the City of Wichita Design Criteria and Documentation. Detention Pond calculations developed from Stor-Ind Method. Tc adjusted for maximum pond outfall quantities. Established model with downstream assumption: KTA ditch will stand water of approximately 1.5'. See Appendix C of the Davis Moore 14th Addition Drainage Report.

## LOCATION MAP

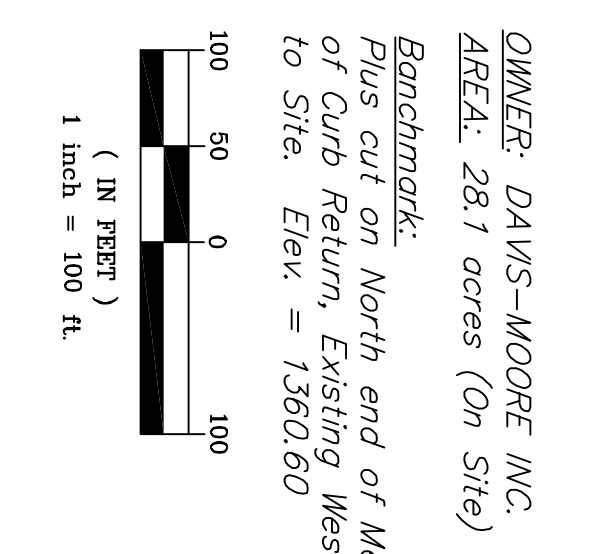


## Concrete Weir Structure



**Retention/Detention Pond Construction Note:**  
Pond shall be lined with existing impermeable soil and/or minked with bentonite to ensure sealed pond base. 1351.00' Pond shall be lined as tested by geotechnical engineer to verify pond impermeability. Embankment and berm to be seeded with fescue/grass (1000sf) / Pect/50sf/1000sf) blend with 10-20-10 fertilizer (350lbs/acre). Pond shall be seeded within 2 weeks of excavation.

- LEGEND**
- Cedar Tree
  - Fire Hydrant
  - Light Pole
  - Manhole
  - Power Pole
  - Sign
  - Tree
  - Water Valve
  - KGS Kansas Gas Service Line
  - SS Sanitary Sewer
  - Fence



**Kemiller engineering**

516 S. Market,  
Wichita, KS 67202

316/264-0242