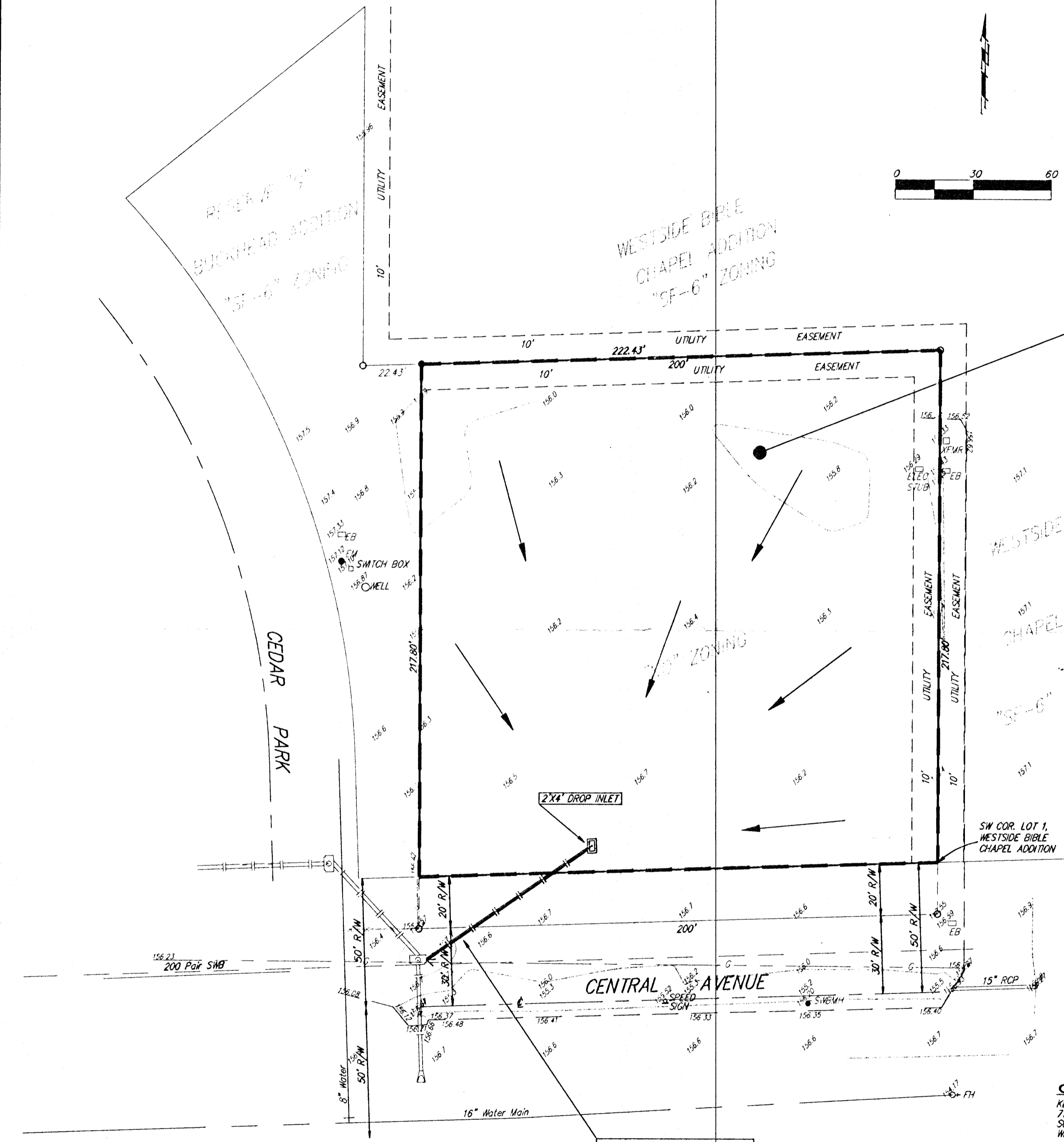


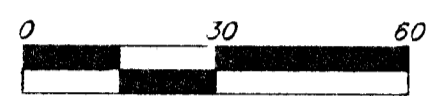
DRAINAGE PLAN

DEERGLLEN OFFICE PARK ADDITION

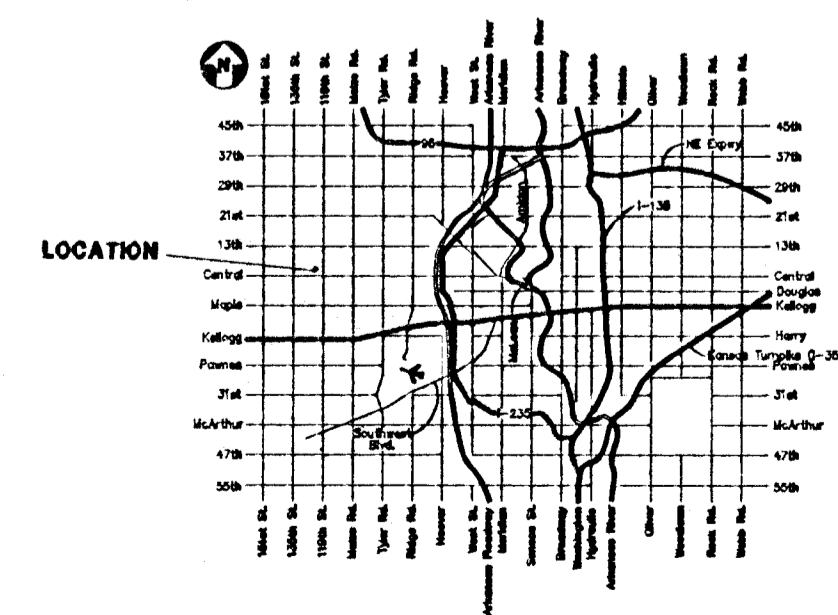
SEDGWICK COUNTY, KANSAS



- LEGEND**
- = #4 Baughman Rebar (Set)
 - = #4 Baughman Rebar (Found)
 - DI = Drop Inlet
 - EB = Electric Box
 - EM = Electric Meter
 - FH = Fire Hydrant
 - LP = Light Pole
 - Sign = Sign
 - SWBMH = Southwestern Bell Manhole
 - SWBCH BOX = Switch Box
 - Well = Cased Well
 - TRFR = Transformer



DRAINAGE AREA = 0.9 ACRES
 $C_c = 0.90$
 $T_c = 15 \text{ min.}$
 $Q_2 = 3.1 \text{ cfs}$
 $Q_{10} = 3.7 \text{ cfs}$
 $Q_{100} = 6.0 \text{ cfs}$



VICINITY MAP

OWNER:
 KELSEY DEVELOPMENT, INC.
 716 N. 119TH STREET WEST
 SUITE 223
 WICHITA, KS 67212

LEGAL DESCRIPTION:
 A TRACT IN THE SOUTHEAST QUARTER OF SECTION 14, TOWNSHIP 27, RANGE 2 WEST OF THE 8TH P.M., SEDGWICK COUNTY, KANSAS, DESCRIBED AS THE WEST 200 FEET OF THE EAST 600 FEET OF THE SOUTH 272.8 FEET OF SAID SOUTHEAST QUARTER.

BENCHMARK:
 CITY OF WICHITA BENCHMARK SOUTHEAST CORNER INTERSECTION 40 FEET EAST AND 45 FEET SOUTH OF CENTER LINE BOTH 58.92 FEET SE CORNER IRON 21.7 FEET WEST OF FACE WALK 14/5. 14.6 FEET NORTH OF WALK E/W. ELEVATION = 158.93 CITY DATUM