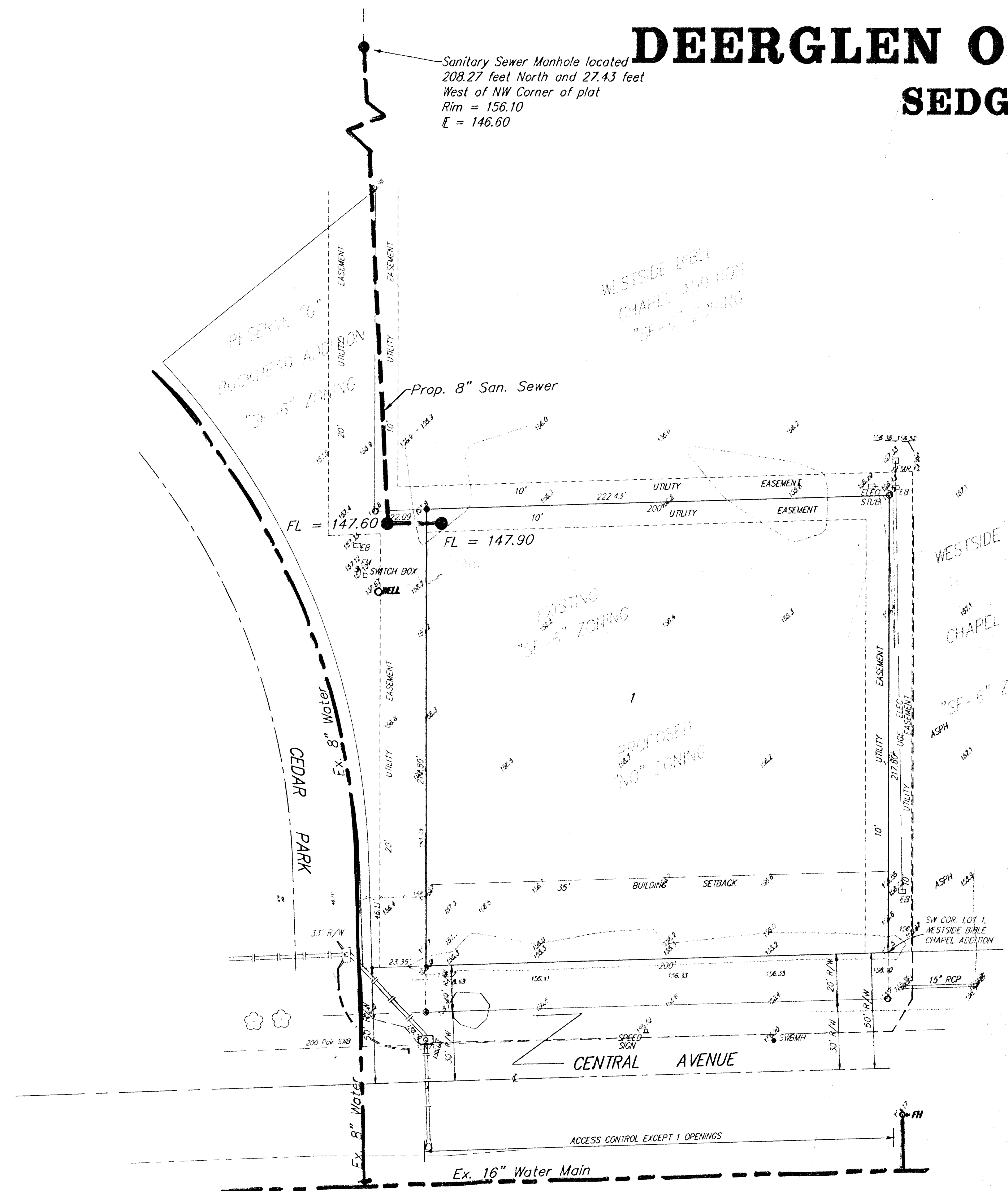


UTILITY PLAN

**DEERGLEN OFFICE PARK ADDITION
SEDGWICK COUNTY, KANSAS**

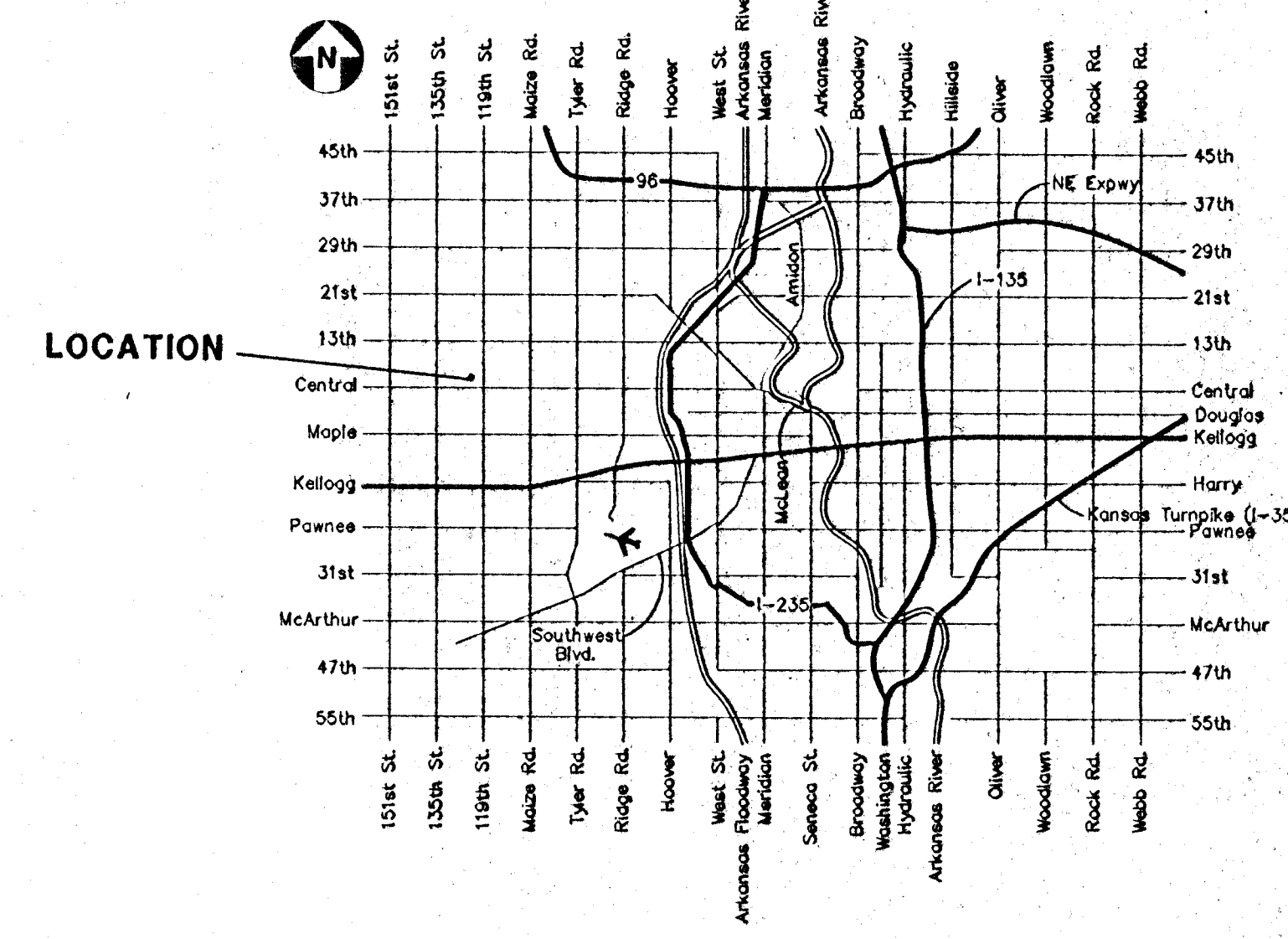
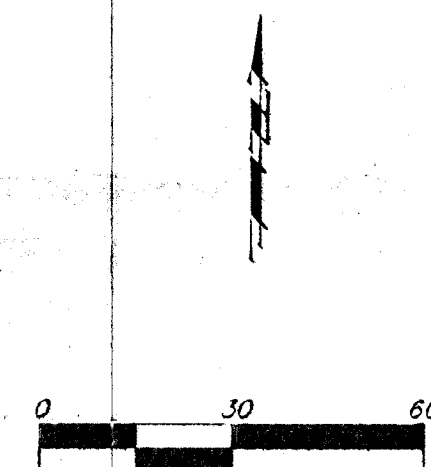


- LEGEND**
- = #4 Baughman Rebar (Set)
 - = #4 Baughman Rebar (Found)
 - DI = Drop Inlet
 - EB = Electric Box
 - EM = Electric Meter
 - ⊕ FH = Fire Hydrant
 - LP = Light Pole
 - ⊙ Sign = Sign
 - SSMH = Southwestern Bell Manhole
 - SWITCH BOX = Switch Box
 - Well = Cased Well
 - XFRM = Transformer

OWNER:
 WELSEY DEVELOPMENTS, INC.
 ATTN: PAUL WELSEY
 716 N. 119TH STREET WEST
 SUITE 223
 WICHITA, KS 67212

LEGAL DESCRIPTION:
 A TRACT IN THE SOUTHEAST QUARTER OF SECTION 13, TOWNSHIP 27, RANGE 2 WEST OF THE 6TH E.M., SEDGWICK COUNTY, KANSAS, DESCRIBED AS THE WEST 200 FEET OF THE EAST 800 FEET OF THE SOUTH 217.8 FEET OF SAID SOUTHEAST QUARTER.

BENCHMARK:
 CITY OF WICHITA BENCHMARK SOUTHEAST CORNER INTERSECTION, 40 FEET EAST AND 46 FEET SOUTH OF CENTER LINE BOTH, 58.92 FEET SE CORNER FROM 21.7 FEET WEST OF FACE WALK N/S, 13.6 FEET NORTH OF WALK E/W, ELEVATION = 156.93 CITY DATUM



VICINITY MAP

1997 DECEMBER 1