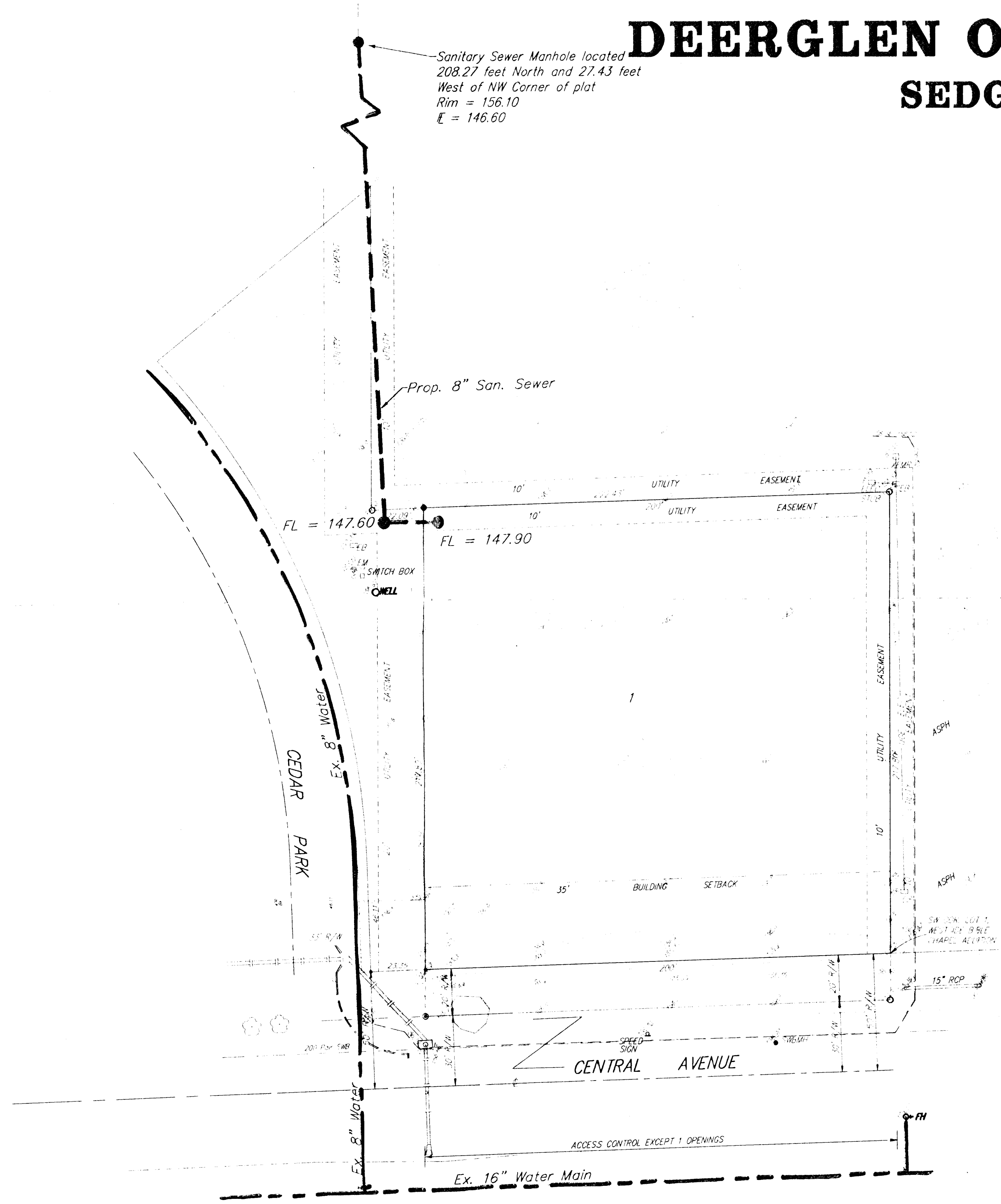


UTILITY PLAN

DEERGLEN OFFICE PARK ADDITION

SEDGWICK COUNTY, KANSAS



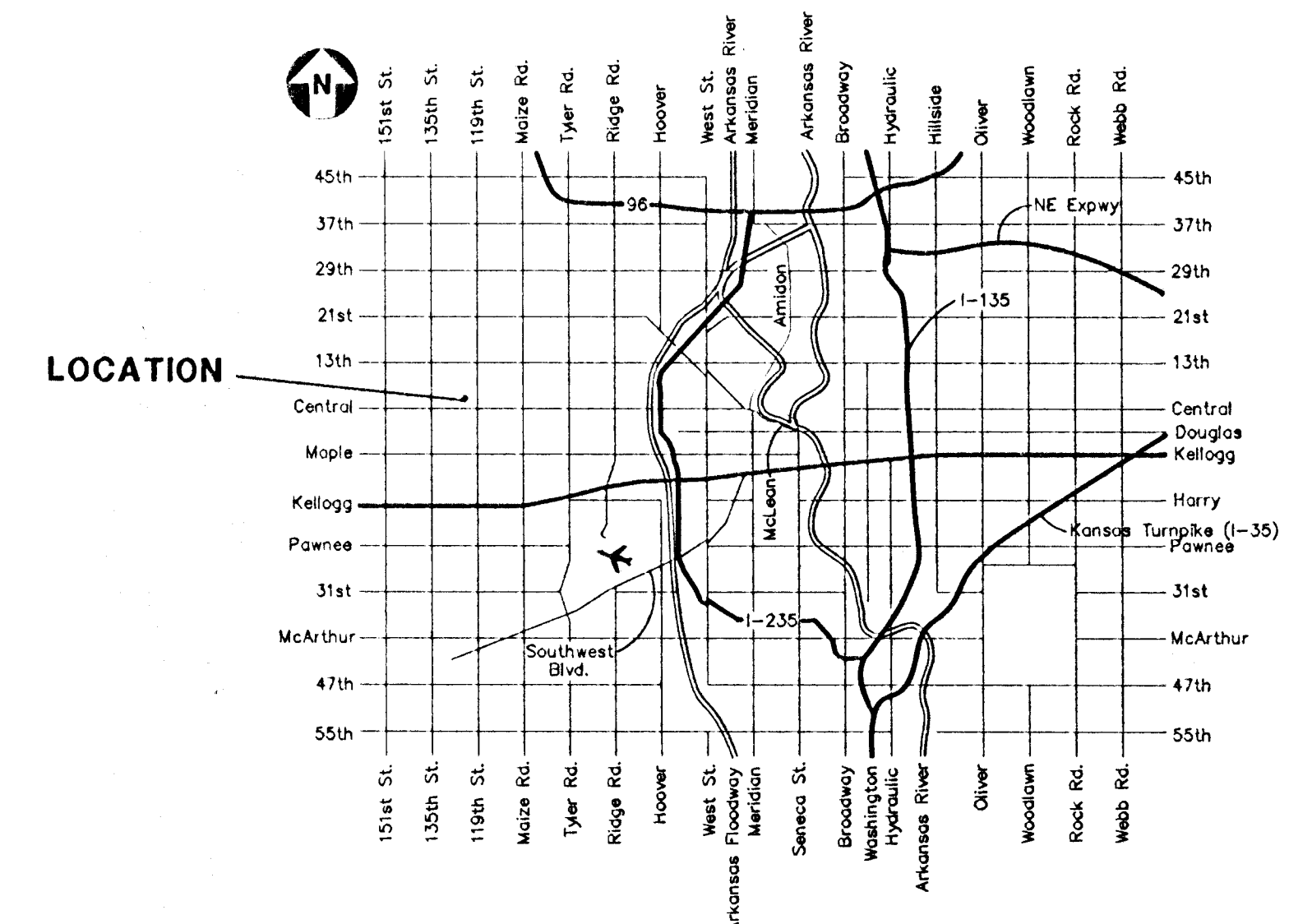
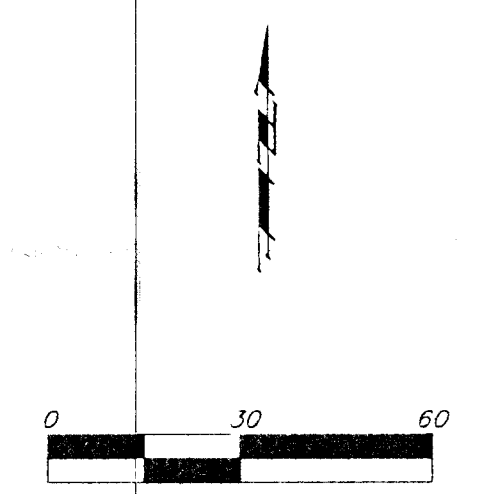
LEGEND

- = #4 Baughman Rebar (Set)
- = #4 Baughman Rebar (Found)

OWNER:
 KELLEY INVESTMENT INC.
 4770 W. 135th St.
 216 N. 10th Street West
 Suite 221
 Wichita, KS 67227

LEGAL DESCRIPTION:
 A PART OF THE SE 1/4 OF SECTION 4, T13N, R15W, S15E, OF THE 12TH MERIDIAN, SEDGWICK COUNTY, KANSAS, AS SHOWN AS THE WEST 270 FEET OF THE EAST 1/2 OF THE NE 1/4 OF SECTION 4, T13N, R15W, S15E, OF THE 12TH MERIDIAN, SEDGWICK COUNTY, KANSAS.

BENCHMARK:
 A BENCH MARK BENCHMARK (BM) IS SET AT THE INTERSECTION OF THE EAST 1/2 OF THE NE 1/4 OF SECTION 4, T13N, R15W, S15E, OF THE 12TH MERIDIAN, SEDGWICK COUNTY, KANSAS, AND THE WEST 270 FEET OF THE EAST 1/2 OF THE NE 1/4 OF SECTION 4, T13N, R15W, S15E, OF THE 12TH MERIDIAN, SEDGWICK COUNTY, KANSAS.



VICINITY MAP