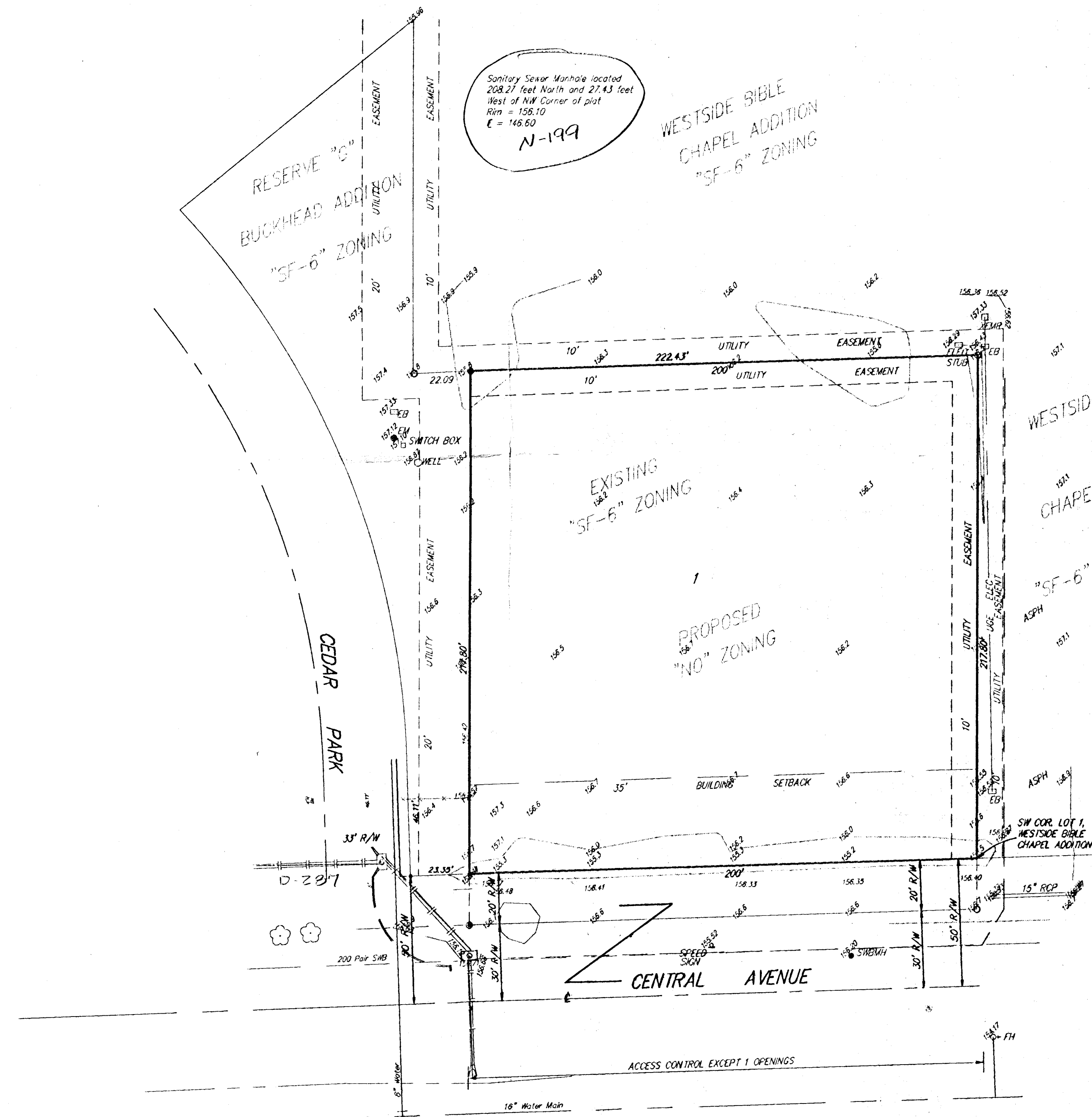


SKETCH PLAT
DEERGLEN OFFICE PARK ADDITION
SEDGWICK COUNTY, KANSAS

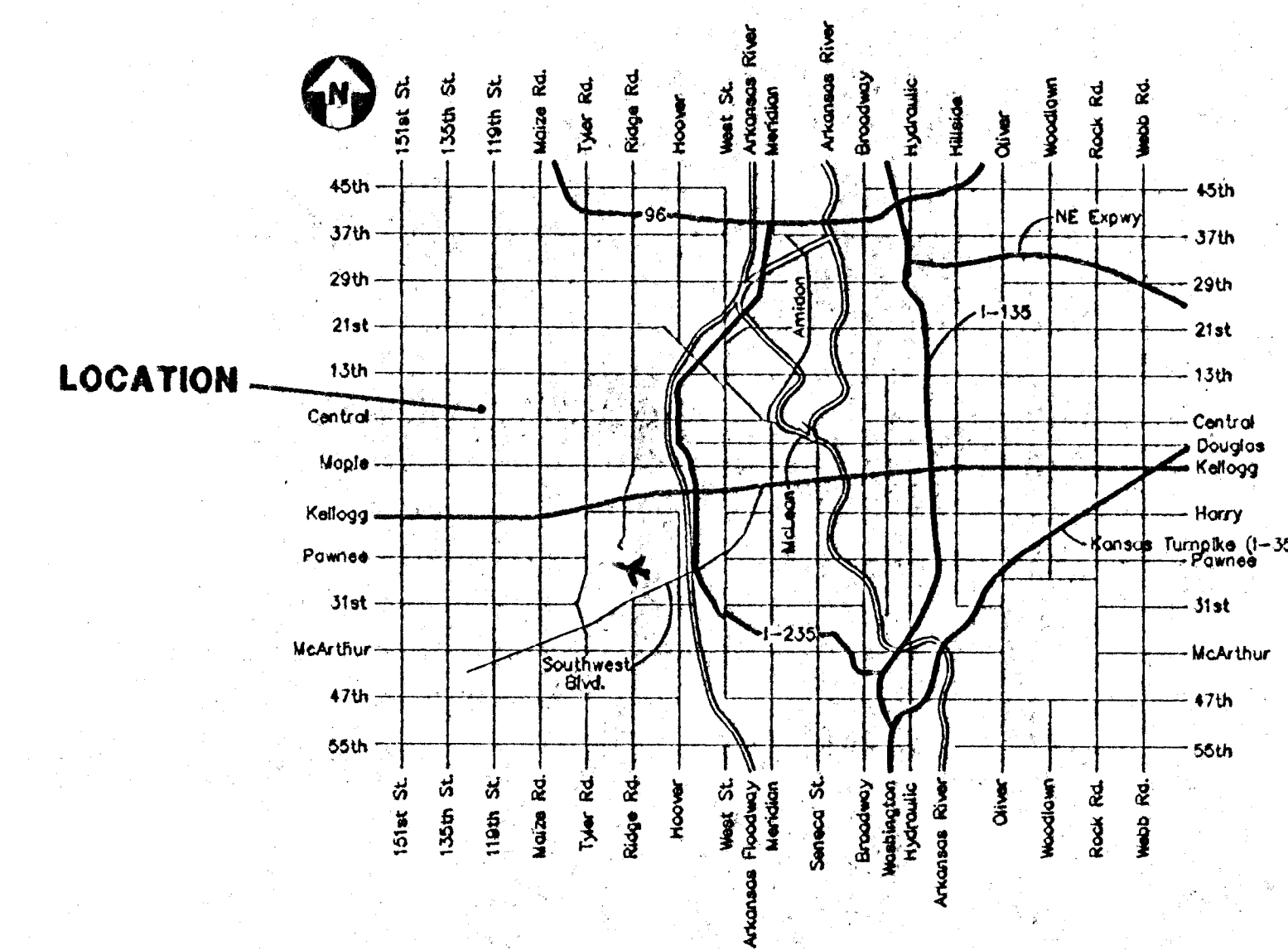


- LEGEND**
- = #4 Baughman Rebar (Set)
 - = #4 Baughman Rebar (Found)
 - DI = Drop Inlet
 - EB = Electric Box
 - EM = Electric Meter
 - FH = Fire Hydrant
 - LP = Light Pole
 - Sign = Sign
 - SSM = Southwestern Bell Manhole
 - SWB = Switch Box
 - Well = Cased Well
 - TR = Transformer

OWNER:
 KELSEY DEVELOPMENT, INC.
 ATTN: PAUL KELSEY
 716 N. 119TH STREET WEST
 SUITE 223
 MOHAWK, KS 67212

LEGAL DESCRIPTION:
 A TRACT IN THE SOUTHEAST QUARTER OF SECTION 13, TOWNSHIP 27, RANGE 2 WEST OF THE 6TH P.M., SEDGWICK COUNTY, KANSAS, DESCRIBED AS THE WEST 200 FEET OF THE EAST 600 FEET OF THE SOUTH 217.8 FEET OF SAID SOUTHEAST QUARTER.

BENCHMARK:
 CITY OF MOHAWK BENCHMARK SOUTHEAST CORNER INTERSECTION, 40 FEET EAST AND 48 FEET SOUTH OF CENTER LINE SOUTH 58.92 FEET 'S' CORNER FROM 21.7 FEET WEST OF FACE WALK 14.5, 13.8 FEET NORTH OF WALK E/M. ELEVATION = 158.93 CITY DATUM



VICINITY MAP