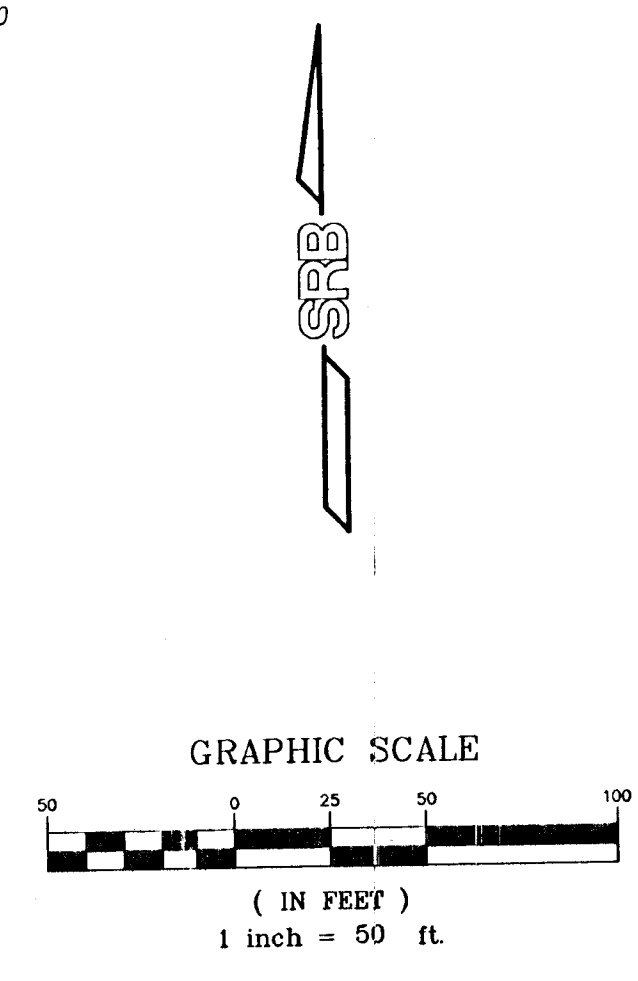
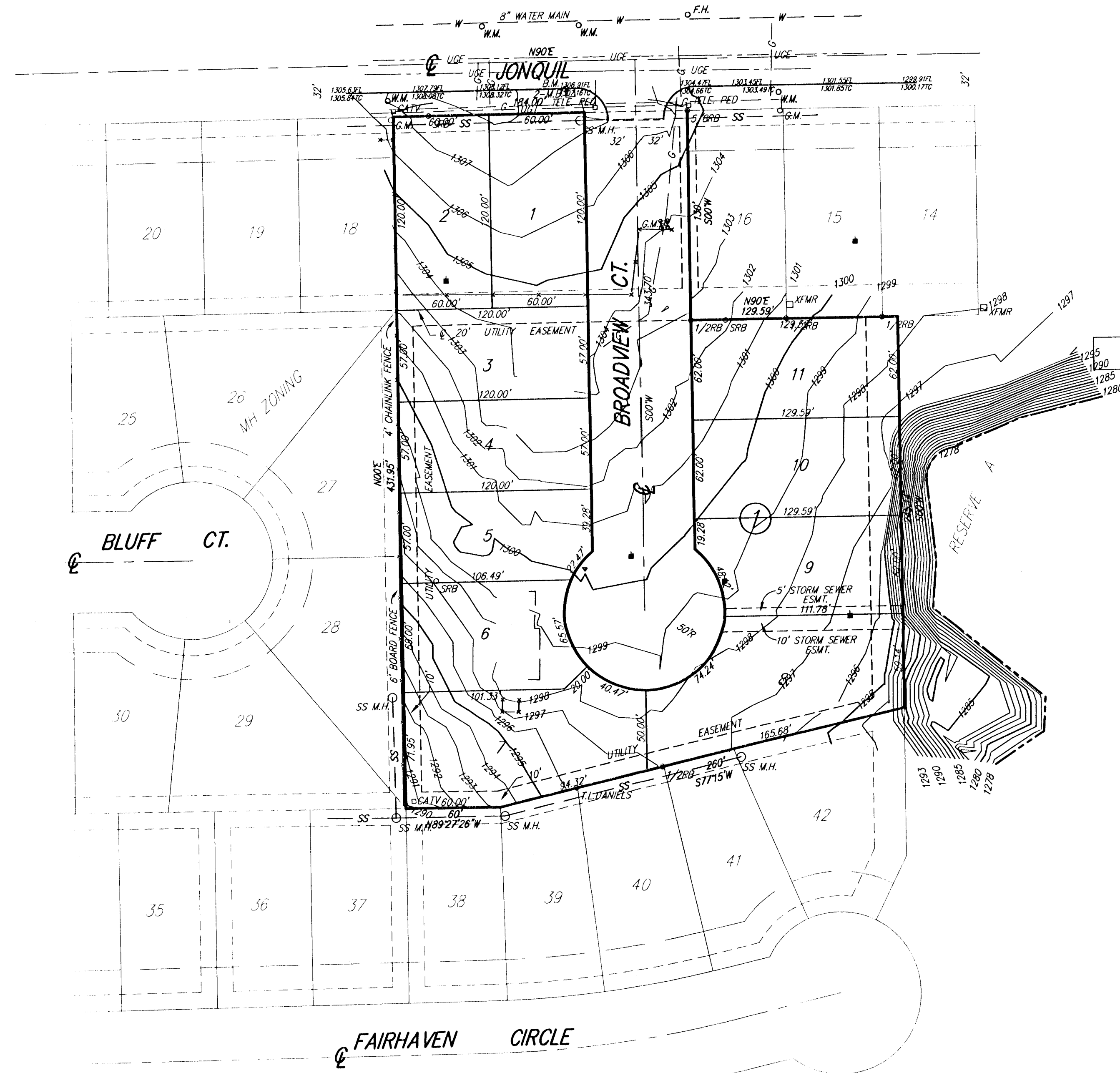


# PRELIMINARY PLAT DEER LAKE ESTATES 2ND ADDITION

SEDGWICK COUNTY, KANSAS



REFERENCE BENCH MARK: CITY OF WICHITA B.M.  
225' ± W. OF CLIFTON ON S. SIDE 47TH ST. S.  
ON CONCRETE BASE OF SCHOOL CROSSING SIGNAL  
ELEV.=1263.78 NGVD

ON SITE B.M.: "□" CUT ON TOP OF CURB @  
N.W. CURB RETURN OF DRIVE ENTRANCE AT W. EDGE  
OF CONCRETE BASE OF MAIL BOXES  
76' ± W. & 15' ± N. OF N.E. CORNER OF SUBJECT PROPERTY.  
ELEV.=1307.38 NGVD

**LEGAL DESCRIPTION:**

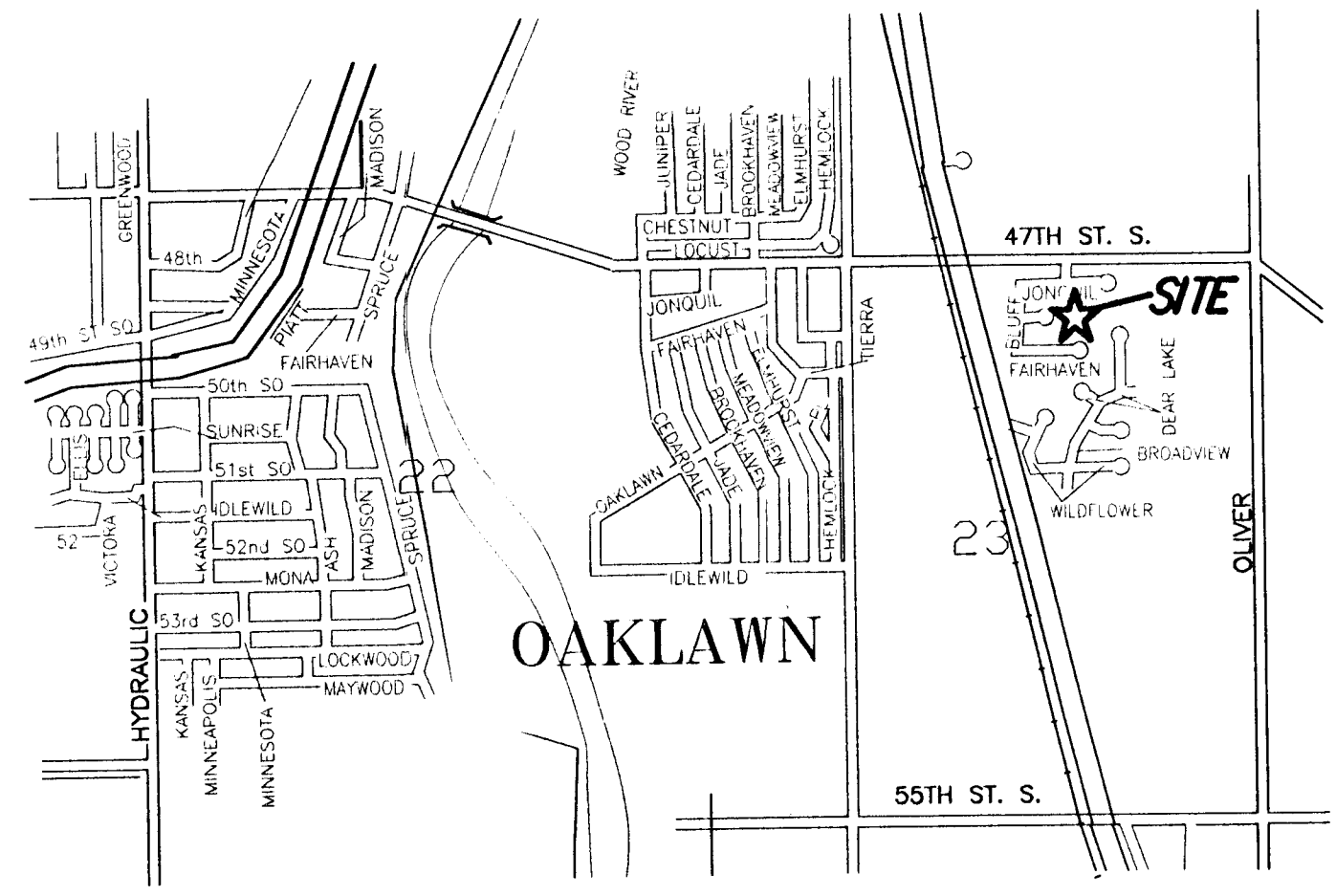
Lot 17, Block 1, Deer Lake Estates, an Addition to Sedgwick County, Kansas.

Martin Real-Estate L.L.C.  
132 Lochinvar  
Wichita, Ks. 67207  
Ph. 686-4617

GROSS SIZE:  
111,494.06 Sq. Ft. ±  
2.56 Acres ±

NET SIZE:  
90,605.73 Sq. Ft. ±  
2.08 Acres ±

MINIMUM LOT SIZE:  
6,800 Sq. Ft. ±



VICINITY MAP