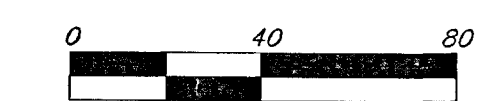
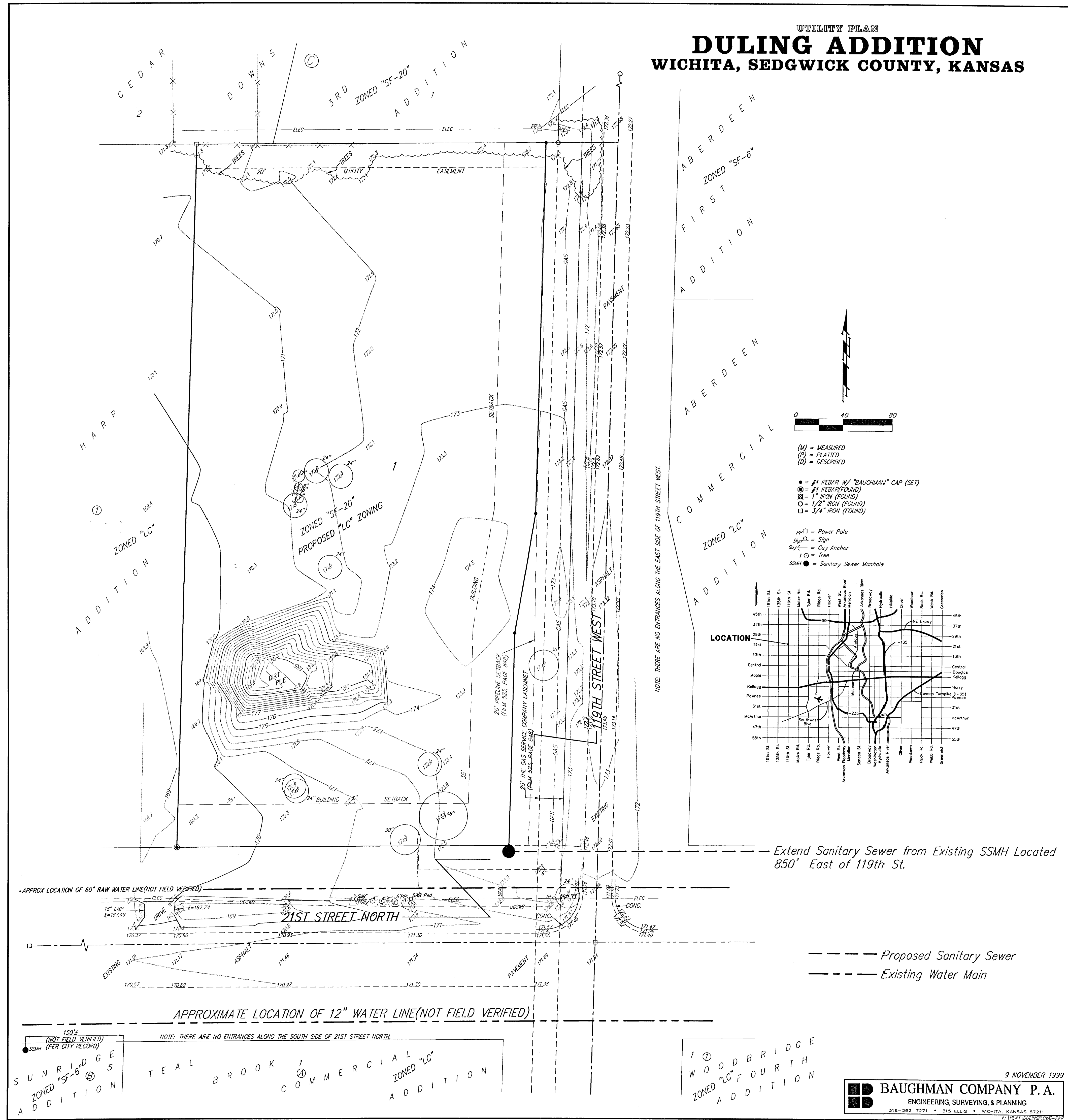
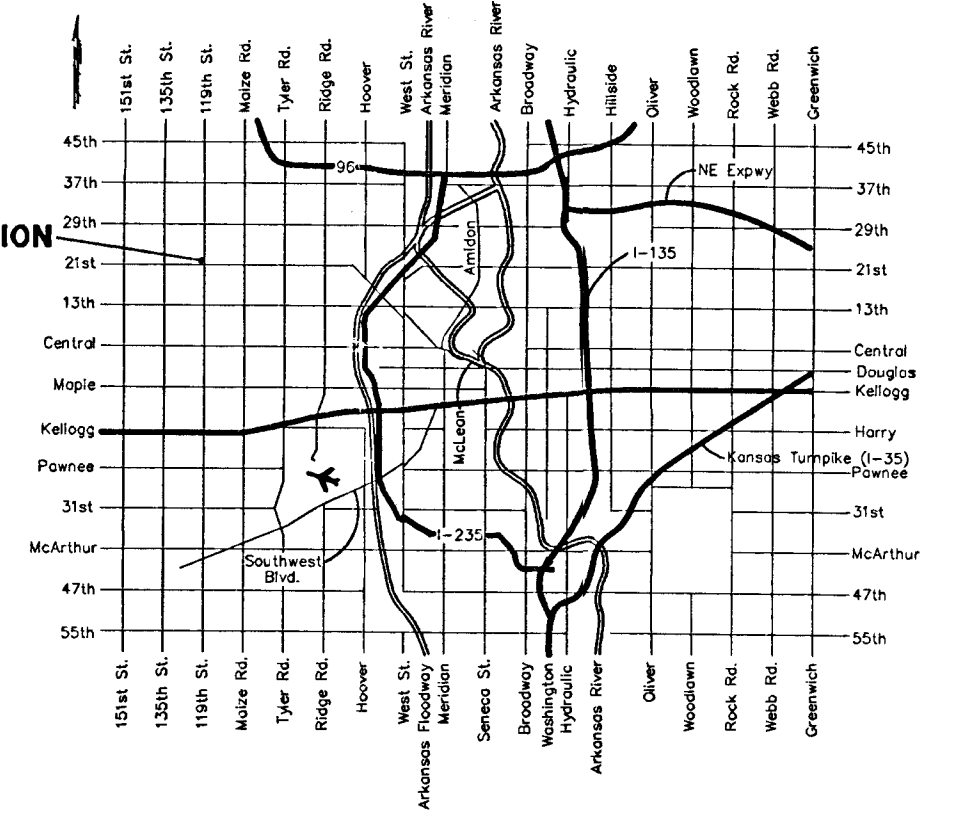


UTILITY PLAN
DULING ADDITION
 WICHITA, SEDGWICK COUNTY, KANSAS



- (M) = MEASURED
- (P) = PLATTED
- (D) = DESCRIBED
- = #4 REBAR W/ "BAUGHMAN" CAP (SET)
- ⊙ = #4 REBAR (FOUND)
- ⊗ = 1" IRON (FOUND)
- = 1/2" IRON (FOUND)
- = 3/4" IRON (FOUND)
- ppd = Power Pole
- sq = Sign
- ayc = Guy Anchor
- 1 Co = 1" IRON
- SSMH = Sanitary Sewer Manhole

LOCATION



Extend Sanitary Sewer from Existing SSMH Located 850' East of 119th St.

--- Proposed Sanitary Sewer
 --- Existing Water Main

NOTE: THERE ARE NO ENTRANCES ALONG THE SOUTH SIDE OF 21ST STREET NORTH.

1997 (NOT FIELD VERIFIED) SSMH (PER CITY RECORD)

SUNRIIDGE ZONED "SF-6" ADDITION

TEAL BROOK COMMERCIAL ZONED "LC" ADDITION

WOODBRIDGE ZONED "LC" FOURTH ADDITION