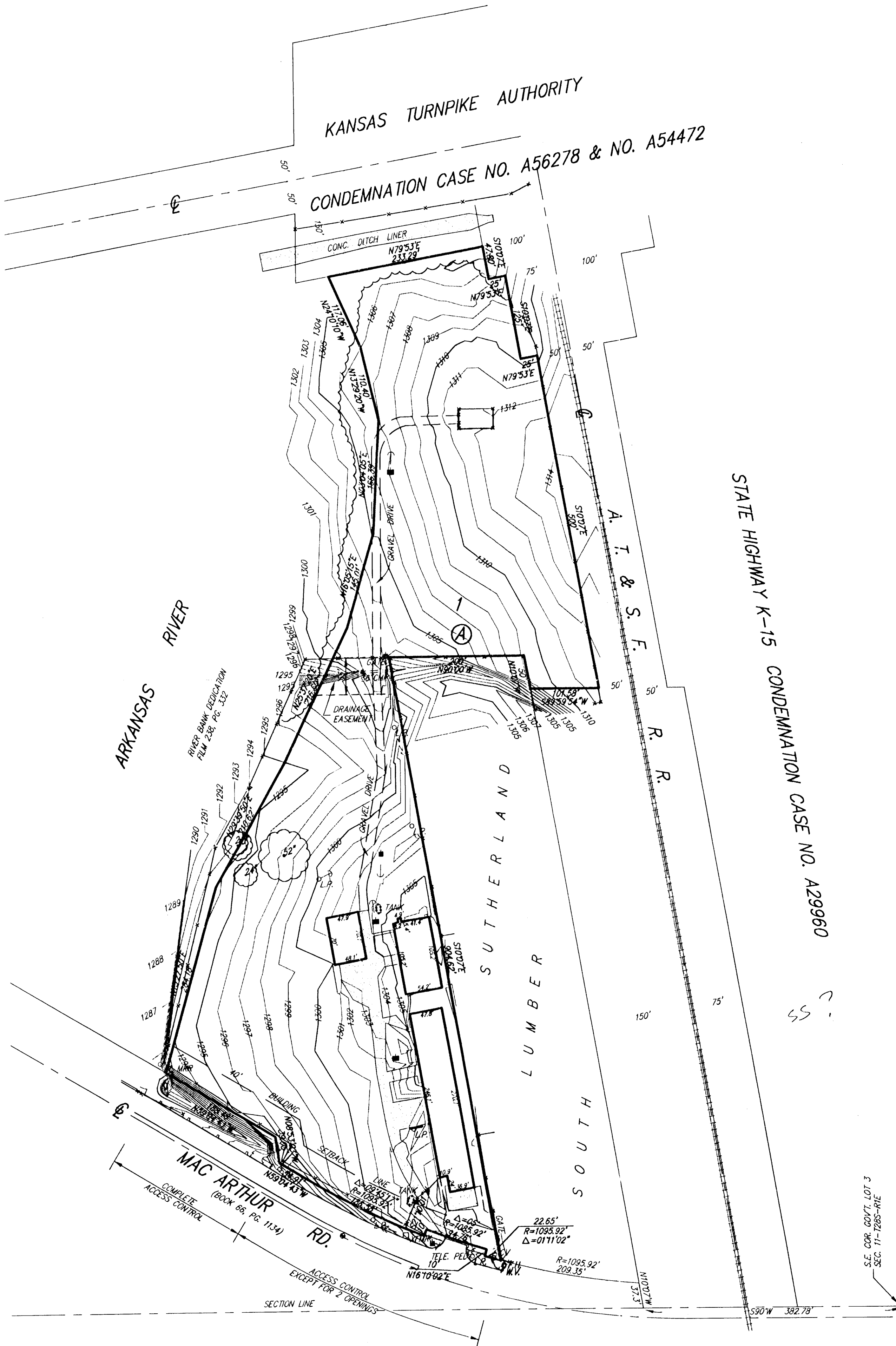


# PRELIMINARY PLAT DUNNEGAN INDUSTRIAL ADDITION

SEDGWICK COUNTY, KANSAS

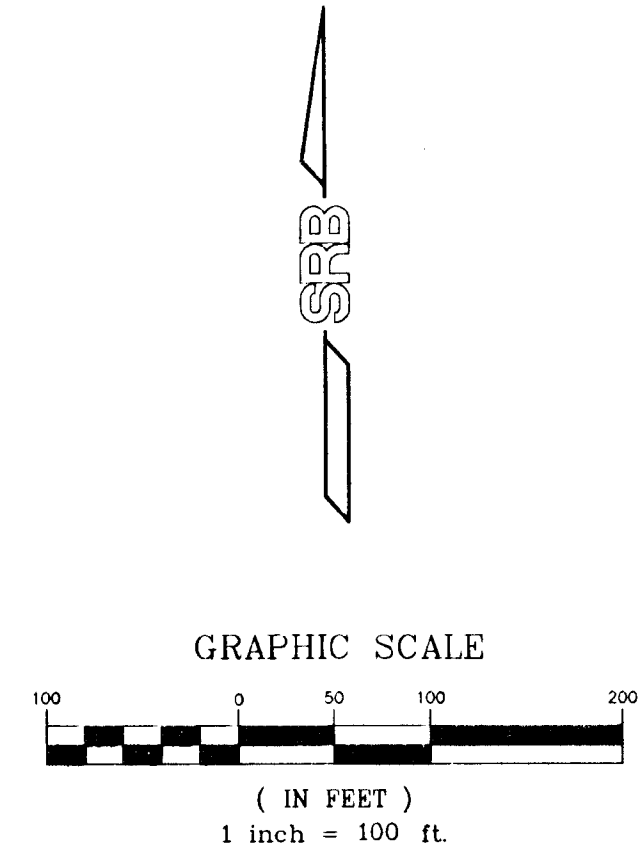


**DESCRIPTION:**  
All that part of Government Lots 2 and 3 in Sec. 11, Twp. 28-S, R-1-E of the 6th P.M., Sedgwick County, Kansas, lying south of the south line of the Kansas Turnpike, east of the east line of the Arkansas River as established on Film 238, at Page 332 and west of the west line of the Atchinson, Topeka & Santa Fe railroad right-of-way and north of the north line of Mac Arthur Road as established on Film 227, at Page 354, except that part platted as Sutherland Lumber South an Addition to Sedgwick County, Kansas.

Gerald L. Dunnegan  
3330 E. Mac Auther Rd.  
Wichita, Kansas 67216  
Ph. 686-1903

**GROSS AREA:**  
439,716.60 Sq. Ft. ±  
10.09 Acres

**MINIMUM LOT SIZE:**  
439,716.60 Sq. Ft. ±  
10.09 Acres



**BENCH MARK:**  
CITY OF WICHITA STD. DISC  
S.W. COR. N. BRIDGE OVER ARKANSAS RIVER,  
BETWEEN K-15 AND TURNPIKE, ON WING WALL  
4.0' N. OF CENTERLINE MAC ARTHUR RD.  
ELEV.=1281.92 N.G.V.D.