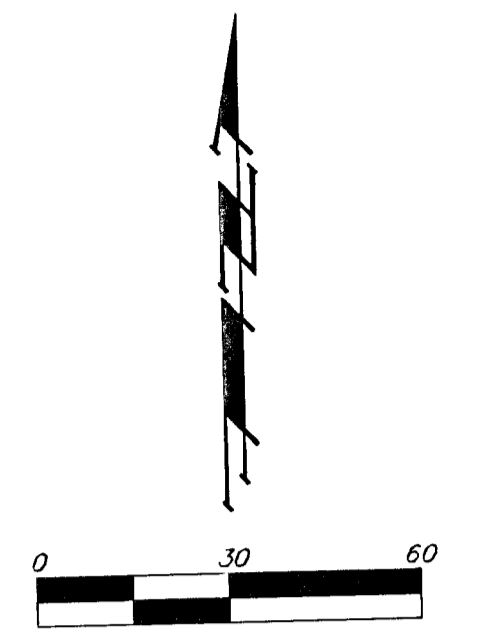


# GRADING AND DRAINAGE PLAN

## EASY CREDIT AUTO SALES ADDITION

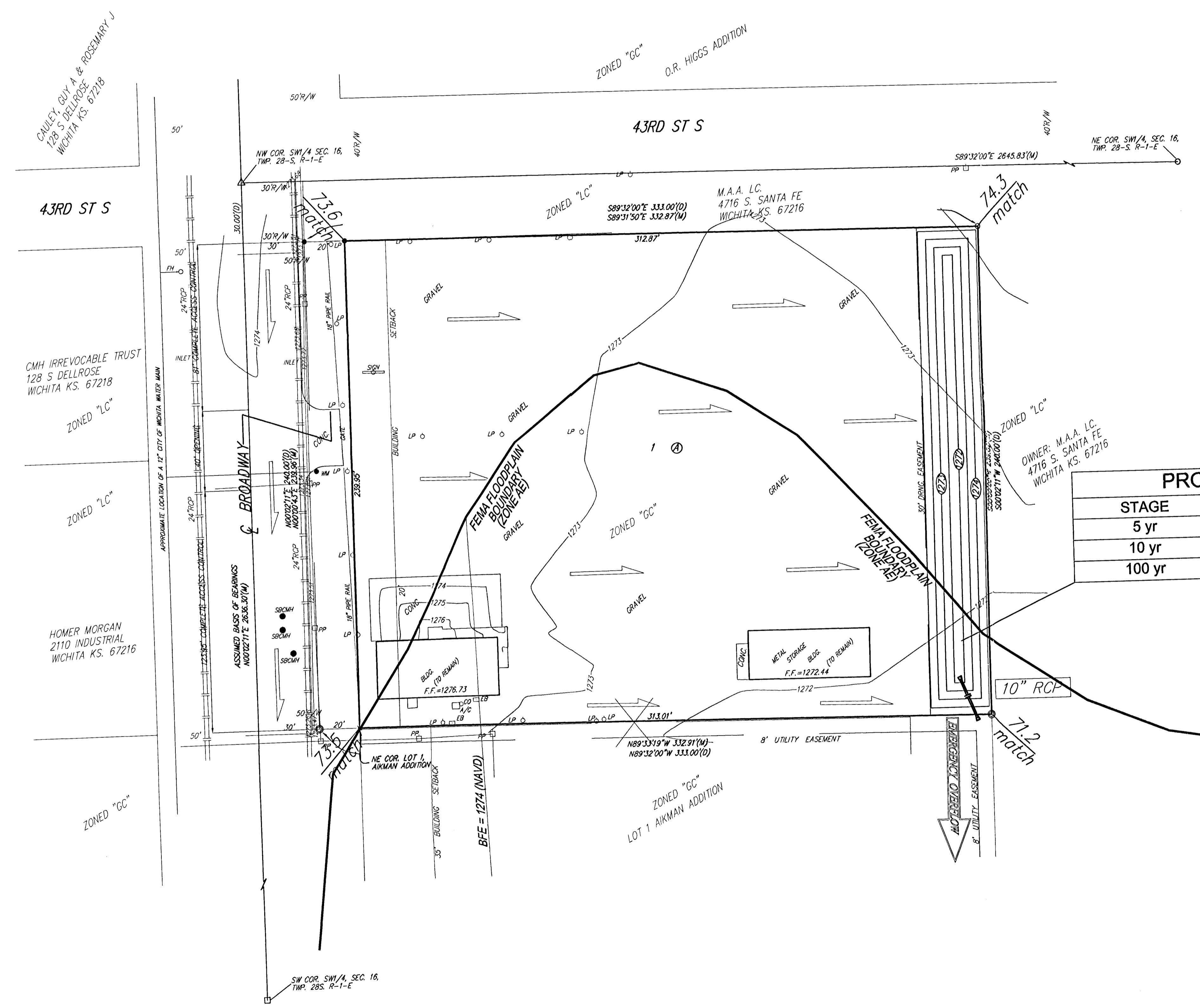
### WICHITA, SEDGWICK COUNTY, KANSAS



DATE OF PREPARATION: 7 MAY 2007  
 DATE OF TOPOGRAPHY: 25 MAY 2007  
 CONTOUR INTERVALS = 1 FOOT

OWNER:  
 EASY CREDIT AUTO SALES, INC  
 333 S EMPORIA  
 WICHITA, KS 67202  
 393-1360

BENCHMARK:  
 "□" CUT TOP CURB, SW CORNER OF  
 44TH ST S & BROADWAY  
 ELEV. = 1272.93 NGVD29

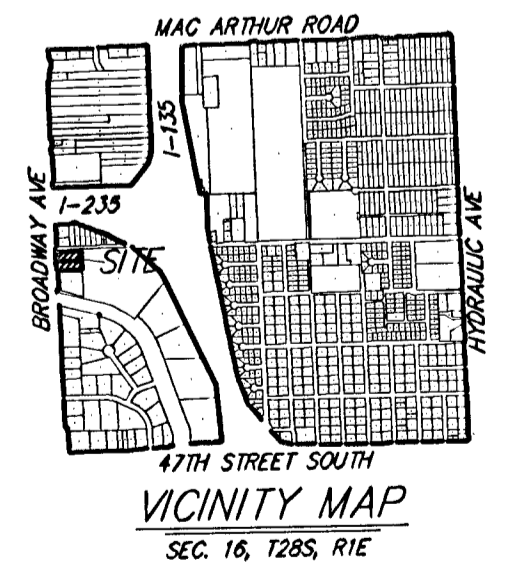


STAGE	INFLOW	OUTFLOW	ELEVATION
5 yr	3.1 cfs	2.5 cfs	1273.6
10 yr	3.6 cfs	2.7 cfs	1273.7
100 yr	5.4 cfs	3.6 cfs	1274.5

ELEVATION	AREA (acres)
1272	0.02
1273	0.07
1274	0.11
1275	0.16

LOT	BLOCK	ELEVATION
		NGVD29
1	A	1276.6

Area = 1.72 acres	
Soil Type = C	
T <sub>c</sub> = 15 min	
EXISTING CONDITIONS	DEVELOPED CONDITIONS
CN = 89	CN = 98
Q <sub>2</sub> = 1.4 cfs	Q <sub>2</sub> = 2.4 cfs
Q <sub>5</sub> = 2.0 cfs	Q <sub>5</sub> = 3.1 cfs
Q <sub>10</sub> = 2.3 cfs	Q <sub>10</sub> = 3.6 cfs
Q <sub>100</sub> = 3.7 cfs	Q <sub>100</sub> = 5.4 cfs



NOTE:  
 FEMA FLOODPLAIN BOUNDARIES ARE SCALED PER LOCATION PER FEMA MAP 20173C0505E FOR COMMUNITY OF CITY OF WICHITA, COMMUNITY #200.328, EFFECTIVE DATE FEBRUARY 2, 2007.

NOTE:  
 A KANSAS DIVISION OF WATER RESOURCES (DWR) FLOODPLAIN FILL PERMIT WILL BE REQUIRED BEFORE ANY GRADE CHANGES OCCUR WITHIN THE 100-YR FLOODPLAIN.

**DRAINAGE & GRADING PLAN**  
**EASY CREDIT AUTO SALES ADDITION**



688 8976