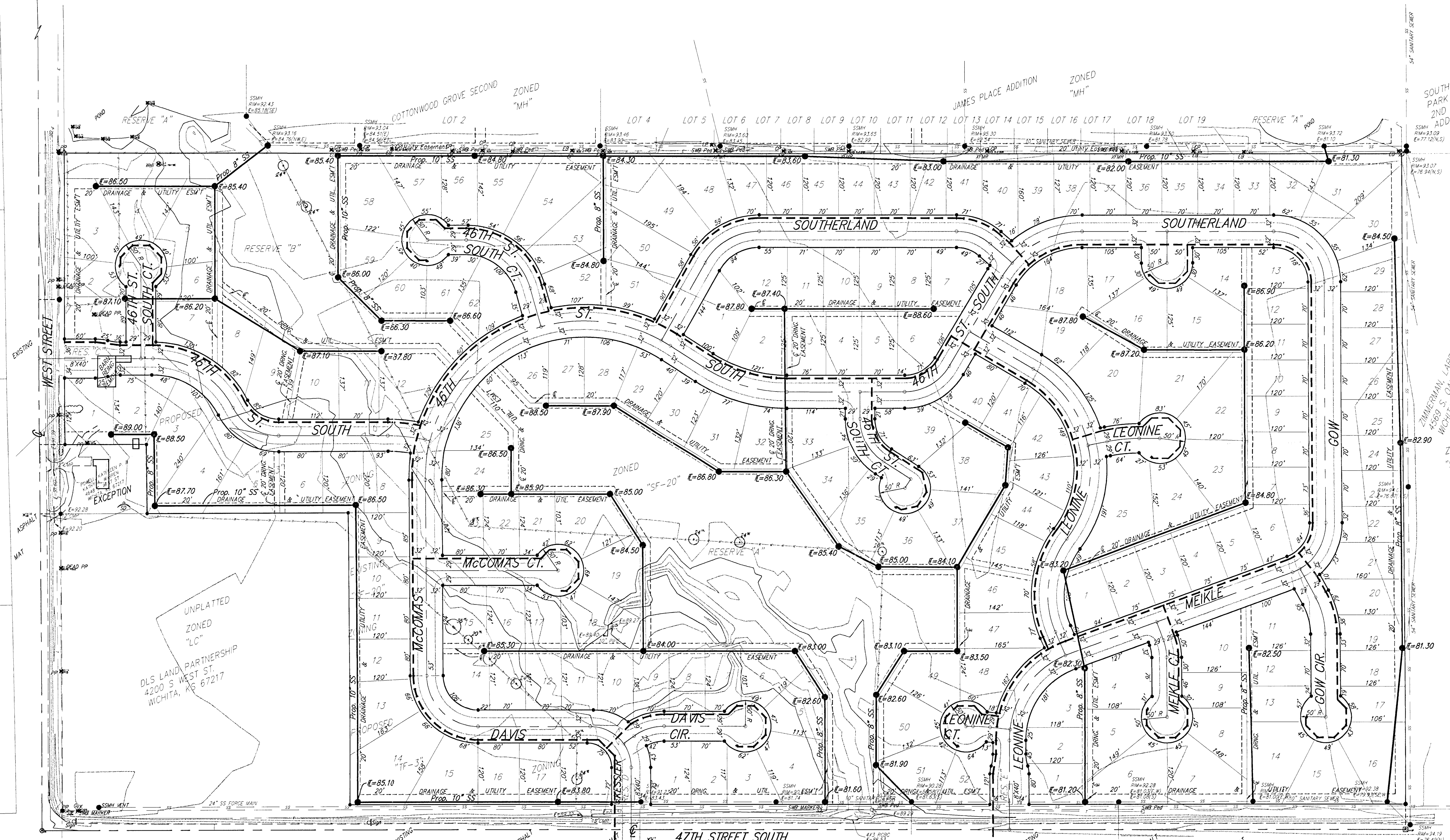


UTILITY PLAN

ECK 7TH ADDITION

WICHITA, SEDGWICK COUNTY, KANSAS

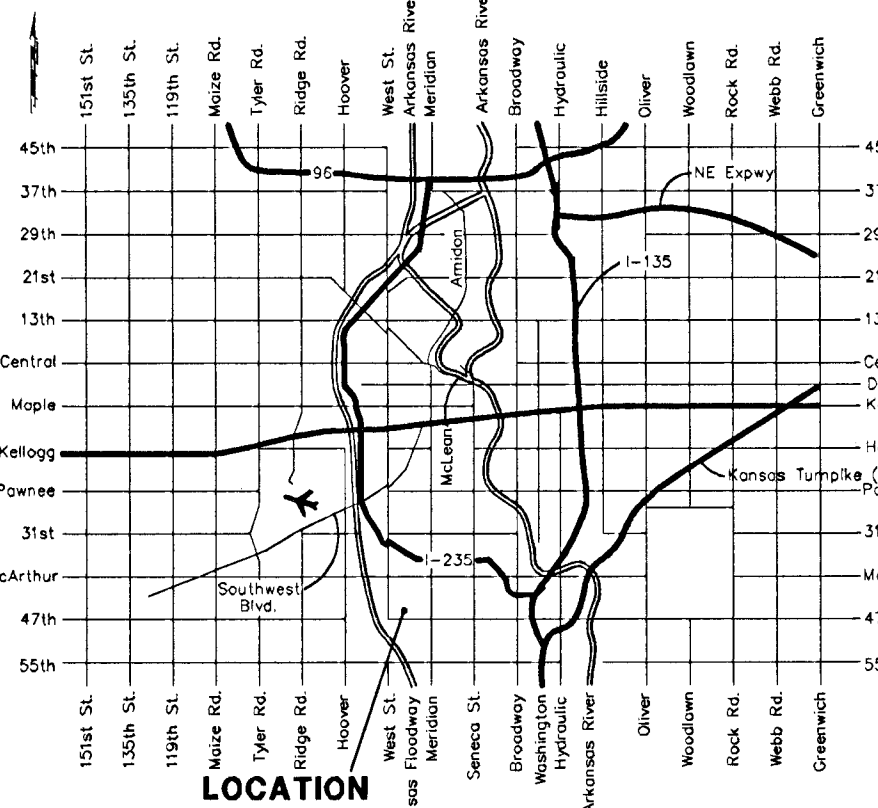
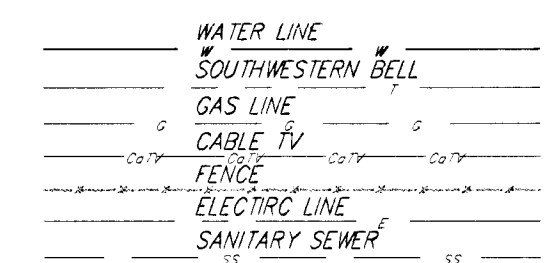
Scale 1" = 100'



RESERVES "A" AND "B" ARE RESERVED FOR OPEN SPACE, LANDSCAPING, BERMS, SIDEWALKS, DRAINAGE PURPOSES, AND UTILITIES AS CONFINED TO EASEMENTS.

RESERVES "C", "D" AND "E" ARE RESERVED FOR ENTRY MONUMENTS, STREETS, OPEN SPACE, LANDSCAPING, AND BERMS.

- = #4 Baughman Rebar Set
- = #4 Rebar in Thimble Found
- = 3/4" Iron Pipe in Thimble Found
- △ = #4 Mid Kansas Rebar Found
- = Mid Kansas 3/4" Iron Pipe Found
- OP = Cable TV Pedestal
- EB = Electric Box
- GA = Guy Anchor
- LP = Light Pole
- PP = Power Pole
- SD = Satellite Dish
- Sign = Sign
- SSMH = Sanitary Sewer Manhole
- T = Tree
- TR = Transformer
- SWB Ped = Southwestern Bell Pedestal



RENOLLET, SHIRLEY D.
3245 W. 47TH ST. S.
WICHITA, KS 67217

RENOLLET, SHIRLEY D.
3245 W. 47TH ST. S.
WICHITA, KS 67217

3RD ADDITION TO
CHITWOOD ESTATES

ZONED "SF-20"

ZONED "SF-20"
SPRINGS, FRED J. ETUX
3/8 MARK W. & KELLY J. SPRINGS
6601 W. 35TH ST. S.
WICHITA, KS 67215

VERSAR ADDITION

RENOLLET, CLINTON A.
3245 W. 47TH ST. S.
WICHITA, KS 67217

ZONED "SF-20"
WAHL, GLADYS WAHL
3/8 KENDALL WAHL
3201 W. 47TH S.
WICHITA, KS 67217