

PRELIMINARY PLAT
ECK 7TH ADDITION
 WICHITA, SEDGWICK COUNTY, KANSAS

DEVELOPER:
 CAYWOOD, LLC
 ATTN: MATT ECK
 5512 W. CENTRAL
 WICHITA, KS 67212
 PH. (316) 942-7402

LEGAL DESCRIPTION:
 THE S 1/2 OF THE SW 1/4, SEC. 13, TWP. 28-S, R-1-W OF THE 6TH P.M., EXCEPT THE SOUTH 619.00 FEET OF THE WEST 600.00' AND EXCEPT THE WEST 168.71' OF THE FEET NORTH 135.00 FEET OF THE SOUTH 754.00 FEET THERE OF.

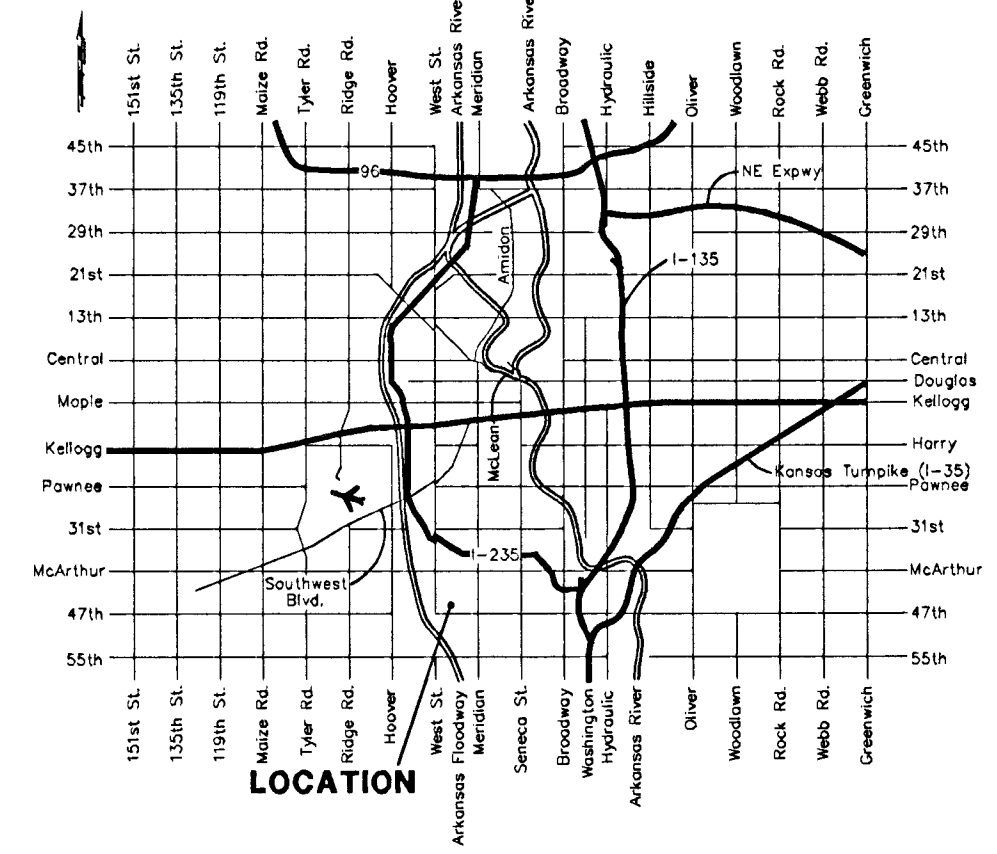
BENCHMARK:
 "CUT 56.7" SE OF THE SE COR OF THE SW 1/4, TO THE NE CORNER CONCRETE LIFT STATION PAD. ELEV.=91.85 CITY DATUM

RESERVES "A" AND "B" ARE RESERVED FOR OPEN SPACE, LANDSCAPING, BERMS, SIDEWALKS, DRAINAGE PURPOSES, AND UTILITIES AS CONFIRMED TO EASEMENTS.
 RESERVES "C", "D" AND "E" ARE RESERVED FOR ENTRY MONUMENTS, STREETS, OPEN SPACE, LANDSCAPING, AND BERMS.

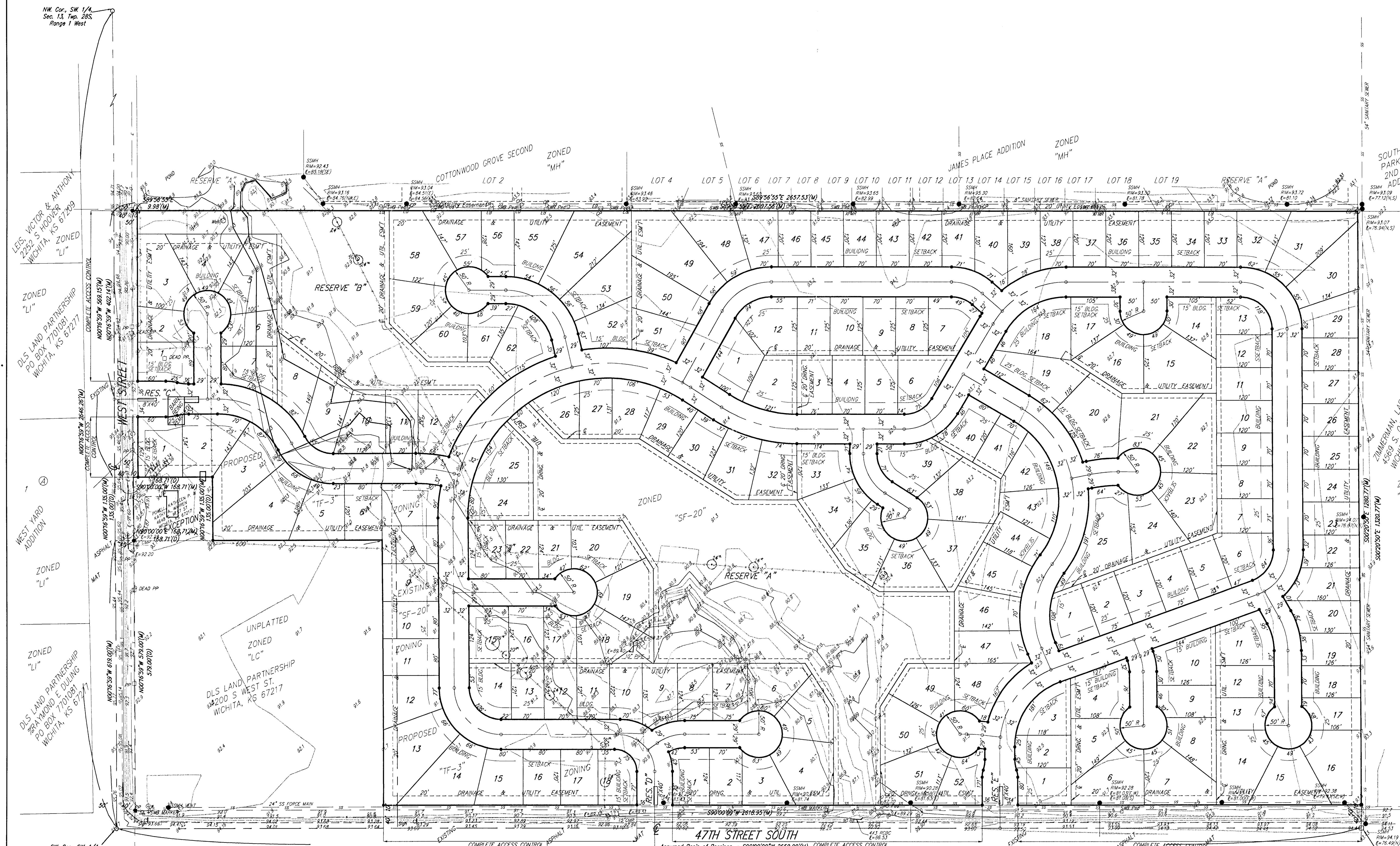
- = #4 Baughman Rebar Set
- = #4 Rebar in Thimble Found
- = 3/4" Iron Pipe in Thimble Found
- △ = #4 Mid Kansas Rebar Found
- ⊙ = Mid Kansas 3/4" Iron Pipe Found

- GP ⊙ = Cable TV Pedestal
- EB ⊙ = Electric Box
- GA ⊙ = Guy Anchor
- LP ⊙ = Light Pole
- PP ⊙ = Power Pole
- SD ⊙ = Satellite Dish
- SP ⊙ = Sign
- SSMH ⊙ = Sanitary Sewer Manhole
- T ⊙ = Tree
- TRM ⊙ = Transformer
- SWB Ped ⊙ = Southwestern Bell Pedestal

- WATER LINE
- SOUTHWESTERN BELL
- GAS LINE
- CABLE TV
- FENCE
- ELECTRIC LINE
- SANITARY SEWER



APPROXIMATE LOCATION OF 12" WATER LINE



RENOLLET, SHIRLEY D.
 3245 W. 47TH ST. S.
 WICHITA, KS 67217

RENOLLET, SHIRLEY D.
 3245 W. 47TH ST. S.
 WICHITA, KS 67217

3RD ADDITION TO CHITWOOD ESTATES

2ND ADDITION TO CHITWOOD ESTATES

ZONED "SF-20" TO 2 CHITWOOD ESTATES

ZONED "SF-20" SPRINGS, FRED J. ETUX & MARK W. & KELLY J. SPRINGS 6601 W. 35TH ST. S. WICHITA, KS 67215

ZONED "SF-20" ARCHER, JOHN CALVIN 3305 W. 47TH S. WICHITA, KS 67217

ZONED "SF-20" RENOLLET, CLUNTON A. 3245 W. 47TH ST. S. WICHITA, KS 67217

ZONED "SF-20" WAHL, GLADYS WAHL & KENDALL WAHL 3201 W. 47TH S. WICHITA, KS 67217