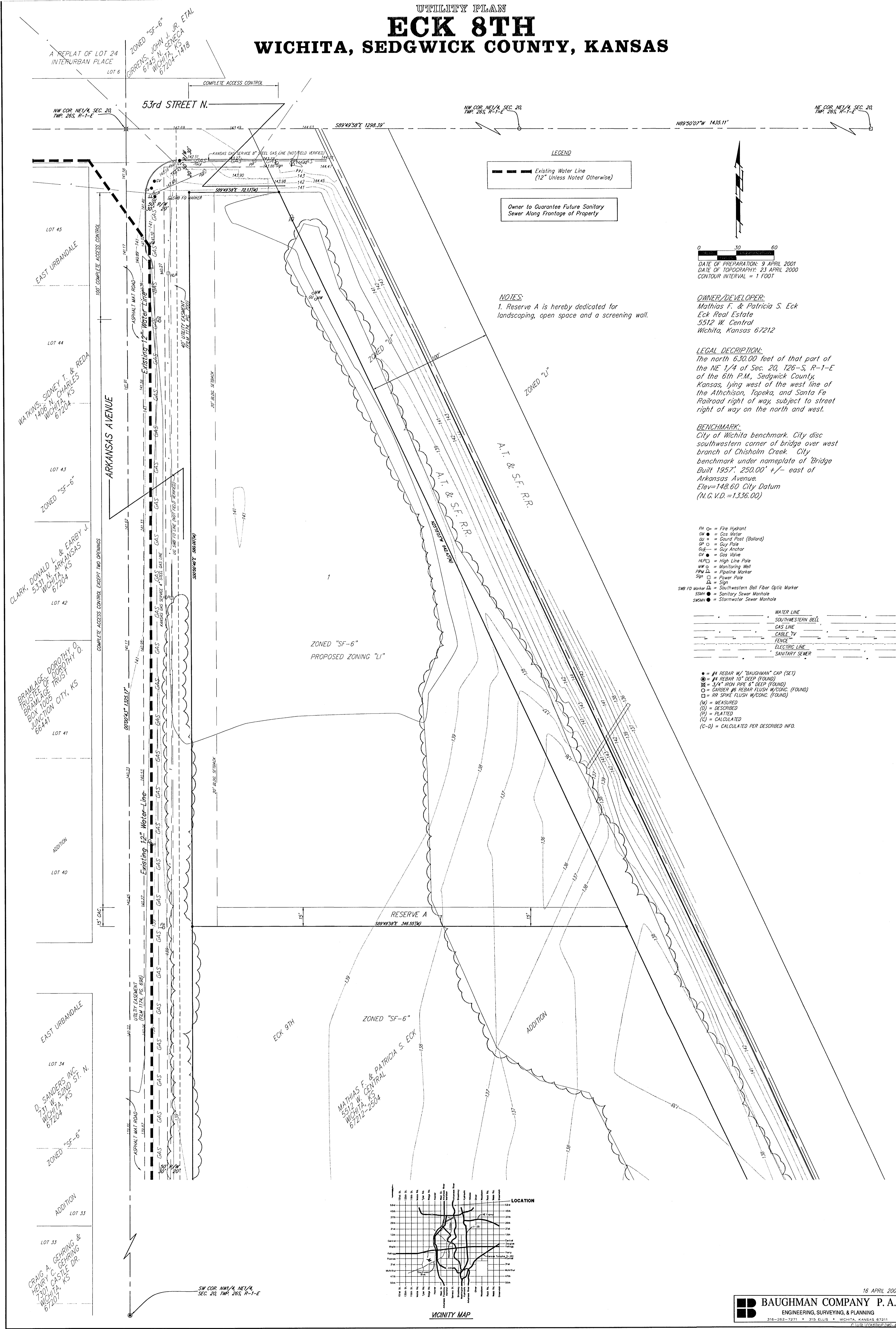


UTILITY PLAN ECK 8TH WICHITA, SEDGWICK COUNTY, KANSAS



LEGEND

--- Existing Water Line (12" Unless Noted Otherwise)

Owner to Guarantee Future Sanitary Sewer Along Frontage of Property

DATE OF PREPARATION: 9 APRIL 2001
 DATE OF TOPOGRAPHY: 23 APRIL 2000
 CONTOUR INTERVAL: 1 FOOT

OWNER/DEVELOPER:
 Mathias F. & Patricia S. Eck
 Eck Real Estate
 5512 W. Central
 Wichita, Kansas 67212

LEGAL DESCRIPTION:
 The north 630.00 feet of that part of the NE 1/4 of Sec. 20, T26-S, R-1-E of the 6th P.M., Sedgwick County, Kansas, lying west of the west line of the Atchison, Topeka, and Santa Fe Railroad right of way, subject to street right of way on the north and west.

BENCHMARK:
 City of Wichita benchmark. City disc southwestern corner of bridge over west branch of Chishalm Creek. City benchmark under nameplate of Bridge Built 1957, 250.00' +/- east of Arkansas Avenue. Elev=148.60 City Datum (N.G.V.D.=1336.00)

- PH = Fire Hydrant
- GM = Gas Meter
- GR = Gas Regulator (Ballast)
- GP = Gas Pole
- GR = Gas Anchor
- GV = Gas Valve
- HLPO = High Line Pole
- MM = Manhole
- PM = Pipeline Marker
- SP = Power Pole
- SS = Sanitary Sewer
- SW = Stormwater
- SWB = Southwestern Bell Fiber Optic Marker
- SMH = Sanitary Sewer Manhole
- SSMH = Stormwater Sewer Manhole

- WATER LINE
- SOUTHWESTERN BELL
- GAS LINE
- CABLE TV
- FENCE
- ELECTRIC LINE
- SANITARY SEWER

- = #1 REBAR W/ "BAUGHMAN" CAP (SET)
- ⊗ = #1 REBAR 10" DEEP (FOUND)
- ⊗ = 3/4" IRON PIPE 6" DEEP (FOUND)
- ⊗ = GARBAGE #8 REBAR FLUSH W/WDG. (FOUND)
- ⊗ = IRP SPIKE FLUSH W/WDG. (FOUND)
- (M) = MEASURED
- (D) = DESCRIBED
- (P) = PLATED
- (C) = CALCULATED
- (C-D) = CALCULATED PER DESCRIBED INFO.

NOTES:
 1. Reserve A is hereby dedicated for landscaping, open space and a screening wall.

