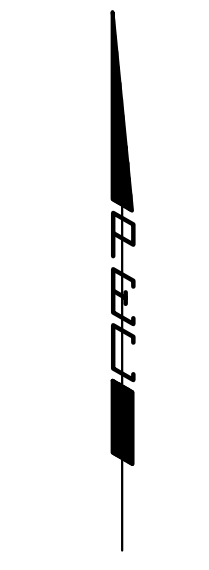
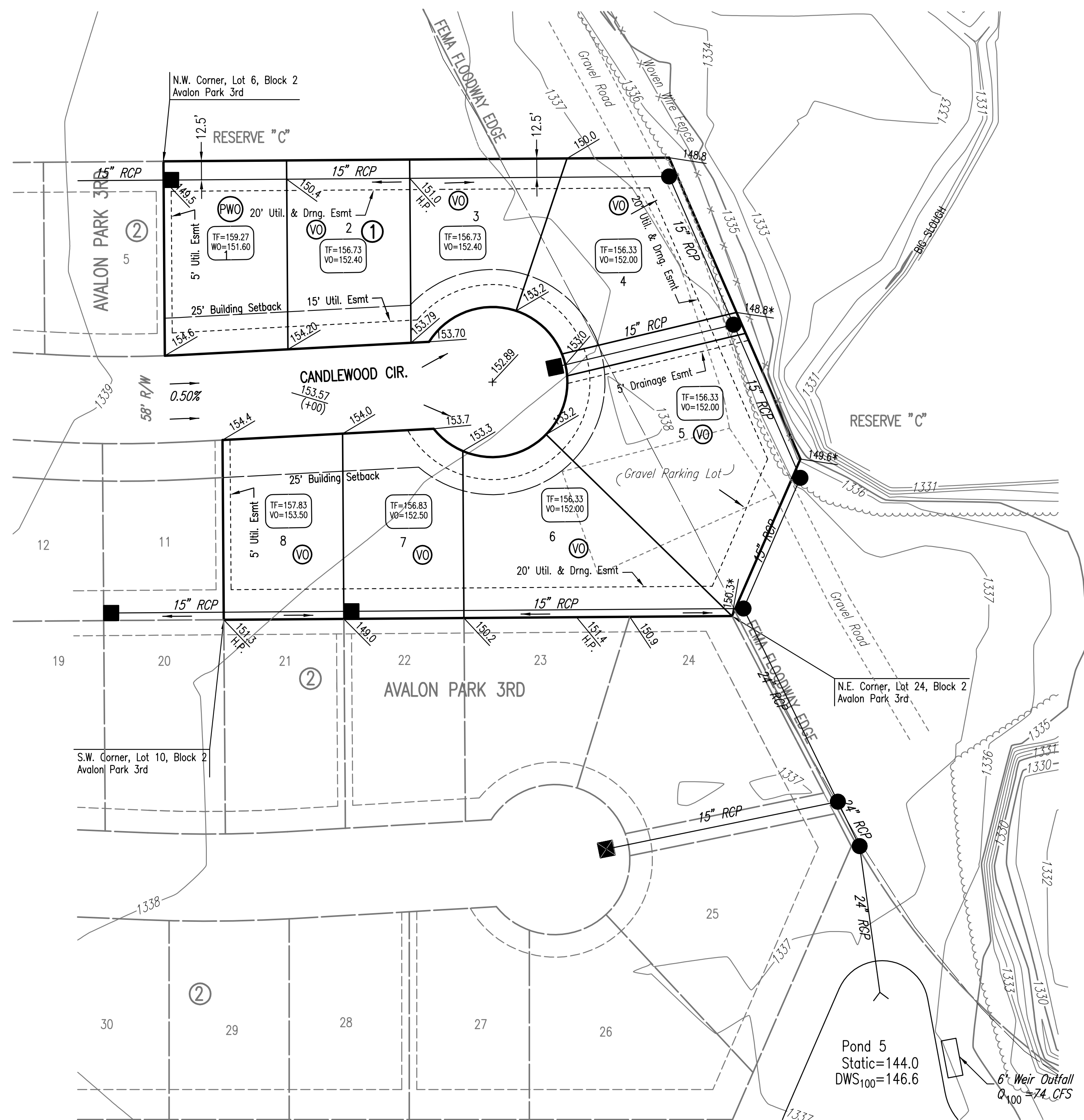


FOUR CORNER PLAN FOR  
**AVALON PARK 4TH**  
 AN ADDITION TO WICHITA,  
 SEDGWICK COUNTY, KANSAS



SCALE: 1" = 50'

= 1/2" REBAR W/PEC CAP UNLESS OTHERWISE NOTED

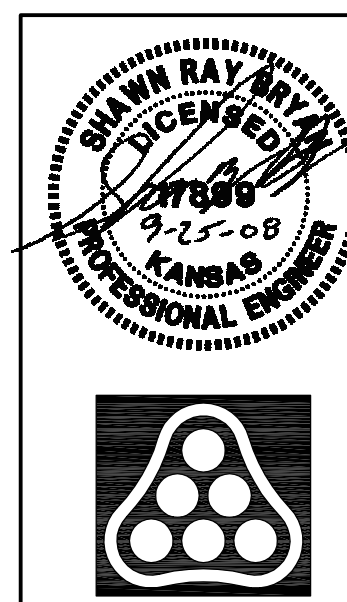
REVISION DATE:  
 SEPTEMBER 25, 2008

**LEGEND**

- MINOR STORM WATER FLOW (Q<sub>2</sub>)
- +152.01 PROPOSED SPOT ELEVATION
- +152.01 HP HIGH POINT ELEVATION
- +152.01\* MATCH EXISTING ELEVATION
- STORM SEWER AND INLET
- STORM SEWER AND MANHOLE
- ⊙ VIEW-OUT BASEMENT
- ⊙ WALK-OUT BASEMENT
- ⊙ STANDARD BASEMENT
- ⊙ POSSIBLE WALK-OUT BASEMENT
- ⊙ POSSIBLE VIEW-OUT BASEMENT

		ELEVATION	
MINIMUM OPENINGS		N.G.V.D.	City Datum
BLOCK 1			
LOTS 1-8		1338.00	151.60

NOTE: PROPOSED ELEVATIONS ARE SHOWN IN CITY OF WICHITA VERTICAL DATUM. EXISTING ELEVATIONS ARE SHOWN IN NGVD29 VERTICAL DATUM, CONVERSION: NGVD29-1187.4= C.O.W.DATUM



No.	Revision	By	Date
<b>FOUR CORNER PLAN</b>			
<b>Professional Engineering Consultants, P.A.</b>			
303 S. TOPEKA • WICHITA, KANSAS 67202 316-262-2691 • FAX 316-262-3003			
Designed by	BMM	Job No.	35-03601
Drawn by	BJS, TAT	Date	April 2007
			Sheet 1 of

SAVED 09-25-2008 9:27:56 AM BY BJK  
 Plot Scale 1:50 09-30-2008 4:02:52 PM  
 G:\2003\03601\LD\DWG\4 CornerP 4TH