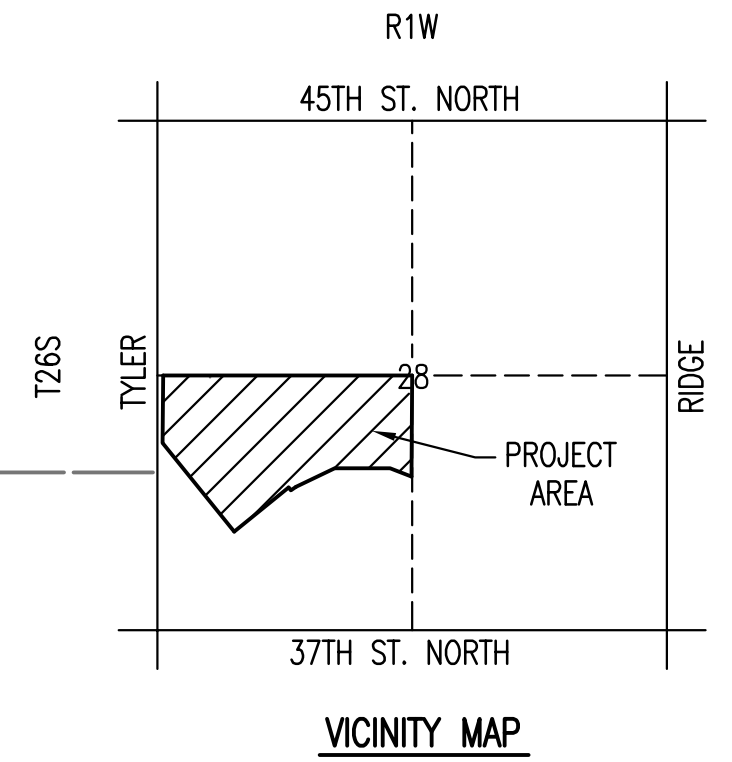


# FOUR-CORNER PLAN AVALON PARK 3RD

AN ADDITION TO WICHITA,  
SEDGWICK COUNTY, KANSAS

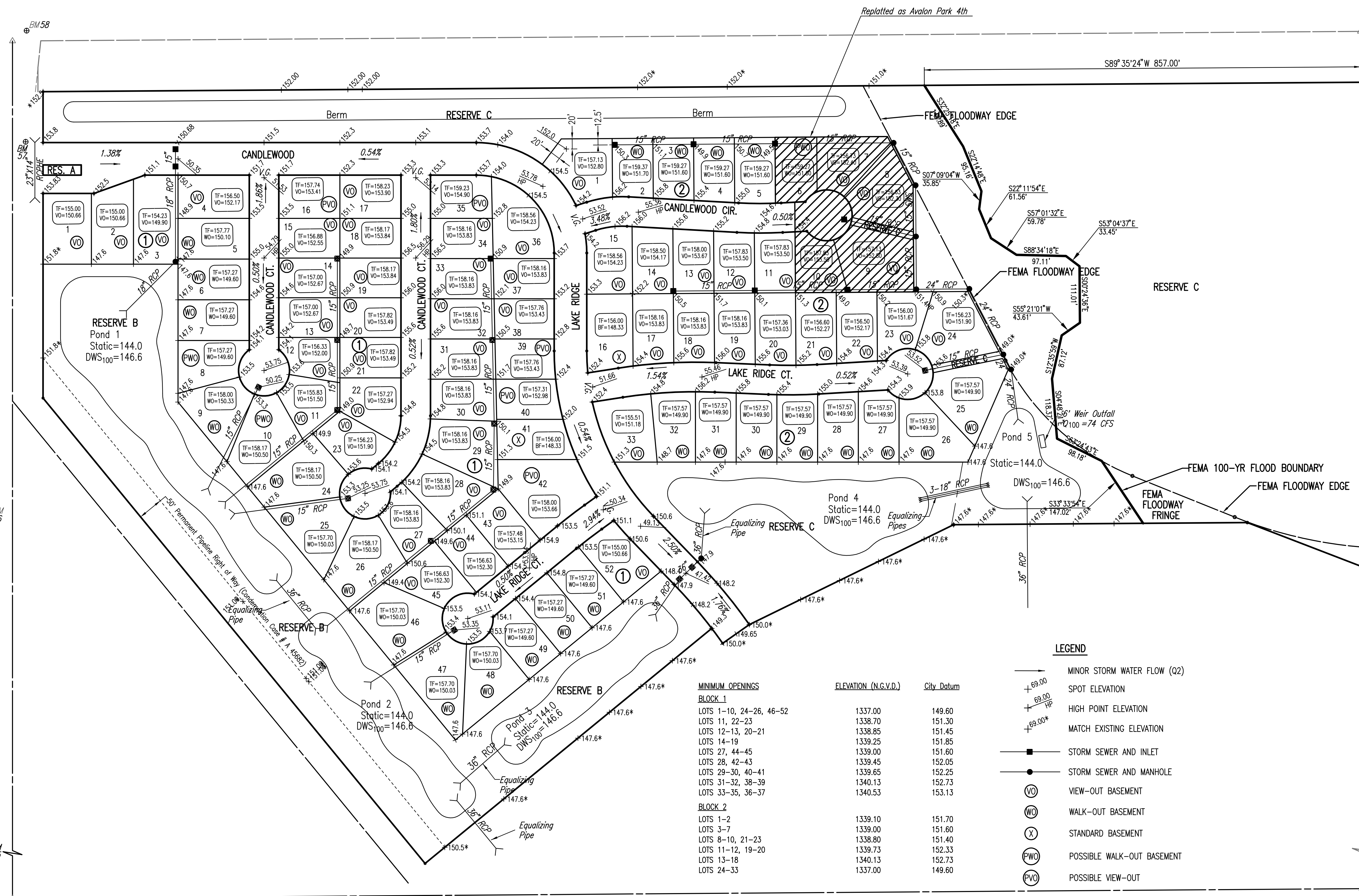
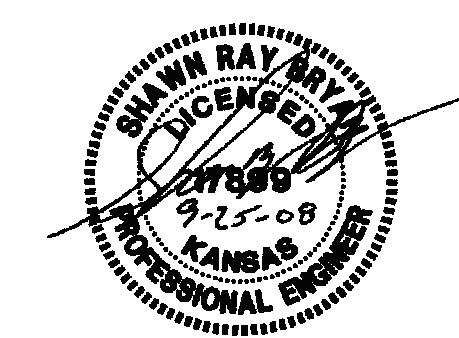
REVISION DATE:  
SEPTEMBER 25, 2008



SCALE: 1" = 100'

**BENCHMARKS:**

- BM #55 - R.R. Spike in E. face Power Pole W. side Tyler Rd. at House #3915  
Elev.=1340.28 N.G.V.D.  
Elev.=152.88 CITY DATUM
- BM #56 - R.R. Spike in E. face Power Pole W. side Tyler Rd. 2nd Pole S. of R.R. Tracks  
Elev.=1339.98 N.G.V.D.  
Elev.=152.58 CITY DATUM
- BM #57 - Chiseled "d" on S. end RCP at entrance to "the edge" Paintball Adventures, E. side Tyler Rd. between R.R. Tracks and K96 Highway.  
Elev.=1340.74 N.G.V.D.  
Elev.=153.34 CITY DATUM
- BM #58 - Chiseled "d" on S. end concrete headwall, E. end RCB under Tyler Rd. at 1/2 mile line, S. of K96 Highway.  
Elev.=1342.03 N.G.V.D.  
Elev.=154.63 CITY DATUM



**LEGEND**

- MINOR STORM WATER FLOW (Q2)
- + 69.00 SPOT ELEVATION
- + 69.00 HP HIGH POINT ELEVATION
- + 69.00\* MATCH EXISTING ELEVATION
- STORM SEWER AND INLET
- STORM SEWER AND MANHOLE
- VO VIEW-OUT BASEMENT
- WO WALK-OUT BASEMENT
- X STANDARD BASEMENT
- PWO POSSIBLE WALK-OUT BASEMENT
- PVO POSSIBLE VIEW-OUT

MINIMUM OPENINGS	ELEVATION (N.G.V.D.)	City Datum
<b>BLOCK 1</b>		
LOTS 1-10, 24-26, 46-52	1337.00	149.60
LOTS 11, 22-23	1338.70	151.30
LOTS 12-13, 20-21	1338.85	151.45
LOTS 14-19	1339.25	151.85
LOTS 27, 44-45	1339.00	151.60
LOTS 28, 42-43	1339.45	152.05
LOTS 29-30, 40-41	1339.65	152.25
LOTS 31-32, 38-39	1340.13	152.73
LOTS 33-35, 36-37	1340.53	153.13
<b>BLOCK 2</b>		
LOTS 1-2	1339.10	151.70
LOTS 3-7	1339.00	151.60
LOTS 8-10, 21-23	1338.80	151.40
LOTS 11-12, 19-20	1339.73	152.33
LOTS 13-18	1340.13	152.73
LOTS 24-33	1337.00	149.60

Plot Scale: 1"=100' 09-30-2008 3:55:48 PM  
 © 2008 SHAWN RAY P.E. (0801) LDD (ang) 4 Corner