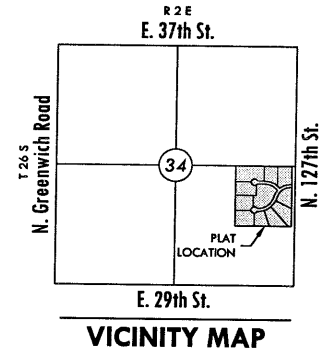


REUSSER ADDITION
REUSSER'S ADDITION
WICHITA, KANSAS
DRAINAGE AND UTILITY PLAN

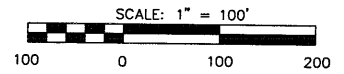
LEGEND

- - CONIFEROUS TREE
- - DECIDUOUS TREE
- SN - SIGN
- PP - POWER POLE
- ELEC BOX - ELECTRIC BOX
- LP - LIGHT POLE
- FH - FIRE HYDRANT
- WV - WATER VALVE
- WM - WATER METER
- SC - SECTION CORNER
- BM - BENCHMARK
- - - - - EASEMENT
- - - - - BUILDING SETBACK
- - - - - FENCE
- - - - - STORM SEWER PIPE
- - - - - WATER LINE
- - - - - SANITARY SEWER LINE
- - - - - GAS LINE
- - - - - GAS PIPELINE
- - - - - TELEPHONE LINE
- - - - - UNDERGROUND ELEC.
- - - - - OVERHEAD ELECTRIC
- - - - - FIBER OPTIC CABLE
- - - - - DRAINAGE BASIN
- - - - - SWS DRAINAGE AREA
- - - - - FLOW ARROW
- A17 - AREA FOR SWS SIZING

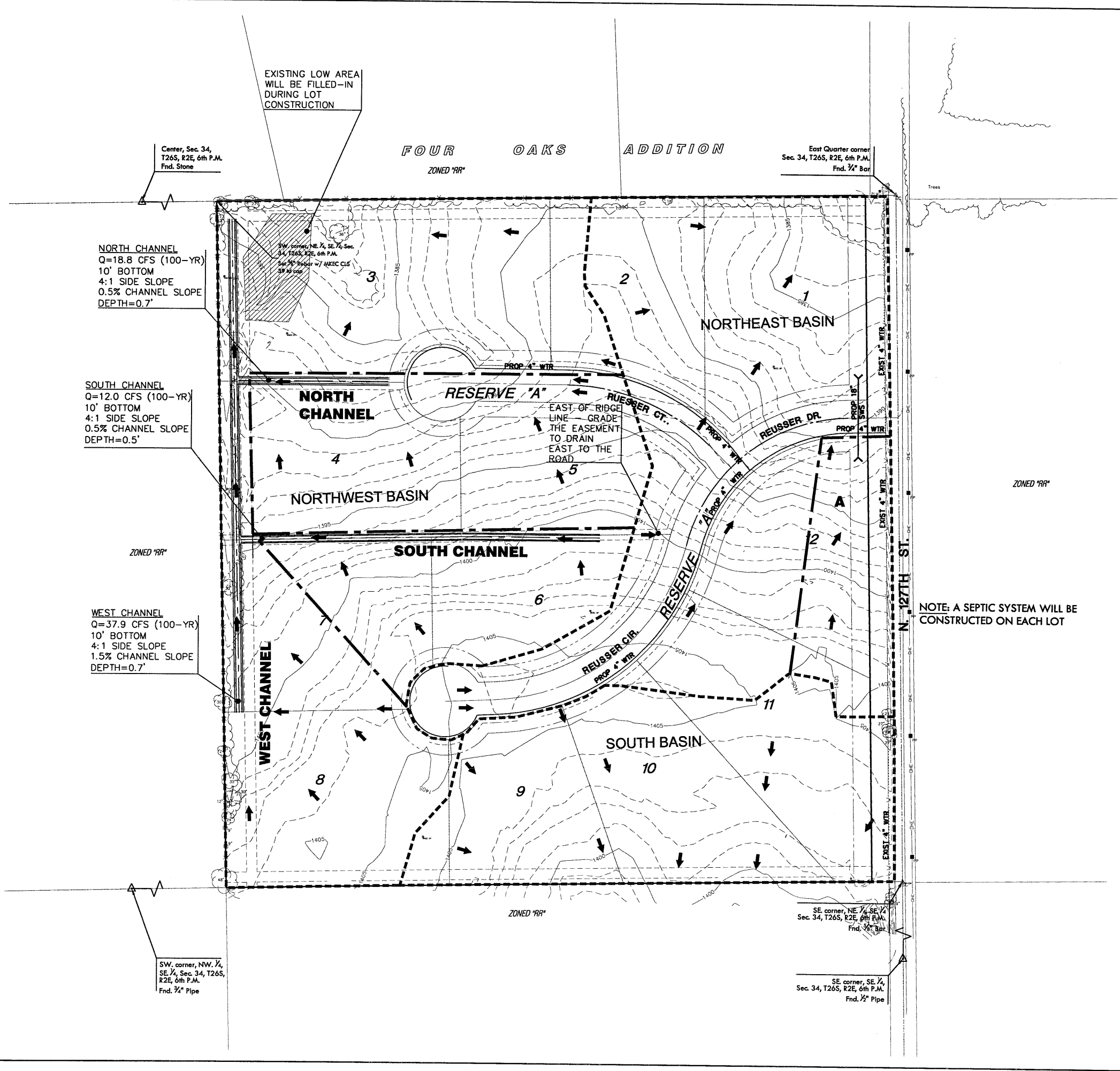


BENCHMARKS

- Date of Survey: April, 2008
- △ = Section corner Monument Found
 - = Found 5/8" rebar w/ MKEC
CLS 39 id. cap unless otherwise annotated
 - = Set 5/8" Rebar w/ MKEC
CLS 39 id. cap
 - (M) = Measured
 - (CM) = Calculated from measured



NOTE: A SEPTIC SYSTEM WILL BE CONSTRUCTED ON EACH LOT



NORTH CHANNEL
Q=18.8 CFS (100-YR)
10' BOTTOM
4:1 SIDE SLOPE
0.5% CHANNEL SLOPE
DEPTH=0.7'

SOUTH CHANNEL
Q=12.0 CFS (100-YR)
10' BOTTOM
4:1 SIDE SLOPE
0.5% CHANNEL SLOPE
DEPTH=0.5'

WEST CHANNEL
Q=37.9 CFS (100-YR)
10' BOTTOM
4:1 SIDE SLOPE
1.5% CHANNEL SLOPE
DEPTH=0.7'

EXISTING LOW AREA
WILL BE FILLED-IN
DURING LOT
CONSTRUCTION

Center, Sec. 34,
T26S, R2E, 6th P.M.
Fnd. Stone

SW corner, NE 1/4, SE 1/4, Sec.
34, T26S, R2E, 6th P.M.
Set 5/8" Rebar w/ MKEC CLS
39 id. cap

East Quarter corner
Sec. 34, T26S, R2E, 6th P.M.
Fnd. 3/4" Bar

SE corner, NE 1/4, SE 1/4,
Sec. 34, T26S, R2E, 6th P.M.
Fnd. 3/4" Bar

SE corner, SE 1/4,
Sec. 34, T26S, R2E, 6th P.M.
Fnd. 1/2" Pipe

SW corner, NW 1/4,
SE 1/4, Sec. 34, T26S,
R2E, 6th P.M.
Fnd. 3/4" Pipe

J:\Civil\07698_ReusserBros\dwg\Drng\07698_dup.dwg

DATE
SEPTEMBER 2008

REVISED
SEPTEMBER 18 2008
OCTOBER 2008

DESIGN BY
TMH

DRAWN BY
CMJ

CHECKED BY
GJA

SHEET NUMBER
1