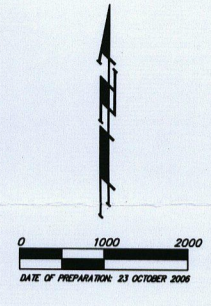
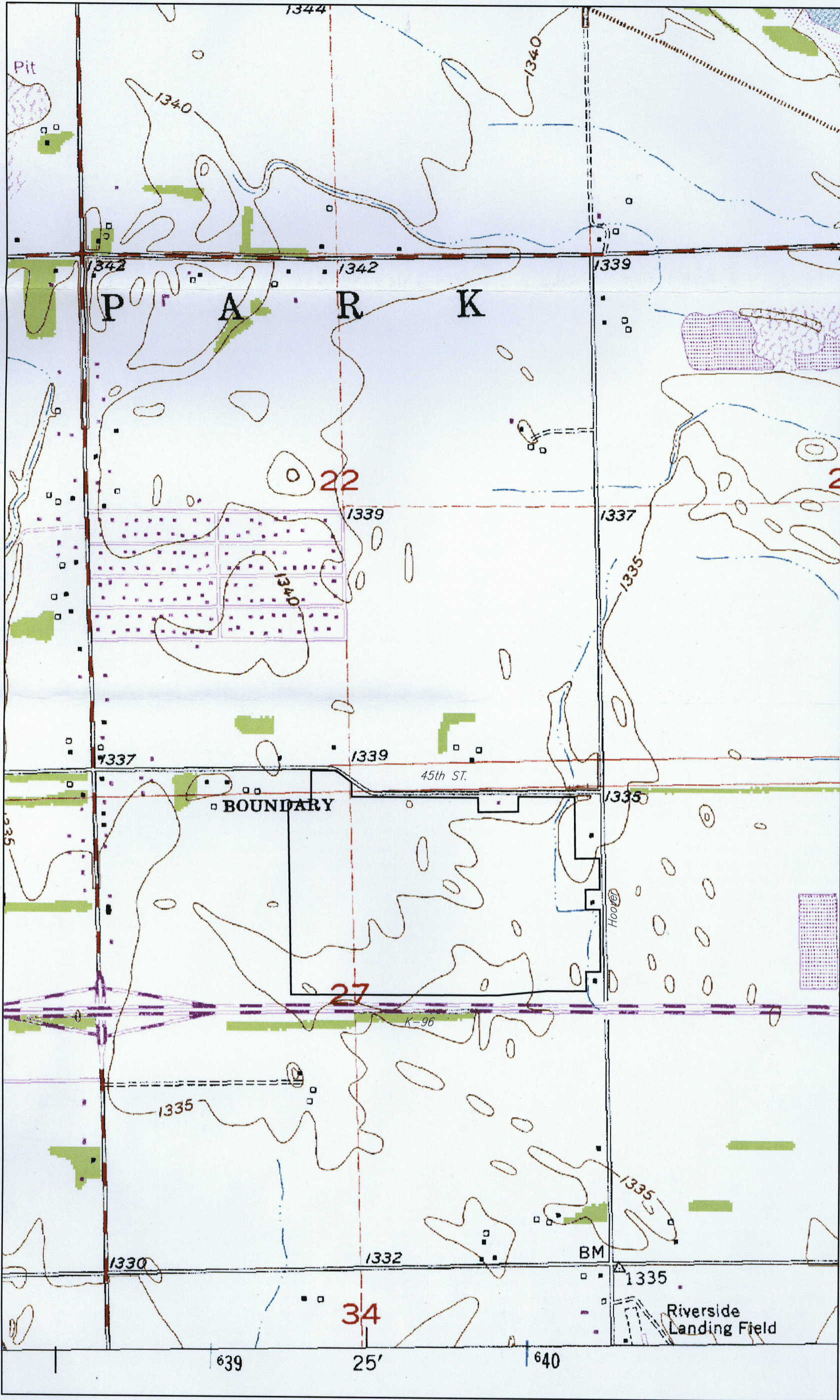
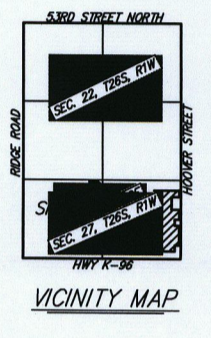


SITE LOCATION EDGE WATER ADDITION WICHITA, SEDGWICK COUNTY, KANSAS



BENCHMARK:
RODNEY AND 45TH ST. NORTH
CITY OF WICHITA IS OWNER OF INTERSECTION
BENCH MARK IS 10' ON THE CORNER
BENCH MARK IS 10' ON THE CORNER
BENCH MARK IS 10' ON THE CORNER
BENCH MARK IS 10' ON THE CORNER
BENCH MARK IS 10' ON THE CORNER



SITE INFORMATION:
TOTAL AREA: 314± ACRES

NOTES: No FEMA Special Flood Hazard Area exists on this property as of January 25, 2007.

25 JANUARY 2007

B **Baughman Company, P.A.**
315 S.W. 5th St., Wichita, KS 67211 F 316-262-7271 F 316-262-0149
Baughman ENGINEERING | SURVEYING | PLANNING | LANDSCAPE ARCHITECTURE
FI:\HYDRO\Projects\Baue1 - 45th & Hoover\45TH&HOOPER_Arnsgrube.dwg