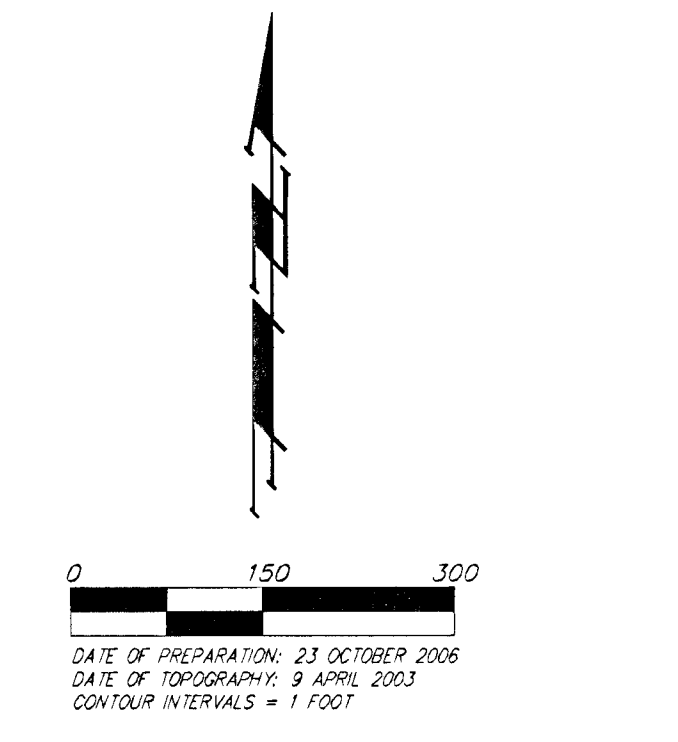
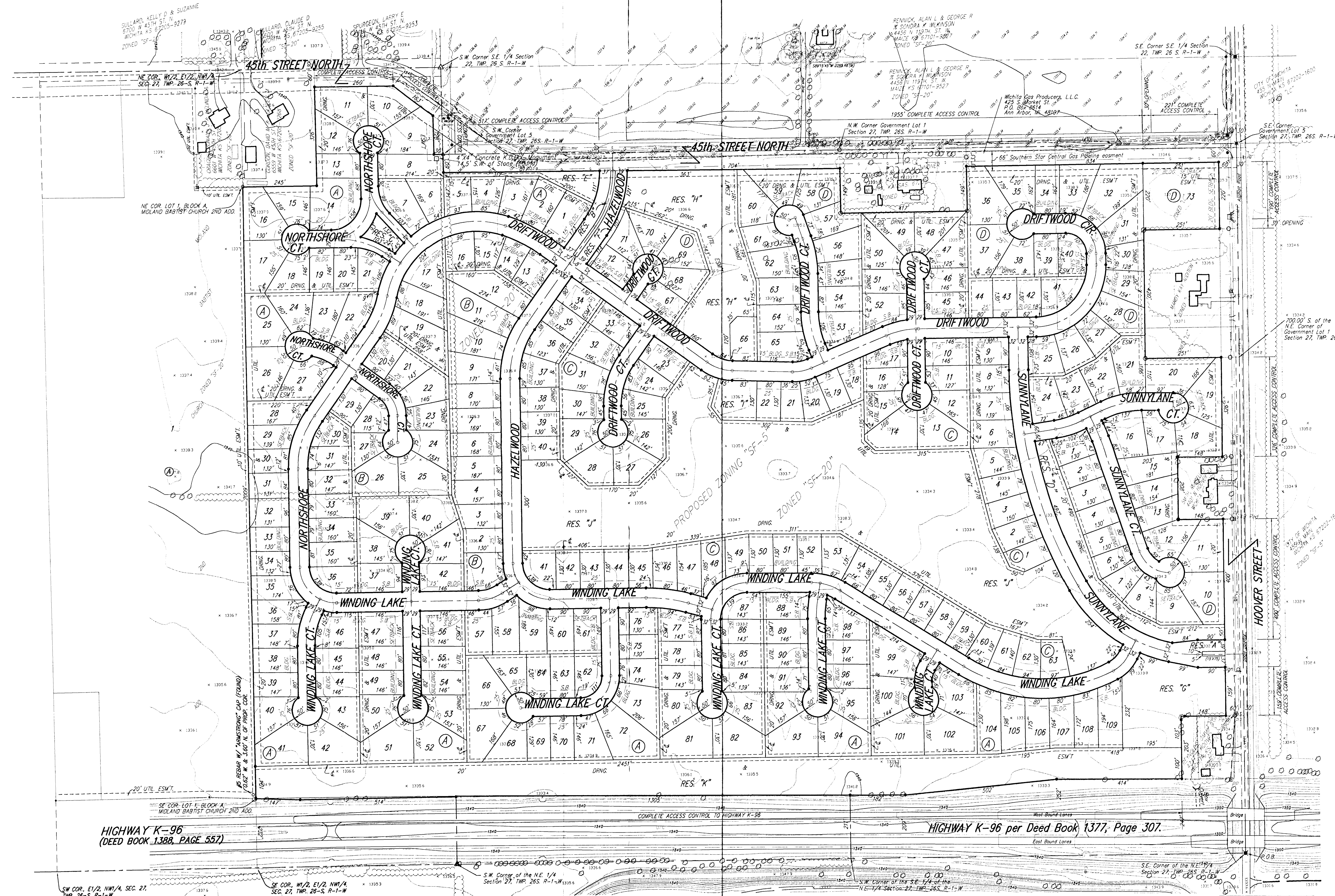


PRELIMINARY PLAT
WINDING LAKE ESTATES
 WICHITA, SEDGWICK COUNTY, KANSAS



MARKHURD
 TOPOGRAPHY BY PHOTOGRAMMETRIC METHODS FROM AERIAL PHOTOGRAPHS TAKEN ON APR 9, 2003

OWNER/DEVELOPER:
 RSR REALTY, LLC
 ATTN: JAY RUSSELL
 PO BOX 75337
 WICHITA, KS 67275
 722-2417

LEGAL DESCRIPTION:
 A TRACT OF LAND IN THE GOV. LOT 1, GOV. LOT 2, GOV. LOT 3, SE 1/4 OF THE NE 1/4, THE SW 1/4 OF THE NE 1/4 AND THE E 1/2 OF THE SE 1/4 OF THE NW 1/4, ALL LYING NORTH OF HIGHWAY K-96 AND ALL BEING SITUATED IN SEC. 27 TWP. 26S R-1-W OF THE 6TH P.M., SEDGWICK COUNTY, KANSAS.

BENCHMARK:
 HOOPER AND 45TH ST. NORTH
 CORNER BENCHMARK NE CORNER OF INTERSECTION
 10.20 FT SSE OF RP
 58.80 FT ESE OF RP ON NW CORNER
 83.50 FT NE OF GAS LINE MARKER
 59.00 FT NORTH OF GAS LINE MARKER
 48.50 FT EAST OF CENTERLINE
 14.50 FT NORTH OF CENTERLINE
 ELEVATION 1335.29 (NGVD 29)

RESERVES "A", "B", AND "C" ARE RESERVED FOR ENTRY MONUMENTS, OPEN SPACE, STREETS, LANDSCAPING, DRAINAGE PURPOSES, AND UTILITIES.

RESERVES "D", "E", AND "F" ARE RESERVED FOR ENTRY MONUMENTS, OPEN SPACE, LANDSCAPING, BERMS, SIDEWALKS, DRAINAGE PURPOSES, AND UTILITIES AS CONFINED TO EASEMENTS.

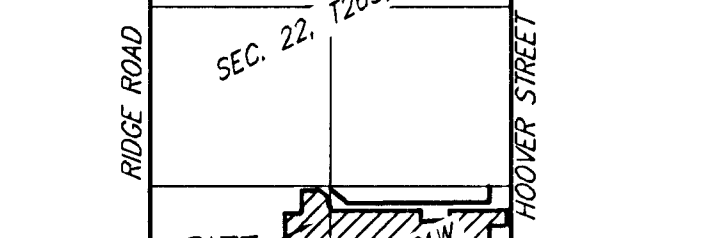
RESERVES "G" AND "H" ARE RESERVED FOR ENTRY MONUMENTS, OPEN SPACE, LAKES, LANDSCAPING, SIDEWALKS, DRAINAGE PURPOSES, AND UTILITIES AS CONFINED TO EASEMENTS.

RESERVE "I" IS RESERVED FOR OPEN SPACE, LANDSCAPING, SWIMMING POOL AND RELATED FACILITIES, PARKING, PLAYGROUND, SIDEWALKS, RECREATIONAL AREAS, DRAINAGE PURPOSES, AND UTILITIES AS CONFINED TO EASEMENTS.

RESERVE "J" IS RESERVED FOR OPEN SPACE, LANDSCAPING, LAKES, SIDEWALKS, BERMS, DRAINAGE PURPOSES, AND UTILITIES AS CONFINED TO EASEMENTS.

RESERVE "K" IS RESERVED FOR LANDSCAPING, BERMS, OPEN SPACE, DRAINAGE PURPOSES, AND UTILITIES AS CONFINED TO EASEMENTS.

- = #4 Baughman Company Rebar (Set)
- = 1/2" Iron Pipe (Found)
- = #5 Municipal Engineering Rebar (Found)
- ◆ = #4 Corber Rebar (Found)
- (M) = Measured
- (D) = Described
- (C) = Calculated
- = Power Pole
- = SWB Pad = Southwestern Bell Pedestal
- = PM = Gas Pipeline Marker
- = GM = Gas Meter
- = Guy = Guy Anchor
- △ = Sign = Sign



HIGHWAY K-96
 (DEED BOOK 1388, PAGE 557)

HIGHWAY K-96 per Deed Book 1377, Page 307.

