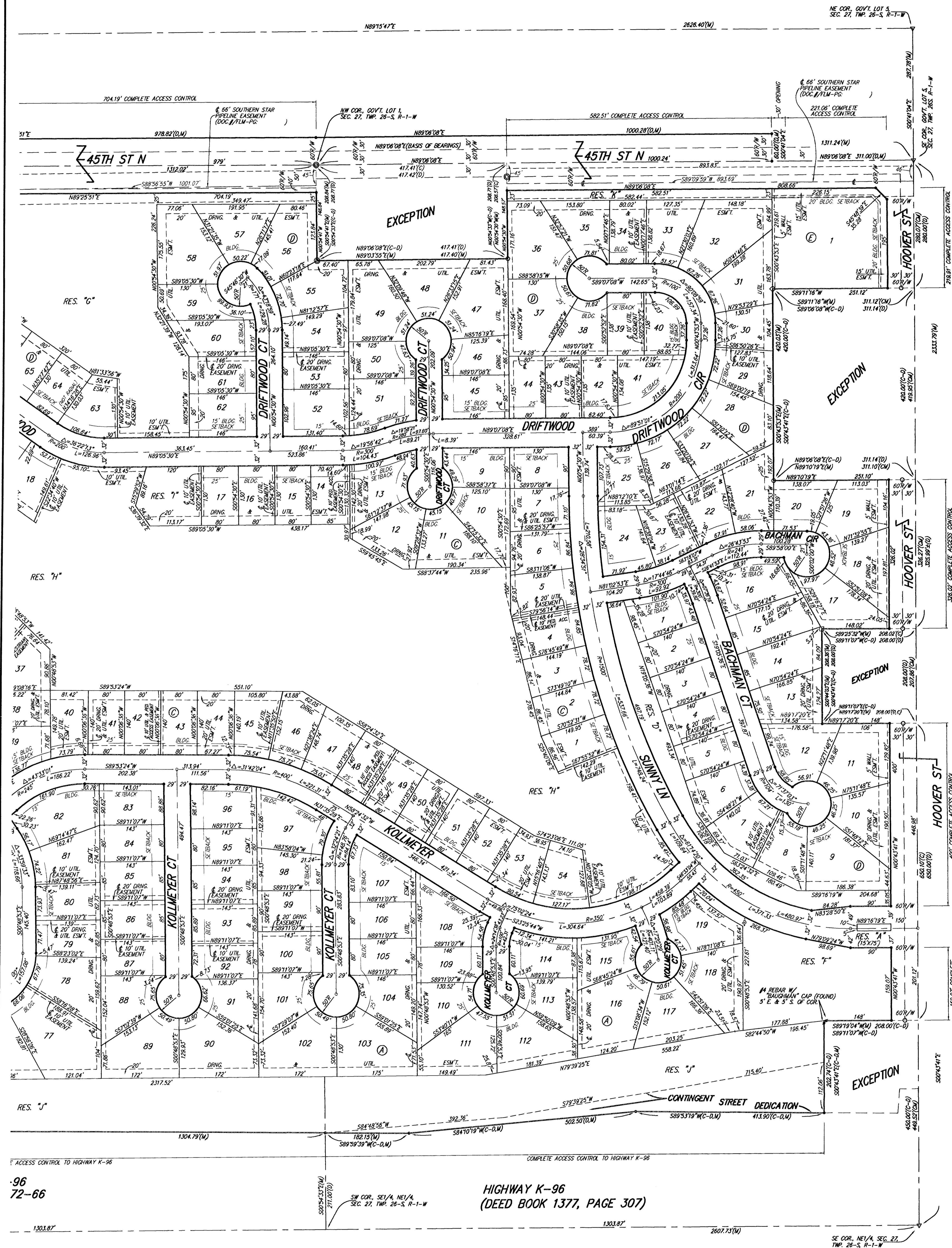


EDGE WATER ADDITION WICHITA, SEDGWICK COUNTY, KANSAS



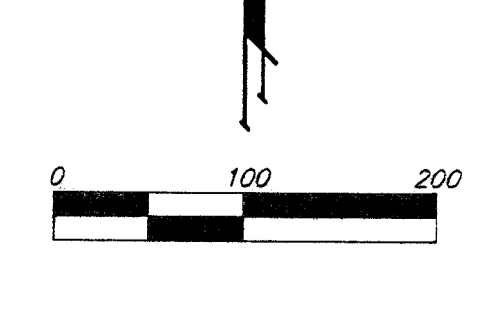
- #4 REBAR W/ "BAUGHMAN" CAP (SET)
- S-1 STONE (FOUND)
- S-2 "CAT" IRON (FOUND)
- 1/2" IRON (FOUND)
- #5 REBAR W/ "MUNICIPAL ENG." CAP (FOUND)
- #4 REBAR W/ "SANDY" CAP (FOUND)
- #4 REBAR W/ "TILE" CAP (FOUND)
- #4 REBAR W/ "BAUGHMAN" CAP (FOUND)
- #4 REBAR W/ "CARRER" CAP (FOUND)
- #5 REBAR IN STONE (FOUND)

LOT	BLOCK	ELEVATION
118-119	A	1338.0
1-6, 10-25	C	1333.1
35-38, 40-54	C	1333.1
56-67	D	1333.1

NOTE:
A master grading plan for drainage has been developed for this subdivision and is on file with the City of Wichita, Kansas. All drainage easements, right-of-way, or reserved shall remain at established grades or as modified with the approval of the City Engineer of the City of Wichita, Kansas. No obstructions which impede the flow of this drainage system be allowed.

NOTE:
BENCHMARK KANSAS GAS SURVEY COOPERATION POINTS OF INTEREST AND STATION POINTS 488, 487, AND 482, FIRST ASSIGNED TO CITIES SERVICE GAS COMPANY AND NOW ASSIGNED TO SOUTHERN STAR CENTRAL GAS PIPELINE AND OTHER GOVERNMENT LOTS 1 AND 2 IN NE 1/4 OF SEC. 27, TWP. 26-S, R-1-W AND GOVERNMENT LOTS 3, 4, AND 6 IN THE NW 1/4 OF SEC. 27, TWP. 26-S, R-1-W ARE IN THE PROCESS OF BEING RECORDED THIS DATE OF MAY 1, 2007.

(M) = MEASURED
(D) = DESCRIBED
(P) = PLATTED
(C) = CALCULATED
(CM) = CALCULATED PER MEASURED INFO
(C-P) = CALCULATED PER PLATTED INFO



BENCHMARK:
HOOPER AND 45TH ST NORTH
COW BENCHMARK NE CORNER OF INTERSECTION
58.80 FT ESE OF PP ON NW CORNER
65.00 FT NE OF GAS LINE MARKER
59.00 FT NORTH OF GAS LINE MARKER
25.00 FT EAST OF CENTERLINE
14.50 FT NORTH OF CENTERLINE
ELEVATION 1335.29 (NGVD 29)