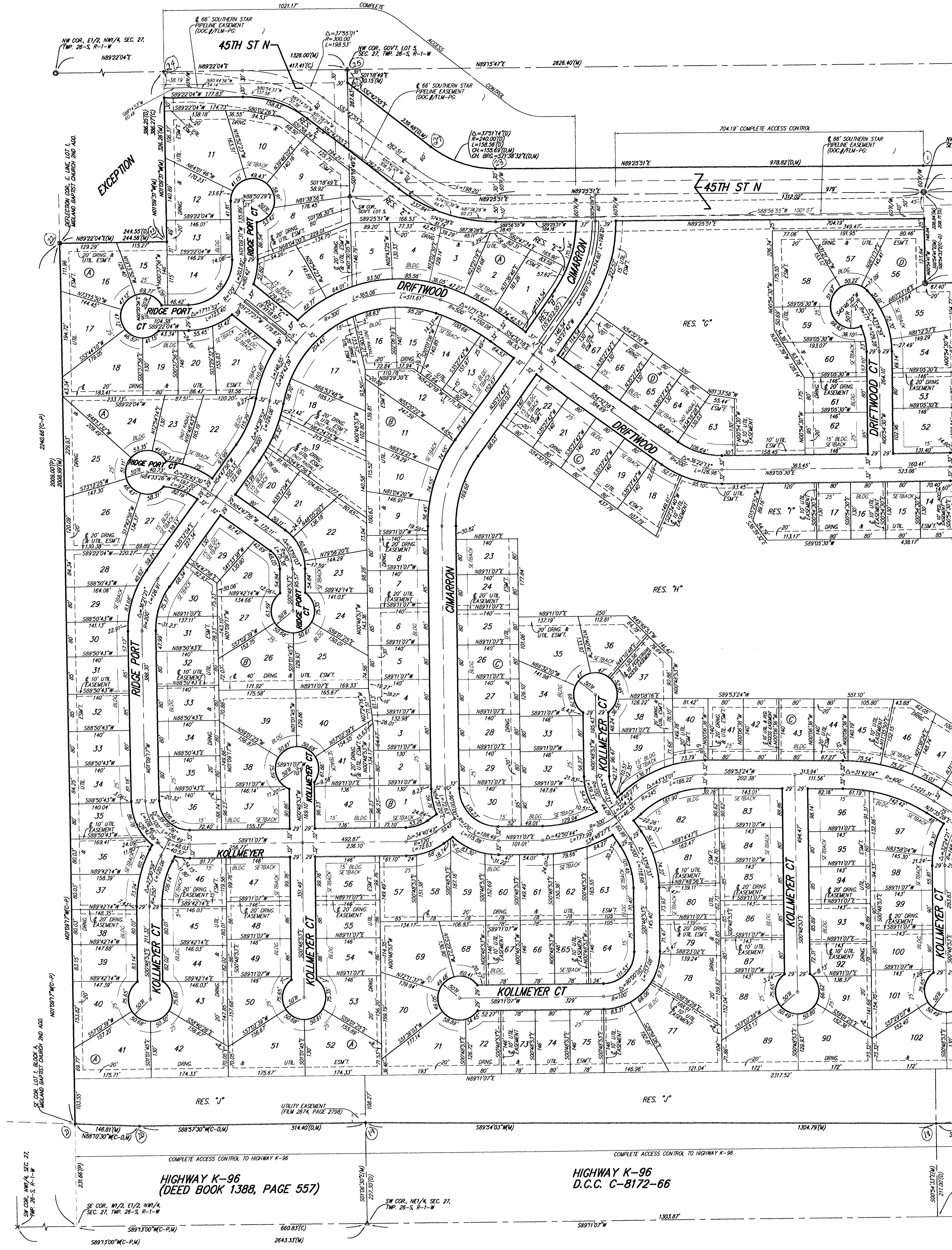


EDGE WATER ADDITION

WICHITA, SEDGWICK COUNTY, KANSAS



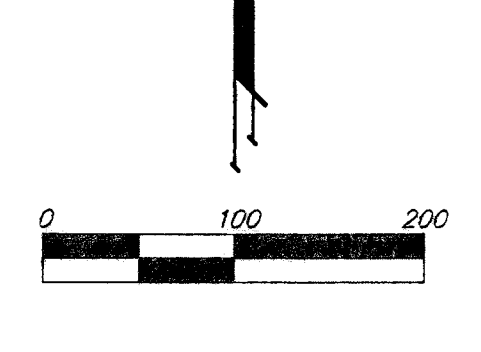
- = #4 REBAR W/ "BAUGHMAN" CAP (SET)
- = 3/4" IRON (FOUND)
- = 1/2" IRON (FOUND)
- = #5 REBAR W/ MINORAL ENG. CAP (FOUND)
- = #4 REBAR W/ "SAVOY" CAP (FOUND)
- = #4 REBAR W/ "TEST" CAP (FOUND)
- = #4 REBAR W/ "BAUGHMAN" CAP (FOUND)
- = CROSS (FOUND)
- = #4 REBAR W/ "BARBER" CAP (FOUND)
- = #5 REBAR IN STONE (FOUND)

MINIMUM BUILDING PAD ELEVATIONS FOR LOWEST OPENING TO THE STRUCTURES		
LOT	BLOCK	ELEVATION
118-119	A	1336.0
1-6, 10-25	C	1333.1
35-38, 40-54	C	1333.1
56-67	D	1333.1

NOTE:
A master grading plan for drainage has been developed for this subdivision and is on file with the City of Wichita, Kansas. All drainage easements, right-of-way, or reserves shall remain established grades or as modified with the approval of the City Engineer of the City of Wichita, Kansas. No obstructions which impede the flow of this drainage system be allowed.

NOTE:
KANSAS GAS SUPPLY CORPORATION RIGHTS-OF-WAY, INAC. BODY 308 PAGES 483-487 AND 493, PART ASSIGNED TO OTHER SERVICE GAS COMPANY AND NOW ASSIGNED TO SOUTHWESTERN POWER AND LIGHTING INC. DEPT. GOVERNMENT DIVISION AND 3 IN THE N.E. 1/4 OF SEC. 21, TWP. 26-S, R-1-W AND GOVERNMENT LOTS 1, 4, AND 5 IN THE N.E. 1/4 OF SEC. 21, TWP. 26-S, R-1-W ARE IN THE PROCESS OF BEING RELEASED AND 341 OF BAY, 2007.

(M) = MEASURED
(D) = DEPOSITED
(P) = PLATTED
(C) = CALCULATED
(C-D) = CALCULATED PER DEPOSITED INFO
(C-P) = CALCULATED PER PLATTED INFO



BENCHMARK:
HOOKER AND 45TH ST. NORTH
DOWN BENCHMARK NE CORNER OF INTERSECTION
102.50 FT. ESE. OF PP
58.50 FT. ESE. OF PP ON NW CORNER
85.00 FT. NE. OF GAS LINE MARKER
10.00 FT. NORTH OF GAS LINE MARKER
14.50 FT. NORTH OF CENTERLINE
ELEVATION 1335.29 (NGVD 29)