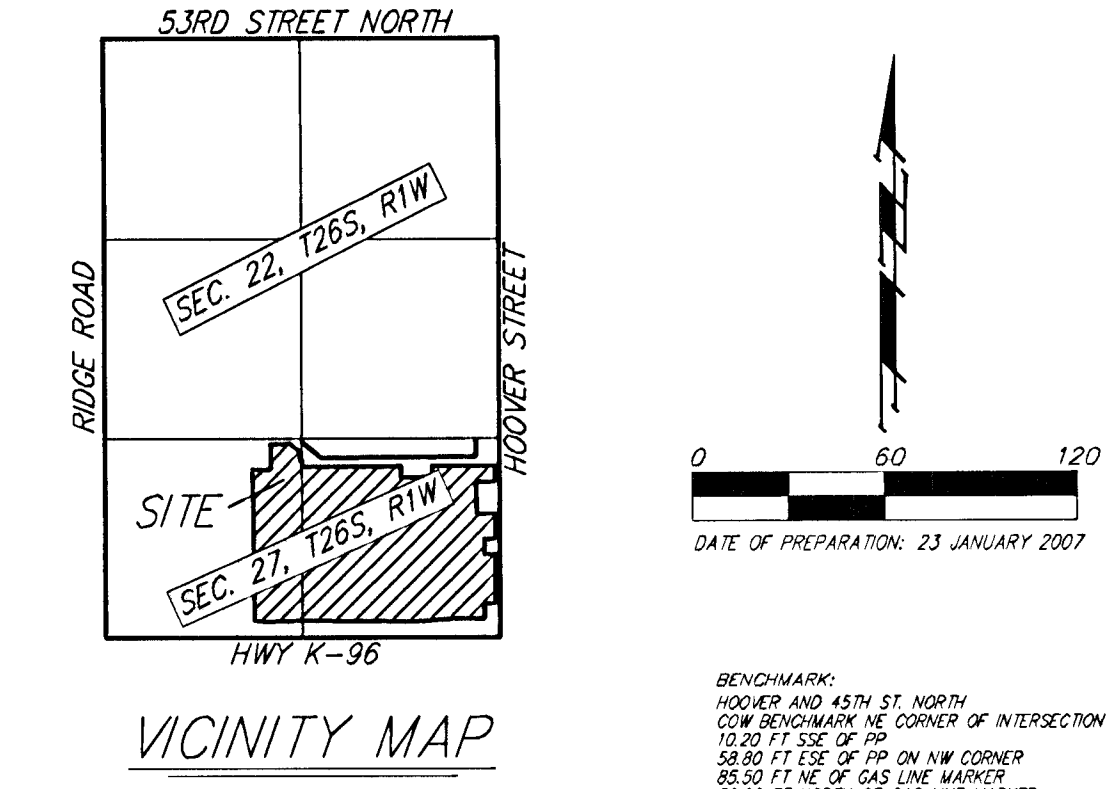
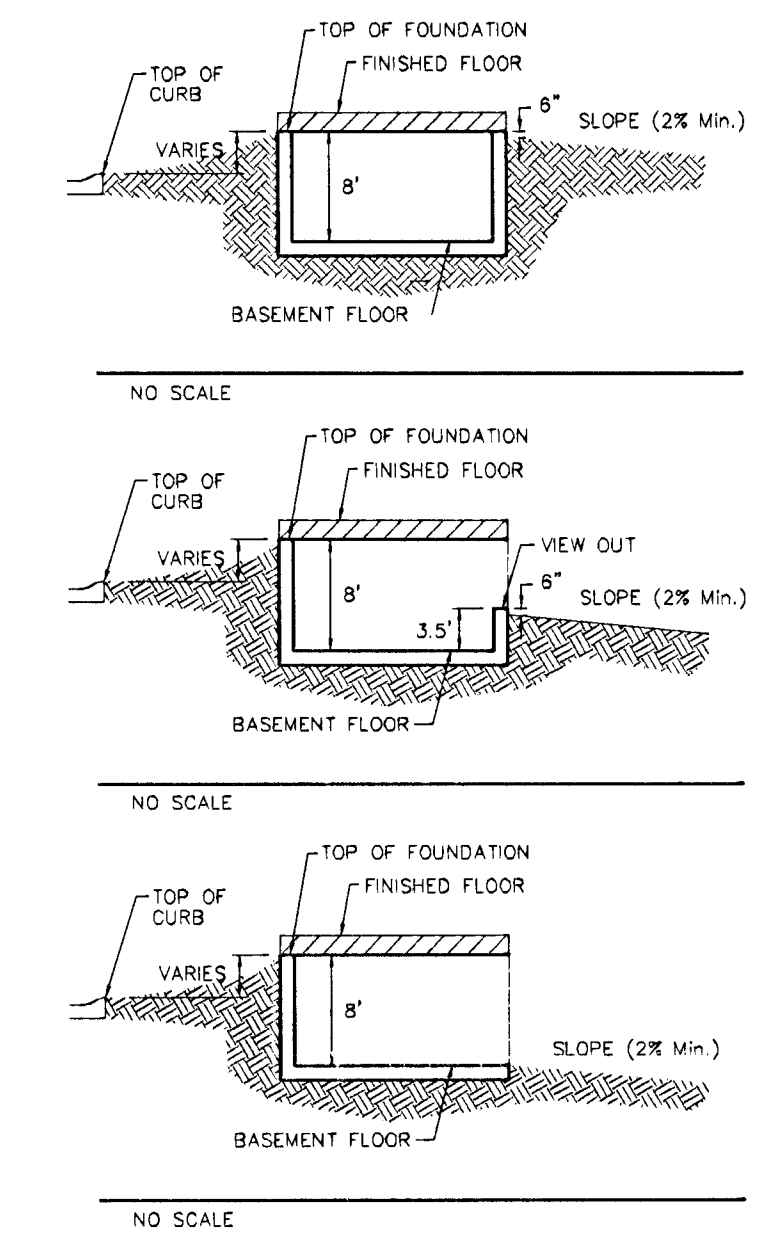
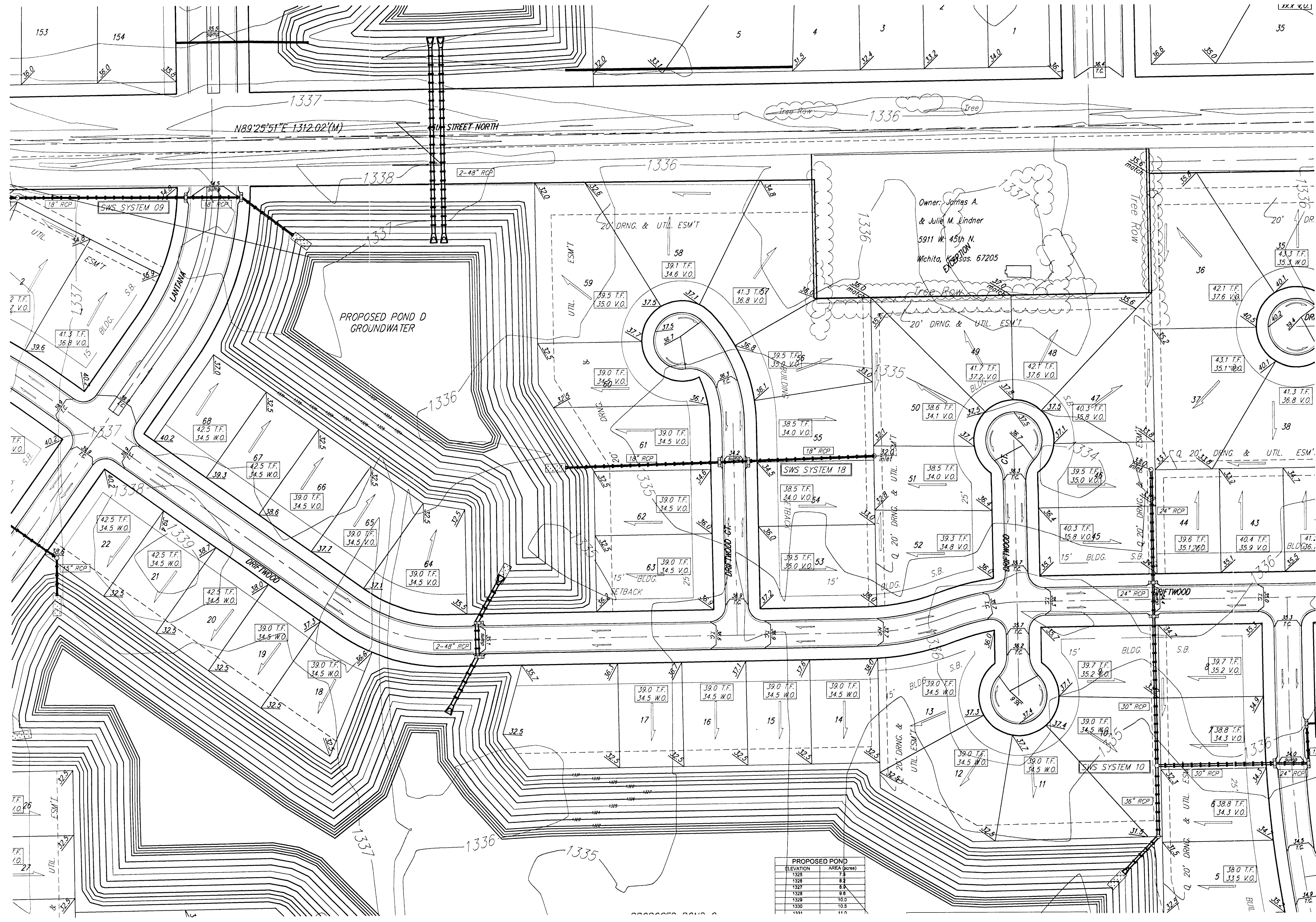


# GRADING PLAN EDGE WATER ADDITION WICHITA, SEDGWICK COUNTY, KANSAS



DATE OF PREPARATION: 23 JANUARY 2007

BENCHMARK:  
HOOVER AND 45TH ST. NORTH  
CORNER OF INTERSECTION  
12.50 FT. S.E. OF 70'  
38.00 FT. S.E. OF 70' ON NW CORNER  
85.50 FT. NORTH OF G.C. MARKER  
39.00 FT. EAST OF CENTERLINE  
14.50 FT. NORTH OF CENTERLINE  
ELEVATION 1335.29 (NOID 29)



- NOTES:**
1. PROPOSED TOP OF FOUNDATION ELEVATIONS ARE SHOWN ON PLANS. CONTRACTOR TO SET FINISHED FLOOR AND GARAGE FLOOR ELEVATIONS. ALL STREET ELEVATIONS SHOWN ON PLANS ARE FOR TOP OF CURB (FULL-HEIGHT).
  2. THIS GRADING PLAN IS DESIGNED WITH VIEW-OUTS AND WALK-OUTS. ELEVATIONS SHOWN AS XX.X V.O. DEPICT VIEW-OUT STRUCTURES. ELEVATIONS SHOWN AS XX.X W.O. DEPICT WALK-OUT STRUCTURES.
  3. ALL LOTS SHALL MEET MINIMUM PAD REQUIREMENT AS SHOWN ON THE RECORDED PLAT.

LOT	BLOCK	ELEVATION
118-119	A	1338.9
1-6-10-25	C	1333.1
35-38-40-54	C	1333.1
56-67	D	1333.1

4. LOT DIMENSIONS HAVE BEEN OMITTED ON THIS PLAN. REFER TO THE RECORDED PLAT FOR FINAL DIMENSION, EASEMENT, & BUILDING SETBACK INFORMATION.
5. HOUSE PAD ELEVATIONS DEPICTED WITH BOLD OUTLINES AND NOTED WITH THIS SYMBOL INDICATE THAT DEEP FOOTINGS OR DEEP FOUNDATIONS MAY BE REQUIRED.
6. A DRAINAGE PLAN HAS BEEN DEVELOPED FOR THIS SUBDIVISION AND IS ON FILE WITH THE CITY OF WICHITA, KANSAS. DRAINAGE INTENT SHALL REMAIN AS DEPICTED OR AS MODIFIED WITH THE APPROVAL OF THE CITY ENGINEER OF THE CITY OF WICHITA, KANSAS. NO OBSTRUCTIONS WHICH IMPEDE THE FLOW OF THIS DRAINAGE PLAN SHALL BE ALLOWED.
7. ALL ELEVATIONS SHOWN ARE IN NVGD.

ELEVATION	AREA (SQ.FT.)
1329	7.9
1328	8.8
1327	8.8
1326	9.8
1325	10.8
1324	11.8
1323	12.8
1322	13.8
1321	14.8
1320	15.8
1319	16.8
1318	17.8
1317	18.8
1316	19.8
1315	20.8
1314	21.8
1313	22.8
1312	23.8
1311	24.8
1310	25.8
1309	26.8
1308	27.8
1307	28.8
1306	29.8
1305	30.8
1304	31.8
1303	32.8
1302	33.8
1301	34.8
1300	35.8
1299	36.8
1298	37.8
1297	38.8
1296	39.8
1295	40.8
1294	41.8
1293	42.8
1292	43.8
1291	44.8
1290	45.8
1289	46.8
1288	47.8
1287	48.8
1286	49.8
1285	50.8
1284	51.8
1283	52.8
1282	53.8
1281	54.8
1280	55.8
1279	56.8
1278	57.8
1277	58.8
1276	59.8
1275	60.8
1274	61.8
1273	62.8
1272	63.8
1271	64.8
1270	65.8
1269	66.8
1268	67.8
1267	68.8
1266	69.8
1265	70.8
1264	71.8
1263	72.8
1262	73.8
1261	74.8
1260	75.8
1259	76.8
1258	77.8
1257	78.8
1256	79.8
1255	80.8
1254	81.8
1253	82.8
1252	83.8
1251	84.8
1250	85.8
1249	86.8
1248	87.8
1247	88.8
1246	89.8
1245	90.8
1244	91.8
1243	92.8
1242	93.8
1241	94.8
1240	95.8
1239	96.8
1238	97.8
1237	98.8
1236	99.8
1235	100.8
1234	101.8
1233	102.8
1232	103.8
1231	104.8
1230	105.8
1229	106.8
1228	107.8
1227	108.8
1226	109.8
1225	110.8
1224	111.8
1223	112.8
1222	113.8
1221	114.8
1220	115.8
1219	116.8
1218	117.8
1217	118.8
1216	119.8
1215	120.8
1214	121.8
1213	122.8
1212	123.8
1211	124.8
1210	125.8
1209	126.8
1208	127.8
1207	128.8
1206	129.8
1205	130.8
1204	131.8
1203	132.8
1202	133.8
1201	134.8
1200	135.8
1199	136.8
1198	137.8
1197	138.8
1196	139.8
1195	140.8
1194	141.8
1193	142.8
1192	143.8
1191	144.8
1190	145.8
1189	146.8
1188	147.8
1187	148.8
1186	149.8
1185	150.8
1184	151.8
1183	152.8
1182	153.8
1181	154.8
1180	155.8
1179	156.8
1178	157.8
1177	158.8
1176	159.8
1175	160.8
1174	161.8
1173	162.8
1172	163.8
1171	164.8
1170	165.8
1169	166.8
1168	167.8
1167	168.8
1166	169.8
1165	170.8
1164	171.8
1163	172.8
1162	173.8
1161	174.8
1160	175.8
1159	176.8
1158	177.8
1157	178.8
1156	179.8
1155	180.8
1154	181.8
1153	182.8
1152	183.8
1151	184.8
1150	185.8
1149	186.8
1148	187.8
1147	188.8
1146	189.8
1145	190.8
1144	191.8
1143	192.8
1142	193.8
1141	194.8
1140	195.8
1139	196.8
1138	197.8
1137	198.8
1136	199.8
1135	200.8
1134	201.8
1133	202.8
1132	203.8
1131	204.8
1130	205.8
1129	206.8
1128	207.8
1127	208.8
1126	209.8
1125	210.8
1124	211.8
1123	212.8
1122	213.8
1121	214.8
1120	215.8
1119	216.8
1118	217.8
1117	218.8
1116	219.8
1115	220.8
1114	221.8
1113	222.8
1112	223.8
1111	224.8
1110	225.8
1109	226.8
1108	227.8
1107	228.8
1106	229.8
1105	230.8
1104	231.8
1103	232.8
1102	233.8
1101	234.8
1100	235.8
1099	236.8
1098	237.8
1097	238.8
1096	239.8
1095	240.8
1094	241.8
1093	242.8
1092	243.8
1091	244.8
1090	245.8
1089	246.8
1088	247.8
1087	248.8
1086	249.8
1085	250.8
1084	251.8
1083	252.8
1082	253.8
1081	254.8
1080	255.8
1079	256.8
1078	257.8
1077	258.8
1076	259.8
1075	260.8
1074	261.8
1073	262.8
1072	263.8
1071	264.8
1070	265.8
1069	266.8
1068	267.8
1067	268.8
1066	269.8
1065	270.8
1064	271.8
1063	272.8
1062	273.8
1061	274.8
1060	275.8
1059	276.8
1058	277.8
1057	278.8
1056	279.8
1055	280.8
1054	281.8
1053	282.8
1052	283.8
1051	284.8
1050	285.8
1049	286.8
1048	287.8
1047	288.8
1046	289.8
1045	290.8
1044	291.8
1043	292.8
1042	293.8
1041	294.8
1040	295.8
1039	296.8
1038	297.8
1037	298.8
1036	299.8
1035	300.8
1034	301.8
1033	302.8
1032	303.8
1031	304.8
1030	305.8
1029	306.8
1028	307.8
1027	308.8
1026	309.8
1025	310.8
1024	311.8
1023	312.8
1022	313.8
1021	314.8
1020	315.8
1019	316.8
1018	317.8
1017	318.8
1016	319.8
1015	320.8
1014	321.8
1013	322.8
1012	323.8
1011	324.8
1010	325.8
1009	326.8
1008	327.8
1007	328.8
1006	329.8
1005	330.8
1004	331.8
1003	332.8
1002	333.8
1001	334.8
1000	335.8
999	336.8
998	337.8
997	338.8
996	339.8
995	340.8
994	341.8
993	342.8
992	343.8
991	344.8
990	345.8
989	346.8
988	347.8
987	348.8
986	349.8
985	350.8
984	351.8
983	352.8
982	353.8
981	354.8
980	355.8
979	356.8
978	357.8
977	358.8
976	359.8
975	360.8
974	361.8
973	362.8
972	363.8
971	364.8
970	365.8
969	366.8
968	367.8
967	368.8
966	369.8
965	370.8
964	371.8
963	372.8
962	373.8
961	374.8
960	375.8
959	376.8
958	377.8
957	378.8
956	379.8
955	380.8
954	381.8
953	382.8
952	383.8
951	384.8
950	385.8
949	386.8
948	387.8
947	388.8
946	389.8
945	390.8
944	391.8
943	392.8
942	393.8
941	394.8
940	395.8
939	396.8
938	397.8
937	398.8
936	399.8
935	400.8
934	401.8
933	402.8
932	403.8