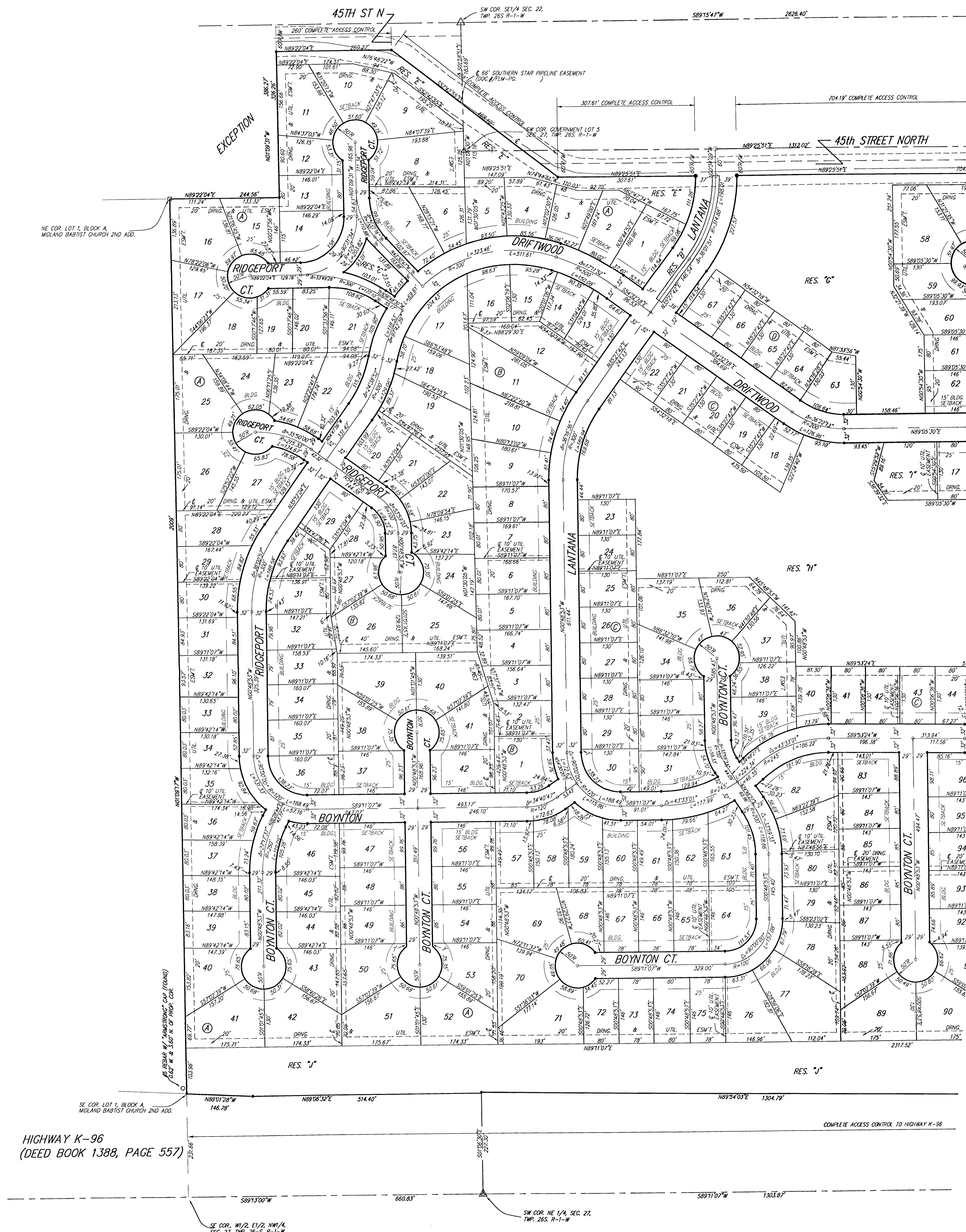


# EDGE WATER ADDITION WICHITA, SEDGWICK COUNTY, KANSAS



HIGHWAY K-96  
(DEED BOOK 1388, PAGE 557)

- = #4 Baughman Company Rebar (Set)
- = 1/2" Iron Pipe (Found)
- = #5 Municipal Engineering Rebar (Found)
- ✱ = #4 Garber Rebar (Found)
- (M) = Measured
- (Q) = Observed
- (C) = Calculated

NOTE:  
A drainage plan has been developed for this subdivision and is on file with the City of Wichita, Kansas. Drainage intent shall remain as depicted or as modified with the approval of the City Engineer of the City of Wichita, Kansas. No obstructions which impede the flow of this drainage system shall be allowed.

NOTE:  
A master grading plan for drainage has been developed for this subdivision and is on file with the City of Wichita, Kansas. All drainage easements, right-of-ways, or reserves shall remain as established or as modified with the approval of the City Engineer of the City of Wichita, Kansas. No obstructions which impede the flow of this drainage system shall be allowed.

LOT	BLOCK	ELEVATION
118-119	A	1336.0
1-6, 10-25	C	1333.1
35-38, 40-54	C	1333.1
56-67	D	1333.1

BENCHMARK:  
HODDER AND 45TH ST. NORTH  
SWM BENCHMARK NE CORNER OF INTERSECTION  
10.20 FT SSE OF RP  
58.80 FT ESE OF RP ON NW CORNER  
85.50 FT NE OF GAS LINE MARKER  
58.00 FT NORTH OF GAS LINE MARKER  
28.50 FT EAST OF CENTERLINE  
ELEVATION 1335.29 (NGVD 29)

