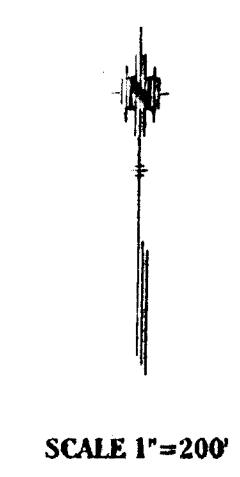
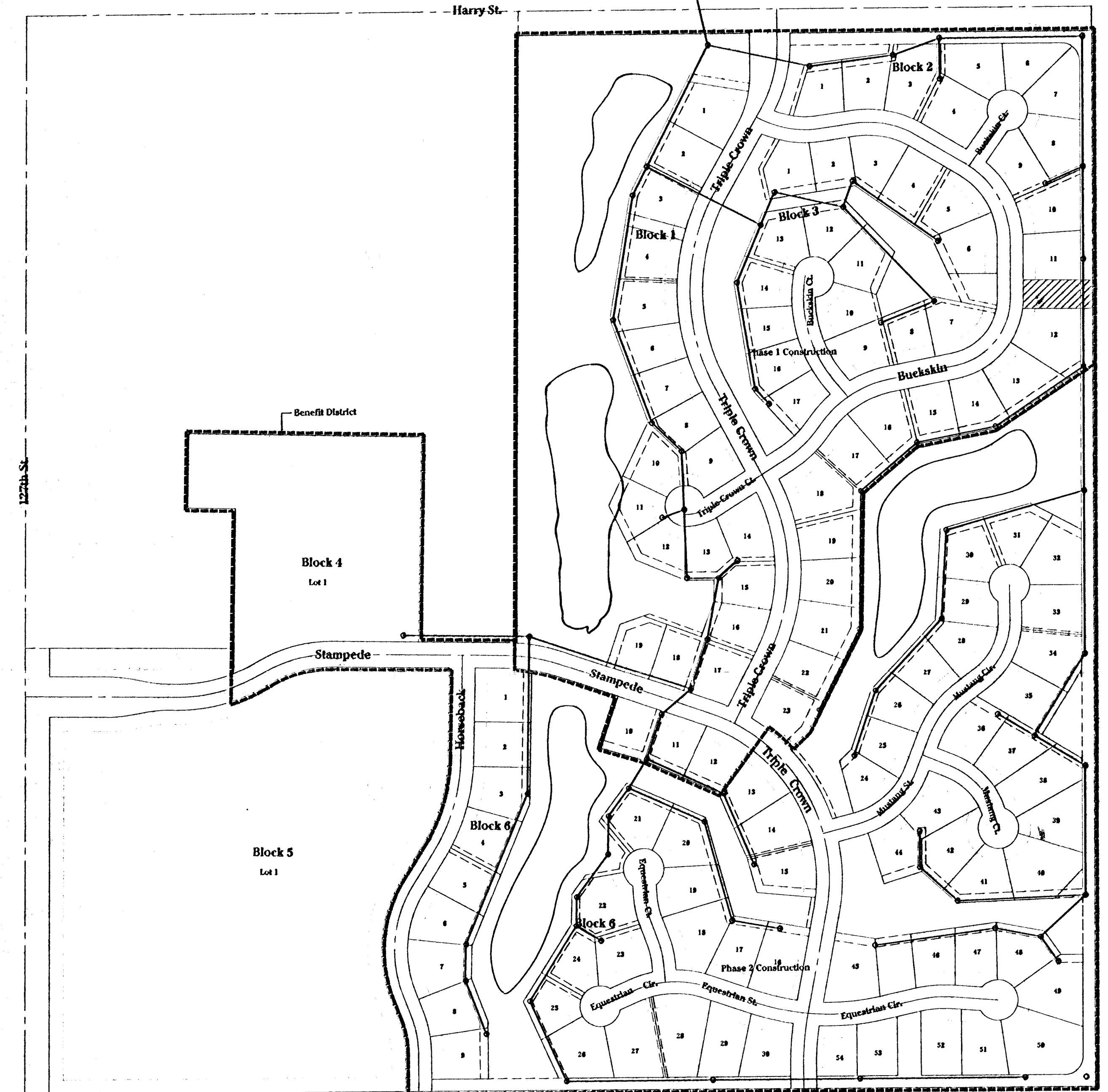


G:\VAP\LOCAL\BSSA\sewer-petition.dwg Tue Aug 07 11:46:52 2001 Nancy E. #111 P.E. - PUE & ASSOC. OF KANSAS



SCALE 1"=200'

BENCHMARKS

- 1. * * Cut on South Hub Guard of R.C.B.C. 28' South & 94' West of NW Cor. Sec. 35 Elev. 1211.90
- 2. Roll Road Spike in Power Pole, Approximately 29' South & 30' East of W. 1/4 Cor. Sec. 35 Elev. 1248.65

Phase 1 Petition - \$380,000
Phase 2 Petition - \$365,000

Sanitary Sewer Extensions
EQUESTRIAN ESTATES

Developer: John Greenstreet J.D.G., LLC
12221 E. Central
Wichita, KS 67206

Engineer: Poe and Associates of Kansas, Inc.
5940 E. Central
Wichita, KS 67208

DATE: August 8, 2001

An Addition to Wichita - Sedgwick County, Kansas
(Associated Zone Case PUD 2000-0001)