

STATE OF KANSAS, SEDGWICK COUNTY} ss:

CASE No:   SUB2008   - \_\_\_\_\_

Copy: \_\_\_\_\_ of 5

I, John L. Schlegel, Director of Planning, Wichita-Sedgwick County Metropolitan Area Planning Department, do hereby certify under the Authority granted in the Subdivision Rules and Regulations that the lot split to which this stamp affixed has been approved.

Given under my hand and seal this \_\_\_\_\_ day of \_\_\_\_\_, 2008.

WICHITA-SEDGWICK COUNTY METROPOLITAN AREA PLANNING DEPARTMENT

\_\_\_\_\_, Director of Planning  
John L. Schlegel, Director of Planning

Grantor:   APPALOOSA INVESTMENT, LP  

Grantee:   APPALOOSA INVESTMENT, LP.  

Type of Document:   LOT SPLIT  

Recording Fee:   \$16.00  

Mtg. Reg. Tax:   \$0  

Total Amount:   \$16.00  

Return Address:   MKEC Engineering Consultants Inc.  

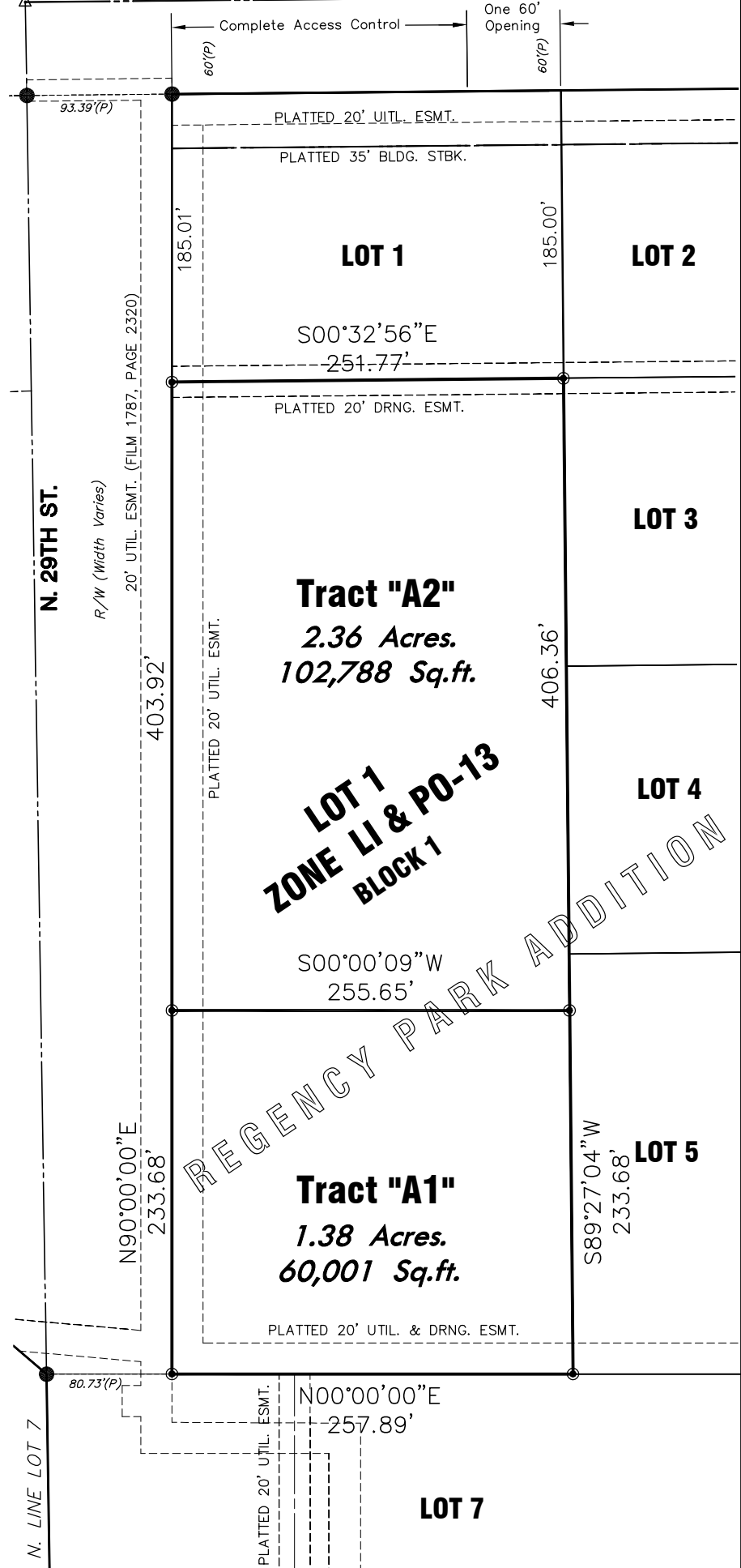
  411 N. Webb Rd.  

  Wichita, KS 67206  

<b>MKEC</b>		<b>REGENCY PARK ADDITION</b>	
ENGINEERING CONSULTANTS, INC.		PROJECT NAME	
<b>LOT SPLIT - DOCUMENTATION</b>		<b>LOT 1 BLOCK 1</b>	
SHEET TITLE		SHEET TITLE	
BDL	SMZ	BDL	BDL
411 N. WEBB ROAD	DESIGN BY:	411 N. WEBB ROAD	CHECKED BY:
WICHITA, KS. 67206		WICHITA, KS. 67206	
316-684-9600		316-684-9600	
	DATE	JANUARY 2008	196104
	JOB NO.		1 / 3
	SHEET/OF		

NE. Cor., NE. 1/4,  
Sec. 4, T26S, R2E, 6th P.M.

**GREENWICH RD.**



**Tract "A1"**

The West 233.68 feet of Lot 1, Block 1, Regency Park Addition, an addition to Wichita, Sedgwick County, Kansas. Said tract **CONTAINS:** 1.38 acres of land, more or less.

**Tract "A2"**

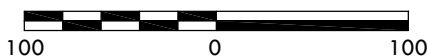
Lot 1, Block 1, Regency Park Addition, an addition to Wichita, Sedgwick County, Kansas, EXCEPT, the West 233.68 feet thereof. Said tract **CONTAINS:** 2.36 acres of land, more or less.

**LOT 1  
ZONE LI & PO-13  
BLOCK 1**

**REGENCY PARK ADDITION**

**LEGEND**

● = PROPERTY CORNER



**NOTES:**

1. See sheet 3 of 3 for site and utility concept.

**MKEC**  
ENGINEERING  
CONSULTANTS, INC.

411 N. WEBB ROAD  
WICHITA, K.S. 67206  
316-684-9600

**LOT 1, BLOCK 1  
REGENCY PARK ADDITION**

PROJECT NAME

**LOT SPLIT**

SHEET TITLE

BDL

DESIGN BY:

October 2008

DATE

SMZ

DRAWN BY:

96104

JOB NO.

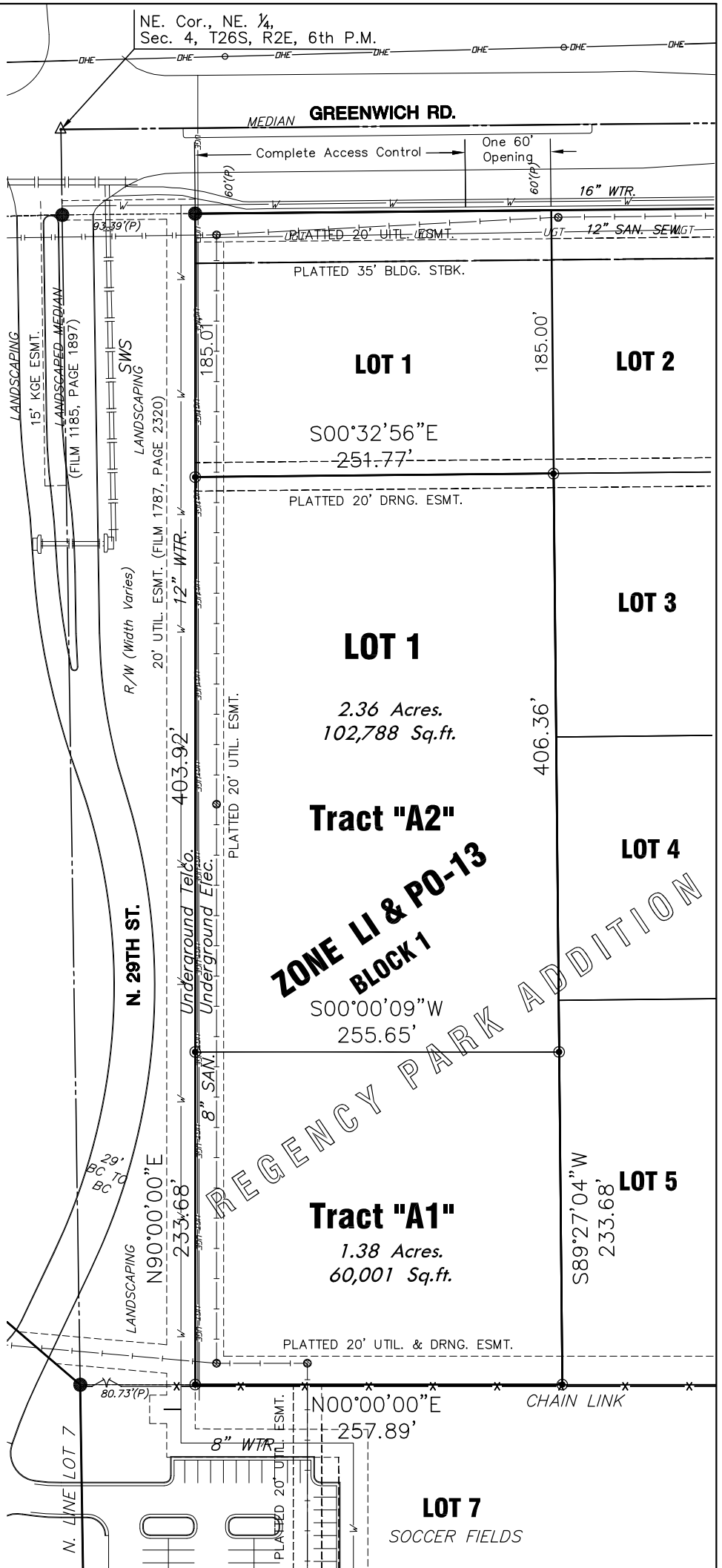
GJA

CHECKED BY:

2 / 3

SHEET/OF

NE. Cor., NE. 1/4,  
Sec. 4, T26S, R2E, 6th P.M.



**Tract "A1"**

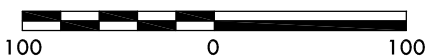
The West 233.68 feet of Lot 1, Block 1, Regency Park Addition, an addition to Wichita, Sedgwick County, Kansas. Said tract **CONTAINS:** 1.38 acres of land, more or less.

**Tract "A2"**

Lot 1, Block 1, Regency Park Addition, an addition to Wichita, Sedgwick County, Kansas, EXCEPT, the West 233.68 feet, AND EXCEPT, the East 185.00 feet thereof. Said tract **CONTAINS:** 2.36 acres of land, more or less.

**LEGEND**

- x-x-x- = FENCE
- FLOW — = SANITARY SEWER LINE
- = WATER LINE
- FH ⊙ = FIRE HYDRANT
- WV ⊗ = WATER VALVE
- SSMH ⊗ = SANITARY SEWER MANHOLE



**NOTES:**

1. Minimum Pad Elevation (none)
2. See sheet 2 of 3 for Legal Description
3. Said Tracts shall conform with Protective Overlay 13.

**MKEC**  
ENGINEERING  
CONSULTANTS, INC.

411 N. WEBB ROAD  
WICHITA, K.S. 67206  
316-684-9600

**LOT 1, BLOCK 1  
REGENCY PARK ADDITION**

PROJECT NAME

**UTILITY LAYOUT**

SHEET TITLE

BDL

DESIGN BY:

October 2008

DATE

SMZ

DRAWN BY:

96104

JOB NO.

GJA

CHECKED BY:

3 / 3

SHEET/OF