

PRELIMINARY PLAT ERNEST JORDAN ADDITION

WICHITA, SEDGWICK COUNTY, KANSAS

LEGAL DESCRIPTION:

Lots 1, 2, 3, 4, 5, 6, 7, 8, 9 and 10, Block D, West Maple Gardens, Sedgwick County, Kansas.

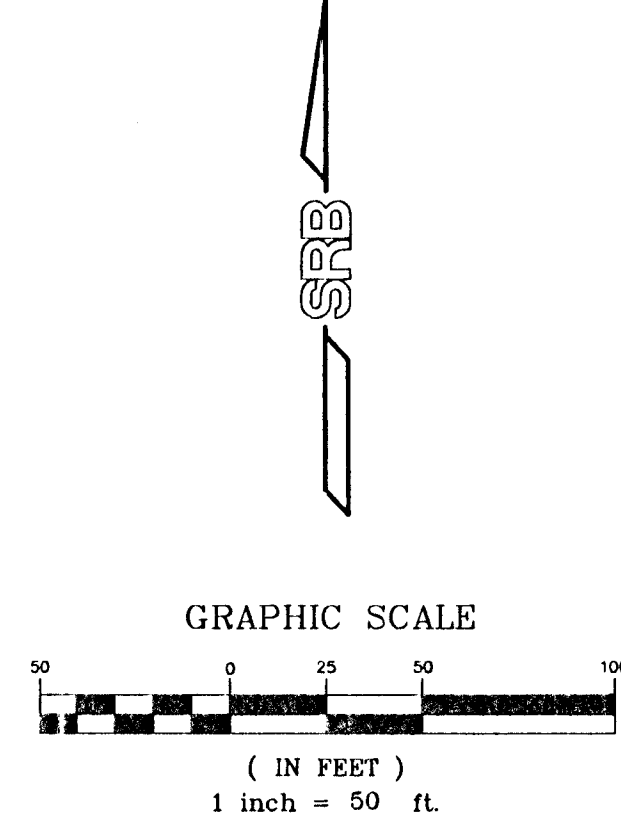
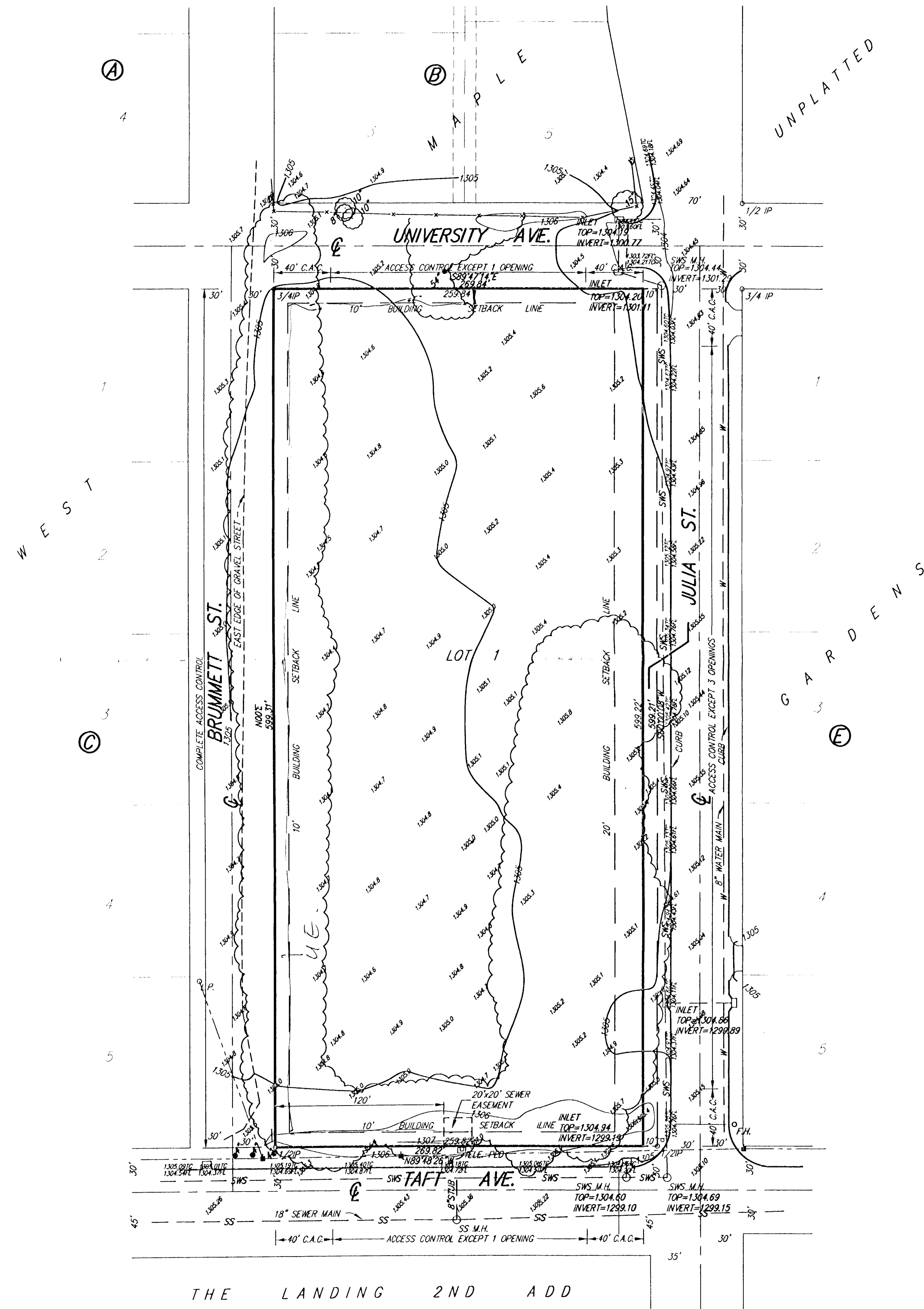
OWNER:

Ernest A. Jordan, Sr., Trustee
of the Doris I. Jordan Trust and of the Ernest A. Jordan, Sr. Trust
32 Friendship Lane
Newton, Kansas 67114

Ph. (316) 283-4079

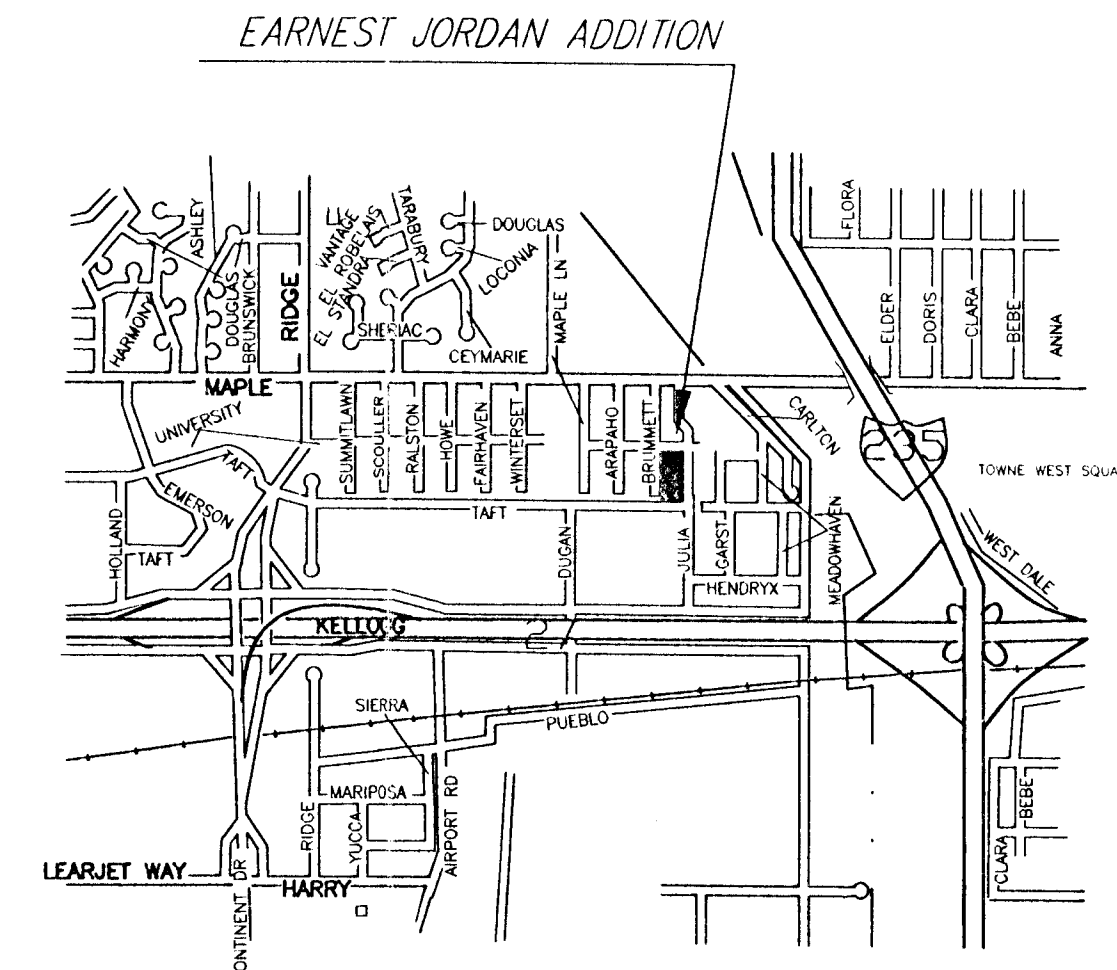
GROSS AREA:

161,696.86 Sq. Ft. ±
3.71 Acres ±



BENCH MARK: CITY OF WICHITA STD DISC
30.6' S. & 52.3' W. OF CENTERLINE INTERSECTION
DUGAN ROAD & TAFT AVE.
ELEV.=1308.40 NGVD

- LEGEND**
- G = GAS MAIN
 - W = WATER MAIN
 - SS = SANITARY SEWER
 - SWS = STORM WATER SEWER
 - UGE = UNDER GROUND ELECTRIC
 - UGT = UNDER GROUND TELEPHONE
 - TELE. PED TELEPHONE PEDESTAL
 - E.B. ELECTRIC BOX
 - G.M. GAS METER
 - W.M. WATER METER
 - W.V. WATER VALVE
 - F.H. FIRE HYDRANT
 - M.W. MONITOR WELL
 - C.O. CLEAN OUT
 - L.P. LIGHT POLE
 - P. POWER POLE
 - H.H. HIGH LINE POLE
 - G.A. GUY ANCHOR
 - S. SIGN
 - G.P. GUARD POST
 - SWS M.H. STORM WATER SEWER MANHOLE
 - SS M.H. SANITARY SEWER MANHOLE



THE LANDING 2ND ADD