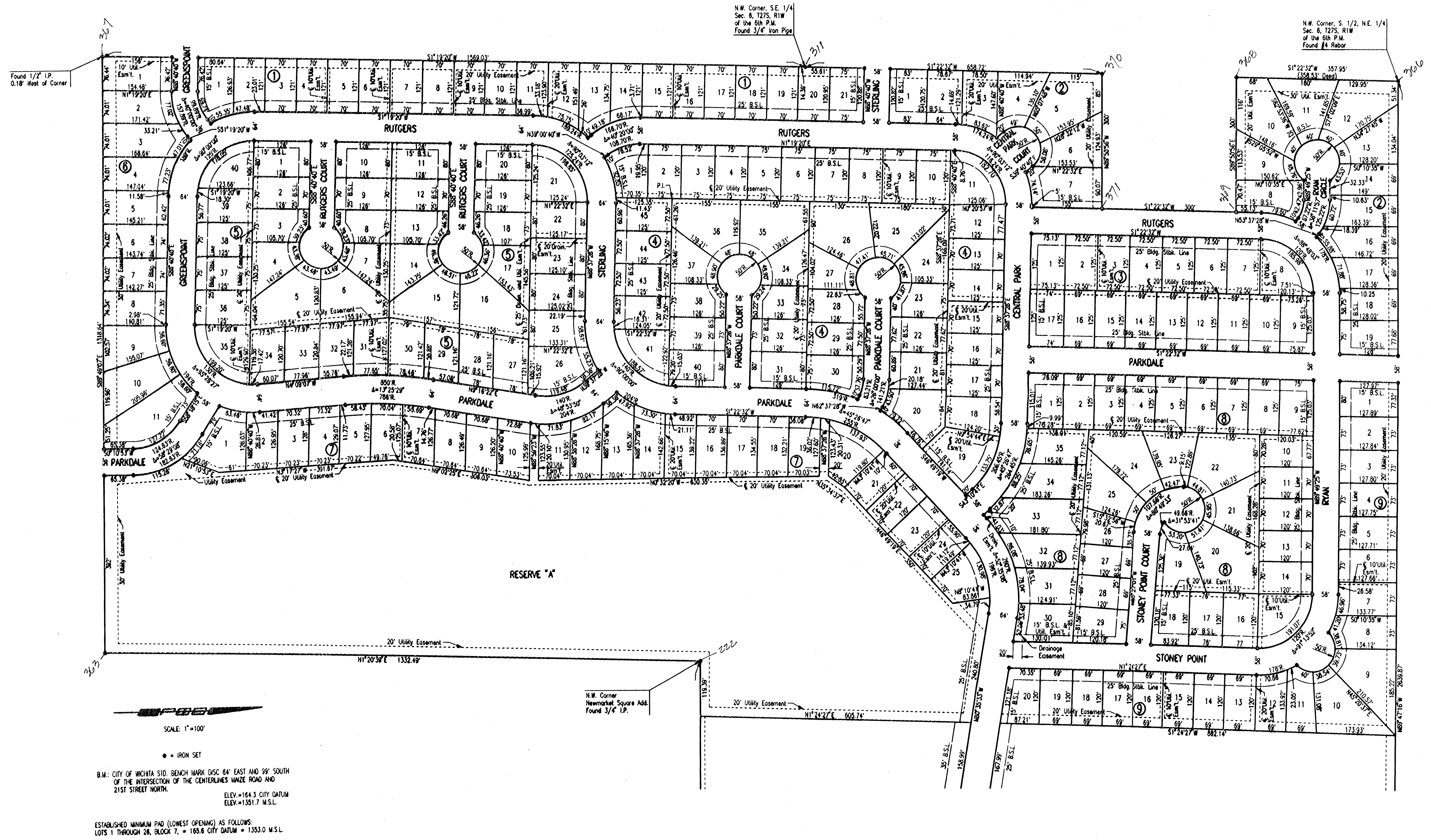


# EVERGREEN

AN ADDITION TO WICHITA, SEDGWICK COUNTY, KANSAS



DSR: SANCHEZ OPER. DEP. SCALE: 1"=100.00  
 G:\1987\97057\FINAL\SH2 08-13-1988 DB04:19 am

SCALE: 1"=100'  
 • = IRON SET  
 B.M.: CITY OF WICHITA STD. BENCH MARK DISC 64' EAST AND 99' SOUTH  
 OF THE INTERSECTION OF THE CENTERLINES MAIZE ROAD AND  
 21ST STREET NORTH.  
 ELEV.=164.3 CITY DATUM  
 ELEV.=1351.7 M.S.L.  
 ESTABLISHED MINIMUM PAD (LOWEST OPENING) AS FOLLOWS:  
 LOTS 1 THROUGH 26, BLOCK 7, = 165.6 CITY DATUM = 1353.0 M.S.L.