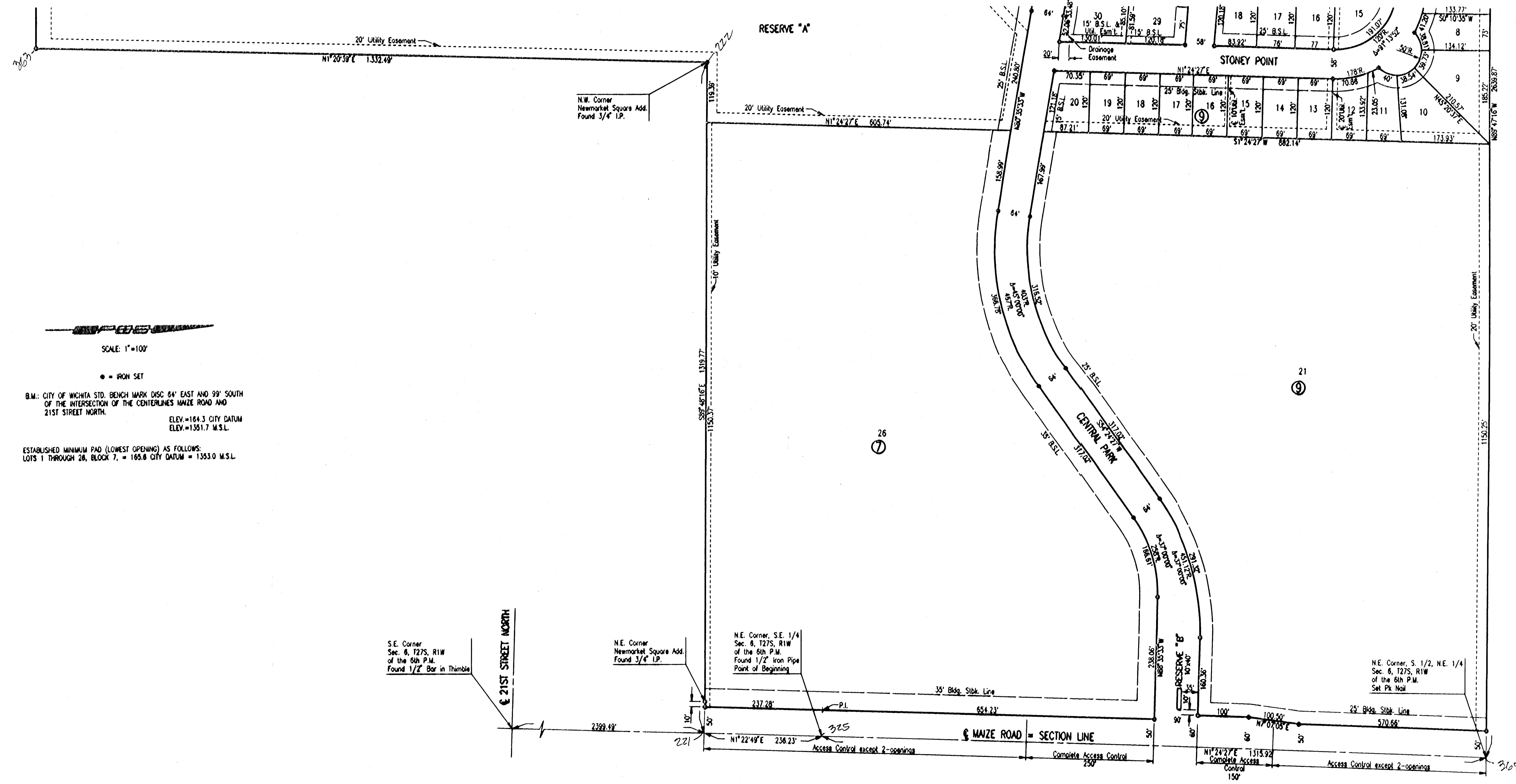


EVERGREEN

AN ADDITION TO WICHITA, SEDGWICK COUNTY, KANSAS



SCALE: 1"=100'

● = IRON SET

B.M.: CITY OF WICHITA STD. BENCH MARK DISC 64' EAST AND 99' SOUTH OF THE INTERSECTION OF THE CENTERLINES MAIZE ROAD AND 21ST STREET NORTH.
ELEV.=164.3 CITY DATUM
ELEV.=1351.7 M.S.L.

ESTABLISHED MINIMUM PAD (LOWEST OPENING) AS FOLLOWS:
LOTS 1 THROUGH 26, BLOCK 7, = 165.0 CITY DATUM = 1353.0 M.S.L.

DSNR: SANCHEZ OPER: DEP SCALE: 1"=100.00
 C:\1997\97637\FINALSH3 08-12-1998 04:19:54 PM