

HMS * Summary of Results for Reservoir-1

Project : Praire Pond Run Name : Run 28

Start of Run : 02Jan04 0000 Basin Model : Basin 2
End of Run : 03Jan04 2400 Met. Model : Met 2
Execution Time : 13Oct04 1031 Control Specs : Control 2

Computed Results

Peak Inflow : 382.49 (cfs) Date/Time of Peak Inflow : 02 Jan 04 1203
Peak Outflow : 183.77 (cfs) Date/Time of Peak Outflow : 02 Jan 04 1215
Total Inflow : 6.55 (in) Peak Storage : 9.6451(ac-ft)
Total Outflow : 5.72 (in) Peak Elevation : 138.61(ft)

Offsite Drainage:

HMS Summary of Results for Subbasin Subbasin-1

Project : Praire Pond Run Name : Run 28 Subbasin : Subbasin-1

Start of Run : 02Jan04 0000 Basin Model : Basin 2
End of Run : 03Jan04 2400 Met. Model : Met 2
Execution Time : 13Oct04 1255 Control Specs : Control 2

Volume Units : Inches Acre-Feet

Computed Results

Peak Discharge :	224.92 (cfs)	Date/Time of Peak Discharge :	02 Jan 04 1205
Peak Stage :			
Total Precipitation :	7.90 (in)	Total Direct Runoff :	5.82 (in)
Total Loss :	2.08 (in)	Total Baseflow :	0.00 (in)
Total Excess :	5.82 (in)	Total Discharge :	5.82 (in)

Print Close

Developed Site:

HMS Summary of Results for Subbasin Subbasin-2

Project : Praire Pond Run Name : Run 28 Subbasin : Subbasin-2

Start of Run : 02Jan04 0000 Basin Model : Basin 2
End of Run : 03Jan04 2400 Met. Model : Met 2
Execution Time : 13Oct04 1255 Control Specs : Control 2

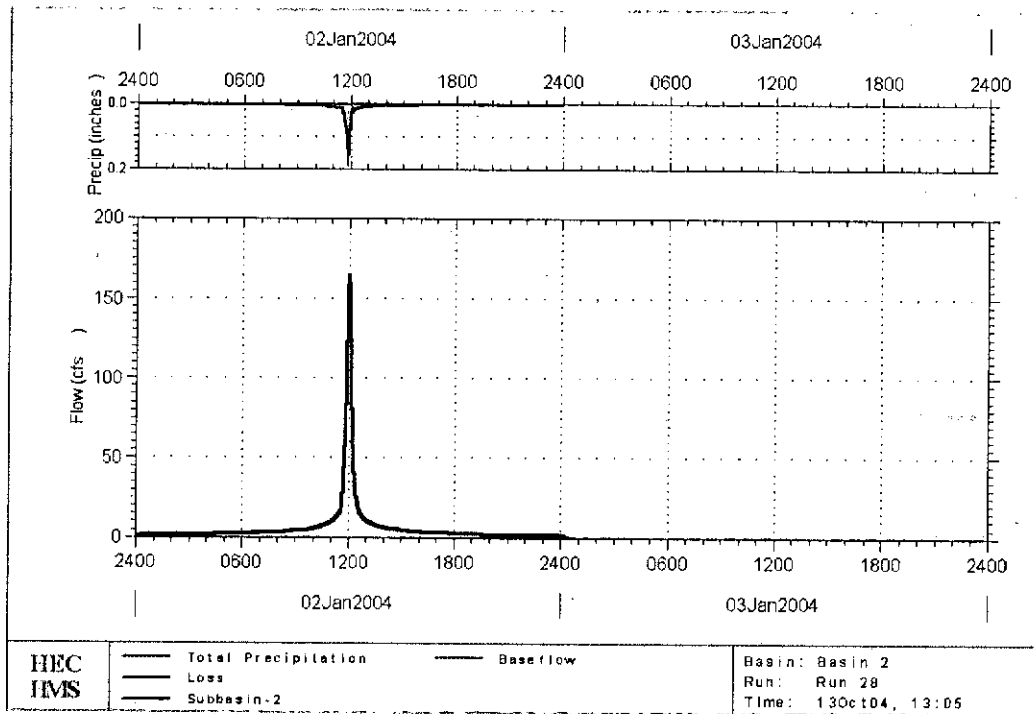
Volume Units : Inches Acre-Feet

Computed Results

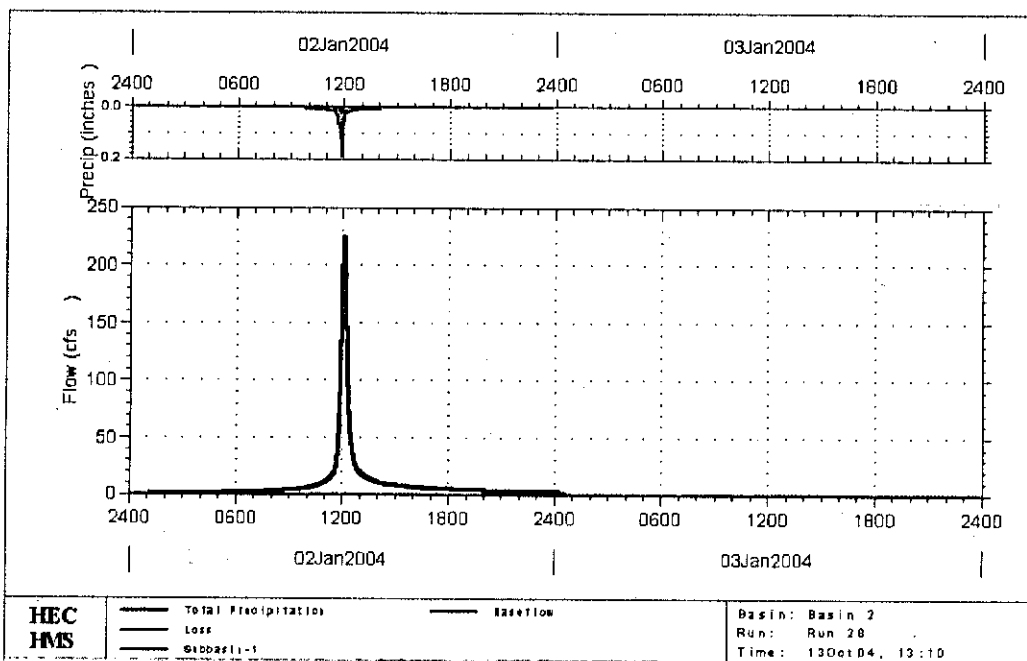
Peak Discharge :	164.34 (cfs)	Date/Time of Peak Discharge :	02 Jan 04 1202
Peak Stage :			
Total Precipitation :	7.90 (in)	Total Direct Runoff :	7.90 (in)
Total Loss :	0.00 (in)	Total Baseflow :	0.00 (in)
Total Excess :	7.90 (in)	Total Discharge :	7.90 (in)

Print Close

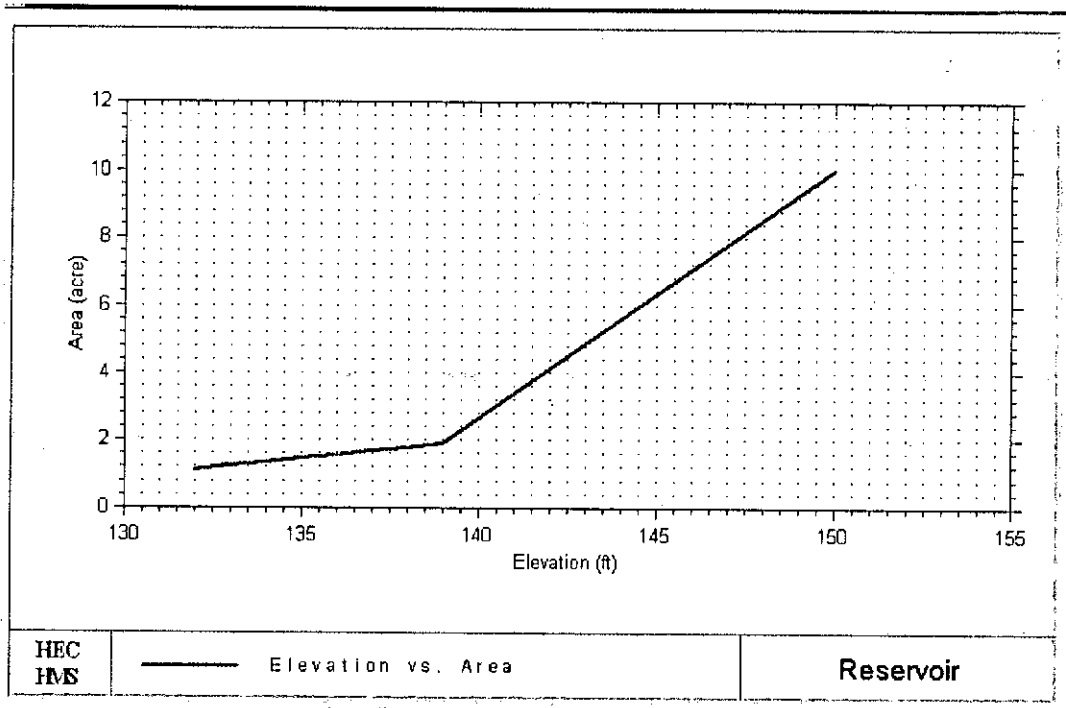
Developed Site:
Flow vs. Time



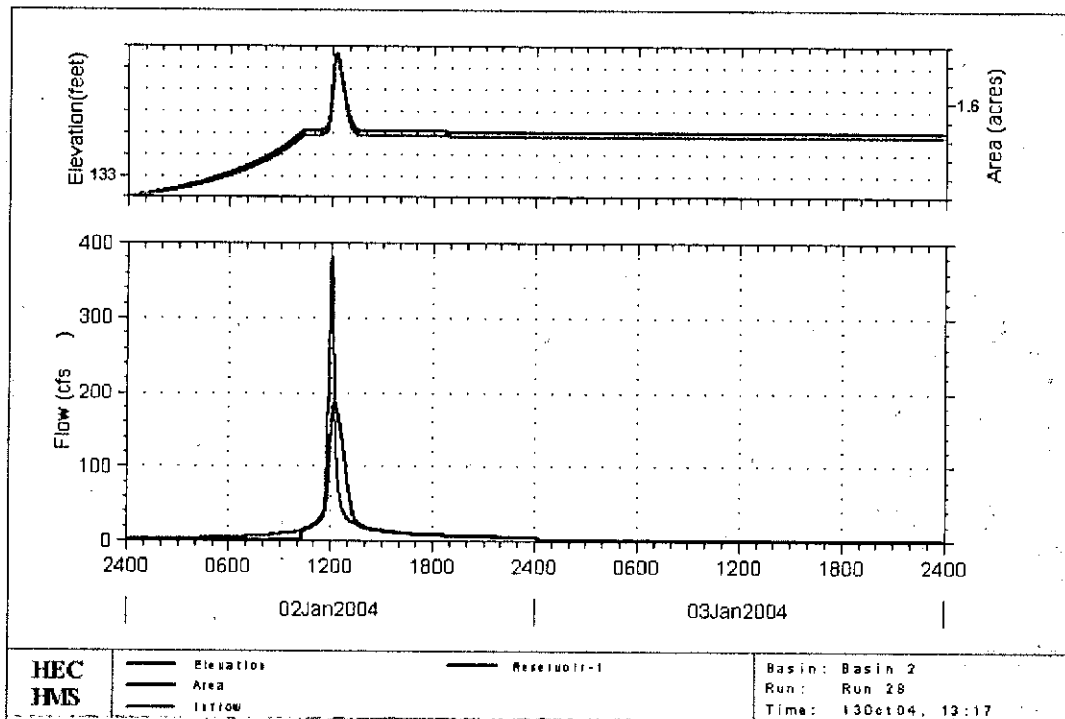
Offsite Drainage:
Flow vs. Time



Pond:
Elevation vs. Area



Inflow vs. Time



HMS * Summary of Results for Reservoir-1

Project : Praire Pond Run Name : Run 28

Start of Run : 02Jan04 0000 Basin Model : Basin 2

End of Run : 03Jan04 2400 Met. Model : Met 2

Execution Time : 13Oct04 1031 Control Specs : Control 2

Date	Time	Reservoir Storage (ac-ft)	Reservoir Elevation (ft)	Inflow (cfs)	Outflow (cfs)
01 Jan 04	2400	0.0000	132.00	0.00	0.00
02 Jan 04	0001	0.0000	132.00	0.00	0.00
02 Jan 04	0002	0.0000	132.00	0.02	0.00
02 Jan 04	0003	0.0001	132.00	0.04	0.00
02 Jan 04	0004	0.0001	132.00	0.08	0.00
02 Jan 04	0005	0.0003	132.00	0.15	0.00
02 Jan 04	0006	0.0006	132.00	0.23	0.00
02 Jan 04	0007	0.0010	132.00	0.34	0.00
02 Jan 04	0008	0.0015	132.00	0.45	0.00
02 Jan 04	0009	0.0022	132.00	0.57	0.00
02 Jan 04	0010	0.0031	132.00	0.69	0.00
02 Jan 04	0011	0.0041	132.00	0.81	0.00
02 Jan 04	0012	0.0053	132.00	0.92	0.00
02 Jan 04	0013	0.0066	132.01	1.02	0.00
02 Jan 04	0014	0.0081	132.01	1.10	0.00
02 Jan 04	0015	0.0097	132.01	1.18	0.00
02 Jan 04	0016	0.0113	132.01	1.23	0.00
02 Jan 04	0017	0.0131	132.01	1.28	0.00
02 Jan 04	0018	0.0148	132.01	1.32	0.00
02 Jan 04	0019	0.0167	132.01	1.36	0.00
02 Jan 04	0020	0.0186	132.02	1.39	0.00
02 Jan 04	0021	0.0205	132.02	1.42	0.00
02 Jan 04	0022	0.0225	132.02	1.45	0.00
02 Jan 04	0023	0.0245	132.02	1.47	0.00
02 Jan 04	0024	0.0265	132.02	1.50	0.00
02 Jan 04	0025	0.0286	132.02	1.53	0.00
02 Jan 04	0026	0.0308	132.03	1.55	0.00
02 Jan 04	0027	0.0329	132.03	1.57	0.00
02 Jan 04	0028	0.0351	132.03	1.59	0.00
02 Jan 04	0029	0.0373	132.03	1.61	0.00
02 Jan 04	0030	0.0395	132.03	1.62	0.00
02 Jan 04	0031	0.0417	132.04	1.62	0.00
02 Jan 04	0032	0.0440	132.04	1.63	0.00
02 Jan 04	0033	0.0462	132.04	1.63	0.00
02 Jan 04	0034	0.0485	132.04	1.63	0.00
02 Jan 04	0035	0.0507	132.04	1.63	0.00
02 Jan 04	0036	0.0530	132.05	1.64	0.00
02 Jan 04	0037	0.0552	132.05	1.65	0.00
02 Jan 04	0038	0.0575	132.05	1.66	0.00
02 Jan 04	0039	0.0598	132.05	1.67	0.00
02 Jan 04	0040	0.0621	132.05	1.68	0.00

Date	Time	Reservoir Storage (ac-ft)	Reservoir Elevation (ft)	Inflow (cfs)	Outflow (cfs)
02 Jan 04	0041	0.0644	132.06	1.68	0.00
02 Jan 04	0042	0.0667	132.06	1.69	0.00
02 Jan 04	0043	0.0691	132.06	1.69	0.00
02 Jan 04	0044	0.0714	132.06	1.69	0.00
02 Jan 04	0045	0.0737	132.06	1.68	0.00
02 Jan 04	0046	0.0760	132.07	1.68	0.00
02 Jan 04	0047	0.0783	132.07	1.68	0.00
02 Jan 04	0048	0.0807	132.07	1.68	0.00
02 Jan 04	0049	0.0830	132.07	1.69	0.00
02 Jan 04	0050	0.0853	132.07	1.70	0.00
02 Jan 04	0051	0.0876	132.08	1.71	0.00
02 Jan 04	0052	0.0900	132.08	1.72	0.00
02 Jan 04	0053	0.0924	132.08	1.73	0.00
02 Jan 04	0054	0.0948	132.08	1.75	0.00
02 Jan 04	0055	0.0972	132.08	1.76	0.00
02 Jan 04	0056	0.0996	132.09	1.77	0.00
02 Jan 04	0057	0.1021	132.09	1.78	0.00
02 Jan 04	0058	0.1045	132.09	1.79	0.00
02 Jan 04	0059	0.1070	132.09	1.79	0.00
02 Jan 04	0100	0.1095	132.10	1.80	0.00
02 Jan 04	0101	0.1119	132.10	1.80	0.00
02 Jan 04	0102	0.1144	132.10	1.81	0.00
02 Jan 04	0103	0.1169	132.10	1.81	0.00
02 Jan 04	0104	0.1194	132.10	1.82	0.00
02 Jan 04	0105	0.1219	132.11	1.82	0.00
02 Jan 04	0106	0.1244	132.11	1.82	0.00
02 Jan 04	0107	0.1269	132.11	1.83	0.00
02 Jan 04	0108	0.1295	132.11	1.83	0.00
02 Jan 04	0109	0.1320	132.11	1.84	0.00
02 Jan 04	0110	0.1345	132.12	1.84	0.00
02 Jan 04	0111	0.1371	132.12	1.84	0.00
02 Jan 04	0112	0.1396	132.12	1.85	0.00
02 Jan 04	0113	0.1421	132.12	1.85	0.00
02 Jan 04	0114	0.1447	132.13	1.85	0.00
02 Jan 04	0115	0.1472	132.13	1.86	0.00
02 Jan 04	0116	0.1498	132.13	1.86	0.00
02 Jan 04	0117	0.1524	132.13	1.86	0.00
02 Jan 04	0118	0.1549	132.13	1.86	0.00
02 Jan 04	0119	0.1575	132.14	1.86	0.00
02 Jan 04	0120	0.1601	132.14	1.87	0.00
02 Jan 04	0121	0.1626	132.14	1.87	0.00
02 Jan 04	0122	0.1652	132.14	1.88	0.00
02 Jan 04	0123	0.1678	132.15	1.89	0.00
02 Jan 04	0124	0.1705	132.15	1.91	0.00
02 Jan 04	0125	0.1731	132.15	1.92	0.00
02 Jan 04	0126	0.1758	132.15	1.94	0.00
02 Jan 04	0127	0.1784	132.16	1.95	0.00
02 Jan 04	0128	0.1811	132.16	1.97	0.00
02 Jan 04	0129	0.1839	132.16	1.98	0.00
02 Jan 04	0130	0.1866	132.16	1.98	0.00
02 Jan 04	0131	0.1893	132.16	1.98	0.00

Date	Time	Reservoir Storage (ac-ft)	Reservoir Elevation (ft)	Inflow (cfs)	Outflow (cfs)
02 Jan 04	0132	0.1920	132.17	1.98	0.00
02 Jan 04	0133	0.1948	132.17	1.98	0.00
02 Jan 04	0134	0.1975	132.17	1.98	0.00
02 Jan 04	0135	0.2002	132.17	1.98	0.00
02 Jan 04	0136	0.2030	132.18	1.99	0.00
02 Jan 04	0137	0.2057	132.18	2.00	0.00
02 Jan 04	0138	0.2085	132.18	2.01	0.00
02 Jan 04	0139	0.2112	132.18	2.01	0.00
02 Jan 04	0140	0.2140	132.19	2.02	0.00
02 Jan 04	0141	0.2168	132.19	2.03	0.00
02 Jan 04	0142	0.2196	132.19	2.03	0.00
02 Jan 04	0143	0.2224	132.19	2.03	0.00
02 Jan 04	0144	0.2252	132.20	2.03	0.00
02 Jan 04	0145	0.2280	132.20	2.03	0.00
02 Jan 04	0146	0.2308	132.20	2.03	0.00
02 Jan 04	0147	0.2336	132.20	2.03	0.00
02 Jan 04	0148	0.2364	132.21	2.03	0.00
02 Jan 04	0149	0.2392	132.21	2.03	0.00
02 Jan 04	0150	0.2420	132.21	2.04	0.00
02 Jan 04	0151	0.2448	132.21	2.06	0.00
02 Jan 04	0152	0.2476	132.22	2.07	0.00
02 Jan 04	0153	0.2505	132.22	2.08	0.00
02 Jan 04	0154	0.2534	132.22	2.10	0.00
02 Jan 04	0155	0.2563	132.22	2.11	0.00
02 Jan 04	0156	0.2592	132.23	2.12	0.00
02 Jan 04	0157	0.2621	132.23	2.13	0.00
02 Jan 04	0158	0.2650	132.23	2.14	0.00
02 Jan 04	0159	0.2680	132.23	2.15	0.00
02 Jan 04	0200	0.2710	132.24	2.15	0.00
02 Jan 04	0201	0.2739	132.24	2.16	0.00
02 Jan 04	0202	0.2769	132.24	2.16	0.00
02 Jan 04	0203	0.2799	132.24	2.17	0.00
02 Jan 04	0204	0.2829	132.25	2.17	0.00
02 Jan 04	0205	0.2859	132.25	2.18	0.00
02 Jan 04	0206	0.2889	132.25	2.18	0.00
02 Jan 04	0207	0.2919	132.25	2.19	0.00
02 Jan 04	0208	0.2949	132.26	2.19	0.00
02 Jan 04	0209	0.2979	132.26	2.19	0.00
02 Jan 04	0210	0.3009	132.26	2.20	0.00
02 Jan 04	0211	0.3040	132.26	2.20	0.00
02 Jan 04	0212	0.3070	132.27	2.20	0.00
02 Jan 04	0213	0.3100	132.27	2.21	0.00
02 Jan 04	0214	0.3131	132.27	2.21	0.00
02 Jan 04	0215	0.3161	132.27	2.22	0.00
02 Jan 04	0216	0.3192	132.28	2.23	0.00
02 Jan 04	0217	0.3223	132.28	2.24	0.00
02 Jan 04	0218	0.3254	132.28	2.25	0.00
02 Jan 04	0219	0.3285	132.29	2.27	0.00
02 Jan 04	0220	0.3316	132.29	2.29	0.00
02 Jan 04	0221	0.3348	132.29	2.30	0.00
02 Jan 04	0222	0.3379	132.29	2.32	0.00

Date	Time	Reservoir Storage (ac-ft)	Reservoir Elevation (ft)	Inflow (cfs)	Outflow (cfs)
02 Jan 04	0223	0.3411	132.30	2.33	0.00
02 Jan 04	0224	0.3444	132.30	2.34	0.00
02 Jan 04	0225	0.3476	132.30	2.34	0.00
02 Jan 04	0226	0.3508	132.31	2.34	0.00
02 Jan 04	0227	0.3540	132.31	2.34	0.00
02 Jan 04	0228	0.3572	132.31	2.33	0.00
02 Jan 04	0229	0.3604	132.31	2.32	0.00
02 Jan 04	0230	0.3636	132.32	2.32	0.00
02 Jan 04	0231	0.3668	132.32	2.31	0.00
02 Jan 04	0232	0.3700	132.32	2.31	0.00
02 Jan 04	0233	0.3732	132.32	2.31	0.00
02 Jan 04	0234	0.3764	132.33	2.31	0.00
02 Jan 04	0235	0.3795	132.33	2.32	0.00
02 Jan 04	0236	0.3827	132.33	2.33	0.00
02 Jan 04	0237	0.3860	132.34	2.34	0.00
02 Jan 04	0238	0.3892	132.34	2.36	0.00
02 Jan 04	0239	0.3925	132.34	2.37	0.00
02 Jan 04	0240	0.3957	132.34	2.38	0.00
02 Jan 04	0241	0.3990	132.35	2.39	0.00
02 Jan 04	0242	0.4023	132.35	2.40	0.00
02 Jan 04	0243	0.4056	132.35	2.40	0.00
02 Jan 04	0244	0.4089	132.36	2.40	0.00
02 Jan 04	0245	0.4122	132.36	2.40	0.00
02 Jan 04	0246	0.4155	132.36	2.40	0.00
02 Jan 04	0247	0.4188	132.36	2.40	0.00
02 Jan 04	0248	0.4221	132.37	2.40	0.00
02 Jan 04	0249	0.4255	132.37	2.41	0.00
02 Jan 04	0250	0.4288	132.37	2.42	0.00
02 Jan 04	0251	0.4321	132.38	2.43	0.00
02 Jan 04	0252	0.4355	132.38	2.45	0.00
02 Jan 04	0253	0.4389	132.38	2.46	0.00
02 Jan 04	0254	0.4423	132.38	2.48	0.00
02 Jan 04	0255	0.4457	132.39	2.49	0.00
02 Jan 04	0256	0.4491	132.39	2.50	0.00
02 Jan 04	0257	0.4526	132.39	2.51	0.00
02 Jan 04	0258	0.4560	132.40	2.52	0.00
02 Jan 04	0259	0.4595	132.40	2.53	0.00
02 Jan 04	0300	0.4630	132.40	2.54	0.00
02 Jan 04	0301	0.4665	132.41	2.54	0.00
02 Jan 04	0302	0.4700	132.41	2.55	0.00
02 Jan 04	0303	0.4735	132.41	2.55	0.00
02 Jan 04	0304	0.4771	132.41	2.56	0.00
02 Jan 04	0305	0.4806	132.42	2.57	0.00
02 Jan 04	0306	0.4841	132.42	2.57	0.00
02 Jan 04	0307	0.4877	132.42	2.58	0.00
02 Jan 04	0308	0.4912	132.43	2.58	0.00
02 Jan 04	0309	0.4948	132.43	2.59	0.00
02 Jan 04	0310	0.4983	132.43	2.59	0.00
02 Jan 04	0311	0.5019	132.44	2.59	0.00
02 Jan 04	0312	0.5055	132.44	2.60	0.00
02 Jan 04	0313	0.5091	132.44	2.60	0.00

Date	Time	Reservoir Storage (ac-ft)	Reservoir Elevation (ft)	Inflow (cfs)	Outflow (cfs)
02 Jan 04	0314	0.5127	132.45	2.61	0.00
02 Jan 04	0315	0.5163	132.45	2.61	0.00
02 Jan 04	0316	0.5198	132.45	2.61	0.00
02 Jan 04	0317	0.5234	132.46	2.61	0.00
02 Jan 04	0318	0.5271	132.46	2.62	0.00
02 Jan 04	0319	0.5307	132.46	2.62	0.00
02 Jan 04	0320	0.5343	132.46	2.62	0.00
02 Jan 04	0321	0.5379	132.47	2.63	0.00
02 Jan 04	0322	0.5415	132.47	2.64	0.00
02 Jan 04	0323	0.5452	132.47	2.65	0.00
02 Jan 04	0324	0.5488	132.48	2.67	0.00
02 Jan 04	0325	0.5525	132.48	2.68	0.00
02 Jan 04	0326	0.5562	132.48	2.70	0.00
02 Jan 04	0327	0.5600	132.49	2.72	0.00
02 Jan 04	0328	0.5637	132.49	2.73	0.00
02 Jan 04	0329	0.5675	132.49	2.74	0.00
02 Jan 04	0330	0.5713	132.50	2.75	0.00
02 Jan 04	0331	0.5751	132.50	2.75	0.00
02 Jan 04	0332	0.5788	132.50	2.75	0.00
02 Jan 04	0333	0.5826	132.51	2.75	0.00
02 Jan 04	0334	0.5864	132.51	2.75	0.00
02 Jan 04	0335	0.5902	132.51	2.76	0.00
02 Jan 04	0336	0.5940	132.52	2.76	0.00
02 Jan 04	0337	0.5978	132.52	2.77	0.00
02 Jan 04	0338	0.6017	132.52	2.78	0.00
02 Jan 04	0339	0.6055	132.53	2.79	0.00
02 Jan 04	0340	0.6093	132.53	2.81	0.00
02 Jan 04	0341	0.6132	132.53	2.83	0.00
02 Jan 04	0342	0.6171	132.54	2.84	0.00
02 Jan 04	0343	0.6211	132.54	2.86	0.00
02 Jan 04	0344	0.6250	132.54	2.87	0.00
02 Jan 04	0345	0.6290	132.55	2.88	0.00
02 Jan 04	0346	0.6329	132.55	2.89	0.00
02 Jan 04	0347	0.6369	132.55	2.89	0.00
02 Jan 04	0348	0.6409	132.56	2.88	0.00
02 Jan 04	0349	0.6449	132.56	2.88	0.00
02 Jan 04	0350	0.6488	132.56	2.87	0.00
02 Jan 04	0351	0.6528	132.57	2.86	0.00
02 Jan 04	0352	0.6567	132.57	2.85	0.00
02 Jan 04	0353	0.6606	132.57	2.85	0.00
02 Jan 04	0354	0.6645	132.58	2.85	0.00
02 Jan 04	0355	0.6685	132.58	2.85	0.00
02 Jan 04	0356	0.6724	132.58	2.86	0.00
02 Jan 04	0357	0.6764	132.59	2.87	0.00
02 Jan 04	0358	0.6803	132.59	2.88	0.00
02 Jan 04	0359	0.6843	132.60	2.90	0.00
02 Jan 04	0400	0.6883	132.60	2.91	0.00
02 Jan 04	0401	0.6923	132.60	2.93	0.00
02 Jan 04	0402	0.6964	132.61	2.94	0.00
02 Jan 04	0403	0.7004	132.61	2.95	0.00
02 Jan 04	0404	0.7045	132.61	2.96	0.00

Date	Time	Reservoir Storage (ac-ft)	Reservoir Elevation (ft)	Inflow (cfs)	Outflow (cfs)
02 Jan 04	0405	0.7086	132.62	2.97	0.00
02 Jan 04	0406	0.7127	132.62	2.97	0.00
02 Jan 04	0407	0.7168	132.62	2.98	0.00
02 Jan 04	0408	0.7209	132.63	2.99	0.00
02 Jan 04	0409	0.7250	132.63	2.99	0.00
02 Jan 04	0410	0.7291	132.63	3.00	0.00
02 Jan 04	0411	0.7332	132.64	3.00	0.00
02 Jan 04	0412	0.7374	132.64	3.01	0.00
02 Jan 04	0413	0.7415	132.65	3.01	0.00
02 Jan 04	0414	0.7457	132.65	3.02	0.00
02 Jan 04	0415	0.7498	132.65	3.02	0.00
02 Jan 04	0416	0.7540	132.66	3.03	0.00
02 Jan 04	0417	0.7582	132.66	3.04	0.00
02 Jan 04	0418	0.7624	132.66	3.06	0.00
02 Jan 04	0419	0.7666	132.67	3.08	0.00
02 Jan 04	0420	0.7709	132.67	3.09	0.00
02 Jan 04	0421	0.7751	132.67	3.12	0.00
02 Jan 04	0422	0.7795	132.68	3.14	0.00
02 Jan 04	0423	0.7838	132.68	3.16	0.00
02 Jan 04	0424	0.7882	132.69	3.18	0.00
02 Jan 04	0425	0.7925	132.69	3.20	0.00
02 Jan 04	0426	0.7970	132.69	3.21	0.00
02 Jan 04	0427	0.8014	132.70	3.23	0.00
02 Jan 04	0428	0.8059	132.70	3.24	0.00
02 Jan 04	0429	0.8103	132.70	3.26	0.00
02 Jan 04	0430	0.8148	132.71	3.27	0.00
02 Jan 04	0431	0.8193	132.71	3.28	0.00
02 Jan 04	0432	0.8239	132.72	3.28	0.00
02 Jan 04	0433	0.8284	132.72	3.29	0.00
02 Jan 04	0434	0.8329	132.72	3.30	0.00
02 Jan 04	0435	0.8375	132.73	3.31	0.00
02 Jan 04	0436	0.8420	132.73	3.31	0.00
02 Jan 04	0437	0.8466	132.74	3.32	0.00
02 Jan 04	0438	0.8512	132.74	3.32	0.00
02 Jan 04	0439	0.8558	132.74	3.33	0.00
02 Jan 04	0440	0.8603	132.75	3.34	0.00
02 Jan 04	0441	0.8649	132.75	3.34	0.00
02 Jan 04	0442	0.8695	132.76	3.35	0.00
02 Jan 04	0443	0.8742	132.76	3.35	0.00
02 Jan 04	0444	0.8788	132.76	3.35	0.00
02 Jan 04	0445	0.8834	132.77	3.36	0.00
02 Jan 04	0446	0.8880	132.77	3.36	0.00
02 Jan 04	0447	0.8927	132.78	3.37	0.00
02 Jan 04	0448	0.8973	132.78	3.37	0.00
02 Jan 04	0449	0.9019	132.78	3.37	0.00
02 Jan 04	0450	0.9066	132.79	3.38	0.00
02 Jan 04	0451	0.9112	132.79	3.38	0.00
02 Jan 04	0452	0.9159	132.80	3.39	0.00
02 Jan 04	0453	0.9206	132.80	3.40	0.00
02 Jan 04	0454	0.9253	132.80	3.42	0.00
02 Jan 04	0455	0.9300	132.81	3.44	0.00

Date	Time	Reservoir Storage (ac-ft)	Reservoir Elevation (ft)	Inflow (cfs)	Outflow (cfs)
02 Jan 04	0456	0.9348	132.81	3.46	0.00
02 Jan 04	0457	0.9395	132.82	3.48	0.00
02 Jan 04	0458	0.9444	132.82	3.50	0.00
02 Jan 04	0459	0.9492	132.83	3.52	0.00
02 Jan 04	0500	0.9541	132.83	3.55	0.00
02 Jan 04	0501	0.9590	132.83	3.56	0.00
02 Jan 04	0502	0.9639	132.84	3.58	0.00
02 Jan 04	0503	0.9688	132.84	3.60	0.00
02 Jan 04	0504	0.9738	132.85	3.61	0.00
02 Jan 04	0505	0.9788	132.85	3.62	0.00
02 Jan 04	0506	0.9838	132.86	3.63	0.00
02 Jan 04	0507	0.9888	132.86	3.64	0.00
02 Jan 04	0508	0.9938	132.86	3.65	0.00
02 Jan 04	0509	0.9988	132.87	3.66	0.00
02 Jan 04	0510	1.0039	132.87	3.67	0.00
02 Jan 04	0511	1.0089	132.88	3.67	0.00
02 Jan 04	0512	1.0140	132.88	3.68	0.00
02 Jan 04	0513	1.0191	132.89	3.69	0.00
02 Jan 04	0514	1.0242	132.89	3.69	0.00
02 Jan 04	0515	1.0292	132.90	3.70	0.00
02 Jan 04	0516	1.0343	132.90	3.71	0.00
02 Jan 04	0517	1.0395	132.90	3.73	0.00
02 Jan 04	0518	1.0446	132.91	3.74	0.00
02 Jan 04	0519	1.0498	132.91	3.76	0.00
02 Jan 04	0520	1.0550	132.92	3.78	0.00
02 Jan 04	0521	1.0602	132.92	3.80	0.00
02 Jan 04	0522	1.0655	132.93	3.83	0.00
02 Jan 04	0523	1.0707	132.93	3.85	0.00
02 Jan 04	0524	1.0761	132.94	3.88	0.00
02 Jan 04	0525	1.0814	132.94	3.90	0.00
02 Jan 04	0526	1.0868	132.95	3.92	0.00
02 Jan 04	0527	1.0922	132.95	3.93	0.00
02 Jan 04	0528	1.0976	132.95	3.94	0.00
02 Jan 04	0529	1.1031	132.96	3.94	0.00
02 Jan 04	0530	1.1085	132.96	3.94	0.00
02 Jan 04	0531	1.1139	132.97	3.93	0.00
02 Jan 04	0532	1.1193	132.97	3.93	0.00
02 Jan 04	0533	1.1247	132.98	3.92	0.00
02 Jan 04	0534	1.1301	132.98	3.92	0.00
02 Jan 04	0535	1.1355	132.99	3.93	0.00
02 Jan 04	0536	1.1409	132.99	3.94	0.00
02 Jan 04	0537	1.1464	133.00	3.96	0.00
02 Jan 04	0538	1.1519	133.00	3.99	0.00
02 Jan 04	0539	1.1574	133.01	4.02	0.00
02 Jan 04	0540	1.1629	133.01	4.04	0.00
02 Jan 04	0541	1.1685	133.02	4.07	0.00
02 Jan 04	0542	1.1741	133.02	4.09	0.00
02 Jan 04	0543	1.1798	133.02	4.11	0.00
02 Jan 04	0544	1.1855	133.03	4.12	0.00
02 Jan 04	0545	1.1911	133.03	4.13	0.00
02 Jan 04	0546	1.1968	133.04	4.13	0.00

Date	Time	Reservoir Storage (ac-ft)	Reservoir Elevation (ft)	Inflow (cfs)	Outflow (cfs)
02 Jan 04	0547	1.2025	133.04	4.13	0.00
02 Jan 04	0548	1.2082	133.05	4.13	0.00
02 Jan 04	0549	1.2139	133.05	4.13	0.00
02 Jan 04	0550	1.2196	133.06	4.13	0.00
02 Jan 04	0551	1.2252	133.06	4.13	0.00
02 Jan 04	0552	1.2309	133.06	4.13	0.00
02 Jan 04	0553	1.2366	133.07	4.14	0.00
02 Jan 04	0554	1.2423	133.07	4.16	0.00
02 Jan 04	0555	1.2481	133.08	4.17	0.00
02 Jan 04	0556	1.2538	133.08	4.19	0.00
02 Jan 04	0557	1.2596	133.09	4.21	0.00
02 Jan 04	0558	1.2654	133.09	4.24	0.00
02 Jan 04	0559	1.2713	133.10	4.26	0.00
02 Jan 04	0600	1.2772	133.10	4.28	0.00
02 Jan 04	0601	1.2831	133.11	4.30	0.00
02 Jan 04	0602	1.2890	133.11	4.32	0.00
02 Jan 04	0603	1.2950	133.12	4.33	0.00
02 Jan 04	0604	1.3010	133.12	4.35	0.00
02 Jan 04	0605	1.3070	133.13	4.36	0.00
02 Jan 04	0606	1.3130	133.13	4.37	0.00
02 Jan 04	0607	1.3190	133.14	4.38	0.00
02 Jan 04	0608	1.3251	133.14	4.39	0.00
02 Jan 04	0609	1.3311	133.14	4.40	0.00
02 Jan 04	0610	1.3372	133.15	4.41	0.00
02 Jan 04	0611	1.3433	133.15	4.42	0.00
02 Jan 04	0612	1.3494	133.16	4.42	0.00
02 Jan 04	0613	1.3555	133.16	4.43	0.00
02 Jan 04	0614	1.3616	133.17	4.44	0.00
02 Jan 04	0615	1.3677	133.17	4.45	0.00
02 Jan 04	0616	1.3738	133.18	4.46	0.00
02 Jan 04	0617	1.3800	133.18	4.47	0.00
02 Jan 04	0618	1.3861	133.19	4.49	0.00
02 Jan 04	0619	1.3923	133.19	4.51	0.00
02 Jan 04	0620	1.3986	133.20	4.53	0.00
02 Jan 04	0621	1.4048	133.20	4.56	0.00
02 Jan 04	0622	1.4111	133.21	4.58	0.00
02 Jan 04	0623	1.4174	133.21	4.61	0.00
02 Jan 04	0624	1.4238	133.22	4.63	0.00
02 Jan 04	0625	1.4302	133.22	4.66	0.00
02 Jan 04	0626	1.4366	133.23	4.68	0.00
02 Jan 04	0627	1.4431	133.23	4.69	0.00
02 Jan 04	0628	1.4495	133.24	4.70	0.00
02 Jan 04	0629	1.4560	133.24	4.70	0.00
02 Jan 04	0630	1.4625	133.25	4.70	0.00
02 Jan 04	0631	1.4690	133.25	4.70	0.00
02 Jan 04	0632	1.4754	133.26	4.69	0.00
02 Jan 04	0633	1.4819	133.26	4.69	0.00
02 Jan 04	0634	1.4884	133.27	4.69	0.00
02 Jan 04	0635	1.4948	133.28	4.70	0.00
02 Jan 04	0636	1.5013	133.28	4.71	0.00
02 Jan 04	0637	1.5078	133.29	4.73	0.00

Date	Time	Reservoir Storage (ac-ft)	Reservoir Elevation (ft)	Inflow (cfs)	Outflow (cfs)
02 Jan 04	0638	1.5144	133.29	4.76	0.00
02 Jan 04	0639	1.5209	133.30	4.79	0.00
02 Jan 04	0640	1.5275	133.30	4.82	0.00
02 Jan 04	0641	1.5342	133.31	4.85	0.00
02 Jan 04	0642	1.5409	133.31	4.87	0.00
02 Jan 04	0643	1.5476	133.32	4.89	0.00
02 Jan 04	0644	1.5543	133.32	4.90	0.00
02 Jan 04	0645	1.5611	133.33	4.91	0.00
02 Jan 04	0646	1.5679	133.33	4.91	0.00
02 Jan 04	0647	1.5746	133.34	4.91	0.00
02 Jan 04	0648	1.5814	133.34	4.91	0.00
02 Jan 04	0649	1.5882	133.35	4.91	0.00
02 Jan 04	0650	1.5949	133.35	4.91	0.00
02 Jan 04	0651	1.6017	133.36	4.91	0.00
02 Jan 04	0652	1.6084	133.37	4.92	0.00
02 Jan 04	0653	1.6152	133.37	4.93	0.00
02 Jan 04	0654	1.6220	133.38	4.94	0.00
02 Jan 04	0655	1.6288	133.38	4.96	0.00
02 Jan 04	0656	1.6357	133.39	4.98	0.00
02 Jan 04	0657	1.6425	133.39	5.00	0.00
02 Jan 04	0658	1.6494	133.40	5.02	0.00
02 Jan 04	0659	1.6564	133.40	5.05	0.00
02 Jan 04	0700	1.6633	133.41	5.07	0.00
02 Jan 04	0701	1.6703	133.42	5.09	0.00
02 Jan 04	0702	1.6774	133.42	5.11	0.00
02 Jan 04	0703	1.6844	133.43	5.13	0.00
02 Jan 04	0704	1.6915	133.43	5.14	0.00
02 Jan 04	0705	1.6986	133.44	5.16	0.00
02 Jan 04	0706	1.7057	133.44	5.17	0.00
02 Jan 04	0707	1.7128	133.45	5.18	0.00
02 Jan 04	0708	1.7200	133.45	5.19	0.00
02 Jan 04	0709	1.7271	133.46	5.20	0.00
02 Jan 04	0710	1.7343	133.47	5.21	0.00
02 Jan 04	0711	1.7415	133.47	5.22	0.00
02 Jan 04	0712	1.7487	133.48	5.23	0.00
02 Jan 04	0713	1.7559	133.48	5.24	0.00
02 Jan 04	0714	1.7631	133.49	5.25	0.00
02 Jan 04	0715	1.7704	133.49	5.25	0.00
02 Jan 04	0716	1.7776	133.50	5.26	0.00
02 Jan 04	0717	1.7849	133.51	5.27	0.00
02 Jan 04	0718	1.7921	133.51	5.29	0.00
02 Jan 04	0719	1.7994	133.52	5.31	0.00
02 Jan 04	0720	1.8068	133.52	5.33	0.00
02 Jan 04	0721	1.8141	133.53	5.36	0.00
02 Jan 04	0722	1.8215	133.54	5.39	0.00
02 Jan 04	0723	1.8290	133.54	5.42	0.00
02 Jan 04	0724	1.8365	133.55	5.46	0.00
02 Jan 04	0725	1.8440	133.55	5.48	0.00
02 Jan 04	0726	1.8516	133.56	5.51	0.00
02 Jan 04	0727	1.8592	133.57	5.53	0.00
02 Jan 04	0728	1.8668	133.57	5.54	0.00

Date	Time	Reservoir Storage (ac-ft)	Reservoir Elevation (ft)	Inflow (cfs)	Outflow (cfs)
02 Jan 04	0729	1.8744	133.58	5.55	0.00
02 Jan 04	0730	1.8821	133.58	5.55	0.00
02 Jan 04	0731	1.8897	133.59	5.55	0.00
02 Jan 04	0732	1.8974	133.60	5.56	0.00
02 Jan 04	0733	1.9050	133.60	5.56	0.00
02 Jan 04	0734	1.9127	133.61	5.57	0.00
02 Jan 04	0735	1.9204	133.61	5.58	0.00
02 Jan 04	0736	1.9280	133.62	5.59	0.00
02 Jan 04	0737	1.9357	133.63	5.60	0.00
02 Jan 04	0738	1.9435	133.63	5.61	0.00
02 Jan 04	0739	1.9512	133.64	5.63	0.00
02 Jan 04	0740	1.9590	133.65	5.65	0.00
02 Jan 04	0741	1.9668	133.65	5.67	0.00
02 Jan 04	0742	1.9746	133.66	5.69	0.00
02 Jan 04	0743	1.9824	133.66	5.70	0.00
02 Jan 04	0744	1.9903	133.67	5.71	0.00
02 Jan 04	0745	1.9982	133.68	5.71	0.00
02 Jan 04	0746	2.0060	133.68	5.72	0.00
02 Jan 04	0747	2.0139	133.69	5.71	0.00
02 Jan 04	0748	2.0218	133.70	5.71	0.00
02 Jan 04	0749	2.0296	133.70	5.71	0.00
02 Jan 04	0750	2.0375	133.71	5.71	0.00
02 Jan 04	0751	2.0453	133.71	5.71	0.00
02 Jan 04	0752	2.0532	133.72	5.72	0.00
02 Jan 04	0753	2.0611	133.73	5.74	0.00
02 Jan 04	0754	2.0690	133.73	5.76	0.00
02 Jan 04	0755	2.0770	133.74	5.78	0.00
02 Jan 04	0756	2.0850	133.75	5.81	0.00
02 Jan 04	0757	2.0930	133.75	5.84	0.00
02 Jan 04	0758	2.1010	133.76	5.86	0.00
02 Jan 04	0759	2.1091	133.76	5.89	0.00
02 Jan 04	0800	2.1173	133.77	5.91	0.00
02 Jan 04	0801	2.1254	133.78	5.94	0.00
02 Jan 04	0802	2.1336	133.78	5.96	0.00
02 Jan 04	0803	2.1418	133.79	5.97	0.00
02 Jan 04	0804	2.1501	133.80	5.99	0.00
02 Jan 04	0805	2.1583	133.80	6.00	0.00
02 Jan 04	0806	2.1666	133.81	6.01	0.00
02 Jan 04	0807	2.1749	133.82	6.02	0.00
02 Jan 04	0808	2.1832	133.82	6.03	0.00
02 Jan 04	0809	2.1915	133.83	6.05	0.00
02 Jan 04	0810	2.1998	133.84	6.07	0.00
02 Jan 04	0811	2.2082	133.84	6.10	0.00
02 Jan 04	0812	2.2167	133.85	6.14	0.00
02 Jan 04	0813	2.2251	133.86	6.18	0.00
02 Jan 04	0814	2.2337	133.86	6.23	0.00
02 Jan 04	0815	2.2423	133.87	6.28	0.00
02 Jan 04	0816	2.2510	133.88	6.33	0.00
02 Jan 04	0817	2.2597	133.88	6.37	0.00
02 Jan 04	0818	2.2685	133.89	6.42	0.00
02 Jan 04	0819	2.2774	133.90	6.46	0.00

Date	Time	Reservoir Storage (ac-ft)	Reservoir Elevation (ft)	Inflow (cfs)	Outflow (cfs)
02 Jan 04	0820	2.2863	133.91	6.50	0.00
02 Jan 04	0821	2.2953	133.91	6.55	0.00
02 Jan 04	0822	2.3044	133.92	6.59	0.00
02 Jan 04	0823	2.3135	133.93	6.63	0.00
02 Jan 04	0824	2.3226	133.93	6.68	0.00
02 Jan 04	0825	2.3319	133.94	6.73	0.00
02 Jan 04	0826	2.3412	133.95	6.79	0.00
02 Jan 04	0827	2.3506	133.96	6.85	0.00
02 Jan 04	0828	2.3601	133.96	6.90	0.00
02 Jan 04	0829	2.3696	133.97	6.95	0.00
02 Jan 04	0830	2.3792	133.98	7.01	0.00
02 Jan 04	0831	2.3889	133.99	7.06	0.00
02 Jan 04	0832	2.3986	134.00	7.11	0.00
02 Jan 04	0833	2.4085	134.00	7.15	0.00
02 Jan 04	0834	2.4184	134.01	7.20	0.00
02 Jan 04	0835	2.4283	134.02	7.25	0.00
02 Jan 04	0836	2.4383	134.02	7.30	0.00
02 Jan 04	0837	2.4484	134.03	7.35	0.00
02 Jan 04	0838	2.4586	134.04	7.41	0.00
02 Jan 04	0839	2.4688	134.05	7.47	0.00
02 Jan 04	0840	2.4791	134.05	7.53	0.00
02 Jan 04	0841	2.4895	134.06	7.59	0.00
02 Jan 04	0842	2.5001	134.07	7.66	0.00
02 Jan 04	0843	2.5107	134.08	7.73	0.00
02 Jan 04	0844	2.5214	134.09	7.80	0.00
02 Jan 04	0845	2.5321	134.09	7.86	0.00
02 Jan 04	0846	2.5430	134.10	7.92	0.00
02 Jan 04	0847	2.5540	134.11	7.98	0.00
02 Jan 04	0848	2.5650	134.12	8.03	0.00
02 Jan 04	0849	2.5761	134.13	8.08	0.00
02 Jan 04	0850	2.5872	134.13	8.12	0.00
02 Jan 04	0851	2.5985	134.14	8.16	0.00
02 Jan 04	0852	2.6097	134.15	8.20	0.00
02 Jan 04	0853	2.6211	134.16	8.25	0.00
02 Jan 04	0854	2.6324	134.17	8.29	0.00
02 Jan 04	0855	2.6439	134.18	8.33	0.00
02 Jan 04	0856	2.6554	134.18	8.38	0.00
02 Jan 04	0857	2.6670	134.19	8.43	0.00
02 Jan 04	0858	2.6786	134.20	8.48	0.00
02 Jan 04	0859	2.6903	134.21	8.53	0.00
02 Jan 04	0900	2.7021	134.22	8.60	0.00
02 Jan 04	0901	2.7140	134.23	8.66	0.00
02 Jan 04	0902	2.7260	134.24	8.72	0.00
02 Jan 04	0903	2.7380	134.24	8.79	0.00
02 Jan 04	0904	2.7502	134.25	8.86	0.00
02 Jan 04	0905	2.7624	134.26	8.92	0.00
02 Jan 04	0906	2.7748	134.27	8.98	0.00
02 Jan 04	0907	2.7872	134.28	9.04	0.00
02 Jan 04	0908	2.7997	134.29	9.09	0.00
02 Jan 04	0909	2.8122	134.30	9.14	0.00
02 Jan 04	0910	2.8248	134.31	9.18	0.00

Date	Time	Reservoir Storage (ac-ft)	Reservoir Elevation (ft)	Inflow (cfs)	Outflow (cfs)
02 Jan 04	0911	2.8375	134.32	9.22	0.00
02 Jan 04	0912	2.8502	134.33	9.25	0.00
02 Jan 04	0913	2.8630	134.34	9.28	0.00
02 Jan 04	0914	2.8758	134.35	9.31	0.00
02 Jan 04	0915	2.8886	134.35	9.34	0.00
02 Jan 04	0916	2.9015	134.36	9.36	0.00
02 Jan 04	0917	2.9144	134.37	9.38	0.00
02 Jan 04	0918	2.9273	134.38	9.40	0.00
02 Jan 04	0919	2.9403	134.39	9.42	0.00
02 Jan 04	0920	2.9533	134.40	9.44	0.00
02 Jan 04	0921	2.9663	134.41	9.46	0.00
02 Jan 04	0922	2.9793	134.42	9.47	0.00
02 Jan 04	0923	2.9924	134.43	9.48	0.00
02 Jan 04	0924	3.0055	134.44	9.50	0.00
02 Jan 04	0925	3.0186	134.45	9.51	0.00
02 Jan 04	0926	3.0317	134.46	9.52	0.00
02 Jan 04	0927	3.0448	134.47	9.54	0.00
02 Jan 04	0928	3.0579	134.48	9.55	0.00
02 Jan 04	0929	3.0711	134.49	9.56	0.00
02 Jan 04	0930	3.0843	134.50	9.57	0.00
02 Jan 04	0931	3.0975	134.51	9.58	0.00
02 Jan 04	0932	3.1107	134.52	9.59	0.00
02 Jan 04	0933	3.1239	134.53	9.60	0.00
02 Jan 04	0934	3.1371	134.54	9.62	0.00
02 Jan 04	0935	3.1504	134.55	9.63	0.00
02 Jan 04	0936	3.1636	134.56	9.65	0.00
02 Jan 04	0937	3.1769	134.57	9.67	0.00
02 Jan 04	0938	3.1903	134.58	9.70	0.00
02 Jan 04	0939	3.2037	134.59	9.73	0.00
02 Jan 04	0940	3.2171	134.60	9.77	0.00
02 Jan 04	0941	3.2306	134.61	9.81	0.00
02 Jan 04	0942	3.2441	134.62	9.86	0.00
02 Jan 04	0943	3.2577	134.63	9.90	0.00
02 Jan 04	0944	3.2714	134.64	9.95	0.00
02 Jan 04	0945	3.2851	134.65	10.00	0.00
02 Jan 04	0946	3.2990	134.66	10.06	0.00
02 Jan 04	0947	3.3129	134.67	10.13	0.00
02 Jan 04	0948	3.3269	134.68	10.20	0.00
02 Jan 04	0949	3.3410	134.69	10.28	0.00
02 Jan 04	0950	3.3552	134.70	10.35	0.00
02 Jan 04	0951	3.3695	134.71	10.44	0.00
02 Jan 04	0952	3.3839	134.72	10.52	0.00
02 Jan 04	0953	3.3985	134.73	10.61	0.00
02 Jan 04	0954	3.4132	134.74	10.70	0.00
02 Jan 04	0955	3.4280	134.75	10.79	0.00
02 Jan 04	0956	3.4429	134.76	10.89	0.00
02 Jan 04	0957	3.4580	134.77	10.98	0.00
02 Jan 04	0958	3.4731	134.78	11.07	0.00
02 Jan 04	0959	3.4884	134.79	11.15	0.00
02 Jan 04	1000	3.5039	134.81	11.24	0.00
02 Jan 04	1001	3.5194	134.82	11.32	0.00

Date	Time	Reservoir Storage (ac-ft)	Reservoir Elevation (ft)	Inflow (cfs)	Outflow (cfs)
02 Jan 04	1002	3.5351	134.83	11.41	0.00
02 Jan 04	1003	3.5508	134.84	11.49	0.00
02 Jan 04	1004	3.5667	134.85	11.58	0.00
02 Jan 04	1005	3.5827	134.86	11.67	0.00
02 Jan 04	1006	3.5989	134.88	11.76	0.00
02 Jan 04	1007	3.6151	134.89	11.85	0.00
02 Jan 04	1008	3.6315	134.90	11.94	0.00
02 Jan 04	1009	3.6480	134.91	12.05	0.00
02 Jan 04	1010	3.6647	134.92	12.15	0.00
02 Jan 04	1011	3.6815	134.94	12.26	0.00
02 Jan 04	1012	3.6985	134.95	12.38	0.00
02 Jan 04	1013	3.7156	134.96	12.51	0.00
02 Jan 04	1014	3.7329	134.97	12.64	0.00
02 Jan 04	1015	3.7504	134.99	12.77	0.00
02 Jan 04	1016	3.7681	135.00	12.90	0.00
02 Jan 04	1017	3.7802	135.01	13.04	8.46
02 Jan 04	1018	3.7853	135.01	13.18	10.23
02 Jan 04	1019	3.7888	135.01	13.31	11.25
02 Jan 04	1020	3.7913	135.02	13.45	11.92
02 Jan 04	1021	3.7931	135.02	13.58	12.41
02 Jan 04	1022	3.7946	135.02	13.71	12.77
02 Jan 04	1023	3.7958	135.02	13.84	13.07
02 Jan 04	1024	3.7968	135.02	13.98	13.31
02 Jan 04	1025	3.7976	135.02	14.11	13.51
02 Jan 04	1026	3.7984	135.02	14.24	13.70
02 Jan 04	1027	3.7991	135.02	14.37	13.86
02 Jan 04	1028	3.7998	135.02	14.49	14.02
02 Jan 04	1029	3.8005	135.02	14.62	14.16
02 Jan 04	1030	3.8011	135.02	14.75	14.30
02 Jan 04	1031	3.8017	135.02	14.89	14.44
02 Jan 04	1032	3.8023	135.02	15.03	14.58
02 Jan 04	1033	3.8030	135.02	15.18	14.71
02 Jan 04	1034	3.8036	135.02	15.33	14.85
02 Jan 04	1035	3.8043	135.02	15.49	15.00
02 Jan 04	1036	3.8050	135.02	15.66	15.14
02 Jan 04	1037	3.8057	135.02	15.82	15.29
02 Jan 04	1038	3.8065	135.03	15.99	15.45
02 Jan 04	1039	3.8072	135.03	16.15	15.60
02 Jan 04	1040	3.8080	135.03	16.32	15.76
02 Jan 04	1041	3.8088	135.03	16.49	15.91
02 Jan 04	1042	3.8096	135.03	16.66	16.07
02 Jan 04	1043	3.8104	135.03	16.84	16.23
02 Jan 04	1044	3.8112	135.03	17.03	16.40
02 Jan 04	1045	3.8121	135.03	17.22	16.57
02 Jan 04	1046	3.8130	135.03	17.43	16.74
02 Jan 04	1047	3.8140	135.03	17.64	16.93
02 Jan 04	1048	3.8150	135.03	17.85	17.11
02 Jan 04	1049	3.8160	135.03	18.07	17.30
02 Jan 04	1050	3.8171	135.03	18.30	17.50
02 Jan 04	1051	3.8182	135.03	18.53	17.70
02 Jan 04	1052	3.8194	135.03	18.77	17.91

Date	Time	Reservoir Storage (ac-ft)	Reservoir Elevation (ft)	Inflow (cfs)	Outflow (cfs)
02 Jan 04	1053	3.8206	135.04	19.01	18.12
02 Jan 04	1054	3.8218	135.04	19.25	18.34
02 Jan 04	1055	3.8231	135.04	19.50	18.56
02 Jan 04	1056	3.8244	135.04	19.73	18.78
02 Jan 04	1057	3.8258	135.04	19.97	19.00
02 Jan 04	1058	3.8271	135.04	20.20	19.22
02 Jan 04	1059	3.8284	135.04	20.43	19.44
02 Jan 04	1100	3.8298	135.04	20.65	19.67
02 Jan 04	1101	3.8312	135.04	20.88	19.88
02 Jan 04	1102	3.8326	135.04	21.12	20.10
02 Jan 04	1103	3.8340	135.04	21.36	20.33
02 Jan 04	1104	3.8354	135.05	21.61	20.55
02 Jan 04	1105	3.8369	135.05	21.87	20.78
02 Jan 04	1106	3.8384	135.05	22.15	21.01
02 Jan 04	1107	3.8400	135.05	22.45	21.25
02 Jan 04	1108	3.8417	135.05	22.77	21.51
02 Jan 04	1109	3.8435	135.05	23.10	21.77
02 Jan 04	1110	3.8454	135.05	23.46	22.04
02 Jan 04	1111	3.8474	135.05	23.83	22.33
02 Jan 04	1112	3.8496	135.05	24.22	22.63
02 Jan 04	1113	3.8518	135.06	24.62	22.94
02 Jan 04	1114	3.8542	135.06	25.04	23.27
02 Jan 04	1115	3.8567	135.06	25.48	23.61
02 Jan 04	1116	3.8593	135.06	25.92	23.96
02 Jan 04	1117	3.8621	135.06	26.39	24.33
02 Jan 04	1118	3.8650	135.07	26.87	24.70
02 Jan 04	1119	3.8681	135.07	27.36	25.09
02 Jan 04	1120	3.8713	135.07	27.88	25.49
02 Jan 04	1121	3.8747	135.07	28.42	25.91
02 Jan 04	1122	3.8782	135.07	28.97	26.34
02 Jan 04	1123	3.8819	135.08	29.54	26.78
02 Jan 04	1124	3.8858	135.08	30.13	27.24
02 Jan 04	1125	3.8898	135.08	30.71	27.71
02 Jan 04	1126	3.8940	135.08	31.28	28.19
02 Jan 04	1127	3.8983	135.09	31.82	28.67
02 Jan 04	1128	3.9027	135.09	32.35	29.15
02 Jan 04	1129	3.9071	135.09	32.85	29.62
02 Jan 04	1130	3.9116	135.10	33.35	30.10
02 Jan 04	1131	3.9161	135.10	33.88	30.57
02 Jan 04	1132	3.9208	135.10	34.51	31.05
02 Jan 04	1133	3.9258	135.11	35.31	31.55
02 Jan 04	1134	3.9313	135.11	36.37	32.11
02 Jan 04	1135	3.9377	135.11	37.78	32.73
02 Jan 04	1136	3.9454	135.12	39.65	33.47
02 Jan 04	1137	3.9550	135.13	42.11	34.37
02 Jan 04	1138	3.9671	135.13	45.27	35.47
02 Jan 04	1139	3.9824	135.14	49.21	36.81
02 Jan 04	1140	4.0016	135.16	54.02	38.44
02 Jan 04	1141	4.0257	135.17	59.72	40.37
02 Jan 04	1142	4.0553	135.19	66.31	42.64
02 Jan 04	1143	4.0913	135.22	73.75	45.23

Date	Time	Reservoir Storage (ac-ft)	Reservoir Elevation (ft)	Inflow (cfs)	Outflow (cfs)
02 Jan 04	1144	4.1342	135.25	81.95	48.15
02 Jan 04	1145	4.1847	135.28	90.86	51.37
02 Jan 04	1146	4.2432	135.32	100.43	54.87
02 Jan 04	1147	4.3105	135.37	110.70	58.63
02 Jan 04	1148	4.3871	135.42	121.81	62.64
02 Jan 04	1149	4.4741	135.48	134.01	66.90
02 Jan 04	1150	4.5728	135.55	147.62	71.43
02 Jan 04	1151	4.6850	135.62	162.96	76.25
02 Jan 04	1152	4.8128	135.71	180.29	81.40
02 Jan 04	1153	4.9586	135.81	199.72	86.89
02 Jan 04	1154	5.1247	135.92	221.14	92.76
02 Jan 04	1155	5.3132	136.04	244.17	98.84
02 Jan 04	1156	5.5257	136.18	268.14	104.98
02 Jan 04	1157	5.7625	136.33	292.18	111.42
02 Jan 04	1158	6.0228	136.49	315.30	118.10
02 Jan 04	1159	6.3043	136.67	336.42	124.92
02 Jan 04	1200	6.6034	136.86	354.50	131.78
02 Jan 04	1201	6.9153	137.05	368.65	138.45
02 Jan 04	1202	7.2347	137.24	378.15	144.65
02 Jan 04	1203	7.5552	137.42	382.49	150.61
02 Jan 04	1204	7.8700	137.61	381.46	156.24
02 Jan 04	1205	8.1723	137.79	375.15	161.46
02 Jan 04	1206	8.4556	137.95	363.92	166.21
02 Jan 04	1207	8.7145	138.10	348.41	170.25
02 Jan 04	1208	8.9445	138.22	329.50	173.69
02 Jan 04	1209	9.1424	138.33	308.22	176.60
02 Jan 04	1210	9.3065	138.42	285.62	178.97
02 Jan 04	1211	9.4364	138.49	262.74	180.83
02 Jan 04	1212	9.5329	138.55	240.46	182.20
02 Jan 04	1213	9.5981	138.58	219.43	183.11
02 Jan 04	1214	9.6345	138.60	200.12	183.62
02 Jan 04	1215	9.6451	138.61	182.75	183.77
02 Jan 04	1216	9.6332	138.60	167.35	183.61
02 Jan 04	1217	9.6018	138.58	153.81	183.16
02 Jan 04	1218	9.5537	138.56	141.97	182.49
02 Jan 04	1219	9.4914	138.52	131.61	181.61
02 Jan 04	1220	9.4170	138.48	122.52	180.55
02 Jan 04	1221	9.3323	138.44	114.51	179.34
02 Jan 04	1222	9.2391	138.39	107.39	178.00
02 Jan 04	1223	9.1384	138.33	101.03	176.54
02 Jan 04	1224	9.0316	138.27	95.31	174.98
02 Jan 04	1225	8.9194	138.21	90.13	173.32
02 Jan 04	1226	8.8028	138.15	85.40	171.58
02 Jan 04	1227	8.6823	138.08	81.07	169.76
02 Jan 04	1228	8.5587	138.01	77.09	167.88
02 Jan 04	1229	8.4325	137.94	73.41	165.83
02 Jan 04	1230	8.3044	137.86	70.00	163.69
02 Jan 04	1231	8.1746	137.79	66.83	161.50
02 Jan 04	1232	8.0438	137.71	63.88	159.26
02 Jan 04	1233	7.9121	137.63	61.13	156.98
02 Jan 04	1234	7.7799	137.56	58.54	154.65

Date	Time	Reservoir Storage (ac-ft)	Reservoir Elevation (ft)	Inflow (cfs)	Outflow (cfs)
02 Jan 04	1235	7.6474	137.48	56.12	152.28
02 Jan 04	1236	7.5151	137.40	53.85	149.87
02 Jan 04	1237	7.3831	137.32	51.74	147.44
02 Jan 04	1238	7.2516	137.25	49.77	144.97
02 Jan 04	1239	7.1209	137.17	47.95	142.47
02 Jan 04	1240	6.9913	137.09	46.27	139.95
02 Jan 04	1241	6.8630	137.02	44.74	137.41
02 Jan 04	1242	6.7362	136.94	43.34	134.71
02 Jan 04	1243	6.6114	136.86	42.08	131.96
02 Jan 04	1244	6.4887	136.78	40.93	129.19
02 Jan 04	1245	6.3683	136.71	39.88	126.42
02 Jan 04	1246	6.2504	136.63	38.93	123.64
02 Jan 04	1247	6.1350	136.56	38.05	120.86
02 Jan 04	1248	6.0223	136.49	37.24	118.09
02 Jan 04	1249	5.9123	136.42	36.48	115.31
02 Jan 04	1250	5.8052	136.35	35.76	112.54
02 Jan 04	1251	5.7008	136.29	35.09	109.78
02 Jan 04	1252	5.5994	136.22	34.44	107.02
02 Jan 04	1253	5.5009	136.16	33.83	104.28
02 Jan 04	1254	5.4053	136.10	33.24	101.55
02 Jan 04	1255	5.3127	136.04	32.68	98.83
02 Jan 04	1256	5.2232	135.99	32.15	96.07
02 Jan 04	1257	5.1367	135.93	31.64	93.17
02 Jan 04	1258	5.0536	135.87	31.15	90.30
02 Jan 04	1259	4.9738	135.82	30.69	87.45
02 Jan 04	1300	4.8973	135.77	30.26	84.63
02 Jan 04	1301	4.8240	135.72	29.84	81.83
02 Jan 04	1302	4.7540	135.67	29.45	79.07
02 Jan 04	1303	4.6873	135.62	29.07	76.35
02 Jan 04	1304	4.6238	135.58	28.72	73.66
02 Jan 04	1305	4.5635	135.54	28.37	71.01
02 Jan 04	1306	4.5063	135.50	28.03	68.41
02 Jan 04	1307	4.4522	135.46	27.70	65.85
02 Jan 04	1308	4.4011	135.43	27.38	63.35
02 Jan 04	1309	4.3531	135.40	27.06	60.89
02 Jan 04	1310	4.3079	135.37	26.76	58.49
02 Jan 04	1311	4.2656	135.34	26.46	56.15
02 Jan 04	1312	4.2261	135.31	26.17	53.87
02 Jan 04	1313	4.1893	135.29	25.87	51.65
02 Jan 04	1314	4.1550	135.26	25.58	49.51
02 Jan 04	1315	4.1233	135.24	25.31	47.43
02 Jan 04	1316	4.0940	135.22	25.03	45.43
02 Jan 04	1317	4.0671	135.20	24.76	43.50
02 Jan 04	1318	4.0424	135.19	24.50	41.66
02 Jan 04	1319	4.0198	135.17	24.26	39.90
02 Jan 04	1320	3.9992	135.16	24.03	38.23
02 Jan 04	1321	3.9806	135.14	23.81	36.66
02 Jan 04	1322	3.9638	135.13	23.60	35.17
02 Jan 04	1323	3.9487	135.12	23.42	33.78
02 Jan 04	1324	3.9352	135.11	23.23	32.49
02 Jan 04	1325	3.9231	135.10	23.05	31.29

Date	Time	Reservoir Storage (ac-ft)	Reservoir Elevation (ft)	Inflow (cfs)	Outflow (cfs)
02 Jan 04	1326	3.9124	135.10	22.87	30.18
02 Jan 04	1327	3.9029	135.09	22.70	29.17
02 Jan 04	1328	3.8945	135.09	22.52	28.24
02 Jan 04	1329	3.8871	135.08	22.33	27.39
02 Jan 04	1330	3.8805	135.08	22.13	26.62
02 Jan 04	1331	3.8747	135.07	21.93	25.91
02 Jan 04	1332	3.8695	135.07	21.73	25.27
02 Jan 04	1333	3.8649	135.07	21.53	24.68
02 Jan 04	1334	3.8608	135.06	21.33	24.15
02 Jan 04	1335	3.8571	135.06	21.13	23.66
02 Jan 04	1336	3.8538	135.06	20.94	23.21
02 Jan 04	1337	3.8508	135.06	20.74	22.80
02 Jan 04	1338	3.8481	135.05	20.55	22.42
02 Jan 04	1339	3.8456	135.05	20.36	22.07
02 Jan 04	1340	3.8434	135.05	20.18	21.74
02 Jan 04	1341	3.8413	135.05	20.01	21.44
02 Jan 04	1342	3.8394	135.05	19.84	21.16
02 Jan 04	1343	3.8377	135.05	19.68	20.89
02 Jan 04	1344	3.8360	135.05	19.52	20.65
02 Jan 04	1345	3.8345	135.04	19.36	20.41
02 Jan 04	1346	3.8331	135.04	19.21	20.20
02 Jan 04	1347	3.8318	135.04	19.06	19.99
02 Jan 04	1348	3.8306	135.04	18.90	19.79
02 Jan 04	1349	3.8294	135.04	18.75	19.60
02 Jan 04	1350	3.8282	135.04	18.61	19.41
02 Jan 04	1351	3.8271	135.04	18.46	19.23
02 Jan 04	1352	3.8261	135.04	18.32	19.06
02 Jan 04	1353	3.8251	135.04	18.18	18.89
02 Jan 04	1354	3.8241	135.04	18.04	18.73
02 Jan 04	1355	3.8232	135.04	17.90	18.57
02 Jan 04	1356	3.8223	135.04	17.76	18.41
02 Jan 04	1357	3.8214	135.04	17.62	18.26
02 Jan 04	1358	3.8205	135.04	17.47	18.11
02 Jan 04	1359	3.8196	135.03	17.32	17.95
02 Jan 04	1400	3.8188	135.03	17.18	17.80
02 Jan 04	1401	3.8179	135.03	17.04	17.65
02 Jan 04	1402	3.8171	135.03	16.90	17.50
02 Jan 04	1403	3.8163	135.03	16.77	17.35
02 Jan 04	1404	3.8155	135.03	16.64	17.21
02 Jan 04	1405	3.8148	135.03	16.52	17.07
02 Jan 04	1406	3.8140	135.03	16.40	16.93
02 Jan 04	1407	3.8133	135.03	16.29	16.80
02 Jan 04	1408	3.8126	135.03	16.19	16.67
02 Jan 04	1409	3.8120	135.03	16.08	16.54
02 Jan 04	1410	3.8114	135.03	15.98	16.42
02 Jan 04	1411	3.8108	135.03	15.88	16.31
02 Jan 04	1412	3.8102	135.03	15.79	16.20
02 Jan 04	1413	3.8096	135.03	15.69	16.09
02 Jan 04	1414	3.8091	135.03	15.60	15.98
02 Jan 04	1415	3.8086	135.03	15.52	15.88
02 Jan 04	1416	3.8081	135.03	15.44	15.78

Date	Time	Reservoir Storage (ac-ft)	Reservoir Elevation (ft)	Inflow (cfs)	Outflow (cfs)
02 Jan 04	1417	3.8077	135.03	15.36	15.69
02 Jan 04	1418	3.8072	135.03	15.28	15.60
02 Jan 04	1419	3.8068	135.03	15.20	15.51
02 Jan 04	1420	3.8064	135.03	15.13	15.42
02 Jan 04	1421	3.8059	135.03	15.05	15.34
02 Jan 04	1422	3.8055	135.02	14.97	15.26
02 Jan 04	1423	3.8051	135.02	14.89	15.17
02 Jan 04	1424	3.8048	135.02	14.82	15.09
02 Jan 04	1425	3.8044	135.02	14.74	15.01
02 Jan 04	1426	3.8040	135.02	14.67	14.94
02 Jan 04	1427	3.8037	135.02	14.61	14.86
02 Jan 04	1428	3.8033	135.02	14.54	14.79
02 Jan 04	1429	3.8030	135.02	14.48	14.72
02 Jan 04	1430	3.8027	135.02	14.43	14.65
02 Jan 04	1431	3.8024	135.02	14.38	14.59
02 Jan 04	1432	3.8021	135.02	14.34	14.53
02 Jan 04	1433	3.8019	135.02	14.30	14.47
02 Jan 04	1434	3.8016	135.02	14.26	14.42
02 Jan 04	1435	3.8014	135.02	14.23	14.37
02 Jan 04	1436	3.8012	135.02	14.19	14.33
02 Jan 04	1437	3.8010	135.02	14.16	14.29
02 Jan 04	1438	3.8009	135.02	14.12	14.25
02 Jan 04	1439	3.8007	135.02	14.08	14.21
02 Jan 04	1440	3.8005	135.02	14.04	14.17
02 Jan 04	1441	3.8003	135.02	14.00	14.13
02 Jan 04	1442	3.8001	135.02	13.96	14.09
02 Jan 04	1443	3.8000	135.02	13.92	14.05
02 Jan 04	1444	3.7998	135.02	13.88	14.01
02 Jan 04	1445	3.7996	135.02	13.84	13.97
02 Jan 04	1446	3.7994	135.02	13.80	13.93
02 Jan 04	1447	3.7993	135.02	13.76	13.89
02 Jan 04	1448	3.7991	135.02	13.71	13.85
02 Jan 04	1449	3.7989	135.02	13.67	13.80
02 Jan 04	1450	3.7987	135.02	13.62	13.76
02 Jan 04	1451	3.7985	135.02	13.57	13.72
02 Jan 04	1452	3.7983	135.02	13.53	13.67
02 Jan 04	1453	3.7981	135.02	13.48	13.63
02 Jan 04	1454	3.7979	135.02	13.44	13.58
02 Jan 04	1455	3.7977	135.02	13.39	13.53
02 Jan 04	1456	3.7975	135.02	13.34	13.49
02 Jan 04	1457	3.7973	135.02	13.29	13.44
02 Jan 04	1458	3.7971	135.02	13.23	13.39
02 Jan 04	1459	3.7969	135.02	13.17	13.34
02 Jan 04	1500	3.7967	135.02	13.12	13.28
02 Jan 04	1501	3.7964	135.02	13.05	13.23
02 Jan 04	1502	3.7962	135.02	12.99	13.17
02 Jan 04	1503	3.7959	135.02	12.93	13.11
02 Jan 04	1504	3.7957	135.02	12.87	13.05
02 Jan 04	1505	3.7955	135.02	12.82	12.99
02 Jan 04	1506	3.7952	135.02	12.77	12.93
02 Jan 04	1507	3.7950	135.02	12.72	12.88

Date	Time	Reservoir Storage (ac-ft)	Reservoir Elevation (ft)	Inflow (cfs)	Outflow (cfs)
02 Jan 04	1508	3.7948	135.02	12.68	12.83
02 Jan 04	1509	3.7946	135.02	12.65	12.78
02 Jan 04	1510	3.7944	135.02	12.61	12.74
02 Jan 04	1511	3.7943	135.02	12.57	12.69
02 Jan 04	1512	3.7941	135.02	12.54	12.65
02 Jan 04	1513	3.7939	135.02	12.50	12.61
02 Jan 04	1514	3.7938	135.02	12.46	12.57
02 Jan 04	1515	3.7936	135.02	12.40	12.53
02 Jan 04	1516	3.7934	135.02	12.35	12.49
02 Jan 04	1517	3.7932	135.02	12.30	12.44
02 Jan 04	1518	3.7931	135.02	12.25	12.39
02 Jan 04	1519	3.7929	135.02	12.19	12.34
02 Jan 04	1520	3.7926	135.02	12.13	12.29
02 Jan 04	1521	3.7924	135.02	12.08	12.23
02 Jan 04	1522	3.7922	135.02	12.02	12.18
02 Jan 04	1523	3.7920	135.02	11.97	12.12
02 Jan 04	1524	3.7918	135.02	11.92	12.07
02 Jan 04	1525	3.7916	135.02	11.86	12.01
02 Jan 04	1526	3.7914	135.02	11.80	11.96
02 Jan 04	1527	3.7912	135.02	11.75	11.90
02 Jan 04	1528	3.7910	135.01	11.70	11.85
02 Jan 04	1529	3.7908	135.01	11.64	11.79
02 Jan 04	1530	3.7906	135.01	11.59	11.74
02 Jan 04	1531	3.7904	135.01	11.54	11.68
02 Jan 04	1532	3.7902	135.01	11.49	11.63
02 Jan 04	1533	3.7900	135.01	11.45	11.58
02 Jan 04	1534	3.7898	135.01	11.40	11.53
02 Jan 04	1535	3.7896	135.01	11.35	11.48
02 Jan 04	1536	3.7894	135.01	11.30	11.43
02 Jan 04	1537	3.7893	135.01	11.25	11.38
02 Jan 04	1538	3.7891	135.01	11.20	11.33
02 Jan 04	1539	3.7889	135.01	11.15	11.28
02 Jan 04	1540	3.7887	135.01	11.11	11.23
02 Jan 04	1541	3.7886	135.01	11.07	11.19
02 Jan 04	1542	3.7884	135.01	11.04	11.14
02 Jan 04	1543	3.7883	135.01	11.00	11.10
02 Jan 04	1544	3.7882	135.01	10.97	11.06
02 Jan 04	1545	3.7880	135.01	10.94	11.03
02 Jan 04	1546	3.7879	135.01	10.91	10.99
02 Jan 04	1547	3.7878	135.01	10.88	10.96
02 Jan 04	1548	3.7877	135.01	10.85	10.93
02 Jan 04	1549	3.7876	135.01	10.82	10.90
02 Jan 04	1550	3.7875	135.01	10.78	10.86
02 Jan 04	1551	3.7874	135.01	10.75	10.83
02 Jan 04	1552	3.7872	135.01	10.70	10.80
02 Jan 04	1553	3.7871	135.01	10.65	10.76
02 Jan 04	1554	3.7869	135.01	10.60	10.71
02 Jan 04	1555	3.7868	135.01	10.55	10.67
02 Jan 04	1556	3.7866	135.01	10.49	10.62
02 Jan 04	1557	3.7864	135.01	10.44	10.56
02 Jan 04	1558	3.7863	135.01	10.38	10.51

Date	Time	Reservoir Storage (ac-ft)	Reservoir Elevation (ft)	Inflow (cfs)	Outflow (cfs)
02 Jan 04	1559	3.7861	135.01	10.32	10.45
02 Jan 04	1600	3.7859	135.01	10.26	10.40
02 Jan 04	1601	3.7857	135.01	10.20	10.34
02 Jan 04	1602	3.7855	135.01	10.14	10.28
02 Jan 04	1603	3.7853	135.01	10.08	10.22
02 Jan 04	1604	3.7851	135.01	10.02	10.16
02 Jan 04	1605	3.7849	135.01	9.97	10.10
02 Jan 04	1606	3.7848	135.01	9.92	10.04
02 Jan 04	1607	3.7846	135.01	9.87	9.99
02 Jan 04	1608	3.7844	135.01	9.83	9.94
02 Jan 04	1609	3.7843	135.01	9.78	9.89
02 Jan 04	1610	3.7841	135.01	9.74	9.84
02 Jan 04	1611	3.7840	135.01	9.69	9.80
02 Jan 04	1612	3.7838	135.01	9.65	9.75
02 Jan 04	1613	3.7837	135.01	9.61	9.71
02 Jan 04	1614	3.7836	135.01	9.57	9.66
02 Jan 04	1615	3.7835	135.01	9.53	9.62
02 Jan 04	1616	3.7833	135.01	9.50	9.58
02 Jan 04	1617	3.7832	135.01	9.47	9.54
02 Jan 04	1618	3.7831	135.01	9.45	9.51
02 Jan 04	1619	3.7830	135.01	9.43	9.48
02 Jan 04	1620	3.7830	135.01	9.41	9.46
02 Jan 04	1621	3.7829	135.01	9.40	9.44
02 Jan 04	1622	3.7829	135.01	9.40	9.43
02 Jan 04	1623	3.7828	135.01	9.40	9.42
02 Jan 04	1624	3.7828	135.01	9.39	9.41
02 Jan 04	1625	3.7828	135.01	9.38	9.40
02 Jan 04	1626	3.7828	135.01	9.38	9.39
02 Jan 04	1627	3.7827	135.01	9.36	9.38
02 Jan 04	1628	3.7827	135.01	9.34	9.37
02 Jan 04	1629	3.7827	135.01	9.33	9.36
02 Jan 04	1630	3.7826	135.01	9.31	9.34
02 Jan 04	1631	3.7826	135.01	9.29	9.33
02 Jan 04	1632	3.7825	135.01	9.27	9.31
02 Jan 04	1633	3.7825	135.01	9.26	9.29
02 Jan 04	1634	3.7824	135.01	9.24	9.28
02 Jan 04	1635	3.7824	135.01	9.23	9.26
02 Jan 04	1636	3.7823	135.01	9.21	9.25
02 Jan 04	1637	3.7823	135.01	9.20	9.23
02 Jan 04	1638	3.7823	135.01	9.19	9.22
02 Jan 04	1639	3.7822	135.01	9.18	9.21
02 Jan 04	1640	3.7822	135.01	9.17	9.20
02 Jan 04	1641	3.7822	135.01	9.16	9.19
02 Jan 04	1642	3.7821	135.01	9.15	9.17
02 Jan 04	1643	3.7821	135.01	9.13	9.16
02 Jan 04	1644	3.7820	135.01	9.10	9.14
02 Jan 04	1645	3.7820	135.01	9.07	9.12
02 Jan 04	1646	3.7819	135.01	9.03	9.09
02 Jan 04	1647	3.7818	135.01	8.99	9.06
02 Jan 04	1648	3.7817	135.01	8.94	9.02
02 Jan 04	1649	3.7816	135.01	8.91	8.98

Date	Time	Reservoir Storage (ac-ft)	Reservoir Elevation (ft)	Inflow (cfs)	Outflow (cfs)
02 Jan 04	1650	3.7815	135.01	8.87	8.95
02 Jan 04	1651	3.7814	135.01	8.84	8.91
02 Jan 04	1652	3.7813	135.01	8.81	8.88
02 Jan 04	1653	3.7812	135.01	8.79	8.85
02 Jan 04	1654	3.7811	135.01	8.77	8.82
02 Jan 04	1655	3.7811	135.01	8.76	8.80
02 Jan 04	1656	3.7810	135.01	8.76	8.78
02 Jan 04	1657	3.7810	135.01	8.76	8.78
02 Jan 04	1658	3.7810	135.01	8.77	8.77
02 Jan 04	1659	3.7810	135.01	8.78	8.77
02 Jan 04	1700	3.7810	135.01	8.79	8.77
02 Jan 04	1701	3.7810	135.01	8.79	8.78
02 Jan 04	1702	3.7810	135.01	8.79	8.79
02 Jan 04	1703	3.7810	135.01	8.79	8.79
02 Jan 04	1704	3.7810	135.01	8.78	8.79
02 Jan 04	1705	3.7810	135.01	8.76	8.78
02 Jan 04	1706	3.7810	135.01	8.74	8.77
02 Jan 04	1707	3.7809	135.01	8.71	8.75
02 Jan 04	1708	3.7809	135.01	8.67	8.73
02 Jan 04	1709	3.7808	135.01	8.64	8.70
02 Jan 04	1710	3.7807	135.01	8.60	8.67
02 Jan 04	1711	3.7806	135.01	8.57	8.64
02 Jan 04	1712	3.7805	135.01	8.54	8.60
02 Jan 04	1713	3.7804	135.01	8.51	8.57
02 Jan 04	1714	3.7804	135.01	8.49	8.54
02 Jan 04	1715	3.7803	135.01	8.47	8.52
02 Jan 04	1716	3.7802	135.01	8.44	8.49
02 Jan 04	1717	3.7802	135.01	8.43	8.47
02 Jan 04	1718	3.7801	135.01	8.41	8.45
02 Jan 04	1719	3.7801	135.01	8.40	8.43
02 Jan 04	1720	3.7800	135.01	8.38	8.41
02 Jan 04	1721	3.7800	135.01	8.36	8.40
02 Jan 04	1722	3.7799	135.01	8.34	8.38
02 Jan 04	1723	3.7799	135.01	8.33	8.36
02 Jan 04	1724	3.7798	135.01	8.30	8.34
02 Jan 04	1725	3.7798	135.01	8.27	8.32
02 Jan 04	1726	3.7797	135.01	8.25	8.30
02 Jan 04	1727	3.7796	135.01	8.23	8.27
02 Jan 04	1728	3.7796	135.01	8.21	8.25
02 Jan 04	1729	3.7795	135.01	8.19	8.23
02 Jan 04	1730	3.7795	135.01	8.19	8.21
02 Jan 04	1731	3.7795	135.01	8.18	8.20
02 Jan 04	1732	3.7794	135.01	8.17	8.19
02 Jan 04	1733	3.7794	135.01	8.17	8.18
02 Jan 04	1734	3.7794	135.01	8.17	8.18
02 Jan 04	1735	3.7794	135.01	8.18	8.18
02 Jan 04	1736	3.7794	135.01	8.17	8.17
02 Jan 04	1737	3.7794	135.01	8.16	8.17
02 Jan 04	1738	3.7794	135.01	8.15	8.16
02 Jan 04	1739	3.7794	135.01	8.14	8.16
02 Jan 04	1740	3.7793	135.01	8.13	8.15

Date	Time	Reservoir Storage (ac-ft)	Reservoir Elevation (ft)	Inflow (cfs)	Outflow (cfs)
02 Jan 04	1741	3.7793	135.01	8.11	8.13
02 Jan 04	1742	3.7793	135.01	8.09	8.12
02 Jan 04	1743	3.7792	135.01	8.07	8.10
02 Jan 04	1744	3.7792	135.01	8.05	8.08
02 Jan 04	1745	3.7791	135.01	8.03	8.06
02 Jan 04	1746	3.7791	135.01	8.01	8.04
02 Jan 04	1747	3.7790	135.01	7.98	8.02
02 Jan 04	1748	3.7789	135.01	7.94	8.00
02 Jan 04	1749	3.7789	135.01	7.91	7.97
02 Jan 04	1750	3.7788	135.01	7.87	7.93
02 Jan 04	1751	3.7787	135.01	7.84	7.90
02 Jan 04	1752	3.7786	135.01	7.81	7.87
02 Jan 04	1753	3.7785	135.01	7.78	7.84
02 Jan 04	1754	3.7785	135.01	7.76	7.81
02 Jan 04	1755	3.7784	135.01	7.75	7.78
02 Jan 04	1756	3.7784	135.01	7.75	7.77
02 Jan 04	1757	3.7784	135.01	7.75	7.76
02 Jan 04	1758	3.7783	135.01	7.75	7.75
02 Jan 04	1759	3.7783	135.01	7.75	7.75
02 Jan 04	1800	3.7783	135.01	7.75	7.75
02 Jan 04	1801	3.7783	135.01	7.74	7.75
02 Jan 04	1802	3.7783	135.01	7.73	7.74
02 Jan 04	1803	3.7783	135.01	7.72	7.74
02 Jan 04	1804	3.7783	135.01	7.70	7.72
02 Jan 04	1805	3.7782	135.01	7.69	7.71
02 Jan 04	1806	3.7782	135.01	7.67	7.70
02 Jan 04	1807	3.7782	135.01	7.65	7.68
02 Jan 04	1808	3.7781	135.01	7.63	7.66
02 Jan 04	1809	3.7781	135.01	7.61	7.64
02 Jan 04	1810	3.7780	135.01	7.58	7.62
02 Jan 04	1811	3.7780	135.01	7.56	7.60
02 Jan 04	1812	3.7779	135.01	7.53	7.57
02 Jan 04	1813	3.7778	135.01	7.49	7.54
02 Jan 04	1814	3.7778	135.01	7.46	7.51
02 Jan 04	1815	3.7777	135.01	7.43	7.48
02 Jan 04	1816	3.7776	135.01	7.40	7.45
02 Jan 04	1817	3.7775	135.01	7.38	7.42
02 Jan 04	1818	3.7775	135.01	7.37	7.40
02 Jan 04	1819	3.7775	135.01	7.36	7.38
02 Jan 04	1820	3.7774	135.01	7.36	7.37
02 Jan 04	1821	3.7774	135.01	7.36	7.37
02 Jan 04	1822	3.7774	135.01	7.36	7.37
02 Jan 04	1823	3.7774	135.01	7.36	7.37
02 Jan 04	1824	3.7774	135.01	7.36	7.36
02 Jan 04	1825	3.7774	135.01	7.35	7.36
02 Jan 04	1826	3.7774	135.01	7.34	7.36
02 Jan 04	1827	3.7774	135.01	7.33	7.35
02 Jan 04	1828	3.7773	135.01	7.31	7.33
02 Jan 04	1829	3.7773	135.01	7.29	7.32
02 Jan 04	1830	3.7773	135.01	7.27	7.30
02 Jan 04	1831	3.7772	135.01	7.25	7.28

Date	Time	Reservoir Storage (ac-ft)	Reservoir Elevation (ft)	Inflow (cfs)	Outflow (cfs)
02 Jan 04	1832	3.7772	135.01	7.23	7.26
02 Jan 04	1833	3.7771	135.01	7.20	7.24
02 Jan 04	1834	3.7771	135.01	7.17	7.21
02 Jan 04	1835	3.7770	135.01	7.14	7.19
02 Jan 04	1836	3.7769	135.01	7.11	7.16
02 Jan 04	1837	3.7769	135.01	7.08	7.13
02 Jan 04	1838	3.7768	135.01	7.05	7.10
02 Jan 04	1839	3.7767	135.01	7.02	7.07
02 Jan 04	1840	3.7767	135.01	6.99	7.04
02 Jan 04	1841	3.7766	135.01	6.96	7.01
02 Jan 04	1842	3.7766	135.01	6.95	6.98
02 Jan 04	1843	3.7765	135.01	6.94	6.97
02 Jan 04	1844	3.7765	135.01	6.93	6.95
02 Jan 04	1845	3.7765	135.01	6.92	6.94
02 Jan 04	1846	3.7764	135.01	6.92	6.93
02 Jan 04	1847	3.7764	135.01	6.92	6.92
02 Jan 04	1848	3.7764	135.01	6.91	6.92
02 Jan 04	1849	3.7764	135.01	6.91	6.92
02 Jan 04	1850	3.7764	135.01	6.90	6.91
02 Jan 04	1851	3.7764	135.01	6.89	6.90
02 Jan 04	1852	3.7764	135.01	6.87	6.89
02 Jan 04	1853	3.7763	135.01	6.86	6.88
02 Jan 04	1854	3.7763	135.01	6.84	6.87
02 Jan 04	1855	3.7763	135.01	6.83	6.85
02 Jan 04	1856	3.7762	135.00	6.81	6.84
02 Jan 04	1857	3.7762	135.00	6.78	6.82
02 Jan 04	1858	3.7761	135.00	6.76	6.80
02 Jan 04	1859	3.7761	135.00	6.74	6.77
02 Jan 04	1900	3.7760	135.00	6.70	6.75
02 Jan 04	1901	3.7760	135.00	6.67	6.72
02 Jan 04	1902	3.7759	135.00	6.64	6.69
02 Jan 04	1903	3.7758	135.00	6.60	6.65
02 Jan 04	1904	3.7758	135.00	6.58	6.62
02 Jan 04	1905	3.7757	135.00	6.56	6.59
02 Jan 04	1906	3.7757	135.00	6.54	6.57
02 Jan 04	1907	3.7756	135.00	6.54	6.56
02 Jan 04	1908	3.7756	135.00	6.54	6.55
02 Jan 04	1909	3.7756	135.00	6.54	6.54
02 Jan 04	1910	3.7756	135.00	6.54	6.54
02 Jan 04	1911	3.7756	135.00	6.54	6.54
02 Jan 04	1912	3.7756	135.00	6.55	6.54
02 Jan 04	1913	3.7756	135.00	6.54	6.54
02 Jan 04	1914	3.7756	135.00	6.53	6.54
02 Jan 04	1915	3.7756	135.00	6.50	6.53
02 Jan 04	1916	3.7755	135.00	6.48	6.51
02 Jan 04	1917	3.7755	135.00	6.45	6.49
02 Jan 04	1918	3.7754	135.00	6.42	6.46
02 Jan 04	1919	3.7754	135.00	6.39	6.43
02 Jan 04	1920	3.7753	135.00	6.37	6.41
02 Jan 04	1921	3.7753	135.00	6.35	6.38
02 Jan 04	1922	3.7752	135.00	6.34	6.36

Date	Time	Reservoir Storage (ac-ft)	Reservoir Elevation (ft)	Inflow (cfs)	Outflow (cfs)
02 Jan 04	1923	3.7752	135.00	6.33	6.35
02 Jan 04	1924	3.7752	135.00	6.33	6.34
02 Jan 04	1925	3.7752	135.00	6.33	6.34
02 Jan 04	1926	3.7752	135.00	6.33	6.33
02 Jan 04	1927	3.7752	135.00	6.32	6.33
02 Jan 04	1928	3.7752	135.00	6.31	6.32
02 Jan 04	1929	3.7751	135.00	6.28	6.31
02 Jan 04	1930	3.7751	135.00	6.26	6.29
02 Jan 04	1931	3.7751	135.00	6.23	6.27
02 Jan 04	1932	3.7750	135.00	6.20	6.24
02 Jan 04	1933	3.7749	135.00	6.17	6.21
02 Jan 04	1934	3.7749	135.00	6.13	6.18
02 Jan 04	1935	3.7748	135.00	6.10	6.15
02 Jan 04	1936	3.7748	135.00	6.07	6.11
02 Jan 04	1937	3.7747	135.00	6.04	6.08
02 Jan 04	1938	3.7746	135.00	6.01	6.05
02 Jan 04	1939	3.7746	135.00	5.99	6.03
02 Jan 04	1940	3.7745	135.00	5.97	6.00
02 Jan 04	1941	3.7745	135.00	5.95	5.98
02 Jan 04	1942	3.7745	135.00	5.94	5.96
02 Jan 04	1943	3.7744	135.00	5.92	5.95
02 Jan 04	1944	3.7744	135.00	5.91	5.93
02 Jan 04	1945	3.7744	135.00	5.89	5.91
02 Jan 04	1946	3.7743	135.00	5.87	5.90
02 Jan 04	1947	3.7743	135.00	5.85	5.88
02 Jan 04	1948	3.7743	135.00	5.83	5.86
02 Jan 04	1949	3.7742	135.00	5.80	5.83
02 Jan 04	1950	3.7742	135.00	5.77	5.81
02 Jan 04	1951	3.7741	135.00	5.76	5.79
02 Jan 04	1952	3.7741	135.00	5.73	5.76
02 Jan 04	1953	3.7741	135.00	5.72	5.74
02 Jan 04	1954	3.7740	135.00	5.71	5.73
02 Jan 04	1955	3.7740	135.00	5.70	5.72
02 Jan 04	1956	3.7740	135.00	5.70	5.71
02 Jan 04	1957	3.7740	135.00	5.70	5.70
02 Jan 04	1958	3.7740	135.00	5.70	5.70
02 Jan 04	1959	3.7740	135.00	5.70	5.70
02 Jan 04	2000	3.7740	135.00	5.69	5.70
02 Jan 04	2001	3.7740	135.00	5.68	5.69
02 Jan 04	2002	3.7740	135.00	5.68	5.68
02 Jan 04	2003	3.7739	135.00	5.66	5.68
02 Jan 04	2004	3.7739	135.00	5.64	5.66
02 Jan 04	2005	3.7739	135.00	5.62	5.64
02 Jan 04	2006	3.7738	135.00	5.60	5.62
02 Jan 04	2007	3.7738	135.00	5.57	5.60
02 Jan 04	2008	3.7738	135.00	5.55	5.58
02 Jan 04	2009	3.7737	135.00	5.53	5.56
02 Jan 04	2010	3.7737	135.00	5.52	5.54
02 Jan 04	2011	3.7737	135.00	5.51	5.53
02 Jan 04	2012	3.7737	135.00	5.50	5.52
02 Jan 04	2013	3.7736	135.00	5.50	5.51

Date	Time	Reservoir Storage (ac-ft)	Reservoir Elevation (ft)	Inflow (cfs)	Outflow (cfs)
02 Jan 04	2014	3.7736	135.00	5.49	5.50
02 Jan 04	2015	3.7736	135.00	5.48	5.49
02 Jan 04	2016	3.7736	135.00	5.48	5.49
02 Jan 04	2017	3.7736	135.00	5.47	5.48
02 Jan 04	2018	3.7736	135.00	5.46	5.47
02 Jan 04	2019	3.7736	135.00	5.44	5.46
02 Jan 04	2020	3.7735	135.00	5.44	5.45
02 Jan 04	2021	3.7735	135.00	5.44	5.44
02 Jan 04	2022	3.7735	135.00	5.44	5.44
02 Jan 04	2023	3.7735	135.00	5.44	5.44
02 Jan 04	2024	3.7735	135.00	5.44	5.44
02 Jan 04	2025	3.7735	135.00	5.44	5.44
02 Jan 04	2026	3.7735	135.00	5.44	5.44
02 Jan 04	2027	3.7735	135.00	5.44	5.44
02 Jan 04	2028	3.7735	135.00	5.44	5.44
02 Jan 04	2029	3.7735	135.00	5.42	5.43
02 Jan 04	2030	3.7735	135.00	5.40	5.42
02 Jan 04	2031	3.7735	135.00	5.38	5.40
02 Jan 04	2032	3.7734	135.00	5.35	5.38
02 Jan 04	2033	3.7734	135.00	5.32	5.35
02 Jan 04	2034	3.7733	135.00	5.30	5.33
02 Jan 04	2035	3.7733	135.00	5.28	5.30
02 Jan 04	2036	3.7733	135.00	5.26	5.28
02 Jan 04	2037	3.7732	135.00	5.25	5.27
02 Jan 04	2038	3.7732	135.00	5.25	5.26
02 Jan 04	2039	3.7732	135.00	5.26	5.25
02 Jan 04	2040	3.7732	135.00	5.27	5.26
02 Jan 04	2041	3.7732	135.00	5.29	5.27
02 Jan 04	2042	3.7733	135.00	5.30	5.29
02 Jan 04	2043	3.7733	135.00	5.32	5.30
02 Jan 04	2044	3.7733	135.00	5.34	5.32
02 Jan 04	2045	3.7733	135.00	5.35	5.33
02 Jan 04	2046	3.7734	135.00	5.36	5.34
02 Jan 04	2047	3.7734	135.00	5.35	5.35
02 Jan 04	2048	3.7734	135.00	5.34	5.35
02 Jan 04	2049	3.7734	135.00	5.33	5.34
02 Jan 04	2050	3.7733	135.00	5.31	5.33
02 Jan 04	2051	3.7733	135.00	5.29	5.31
02 Jan 04	2052	3.7733	135.00	5.28	5.29
02 Jan 04	2053	3.7733	135.00	5.26	5.28
02 Jan 04	2054	3.7732	135.00	5.25	5.27
02 Jan 04	2055	3.7732	135.00	5.25	5.26
02 Jan 04	2056	3.7732	135.00	5.26	5.25
02 Jan 04	2057	3.7732	135.00	5.26	5.26
02 Jan 04	2058	3.7732	135.00	5.26	5.26
02 Jan 04	2059	3.7732	135.00	5.26	5.26
02 Jan 04	2100	3.7732	135.00	5.26	5.26
02 Jan 04	2101	3.7732	135.00	5.25	5.26
02 Jan 04	2102	3.7732	135.00	5.23	5.25
02 Jan 04	2103	3.7732	135.00	5.22	5.24
02 Jan 04	2104	3.7732	135.00	5.21	5.22

Date	Time	Reservoir Storage (ac-ft)	Reservoir Elevation (ft)	Inflow (cfs)	Outflow (cfs)
02 Jan 04	2105	3.7731	135.00	5.20	5.21
02 Jan 04	2106	3.7731	135.00	5.19	5.20
02 Jan 04	2107	3.7731	135.00	5.19	5.20
02 Jan 04	2108	3.7731	135.00	5.20	5.20
02 Jan 04	2109	3.7731	135.00	5.21	5.20
02 Jan 04	2110	3.7731	135.00	5.22	5.21
02 Jan 04	2111	3.7732	135.00	5.23	5.22
02 Jan 04	2112	3.7732	135.00	5.23	5.23
02 Jan 04	2113	3.7732	135.00	5.23	5.23
02 Jan 04	2114	3.7732	135.00	5.23	5.23
02 Jan 04	2115	3.7732	135.00	5.21	5.22
02 Jan 04	2116	3.7732	135.00	5.21	5.22
02 Jan 04	2117	3.7731	135.00	5.20	5.21
02 Jan 04	2118	3.7731	135.00	5.20	5.21
02 Jan 04	2119	3.7731	135.00	5.20	5.20
02 Jan 04	2120	3.7731	135.00	5.21	5.20
02 Jan 04	2121	3.7731	135.00	5.22	5.21
02 Jan 04	2122	3.7732	135.00	5.23	5.22
02 Jan 04	2123	3.7732	135.00	5.24	5.23
02 Jan 04	2124	3.7732	135.00	5.24	5.23
02 Jan 04	2125	3.7732	135.00	5.24	5.24
02 Jan 04	2126	3.7732	135.00	5.23	5.23
02 Jan 04	2127	3.7732	135.00	5.22	5.23
02 Jan 04	2128	3.7732	135.00	5.21	5.22
02 Jan 04	2129	3.7731	135.00	5.19	5.21
02 Jan 04	2130	3.7731	135.00	5.18	5.19
02 Jan 04	2131	3.7731	135.00	5.16	5.18
02 Jan 04	2132	3.7731	135.00	5.14	5.16
02 Jan 04	2133	3.7730	135.00	5.13	5.15
02 Jan 04	2134	3.7730	135.00	5.13	5.14
02 Jan 04	2135	3.7730	135.00	5.13	5.13
02 Jan 04	2136	3.7730	135.00	5.13	5.13
02 Jan 04	2137	3.7730	135.00	5.14	5.14
02 Jan 04	2138	3.7730	135.00	5.16	5.15
02 Jan 04	2139	3.7731	135.00	5.18	5.16
02 Jan 04	2140	3.7731	135.00	5.19	5.18
02 Jan 04	2141	3.7731	135.00	5.20	5.19
02 Jan 04	2142	3.7731	135.00	5.21	5.20
02 Jan 04	2143	3.7731	135.00	5.20	5.20
02 Jan 04	2144	3.7731	135.00	5.20	5.20
02 Jan 04	2145	3.7731	135.00	5.19	5.20
02 Jan 04	2146	3.7731	135.00	5.18	5.19
02 Jan 04	2147	3.7731	135.00	5.16	5.18
02 Jan 04	2148	3.7731	135.00	5.15	5.16
02 Jan 04	2149	3.7730	135.00	5.13	5.15
02 Jan 04	2150	3.7730	135.00	5.12	5.13
02 Jan 04	2151	3.7730	135.00	5.11	5.12
02 Jan 04	2152	3.7730	135.00	5.09	5.11
02 Jan 04	2153	3.7730	135.00	5.08	5.10
02 Jan 04	2154	3.7729	135.00	5.07	5.08
02 Jan 04	2155	3.7729	135.00	5.06	5.07

Date	Time	Reservoir Storage (ac-ft)	Reservoir Elevation (ft)	Inflow (cfs)	Outflow (cfs)
02 Jan 04	2156	3.7729	135.00	5.06	5.07
02 Jan 04	2157	3.7729	135.00	5.05	5.06
02 Jan 04	2158	3.7729	135.00	5.05	5.05
02 Jan 04	2159	3.7729	135.00	5.04	5.05
02 Jan 04	2200	3.7729	135.00	5.04	5.05
02 Jan 04	2201	3.7729	135.00	5.04	5.04
02 Jan 04	2202	3.7729	135.00	5.03	5.04
02 Jan 04	2203	3.7729	135.00	5.03	5.03
02 Jan 04	2204	3.7729	135.00	5.03	5.03
02 Jan 04	2205	3.7729	135.00	5.03	5.03
02 Jan 04	2206	3.7728	135.00	5.03	5.03
02 Jan 04	2207	3.7728	135.00	5.02	5.03
02 Jan 04	2208	3.7728	135.00	5.02	5.03
02 Jan 04	2209	3.7728	135.00	5.02	5.02
02 Jan 04	2210	3.7728	135.00	5.02	5.02
02 Jan 04	2211	3.7728	135.00	5.02	5.02
02 Jan 04	2212	3.7728	135.00	5.02	5.02
02 Jan 04	2213	3.7728	135.00	5.02	5.02
02 Jan 04	2214	3.7728	135.00	5.02	5.02
02 Jan 04	2215	3.7728	135.00	5.02	5.02
02 Jan 04	2216	3.7728	135.00	5.02	5.02
02 Jan 04	2217	3.7728	135.00	5.02	5.02
02 Jan 04	2218	3.7728	135.00	5.02	5.02
02 Jan 04	2219	3.7728	135.00	5.02	5.02
02 Jan 04	2220	3.7728	135.00	5.02	5.02
02 Jan 04	2221	3.7728	135.00	5.02	5.02
02 Jan 04	2222	3.7728	135.00	5.02	5.02
02 Jan 04	2223	3.7728	135.00	5.02	5.02
02 Jan 04	2224	3.7728	135.00	5.02	5.02
02 Jan 04	2225	3.7728	135.00	5.02	5.02
02 Jan 04	2226	3.7728	135.00	5.02	5.02
02 Jan 04	2227	3.7728	135.00	5.02	5.02
02 Jan 04	2228	3.7728	135.00	5.01	5.02
02 Jan 04	2229	3.7728	135.00	5.00	5.01
02 Jan 04	2230	3.7728	135.00	4.99	5.00
02 Jan 04	2231	3.7728	135.00	4.97	4.99
02 Jan 04	2232	3.7728	135.00	4.95	4.97
02 Jan 04	2233	3.7727	135.00	4.92	4.95
02 Jan 04	2234	3.7727	135.00	4.90	4.93
02 Jan 04	2235	3.7727	135.00	4.88	4.90
02 Jan 04	2236	3.7726	135.00	4.87	4.88
02 Jan 04	2237	3.7726	135.00	4.86	4.87
02 Jan 04	2238	3.7726	135.00	4.86	4.86
02 Jan 04	2239	3.7726	135.00	4.86	4.86
02 Jan 04	2240	3.7726	135.00	4.86	4.86
02 Jan 04	2241	3.7726	135.00	4.87	4.87
02 Jan 04	2242	3.7726	135.00	4.89	4.87
02 Jan 04	2243	3.7726	135.00	4.90	4.89
02 Jan 04	2244	3.7726	135.00	4.91	4.90
02 Jan 04	2245	3.7727	135.00	4.92	4.91
02 Jan 04	2246	3.7727	135.00	4.92	4.92

Date	Time	Reservoir Storage (ac-ft)	Reservoir Elevation (ft)	Inflow (cfs)	Outflow (cfs)
02 Jan 04	2247	3.7727	135.00	4.92	4.92
02 Jan 04	2248	3.7727	135.00	4.91	4.92
02 Jan 04	2249	3.7727	135.00	4.90	4.91
02 Jan 04	2250	3.7726	135.00	4.88	4.90
02 Jan 04	2251	3.7726	135.00	4.86	4.88
02 Jan 04	2252	3.7726	135.00	4.85	4.86
02 Jan 04	2253	3.7726	135.00	4.84	4.85
02 Jan 04	2254	3.7726	135.00	4.83	4.84
02 Jan 04	2255	3.7725	135.00	4.83	4.83
02 Jan 04	2256	3.7726	135.00	4.84	4.84
02 Jan 04	2257	3.7726	135.00	4.84	4.84
02 Jan 04	2258	3.7726	135.00	4.84	4.84
02 Jan 04	2259	3.7726	135.00	4.85	4.85
02 Jan 04	2300	3.7726	135.00	4.84	4.85
02 Jan 04	2301	3.7726	135.00	4.84	4.84
02 Jan 04	2302	3.7725	135.00	4.82	4.83
02 Jan 04	2303	3.7725	135.00	4.81	4.82
02 Jan 04	2304	3.7725	135.00	4.80	4.81
02 Jan 04	2305	3.7725	135.00	4.80	4.81
02 Jan 04	2306	3.7725	135.00	4.80	4.80
02 Jan 04	2307	3.7725	135.00	4.81	4.80
02 Jan 04	2308	3.7725	135.00	4.82	4.81
02 Jan 04	2309	3.7725	135.00	4.83	4.82
02 Jan 04	2310	3.7725	135.00	4.84	4.83
02 Jan 04	2311	3.7726	135.00	4.84	4.84
02 Jan 04	2312	3.7726	135.00	4.85	4.84
02 Jan 04	2313	3.7726	135.00	4.85	4.85
02 Jan 04	2314	3.7726	135.00	4.84	4.85
02 Jan 04	2315	3.7726	135.00	4.83	4.84
02 Jan 04	2316	3.7725	135.00	4.82	4.83
02 Jan 04	2317	3.7725	135.00	4.81	4.82
02 Jan 04	2318	3.7725	135.00	4.80	4.81
02 Jan 04	2319	3.7725	135.00	4.80	4.81
02 Jan 04	2320	3.7725	135.00	4.81	4.81
02 Jan 04	2321	3.7725	135.00	4.82	4.81
02 Jan 04	2322	3.7725	135.00	4.83	4.82
02 Jan 04	2323	3.7725	135.00	4.83	4.82
02 Jan 04	2324	3.7725	135.00	4.83	4.83
02 Jan 04	2325	3.7725	135.00	4.83	4.83
02 Jan 04	2326	3.7725	135.00	4.83	4.83
02 Jan 04	2327	3.7725	135.00	4.81	4.82
02 Jan 04	2328	3.7725	135.00	4.79	4.81
02 Jan 04	2329	3.7725	135.00	4.77	4.79
02 Jan 04	2330	3.7725	135.00	4.75	4.77
02 Jan 04	2331	3.7724	135.00	4.73	4.75
02 Jan 04	2332	3.7724	135.00	4.71	4.73
02 Jan 04	2333	3.7724	135.00	4.70	4.71
02 Jan 04	2334	3.7723	135.00	4.69	4.70
02 Jan 04	2335	3.7723	135.00	4.69	4.69
02 Jan 04	2336	3.7723	135.00	4.70	4.69
02 Jan 04	2337	3.7723	135.00	4.71	4.70

Date	Time	Reservoir Storage (ac-ft)	Reservoir Elevation (ft)	Inflow (cfs)	Outflow (cfs)
02 Jan 04	2338	3.7724	135.00	4.73	4.71
02 Jan 04	2339	3.7724	135.00	4.75	4.73
02 Jan 04	2340	3.7724	135.00	4.77	4.75
02 Jan 04	2341	3.7725	135.00	4.79	4.77
02 Jan 04	2342	3.7725	135.00	4.80	4.79
02 Jan 04	2343	3.7725	135.00	4.81	4.80
02 Jan 04	2344	3.7725	135.00	4.80	4.80
02 Jan 04	2345	3.7725	135.00	4.79	4.80
02 Jan 04	2346	3.7725	135.00	4.78	4.79
02 Jan 04	2347	3.7725	135.00	4.76	4.78
02 Jan 04	2348	3.7724	135.00	4.74	4.76
02 Jan 04	2349	3.7724	135.00	4.72	4.74
02 Jan 04	2350	3.7724	135.00	4.70	4.72
02 Jan 04	2351	3.7724	135.00	4.69	4.71
02 Jan 04	2352	3.7723	135.00	4.68	4.69
02 Jan 04	2353	3.7723	135.00	4.67	4.68
02 Jan 04	2354	3.7723	135.00	4.67	4.67
02 Jan 04	2355	3.7723	135.00	4.66	4.67
02 Jan 04	2356	3.7723	135.00	4.66	4.67
02 Jan 04	2357	3.7723	135.00	4.65	4.66
02 Jan 04	2358	3.7723	135.00	4.64	4.65
02 Jan 04	2359	3.7723	135.00	4.64	4.64
02 Jan 04	2400	3.7723	135.00	4.63	4.64
03 Jan 04	0001	3.7722	135.00	4.61	4.63
03 Jan 04	0002	3.7722	135.00	4.58	4.61
03 Jan 04	0003	3.7722	135.00	4.52	4.57
03 Jan 04	0004	3.7721	135.00	4.43	4.51
03 Jan 04	0005	3.7719	135.00	4.31	4.42
03 Jan 04	0006	3.7718	135.00	4.14	4.29
03 Jan 04	0007	3.7715	135.00	3.93	4.11
03 Jan 04	0008	3.7713	135.00	3.67	3.89
03 Jan 04	0009	3.7709	135.00	3.39	3.63
03 Jan 04	0010	3.7706	135.00	3.10	3.33
03 Jan 04	0011	3.7703	135.00	2.81	3.02
03 Jan 04	0012	3.7700	135.00	2.52	2.71
03 Jan 04	0013	3.7698	135.00	2.24	2.40
03 Jan 04	0014	3.7696	135.00	1.97	2.11
03 Jan 04	0015	3.7694	135.00	1.73	1.84
03 Jan 04	0016	3.7693	135.00	1.51	1.59
03 Jan 04	0017	3.7692	135.00	1.32	1.38
03 Jan 04	0018	3.7691	135.00	1.14	1.19
03 Jan 04	0019	3.7690	135.00	0.99	1.02
03 Jan 04	0020	3.7690	135.00	0.86	0.88
03 Jan 04	0021	3.7690	135.00	0.75	0.76
03 Jan 04	0022	3.7689	135.00	0.65	0.67
03 Jan 04	0023	3.7689	135.00	0.57	0.57
03 Jan 04	0024	3.7689	135.00	0.49	0.50
03 Jan 04	0025	3.7689	135.00	0.43	0.43
03 Jan 04	0026	3.7689	135.00	0.37	0.38
03 Jan 04	0027	3.7689	135.00	0.33	0.32
03 Jan 04	0028	3.7689	135.00	0.28	0.30

Date	Time	Reservoir Storage (ac-ft)	Reservoir Elevation (ft)	Inflow (cfs)	Outflow (cfs)
03 Jan 04	0029	3.7689	135.00	0.25	0.27
03 Jan 04	0030	3.7689	135.00	0.21	0.22
03 Jan 04	0031	3.7689	135.00	0.19	0.23
03 Jan 04	0032	3.7689	135.00	0.16	0.17
03 Jan 04	0033	3.7689	135.00	0.14	0.18
03 Jan 04	0034	3.7689	135.00	0.12	0.00
03 Jan 04	0035	3.7689	135.00	0.11	0.21
03 Jan 04	0036	3.7689	135.00	0.09	0.00
03 Jan 04	0037	3.7689	135.00	0.08	0.14
03 Jan 04	0038	3.7689	135.00	0.07	0.00
03 Jan 04	0039	3.7689	135.00	0.06	0.11
03 Jan 04	0040	3.7689	135.00	0.05	0.00
03 Jan 04	0041	3.7689	135.00	0.04	0.17
03 Jan 04	0042	3.7688	135.00	0.04	0.00
03 Jan 04	0043	3.7689	135.00	0.03	0.00
03 Jan 04	0044	3.7689	135.00	0.03	0.00
03 Jan 04	0045	3.7689	135.00	0.02	0.00
03 Jan 04	0046	3.7689	135.00	0.02	0.07
03 Jan 04	0047	3.7688	135.00	0.02	0.00
03 Jan 04	0048	3.7689	135.00	0.01	0.00
03 Jan 04	0049	3.7689	135.00	0.01	0.03
03 Jan 04	0050	3.7689	135.00	0.01	0.00
03 Jan 04	0051	3.7689	135.00	0.01	0.00
03 Jan 04	0052	3.7689	135.00	0.01	0.00
03 Jan 04	0053	3.7689	135.00	0.01	0.00
03 Jan 04	0054	3.7689	135.00	0.00	0.00
03 Jan 04	0055	3.7689	135.00	0.00	0.00
03 Jan 04	0056	3.7689	135.00	0.00	0.00
03 Jan 04	0057	3.7689	135.00	0.00	0.00
03 Jan 04	0058	3.7689	135.00	0.00	0.00
03 Jan 04	0059	3.7689	135.00	0.00	0.00
03 Jan 04	0100	3.7689	135.00	0.00	0.00
03 Jan 04	0101	3.7689	135.00	0.00	0.00
03 Jan 04	0102	3.7689	135.00	0.00	0.00
03 Jan 04	0103	3.7689	135.00	0.00	0.00
03 Jan 04	0104	3.7689	135.00	0.00	0.00
03 Jan 04	0105	3.7689	135.00	0.00	0.00
03 Jan 04	0106	3.7689	135.00	0.00	0.00
03 Jan 04	0107	3.7689	135.00	0.00	0.00
03 Jan 04	0108	3.7689	135.00	0.00	0.00
03 Jan 04	0109	3.7689	135.00	0.00	0.00
03 Jan 04	0110	3.7689	135.00	0.00	0.00
03 Jan 04	0111	3.7689	135.00	0.00	0.00
03 Jan 04	0112	3.7689	135.00	0.00	0.00
03 Jan 04	0113	3.7689	135.00	0.00	0.00
03 Jan 04	0114	3.7689	135.00	0.00	0.00
03 Jan 04	0115	3.7689	135.00	0.00	0.00
03 Jan 04	0116	3.7689	135.00	0.00	0.00
03 Jan 04	0117	3.7689	135.00	0.00	0.00
03 Jan 04	0118	3.7689	135.00	0.00	0.00
03 Jan 04	0119	3.7689	135.00	0.00	0.00

Date	Time	Reservoir Storage (ac-ft)	Reservoir Elevation (ft)	Inflow (cfs)	Outflow (cfs)
03 Jan 04	0120	3.7689	135.00	0.00	0.00
03 Jan 04	0121	3.7689	135.00	0.00	0.00
03 Jan 04	0122	3.7689	135.00	0.00	0.00
03 Jan 04	0123	3.7689	135.00	0.00	0.00
03 Jan 04	0124	3.7689	135.00	0.00	0.00
03 Jan 04	0125	3.7689	135.00	0.00	0.00
03 Jan 04	0126	3.7689	135.00	0.00	0.00
03 Jan 04	0127	3.7689	135.00	0.00	0.00
03 Jan 04	0128	3.7689	135.00	0.00	0.00
03 Jan 04	0129	3.7689	135.00	0.00	0.00
03 Jan 04	0130	3.7689	135.00	0.00	0.00
03 Jan 04	0131	3.7689	135.00	0.00	0.00
03 Jan 04	0132	3.7689	135.00	0.00	0.00
03 Jan 04	0133	3.7689	135.00	0.00	0.00
03 Jan 04	0134	3.7689	135.00	0.00	0.00
03 Jan 04	0135	3.7689	135.00	0.00	0.00
03 Jan 04	0136	3.7689	135.00	0.00	0.00
03 Jan 04	0137	3.7689	135.00	0.00	0.00
03 Jan 04	0138	3.7689	135.00	0.00	0.00
03 Jan 04	0139	3.7689	135.00	0.00	0.00
03 Jan 04	0140	3.7689	135.00	0.00	0.00
03 Jan 04	0141	3.7689	135.00	0.00	0.00
03 Jan 04	0142	3.7689	135.00	0.00	0.00
03 Jan 04	0143	3.7689	135.00	0.00	0.00
03 Jan 04	0144	3.7689	135.00	0.00	0.00
03 Jan 04	0145	3.7689	135.00	0.00	0.00
03 Jan 04	0146	3.7689	135.00	0.00	0.00
03 Jan 04	0147	3.7689	135.00	0.00	0.00
03 Jan 04	0148	3.7689	135.00	0.00	0.00
03 Jan 04	0149	3.7689	135.00	0.00	0.00
03 Jan 04	0150	3.7689	135.00	0.00	0.00
03 Jan 04	0151	3.7689	135.00	0.00	0.00
03 Jan 04	0152	3.7689	135.00	0.00	0.00
03 Jan 04	0153	3.7689	135.00	0.00	0.00
03 Jan 04	0154	3.7689	135.00	0.00	0.00
03 Jan 04	0155	3.7689	135.00	0.00	0.00
03 Jan 04	0156	3.7689	135.00	0.00	0.00
03 Jan 04	0157	3.7689	135.00	0.00	0.00
03 Jan 04	0158	3.7689	135.00	0.00	0.00
03 Jan 04	0159	3.7689	135.00	0.00	0.00
03 Jan 04	0200	3.7689	135.00	0.00	0.00
03 Jan 04	0201	3.7689	135.00	0.00	0.00
03 Jan 04	0202	3.7689	135.00	0.00	0.00
03 Jan 04	0203	3.7689	135.00	0.00	0.00
03 Jan 04	0204	3.7689	135.00	0.00	0.00
03 Jan 04	0205	3.7689	135.00	0.00	0.00
03 Jan 04	0206	3.7689	135.00	0.00	0.00
03 Jan 04	0207	3.7689	135.00	0.00	0.00
03 Jan 04	0208	3.7689	135.00	0.00	0.00
03 Jan 04	0209	3.7689	135.00	0.00	0.00
03 Jan 04	0210	3.7689	135.00	0.00	0.00

Date	Time	Reservoir Storage (ac-ft)	Reservoir Elevation (ft)	Inflow (cfs)	Outflow (cfs)
03 Jan 04	0211	3.7689	135.00	0.00	0.00
03 Jan 04	0212	3.7689	135.00	0.00	0.00
03 Jan 04	0213	3.7689	135.00	0.00	0.00
03 Jan 04	0214	3.7689	135.00	0.00	0.00
03 Jan 04	0215	3.7689	135.00	0.00	0.00
03 Jan 04	0216	3.7689	135.00	0.00	0.00
03 Jan 04	0217	3.7689	135.00	0.00	0.00
03 Jan 04	0218	3.7689	135.00	0.00	0.00
03 Jan 04	0219	3.7689	135.00	0.00	0.00
03 Jan 04	0220	3.7689	135.00	0.00	0.00
03 Jan 04	0221	3.7689	135.00	0.00	0.00
03 Jan 04	0222	3.7689	135.00	0.00	0.00
03 Jan 04	0223	3.7689	135.00	0.00	0.00
03 Jan 04	0224	3.7689	135.00	0.00	0.00
03 Jan 04	0225	3.7689	135.00	0.00	0.00
03 Jan 04	0226	3.7689	135.00	0.00	0.00
03 Jan 04	0227	3.7689	135.00	0.00	0.00
03 Jan 04	0228	3.7689	135.00	0.00	0.00
03 Jan 04	0229	3.7689	135.00	0.00	0.00
03 Jan 04	0230	3.7689	135.00	0.00	0.00
03 Jan 04	0231	3.7689	135.00	0.00	0.00
03 Jan 04	0232	3.7689	135.00	0.00	0.00
03 Jan 04	0233	3.7689	135.00	0.00	0.00
03 Jan 04	0234	3.7689	135.00	0.00	0.00
03 Jan 04	0235	3.7689	135.00	0.00	0.00
03 Jan 04	0236	3.7689	135.00	0.00	0.00
03 Jan 04	0237	3.7689	135.00	0.00	0.00
03 Jan 04	0238	3.7689	135.00	0.00	0.00
03 Jan 04	0239	3.7689	135.00	0.00	0.00
03 Jan 04	0240	3.7689	135.00	0.00	0.00
03 Jan 04	0241	3.7689	135.00	0.00	0.00
03 Jan 04	0242	3.7689	135.00	0.00	0.00
03 Jan 04	0243	3.7689	135.00	0.00	0.00
03 Jan 04	0244	3.7689	135.00	0.00	0.00
03 Jan 04	0245	3.7689	135.00	0.00	0.00
03 Jan 04	0246	3.7689	135.00	0.00	0.00
03 Jan 04	0247	3.7689	135.00	0.00	0.00
03 Jan 04	0248	3.7689	135.00	0.00	0.00
03 Jan 04	0249	3.7689	135.00	0.00	0.00
03 Jan 04	0250	3.7689	135.00	0.00	0.00
03 Jan 04	0251	3.7689	135.00	0.00	0.00
03 Jan 04	0252	3.7689	135.00	0.00	0.00
03 Jan 04	0253	3.7689	135.00	0.00	0.00
03 Jan 04	0254	3.7689	135.00	0.00	0.00
03 Jan 04	0255	3.7689	135.00	0.00	0.00
03 Jan 04	0256	3.7689	135.00	0.00	0.00
03 Jan 04	0257	3.7689	135.00	0.00	0.00
03 Jan 04	0258	3.7689	135.00	0.00	0.00
03 Jan 04	0259	3.7689	135.00	0.00	0.00
03 Jan 04	0300	3.7689	135.00	0.00	0.00
03 Jan 04	0301	3.7689	135.00	0.00	0.00

Date	Time	Reservoir Storage (ac-ft)	Reservoir Elevation (ft)	Inflow (cfs)	Outflow (cfs)
03 Jan 04	0302	3.7689	135.00	0.00	0.00
03 Jan 04	0303	3.7689	135.00	0.00	0.00
03 Jan 04	0304	3.7689	135.00	0.00	0.00
03 Jan 04	0305	3.7689	135.00	0.00	0.00
03 Jan 04	0306	3.7689	135.00	0.00	0.00
03 Jan 04	0307	3.7689	135.00	0.00	0.00
03 Jan 04	0308	3.7689	135.00	0.00	0.00
03 Jan 04	0309	3.7689	135.00	0.00	0.00
03 Jan 04	0310	3.7689	135.00	0.00	0.00
03 Jan 04	0311	3.7689	135.00	0.00	0.00
03 Jan 04	0312	3.7689	135.00	0.00	0.00
03 Jan 04	0313	3.7689	135.00	0.00	0.00
03 Jan 04	0314	3.7689	135.00	0.00	0.00
03 Jan 04	0315	3.7689	135.00	0.00	0.00
03 Jan 04	0316	3.7689	135.00	0.00	0.00
03 Jan 04	0317	3.7689	135.00	0.00	0.00
03 Jan 04	0318	3.7689	135.00	0.00	0.00
03 Jan 04	0319	3.7689	135.00	0.00	0.00
03 Jan 04	0320	3.7689	135.00	0.00	0.00
03 Jan 04	0321	3.7689	135.00	0.00	0.00
03 Jan 04	0322	3.7689	135.00	0.00	0.00
03 Jan 04	0323	3.7689	135.00	0.00	0.00
03 Jan 04	0324	3.7689	135.00	0.00	0.00
03 Jan 04	0325	3.7689	135.00	0.00	0.00
03 Jan 04	0326	3.7689	135.00	0.00	0.00
03 Jan 04	0327	3.7689	135.00	0.00	0.00
03 Jan 04	0328	3.7689	135.00	0.00	0.00
03 Jan 04	0329	3.7689	135.00	0.00	0.00
03 Jan 04	0330	3.7689	135.00	0.00	0.00
03 Jan 04	0331	3.7689	135.00	0.00	0.00
03 Jan 04	0332	3.7689	135.00	0.00	0.00
03 Jan 04	0333	3.7689	135.00	0.00	0.00
03 Jan 04	0334	3.7689	135.00	0.00	0.00
03 Jan 04	0335	3.7689	135.00	0.00	0.00
03 Jan 04	0336	3.7689	135.00	0.00	0.00
03 Jan 04	0337	3.7689	135.00	0.00	0.00
03 Jan 04	0338	3.7689	135.00	0.00	0.00
03 Jan 04	0339	3.7689	135.00	0.00	0.00
03 Jan 04	0340	3.7689	135.00	0.00	0.00
03 Jan 04	0341	3.7689	135.00	0.00	0.00
03 Jan 04	0342	3.7689	135.00	0.00	0.00
03 Jan 04	0343	3.7689	135.00	0.00	0.00
03 Jan 04	0344	3.7689	135.00	0.00	0.00
03 Jan 04	0345	3.7689	135.00	0.00	0.00
03 Jan 04	0346	3.7689	135.00	0.00	0.00
03 Jan 04	0347	3.7689	135.00	0.00	0.00
03 Jan 04	0348	3.7689	135.00	0.00	0.00
03 Jan 04	0349	3.7689	135.00	0.00	0.00
03 Jan 04	0350	3.7689	135.00	0.00	0.00
03 Jan 04	0351	3.7689	135.00	0.00	0.00
03 Jan 04	0352	3.7689	135.00	0.00	0.00

Date	Time	Reservoir Storage (ac-ft)	Reservoir Elevation (ft)	Inflow (cfs)	Outflow (cfs)
03 Jan 04	0353	3.7689	135.00	0.00	0.00
03 Jan 04	0354	3.7689	135.00	0.00	0.00
03 Jan 04	0355	3.7689	135.00	0.00	0.00
03 Jan 04	0356	3.7689	135.00	0.00	0.00
03 Jan 04	0357	3.7689	135.00	0.00	0.00
03 Jan 04	0358	3.7689	135.00	0.00	0.00
03 Jan 04	0359	3.7689	135.00	0.00	0.00
03 Jan 04	0400	3.7689	135.00	0.00	0.00
03 Jan 04	0401	3.7689	135.00	0.00	0.00
03 Jan 04	0402	3.7689	135.00	0.00	0.00
03 Jan 04	0403	3.7689	135.00	0.00	0.00
03 Jan 04	0404	3.7689	135.00	0.00	0.00
03 Jan 04	0405	3.7689	135.00	0.00	0.00
03 Jan 04	0406	3.7689	135.00	0.00	0.00
03 Jan 04	0407	3.7689	135.00	0.00	0.00
03 Jan 04	0408	3.7689	135.00	0.00	0.00
03 Jan 04	0409	3.7689	135.00	0.00	0.00
03 Jan 04	0410	3.7689	135.00	0.00	0.00
03 Jan 04	0411	3.7689	135.00	0.00	0.00
03 Jan 04	0412	3.7689	135.00	0.00	0.00
03 Jan 04	0413	3.7689	135.00	0.00	0.00
03 Jan 04	0414	3.7689	135.00	0.00	0.00
03 Jan 04	0415	3.7689	135.00	0.00	0.00
03 Jan 04	0416	3.7689	135.00	0.00	0.00
03 Jan 04	0417	3.7689	135.00	0.00	0.00
03 Jan 04	0418	3.7689	135.00	0.00	0.00
03 Jan 04	0419	3.7689	135.00	0.00	0.00
03 Jan 04	0420	3.7689	135.00	0.00	0.00
03 Jan 04	0421	3.7689	135.00	0.00	0.00
03 Jan 04	0422	3.7689	135.00	0.00	0.00
03 Jan 04	0423	3.7689	135.00	0.00	0.00
03 Jan 04	0424	3.7689	135.00	0.00	0.00
03 Jan 04	0425	3.7689	135.00	0.00	0.00
03 Jan 04	0426	3.7689	135.00	0.00	0.00
03 Jan 04	0427	3.7689	135.00	0.00	0.00
03 Jan 04	0428	3.7689	135.00	0.00	0.00
03 Jan 04	0429	3.7689	135.00	0.00	0.00
03 Jan 04	0430	3.7689	135.00	0.00	0.00
03 Jan 04	0431	3.7689	135.00	0.00	0.00
03 Jan 04	0432	3.7689	135.00	0.00	0.00
03 Jan 04	0433	3.7689	135.00	0.00	0.00
03 Jan 04	0434	3.7689	135.00	0.00	0.00
03 Jan 04	0435	3.7689	135.00	0.00	0.00
03 Jan 04	0436	3.7689	135.00	0.00	0.00
03 Jan 04	0437	3.7689	135.00	0.00	0.00
03 Jan 04	0438	3.7689	135.00	0.00	0.00
03 Jan 04	0439	3.7689	135.00	0.00	0.00
03 Jan 04	0440	3.7689	135.00	0.00	0.00
03 Jan 04	0441	3.7689	135.00	0.00	0.00
03 Jan 04	0442	3.7689	135.00	0.00	0.00
03 Jan 04	0443	3.7689	135.00	0.00	0.00

Date	Time	Reservoir Storage (ac-ft)	Reservoir Elevation (ft)	Inflow (cfs)	Outflow (cfs)
03 Jan 04	0444	3.7689	135.00	0.00	0.00
03 Jan 04	0445	3.7689	135.00	0.00	0.00
03 Jan 04	0446	3.7689	135.00	0.00	0.00
03 Jan 04	0447	3.7689	135.00	0.00	0.00
03 Jan 04	0448	3.7689	135.00	0.00	0.00
03 Jan 04	0449	3.7689	135.00	0.00	0.00
03 Jan 04	0450	3.7689	135.00	0.00	0.00
03 Jan 04	0451	3.7689	135.00	0.00	0.00
03 Jan 04	0452	3.7689	135.00	0.00	0.00
03 Jan 04	0453	3.7689	135.00	0.00	0.00
03 Jan 04	0454	3.7689	135.00	0.00	0.00
03 Jan 04	0455	3.7689	135.00	0.00	0.00
03 Jan 04	0456	3.7689	135.00	0.00	0.00
03 Jan 04	0457	3.7689	135.00	0.00	0.00
03 Jan 04	0458	3.7689	135.00	0.00	0.00
03 Jan 04	0459	3.7689	135.00	0.00	0.00
03 Jan 04	0500	3.7689	135.00	0.00	0.00
03 Jan 04	0501	3.7689	135.00	0.00	0.00
03 Jan 04	0502	3.7689	135.00	0.00	0.00
03 Jan 04	0503	3.7689	135.00	0.00	0.00
03 Jan 04	0504	3.7689	135.00	0.00	0.00
03 Jan 04	0505	3.7689	135.00	0.00	0.00
03 Jan 04	0506	3.7689	135.00	0.00	0.00
03 Jan 04	0507	3.7689	135.00	0.00	0.00
03 Jan 04	0508	3.7689	135.00	0.00	0.00
03 Jan 04	0509	3.7689	135.00	0.00	0.00
03 Jan 04	0510	3.7689	135.00	0.00	0.00
03 Jan 04	0511	3.7689	135.00	0.00	0.00
03 Jan 04	0512	3.7689	135.00	0.00	0.00
03 Jan 04	0513	3.7689	135.00	0.00	0.00
03 Jan 04	0514	3.7689	135.00	0.00	0.00
03 Jan 04	0515	3.7689	135.00	0.00	0.00
03 Jan 04	0516	3.7689	135.00	0.00	0.00
03 Jan 04	0517	3.7689	135.00	0.00	0.00
03 Jan 04	0518	3.7689	135.00	0.00	0.00
03 Jan 04	0519	3.7689	135.00	0.00	0.00
03 Jan 04	0520	3.7689	135.00	0.00	0.00
03 Jan 04	0521	3.7689	135.00	0.00	0.00
03 Jan 04	0522	3.7689	135.00	0.00	0.00
03 Jan 04	0523	3.7689	135.00	0.00	0.00
03 Jan 04	0524	3.7689	135.00	0.00	0.00
03 Jan 04	0525	3.7689	135.00	0.00	0.00
03 Jan 04	0526	3.7689	135.00	0.00	0.00
03 Jan 04	0527	3.7689	135.00	0.00	0.00
03 Jan 04	0528	3.7689	135.00	0.00	0.00
03 Jan 04	0529	3.7689	135.00	0.00	0.00
03 Jan 04	0530	3.7689	135.00	0.00	0.00
03 Jan 04	0531	3.7689	135.00	0.00	0.00
03 Jan 04	0532	3.7689	135.00	0.00	0.00
03 Jan 04	0533	3.7689	135.00	0.00	0.00
03 Jan 04	0534	3.7689	135.00	0.00	0.00

Date	Time	Reservoir Storage (ac-ft)	Reservoir Elevation (ft)	Inflow (cfs)	Outflow (cfs)
03 Jan 04	0535	3.7689	135.00	0.00	0.00
03 Jan 04	0536	3.7689	135.00	0.00	0.00
03 Jan 04	0537	3.7689	135.00	0.00	0.00
03 Jan 04	0538	3.7689	135.00	0.00	0.00
03 Jan 04	0539	3.7689	135.00	0.00	0.00
03 Jan 04	0540	3.7689	135.00	0.00	0.00
03 Jan 04	0541	3.7689	135.00	0.00	0.00
03 Jan 04	0542	3.7689	135.00	0.00	0.00
03 Jan 04	0543	3.7689	135.00	0.00	0.00
03 Jan 04	0544	3.7689	135.00	0.00	0.00
03 Jan 04	0545	3.7689	135.00	0.00	0.00
03 Jan 04	0546	3.7689	135.00	0.00	0.00
03 Jan 04	0547	3.7689	135.00	0.00	0.00
03 Jan 04	0548	3.7689	135.00	0.00	0.00
03 Jan 04	0549	3.7689	135.00	0.00	0.00
03 Jan 04	0550	3.7689	135.00	0.00	0.00
03 Jan 04	0551	3.7689	135.00	0.00	0.00
03 Jan 04	0552	3.7689	135.00	0.00	0.00
03 Jan 04	0553	3.7689	135.00	0.00	0.00
03 Jan 04	0554	3.7689	135.00	0.00	0.00
03 Jan 04	0555	3.7689	135.00	0.00	0.00
03 Jan 04	0556	3.7689	135.00	0.00	0.00
03 Jan 04	0557	3.7689	135.00	0.00	0.00
03 Jan 04	0558	3.7689	135.00	0.00	0.00
03 Jan 04	0559	3.7689	135.00	0.00	0.00
03 Jan 04	0600	3.7689	135.00	0.00	0.00
03 Jan 04	0601	3.7689	135.00	0.00	0.00
03 Jan 04	0602	3.7689	135.00	0.00	0.00
03 Jan 04	0603	3.7689	135.00	0.00	0.00
03 Jan 04	0604	3.7689	135.00	0.00	0.00
03 Jan 04	0605	3.7689	135.00	0.00	0.00
03 Jan 04	0606	3.7689	135.00	0.00	0.00
03 Jan 04	0607	3.7689	135.00	0.00	0.00
03 Jan 04	0608	3.7689	135.00	0.00	0.00
03 Jan 04	0609	3.7689	135.00	0.00	0.00
03 Jan 04	0610	3.7689	135.00	0.00	0.00
03 Jan 04	0611	3.7689	135.00	0.00	0.00
03 Jan 04	0612	3.7689	135.00	0.00	0.00
03 Jan 04	0613	3.7689	135.00	0.00	0.00
03 Jan 04	0614	3.7689	135.00	0.00	0.00
03 Jan 04	0615	3.7689	135.00	0.00	0.00
03 Jan 04	0616	3.7689	135.00	0.00	0.00
03 Jan 04	0617	3.7689	135.00	0.00	0.00
03 Jan 04	0618	3.7689	135.00	0.00	0.00
03 Jan 04	0619	3.7689	135.00	0.00	0.00
03 Jan 04	0620	3.7689	135.00	0.00	0.00
03 Jan 04	0621	3.7689	135.00	0.00	0.00
03 Jan 04	0622	3.7689	135.00	0.00	0.00
03 Jan 04	0623	3.7689	135.00	0.00	0.00
03 Jan 04	0624	3.7689	135.00	0.00	0.00
03 Jan 04	0625	3.7689	135.00	0.00	0.00

Date	Time	Reservoir Storage (ac-ft)	Reservoir Elevation (ft)	Inflow (cfs)	Outflow (cfs)
03 Jan 04	0626	3.7689	135.00	0.00	0.00
03 Jan 04	0627	3.7689	135.00	0.00	0.00
03 Jan 04	0628	3.7689	135.00	0.00	0.00
03 Jan 04	0629	3.7689	135.00	0.00	0.00
03 Jan 04	0630	3.7689	135.00	0.00	0.00
03 Jan 04	0631	3.7689	135.00	0.00	0.00
03 Jan 04	0632	3.7689	135.00	0.00	0.00
03 Jan 04	0633	3.7689	135.00	0.00	0.00
03 Jan 04	0634	3.7689	135.00	0.00	0.00
03 Jan 04	0635	3.7689	135.00	0.00	0.00
03 Jan 04	0636	3.7689	135.00	0.00	0.00
03 Jan 04	0637	3.7689	135.00	0.00	0.00
03 Jan 04	0638	3.7689	135.00	0.00	0.00
03 Jan 04	0639	3.7689	135.00	0.00	0.00
03 Jan 04	0640	3.7689	135.00	0.00	0.00
03 Jan 04	0641	3.7689	135.00	0.00	0.00
03 Jan 04	0642	3.7689	135.00	0.00	0.00
03 Jan 04	0643	3.7689	135.00	0.00	0.00
03 Jan 04	0644	3.7689	135.00	0.00	0.00
03 Jan 04	0645	3.7689	135.00	0.00	0.00
03 Jan 04	0646	3.7689	135.00	0.00	0.00
03 Jan 04	0647	3.7689	135.00	0.00	0.00
03 Jan 04	0648	3.7689	135.00	0.00	0.00
03 Jan 04	0649	3.7689	135.00	0.00	0.00
03 Jan 04	0650	3.7689	135.00	0.00	0.00
03 Jan 04	0651	3.7689	135.00	0.00	0.00
03 Jan 04	0652	3.7689	135.00	0.00	0.00
03 Jan 04	0653	3.7689	135.00	0.00	0.00
03 Jan 04	0654	3.7689	135.00	0.00	0.00
03 Jan 04	0655	3.7689	135.00	0.00	0.00
03 Jan 04	0656	3.7689	135.00	0.00	0.00
03 Jan 04	0657	3.7689	135.00	0.00	0.00
03 Jan 04	0658	3.7689	135.00	0.00	0.00
03 Jan 04	0659	3.7689	135.00	0.00	0.00
03 Jan 04	0700	3.7689	135.00	0.00	0.00
03 Jan 04	0701	3.7689	135.00	0.00	0.00
03 Jan 04	0702	3.7689	135.00	0.00	0.00
03 Jan 04	0703	3.7689	135.00	0.00	0.00
03 Jan 04	0704	3.7689	135.00	0.00	0.00
03 Jan 04	0705	3.7689	135.00	0.00	0.00
03 Jan 04	0706	3.7689	135.00	0.00	0.00
03 Jan 04	0707	3.7689	135.00	0.00	0.00
03 Jan 04	0708	3.7689	135.00	0.00	0.00
03 Jan 04	0709	3.7689	135.00	0.00	0.00
03 Jan 04	0710	3.7689	135.00	0.00	0.00
03 Jan 04	0711	3.7689	135.00	0.00	0.00
03 Jan 04	0712	3.7689	135.00	0.00	0.00
03 Jan 04	0713	3.7689	135.00	0.00	0.00
03 Jan 04	0714	3.7689	135.00	0.00	0.00
03 Jan 04	0715	3.7689	135.00	0.00	0.00
03 Jan 04	0716	3.7689	135.00	0.00	0.00

Date	Time	Reservoir Storage (ac-ft)	Reservoir Elevation (ft)	Inflow (cfs)	Outflow (cfs)
03 Jan 04	0717	3.7689	135.00	0.00	0.00
03 Jan 04	0718	3.7689	135.00	0.00	0.00
03 Jan 04	0719	3.7689	135.00	0.00	0.00
03 Jan 04	0720	3.7689	135.00	0.00	0.00
03 Jan 04	0721	3.7689	135.00	0.00	0.00
03 Jan 04	0722	3.7689	135.00	0.00	0.00
03 Jan 04	0723	3.7689	135.00	0.00	0.00
03 Jan 04	0724	3.7689	135.00	0.00	0.00
03 Jan 04	0725	3.7689	135.00	0.00	0.00
03 Jan 04	0726	3.7689	135.00	0.00	0.00
03 Jan 04	0727	3.7689	135.00	0.00	0.00
03 Jan 04	0728	3.7689	135.00	0.00	0.00
03 Jan 04	0729	3.7689	135.00	0.00	0.00
03 Jan 04	0730	3.7689	135.00	0.00	0.00
03 Jan 04	0731	3.7689	135.00	0.00	0.00
03 Jan 04	0732	3.7689	135.00	0.00	0.00
03 Jan 04	0733	3.7689	135.00	0.00	0.00
03 Jan 04	0734	3.7689	135.00	0.00	0.00
03 Jan 04	0735	3.7689	135.00	0.00	0.00
03 Jan 04	0736	3.7689	135.00	0.00	0.00
03 Jan 04	0737	3.7689	135.00	0.00	0.00
03 Jan 04	0738	3.7689	135.00	0.00	0.00
03 Jan 04	0739	3.7689	135.00	0.00	0.00
03 Jan 04	0740	3.7689	135.00	0.00	0.00
03 Jan 04	0741	3.7689	135.00	0.00	0.00
03 Jan 04	0742	3.7689	135.00	0.00	0.00
03 Jan 04	0743	3.7689	135.00	0.00	0.00
03 Jan 04	0744	3.7689	135.00	0.00	0.00
03 Jan 04	0745	3.7689	135.00	0.00	0.00
03 Jan 04	0746	3.7689	135.00	0.00	0.00
03 Jan 04	0747	3.7689	135.00	0.00	0.00
03 Jan 04	0748	3.7689	135.00	0.00	0.00
03 Jan 04	0749	3.7689	135.00	0.00	0.00
03 Jan 04	0750	3.7689	135.00	0.00	0.00
03 Jan 04	0751	3.7689	135.00	0.00	0.00
03 Jan 04	0752	3.7689	135.00	0.00	0.00
03 Jan 04	0753	3.7689	135.00	0.00	0.00
03 Jan 04	0754	3.7689	135.00	0.00	0.00
03 Jan 04	0755	3.7689	135.00	0.00	0.00
03 Jan 04	0756	3.7689	135.00	0.00	0.00
03 Jan 04	0757	3.7689	135.00	0.00	0.00
03 Jan 04	0758	3.7689	135.00	0.00	0.00
03 Jan 04	0759	3.7689	135.00	0.00	0.00
03 Jan 04	0800	3.7689	135.00	0.00	0.00
03 Jan 04	0801	3.7689	135.00	0.00	0.00
03 Jan 04	0802	3.7689	135.00	0.00	0.00
03 Jan 04	0803	3.7689	135.00	0.00	0.00
03 Jan 04	0804	3.7689	135.00	0.00	0.00
03 Jan 04	0805	3.7689	135.00	0.00	0.00
03 Jan 04	0806	3.7689	135.00	0.00	0.00
03 Jan 04	0807	3.7689	135.00	0.00	0.00

Date	Time	Reservoir Storage (ac-ft)	Reservoir Elevation (ft)	Inflow (cfs)	Outflow (cfs)
03 Jan 04	0808	3.7689	135.00	0.00	0.00
03 Jan 04	0809	3.7689	135.00	0.00	0.00
03 Jan 04	0810	3.7689	135.00	0.00	0.00
03 Jan 04	0811	3.7689	135.00	0.00	0.00
03 Jan 04	0812	3.7689	135.00	0.00	0.00
03 Jan 04	0813	3.7689	135.00	0.00	0.00
03 Jan 04	0814	3.7689	135.00	0.00	0.00
03 Jan 04	0815	3.7689	135.00	0.00	0.00
03 Jan 04	0816	3.7689	135.00	0.00	0.00
03 Jan 04	0817	3.7689	135.00	0.00	0.00
03 Jan 04	0818	3.7689	135.00	0.00	0.00
03 Jan 04	0819	3.7689	135.00	0.00	0.00
03 Jan 04	0820	3.7689	135.00	0.00	0.00
03 Jan 04	0821	3.7689	135.00	0.00	0.00
03 Jan 04	0822	3.7689	135.00	0.00	0.00
03 Jan 04	0823	3.7689	135.00	0.00	0.00
03 Jan 04	0824	3.7689	135.00	0.00	0.00
03 Jan 04	0825	3.7689	135.00	0.00	0.00
03 Jan 04	0826	3.7689	135.00	0.00	0.00
03 Jan 04	0827	3.7689	135.00	0.00	0.00
03 Jan 04	0828	3.7689	135.00	0.00	0.00
03 Jan 04	0829	3.7689	135.00	0.00	0.00
03 Jan 04	0830	3.7689	135.00	0.00	0.00
03 Jan 04	0831	3.7689	135.00	0.00	0.00
03 Jan 04	0832	3.7689	135.00	0.00	0.00
03 Jan 04	0833	3.7689	135.00	0.00	0.00
03 Jan 04	0834	3.7689	135.00	0.00	0.00
03 Jan 04	0835	3.7689	135.00	0.00	0.00
03 Jan 04	0836	3.7689	135.00	0.00	0.00
03 Jan 04	0837	3.7689	135.00	0.00	0.00
03 Jan 04	0838	3.7689	135.00	0.00	0.00
03 Jan 04	0839	3.7689	135.00	0.00	0.00
03 Jan 04	0840	3.7689	135.00	0.00	0.00
03 Jan 04	0841	3.7689	135.00	0.00	0.00
03 Jan 04	0842	3.7689	135.00	0.00	0.00
03 Jan 04	0843	3.7689	135.00	0.00	0.00
03 Jan 04	0844	3.7689	135.00	0.00	0.00
03 Jan 04	0845	3.7689	135.00	0.00	0.00
03 Jan 04	0846	3.7689	135.00	0.00	0.00
03 Jan 04	0847	3.7689	135.00	0.00	0.00
03 Jan 04	0848	3.7689	135.00	0.00	0.00
03 Jan 04	0849	3.7689	135.00	0.00	0.00
03 Jan 04	0850	3.7689	135.00	0.00	0.00
03 Jan 04	0851	3.7689	135.00	0.00	0.00
03 Jan 04	0852	3.7689	135.00	0.00	0.00
03 Jan 04	0853	3.7689	135.00	0.00	0.00
03 Jan 04	0854	3.7689	135.00	0.00	0.00
03 Jan 04	0855	3.7689	135.00	0.00	0.00
03 Jan 04	0856	3.7689	135.00	0.00	0.00
03 Jan 04	0857	3.7689	135.00	0.00	0.00
03 Jan 04	0858	3.7689	135.00	0.00	0.00

Date	Time	Reservoir Storage (ac-ft)	Reservoir Elevation (ft)	Inflow (cfs)	Outflow (cfs)
03 Jan 04	0859	3.7689	135.00	0.00	0.00
03 Jan 04	0900	3.7689	135.00	0.00	0.00
03 Jan 04	0901	3.7689	135.00	0.00	0.00
03 Jan 04	0902	3.7689	135.00	0.00	0.00
03 Jan 04	0903	3.7689	135.00	0.00	0.00
03 Jan 04	0904	3.7689	135.00	0.00	0.00
03 Jan 04	0905	3.7689	135.00	0.00	0.00
03 Jan 04	0906	3.7689	135.00	0.00	0.00
03 Jan 04	0907	3.7689	135.00	0.00	0.00
03 Jan 04	0908	3.7689	135.00	0.00	0.00
03 Jan 04	0909	3.7689	135.00	0.00	0.00
03 Jan 04	0910	3.7689	135.00	0.00	0.00
03 Jan 04	0911	3.7689	135.00	0.00	0.00
03 Jan 04	0912	3.7689	135.00	0.00	0.00
03 Jan 04	0913	3.7689	135.00	0.00	0.00
03 Jan 04	0914	3.7689	135.00	0.00	0.00
03 Jan 04	0915	3.7689	135.00	0.00	0.00
03 Jan 04	0916	3.7689	135.00	0.00	0.00
03 Jan 04	0917	3.7689	135.00	0.00	0.00
03 Jan 04	0918	3.7689	135.00	0.00	0.00
03 Jan 04	0919	3.7689	135.00	0.00	0.00
03 Jan 04	0920	3.7689	135.00	0.00	0.00
03 Jan 04	0921	3.7689	135.00	0.00	0.00
03 Jan 04	0922	3.7689	135.00	0.00	0.00
03 Jan 04	0923	3.7689	135.00	0.00	0.00
03 Jan 04	0924	3.7689	135.00	0.00	0.00
03 Jan 04	0925	3.7689	135.00	0.00	0.00
03 Jan 04	0926	3.7689	135.00	0.00	0.00
03 Jan 04	0927	3.7689	135.00	0.00	0.00
03 Jan 04	0928	3.7689	135.00	0.00	0.00
03 Jan 04	0929	3.7689	135.00	0.00	0.00
03 Jan 04	0930	3.7689	135.00	0.00	0.00
03 Jan 04	0931	3.7689	135.00	0.00	0.00
03 Jan 04	0932	3.7689	135.00	0.00	0.00
03 Jan 04	0933	3.7689	135.00	0.00	0.00
03 Jan 04	0934	3.7689	135.00	0.00	0.00
03 Jan 04	0935	3.7689	135.00	0.00	0.00
03 Jan 04	0936	3.7689	135.00	0.00	0.00
03 Jan 04	0937	3.7689	135.00	0.00	0.00
03 Jan 04	0938	3.7689	135.00	0.00	0.00
03 Jan 04	0939	3.7689	135.00	0.00	0.00
03 Jan 04	0940	3.7689	135.00	0.00	0.00
03 Jan 04	0941	3.7689	135.00	0.00	0.00
03 Jan 04	0942	3.7689	135.00	0.00	0.00
03 Jan 04	0943	3.7689	135.00	0.00	0.00
03 Jan 04	0944	3.7689	135.00	0.00	0.00
03 Jan 04	0945	3.7689	135.00	0.00	0.00
03 Jan 04	0946	3.7689	135.00	0.00	0.00
03 Jan 04	0947	3.7689	135.00	0.00	0.00
03 Jan 04	0948	3.7689	135.00	0.00	0.00
03 Jan 04	0949	3.7689	135.00	0.00	0.00

Date	Time	Reservoir Storage (ac-ft)	Reservoir Elevation (ft)	Inflow (cfs)	Outflow (cfs)
03 Jan 04	0950	3.7689	135.00	0.00	0.00
03 Jan 04	0951	3.7689	135.00	0.00	0.00
03 Jan 04	0952	3.7689	135.00	0.00	0.00
03 Jan 04	0953	3.7689	135.00	0.00	0.00
03 Jan 04	0954	3.7689	135.00	0.00	0.00
03 Jan 04	0955	3.7689	135.00	0.00	0.00
03 Jan 04	0956	3.7689	135.00	0.00	0.00
03 Jan 04	0957	3.7689	135.00	0.00	0.00
03 Jan 04	0958	3.7689	135.00	0.00	0.00
03 Jan 04	0959	3.7689	135.00	0.00	0.00
03 Jan 04	1000	3.7689	135.00	0.00	0.00
03 Jan 04	1001	3.7689	135.00	0.00	0.00
03 Jan 04	1002	3.7689	135.00	0.00	0.00
03 Jan 04	1003	3.7689	135.00	0.00	0.00
03 Jan 04	1004	3.7689	135.00	0.00	0.00
03 Jan 04	1005	3.7689	135.00	0.00	0.00
03 Jan 04	1006	3.7689	135.00	0.00	0.00
03 Jan 04	1007	3.7689	135.00	0.00	0.00
03 Jan 04	1008	3.7689	135.00	0.00	0.00
03 Jan 04	1009	3.7689	135.00	0.00	0.00
03 Jan 04	1010	3.7689	135.00	0.00	0.00
03 Jan 04	1011	3.7689	135.00	0.00	0.00
03 Jan 04	1012	3.7689	135.00	0.00	0.00
03 Jan 04	1013	3.7689	135.00	0.00	0.00
03 Jan 04	1014	3.7689	135.00	0.00	0.00
03 Jan 04	1015	3.7689	135.00	0.00	0.00
03 Jan 04	1016	3.7689	135.00	0.00	0.00
03 Jan 04	1017	3.7689	135.00	0.00	0.00
03 Jan 04	1018	3.7689	135.00	0.00	0.00
03 Jan 04	1019	3.7689	135.00	0.00	0.00
03 Jan 04	1020	3.7689	135.00	0.00	0.00
03 Jan 04	1021	3.7689	135.00	0.00	0.00
03 Jan 04	1022	3.7689	135.00	0.00	0.00
03 Jan 04	1023	3.7689	135.00	0.00	0.00
03 Jan 04	1024	3.7689	135.00	0.00	0.00
03 Jan 04	1025	3.7689	135.00	0.00	0.00
03 Jan 04	1026	3.7689	135.00	0.00	0.00
03 Jan 04	1027	3.7689	135.00	0.00	0.00
03 Jan 04	1028	3.7689	135.00	0.00	0.00
03 Jan 04	1029	3.7689	135.00	0.00	0.00
03 Jan 04	1030	3.7689	135.00	0.00	0.00
03 Jan 04	1031	3.7689	135.00	0.00	0.00
03 Jan 04	1032	3.7689	135.00	0.00	0.00
03 Jan 04	1033	3.7689	135.00	0.00	0.00
03 Jan 04	1034	3.7689	135.00	0.00	0.00
03 Jan 04	1035	3.7689	135.00	0.00	0.00
03 Jan 04	1036	3.7689	135.00	0.00	0.00
03 Jan 04	1037	3.7689	135.00	0.00	0.00
03 Jan 04	1038	3.7689	135.00	0.00	0.00
03 Jan 04	1039	3.7689	135.00	0.00	0.00
03 Jan 04	1040	3.7689	135.00	0.00	0.00

Date	Time	Reservoir Storage (ac-ft)	Reservoir Elevation (ft)	Inflow (cfs)	Outflow (cfs)
03 Jan 04	1041	3.7689	135.00	0.00	0.00
03 Jan 04	1042	3.7689	135.00	0.00	0.00
03 Jan 04	1043	3.7689	135.00	0.00	0.00
03 Jan 04	1044	3.7689	135.00	0.00	0.00
03 Jan 04	1045	3.7689	135.00	0.00	0.00
03 Jan 04	1046	3.7689	135.00	0.00	0.00
03 Jan 04	1047	3.7689	135.00	0.00	0.00
03 Jan 04	1048	3.7689	135.00	0.00	0.00
03 Jan 04	1049	3.7689	135.00	0.00	0.00
03 Jan 04	1050	3.7689	135.00	0.00	0.00
03 Jan 04	1051	3.7689	135.00	0.00	0.00
03 Jan 04	1052	3.7689	135.00	0.00	0.00
03 Jan 04	1053	3.7689	135.00	0.00	0.00
03 Jan 04	1054	3.7689	135.00	0.00	0.00
03 Jan 04	1055	3.7689	135.00	0.00	0.00
03 Jan 04	1056	3.7689	135.00	0.00	0.00
03 Jan 04	1057	3.7689	135.00	0.00	0.00
03 Jan 04	1058	3.7689	135.00	0.00	0.00
03 Jan 04	1059	3.7689	135.00	0.00	0.00
03 Jan 04	1100	3.7689	135.00	0.00	0.00
03 Jan 04	1101	3.7689	135.00	0.00	0.00
03 Jan 04	1102	3.7689	135.00	0.00	0.00
03 Jan 04	1103	3.7689	135.00	0.00	0.00
03 Jan 04	1104	3.7689	135.00	0.00	0.00
03 Jan 04	1105	3.7689	135.00	0.00	0.00
03 Jan 04	1106	3.7689	135.00	0.00	0.00
03 Jan 04	1107	3.7689	135.00	0.00	0.00
03 Jan 04	1108	3.7689	135.00	0.00	0.00
03 Jan 04	1109	3.7689	135.00	0.00	0.00
03 Jan 04	1110	3.7689	135.00	0.00	0.00
03 Jan 04	1111	3.7689	135.00	0.00	0.00
03 Jan 04	1112	3.7689	135.00	0.00	0.00
03 Jan 04	1113	3.7689	135.00	0.00	0.00
03 Jan 04	1114	3.7689	135.00	0.00	0.00
03 Jan 04	1115	3.7689	135.00	0.00	0.00
03 Jan 04	1116	3.7689	135.00	0.00	0.00
03 Jan 04	1117	3.7689	135.00	0.00	0.00
03 Jan 04	1118	3.7689	135.00	0.00	0.00
03 Jan 04	1119	3.7689	135.00	0.00	0.00
03 Jan 04	1120	3.7689	135.00	0.00	0.00
03 Jan 04	1121	3.7689	135.00	0.00	0.00
03 Jan 04	1122	3.7689	135.00	0.00	0.00
03 Jan 04	1123	3.7689	135.00	0.00	0.00
03 Jan 04	1124	3.7689	135.00	0.00	0.00
03 Jan 04	1125	3.7689	135.00	0.00	0.00
03 Jan 04	1126	3.7689	135.00	0.00	0.00
03 Jan 04	1127	3.7689	135.00	0.00	0.00
03 Jan 04	1128	3.7689	135.00	0.00	0.00
03 Jan 04	1129	3.7689	135.00	0.00	0.00
03 Jan 04	1130	3.7689	135.00	0.00	0.00
03 Jan 04	1131	3.7689	135.00	0.00	0.00

Date	Time	Reservoir Storage (ac-ft)	Reservoir Elevation (ft)	Inflow (cfs)	Outflow (cfs)
03 Jan 04	1132	3.7689	135.00	0.00	0.00
03 Jan 04	1133	3.7689	135.00	0.00	0.00
03 Jan 04	1134	3.7689	135.00	0.00	0.00
03 Jan 04	1135	3.7689	135.00	0.00	0.00
03 Jan 04	1136	3.7689	135.00	0.00	0.00
03 Jan 04	1137	3.7689	135.00	0.00	0.00
03 Jan 04	1138	3.7689	135.00	0.00	0.00
03 Jan 04	1139	3.7689	135.00	0.00	0.00
03 Jan 04	1140	3.7689	135.00	0.00	0.00
03 Jan 04	1141	3.7689	135.00	0.00	0.00
03 Jan 04	1142	3.7689	135.00	0.00	0.00
03 Jan 04	1143	3.7689	135.00	0.00	0.00
03 Jan 04	1144	3.7689	135.00	0.00	0.00
03 Jan 04	1145	3.7689	135.00	0.00	0.00
03 Jan 04	1146	3.7689	135.00	0.00	0.00
03 Jan 04	1147	3.7689	135.00	0.00	0.00
03 Jan 04	1148	3.7689	135.00	0.00	0.00
03 Jan 04	1149	3.7689	135.00	0.00	0.00
03 Jan 04	1150	3.7689	135.00	0.00	0.00
03 Jan 04	1151	3.7689	135.00	0.00	0.00
03 Jan 04	1152	3.7689	135.00	0.00	0.00
03 Jan 04	1153	3.7689	135.00	0.00	0.00
03 Jan 04	1154	3.7689	135.00	0.00	0.00
03 Jan 04	1155	3.7689	135.00	0.00	0.00
03 Jan 04	1156	3.7689	135.00	0.00	0.00
03 Jan 04	1157	3.7689	135.00	0.00	0.00
03 Jan 04	1158	3.7689	135.00	0.00	0.00
03 Jan 04	1159	3.7689	135.00	0.00	0.00
03 Jan 04	1200	3.7689	135.00	0.00	0.00
03 Jan 04	1201	3.7689	135.00	0.00	0.00
03 Jan 04	1202	3.7689	135.00	0.00	0.00
03 Jan 04	1203	3.7689	135.00	0.00	0.00
03 Jan 04	1204	3.7689	135.00	0.00	0.00
03 Jan 04	1205	3.7689	135.00	0.00	0.00
03 Jan 04	1206	3.7689	135.00	0.00	0.00
03 Jan 04	1207	3.7689	135.00	0.00	0.00
03 Jan 04	1208	3.7689	135.00	0.00	0.00
03 Jan 04	1209	3.7689	135.00	0.00	0.00
03 Jan 04	1210	3.7689	135.00	0.00	0.00
03 Jan 04	1211	3.7689	135.00	0.00	0.00
03 Jan 04	1212	3.7689	135.00	0.00	0.00
03 Jan 04	1213	3.7689	135.00	0.00	0.00
03 Jan 04	1214	3.7689	135.00	0.00	0.00
03 Jan 04	1215	3.7689	135.00	0.00	0.00
03 Jan 04	1216	3.7689	135.00	0.00	0.00
03 Jan 04	1217	3.7689	135.00	0.00	0.00
03 Jan 04	1218	3.7689	135.00	0.00	0.00
03 Jan 04	1219	3.7689	135.00	0.00	0.00
03 Jan 04	1220	3.7689	135.00	0.00	0.00
03 Jan 04	1221	3.7689	135.00	0.00	0.00
03 Jan 04	1222	3.7689	135.00	0.00	0.00

Date	Time	Reservoir Storage (ac-ft)	Reservoir Elevation (ft)	Inflow (cfs)	Outflow (cfs)
03 Jan 04	1223	3.7689	135.00	0.00	0.00
03 Jan 04	1224	3.7689	135.00	0.00	0.00
03 Jan 04	1225	3.7689	135.00	0.00	0.00
03 Jan 04	1226	3.7689	135.00	0.00	0.00
03 Jan 04	1227	3.7689	135.00	0.00	0.00
03 Jan 04	1228	3.7689	135.00	0.00	0.00
03 Jan 04	1229	3.7689	135.00	0.00	0.00
03 Jan 04	1230	3.7689	135.00	0.00	0.00
03 Jan 04	1231	3.7689	135.00	0.00	0.00
03 Jan 04	1232	3.7689	135.00	0.00	0.00
03 Jan 04	1233	3.7689	135.00	0.00	0.00
03 Jan 04	1234	3.7689	135.00	0.00	0.00
03 Jan 04	1235	3.7689	135.00	0.00	0.00
03 Jan 04	1236	3.7689	135.00	0.00	0.00
03 Jan 04	1237	3.7689	135.00	0.00	0.00
03 Jan 04	1238	3.7689	135.00	0.00	0.00
03 Jan 04	1239	3.7689	135.00	0.00	0.00
03 Jan 04	1240	3.7689	135.00	0.00	0.00
03 Jan 04	1241	3.7689	135.00	0.00	0.00
03 Jan 04	1242	3.7689	135.00	0.00	0.00
03 Jan 04	1243	3.7689	135.00	0.00	0.00
03 Jan 04	1244	3.7689	135.00	0.00	0.00
03 Jan 04	1245	3.7689	135.00	0.00	0.00
03 Jan 04	1246	3.7689	135.00	0.00	0.00
03 Jan 04	1247	3.7689	135.00	0.00	0.00
03 Jan 04	1248	3.7689	135.00	0.00	0.00
03 Jan 04	1249	3.7689	135.00	0.00	0.00
03 Jan 04	1250	3.7689	135.00	0.00	0.00
03 Jan 04	1251	3.7689	135.00	0.00	0.00
03 Jan 04	1252	3.7689	135.00	0.00	0.00
03 Jan 04	1253	3.7689	135.00	0.00	0.00
03 Jan 04	1254	3.7689	135.00	0.00	0.00
03 Jan 04	1255	3.7689	135.00	0.00	0.00
03 Jan 04	1256	3.7689	135.00	0.00	0.00
03 Jan 04	1257	3.7689	135.00	0.00	0.00
03 Jan 04	1258	3.7689	135.00	0.00	0.00
03 Jan 04	1259	3.7689	135.00	0.00	0.00
03 Jan 04	1300	3.7689	135.00	0.00	0.00
03 Jan 04	1301	3.7689	135.00	0.00	0.00
03 Jan 04	1302	3.7689	135.00	0.00	0.00
03 Jan 04	1303	3.7689	135.00	0.00	0.00
03 Jan 04	1304	3.7689	135.00	0.00	0.00
03 Jan 04	1305	3.7689	135.00	0.00	0.00
03 Jan 04	1306	3.7689	135.00	0.00	0.00
03 Jan 04	1307	3.7689	135.00	0.00	0.00
03 Jan 04	1308	3.7689	135.00	0.00	0.00
03 Jan 04	1309	3.7689	135.00	0.00	0.00
03 Jan 04	1310	3.7689	135.00	0.00	0.00
03 Jan 04	1311	3.7689	135.00	0.00	0.00
03 Jan 04	1312	3.7689	135.00	0.00	0.00
03 Jan 04	1313	3.7689	135.00	0.00	0.00

Date	Time	Reservoir Storage (ac-ft)	Reservoir Elevation (ft)	Inflow (cfs)	Outflow (cfs)
03 Jan 04	1314	3.7689	135.00	0.00	0.00
03 Jan 04	1315	3.7689	135.00	0.00	0.00
03 Jan 04	1316	3.7689	135.00	0.00	0.00
03 Jan 04	1317	3.7689	135.00	0.00	0.00
03 Jan 04	1318	3.7689	135.00	0.00	0.00
03 Jan 04	1319	3.7689	135.00	0.00	0.00
03 Jan 04	1320	3.7689	135.00	0.00	0.00
03 Jan 04	1321	3.7689	135.00	0.00	0.00
03 Jan 04	1322	3.7689	135.00	0.00	0.00
03 Jan 04	1323	3.7689	135.00	0.00	0.00
03 Jan 04	1324	3.7689	135.00	0.00	0.00
03 Jan 04	1325	3.7689	135.00	0.00	0.00
03 Jan 04	1326	3.7689	135.00	0.00	0.00
03 Jan 04	1327	3.7689	135.00	0.00	0.00
03 Jan 04	1328	3.7689	135.00	0.00	0.00
03 Jan 04	1329	3.7689	135.00	0.00	0.00
03 Jan 04	1330	3.7689	135.00	0.00	0.00
03 Jan 04	1331	3.7689	135.00	0.00	0.00
03 Jan 04	1332	3.7689	135.00	0.00	0.00
03 Jan 04	1333	3.7689	135.00	0.00	0.00
03 Jan 04	1334	3.7689	135.00	0.00	0.00
03 Jan 04	1335	3.7689	135.00	0.00	0.00
03 Jan 04	1336	3.7689	135.00	0.00	0.00
03 Jan 04	1337	3.7689	135.00	0.00	0.00
03 Jan 04	1338	3.7689	135.00	0.00	0.00
03 Jan 04	1339	3.7689	135.00	0.00	0.00
03 Jan 04	1340	3.7689	135.00	0.00	0.00
03 Jan 04	1341	3.7689	135.00	0.00	0.00
03 Jan 04	1342	3.7689	135.00	0.00	0.00
03 Jan 04	1343	3.7689	135.00	0.00	0.00
03 Jan 04	1344	3.7689	135.00	0.00	0.00
03 Jan 04	1345	3.7689	135.00	0.00	0.00
03 Jan 04	1346	3.7689	135.00	0.00	0.00
03 Jan 04	1347	3.7689	135.00	0.00	0.00
03 Jan 04	1348	3.7689	135.00	0.00	0.00
03 Jan 04	1349	3.7689	135.00	0.00	0.00
03 Jan 04	1350	3.7689	135.00	0.00	0.00
03 Jan 04	1351	3.7689	135.00	0.00	0.00
03 Jan 04	1352	3.7689	135.00	0.00	0.00
03 Jan 04	1353	3.7689	135.00	0.00	0.00
03 Jan 04	1354	3.7689	135.00	0.00	0.00
03 Jan 04	1355	3.7689	135.00	0.00	0.00
03 Jan 04	1356	3.7689	135.00	0.00	0.00
03 Jan 04	1357	3.7689	135.00	0.00	0.00
03 Jan 04	1358	3.7689	135.00	0.00	0.00
03 Jan 04	1359	3.7689	135.00	0.00	0.00
03 Jan 04	1400	3.7689	135.00	0.00	0.00
03 Jan 04	1401	3.7689	135.00	0.00	0.00
03 Jan 04	1402	3.7689	135.00	0.00	0.00
03 Jan 04	1403	3.7689	135.00	0.00	0.00
03 Jan 04	1404	3.7689	135.00	0.00	0.00

Date	Time	Reservoir Storage (ac-ft)	Reservoir Elevation (ft)	Inflow (cfs)	Outflow (cfs)
03 Jan 04	1405	3.7689	135.00	0.00	0.00
03 Jan 04	1406	3.7689	135.00	0.00	0.00
03 Jan 04	1407	3.7689	135.00	0.00	0.00
03 Jan 04	1408	3.7689	135.00	0.00	0.00
03 Jan 04	1409	3.7689	135.00	0.00	0.00
03 Jan 04	1410	3.7689	135.00	0.00	0.00
03 Jan 04	1411	3.7689	135.00	0.00	0.00
03 Jan 04	1412	3.7689	135.00	0.00	0.00
03 Jan 04	1413	3.7689	135.00	0.00	0.00
03 Jan 04	1414	3.7689	135.00	0.00	0.00
03 Jan 04	1415	3.7689	135.00	0.00	0.00
03 Jan 04	1416	3.7689	135.00	0.00	0.00
03 Jan 04	1417	3.7689	135.00	0.00	0.00
03 Jan 04	1418	3.7689	135.00	0.00	0.00
03 Jan 04	1419	3.7689	135.00	0.00	0.00
03 Jan 04	1420	3.7689	135.00	0.00	0.00
03 Jan 04	1421	3.7689	135.00	0.00	0.00
03 Jan 04	1422	3.7689	135.00	0.00	0.00
03 Jan 04	1423	3.7689	135.00	0.00	0.00
03 Jan 04	1424	3.7689	135.00	0.00	0.00
03 Jan 04	1425	3.7689	135.00	0.00	0.00
03 Jan 04	1426	3.7689	135.00	0.00	0.00
03 Jan 04	1427	3.7689	135.00	0.00	0.00
03 Jan 04	1428	3.7689	135.00	0.00	0.00
03 Jan 04	1429	3.7689	135.00	0.00	0.00
03 Jan 04	1430	3.7689	135.00	0.00	0.00
03 Jan 04	1431	3.7689	135.00	0.00	0.00
03 Jan 04	1432	3.7689	135.00	0.00	0.00
03 Jan 04	1433	3.7689	135.00	0.00	0.00
03 Jan 04	1434	3.7689	135.00	0.00	0.00
03 Jan 04	1435	3.7689	135.00	0.00	0.00
03 Jan 04	1436	3.7689	135.00	0.00	0.00
03 Jan 04	1437	3.7689	135.00	0.00	0.00
03 Jan 04	1438	3.7689	135.00	0.00	0.00
03 Jan 04	1439	3.7689	135.00	0.00	0.00
03 Jan 04	1440	3.7689	135.00	0.00	0.00
03 Jan 04	1441	3.7689	135.00	0.00	0.00
03 Jan 04	1442	3.7689	135.00	0.00	0.00
03 Jan 04	1443	3.7689	135.00	0.00	0.00
03 Jan 04	1444	3.7689	135.00	0.00	0.00
03 Jan 04	1445	3.7689	135.00	0.00	0.00
03 Jan 04	1446	3.7689	135.00	0.00	0.00
03 Jan 04	1447	3.7689	135.00	0.00	0.00
03 Jan 04	1448	3.7689	135.00	0.00	0.00
03 Jan 04	1449	3.7689	135.00	0.00	0.00
03 Jan 04	1450	3.7689	135.00	0.00	0.00
03 Jan 04	1451	3.7689	135.00	0.00	0.00
03 Jan 04	1452	3.7689	135.00	0.00	0.00
03 Jan 04	1453	3.7689	135.00	0.00	0.00
03 Jan 04	1454	3.7689	135.00	0.00	0.00
03 Jan 04	1455	3.7689	135.00	0.00	0.00

Date	Time	Reservoir Storage (ac-ft)	Reservoir Elevation (ft)	Inflow (cfs)	Outflow (cfs)
03 Jan 04	1456	3.7689	135.00	0.00	0.00
03 Jan 04	1457	3.7689	135.00	0.00	0.00
03 Jan 04	1458	3.7689	135.00	0.00	0.00
03 Jan 04	1459	3.7689	135.00	0.00	0.00
03 Jan 04	1500	3.7689	135.00	0.00	0.00
03 Jan 04	1501	3.7689	135.00	0.00	0.00
03 Jan 04	1502	3.7689	135.00	0.00	0.00
03 Jan 04	1503	3.7689	135.00	0.00	0.00
03 Jan 04	1504	3.7689	135.00	0.00	0.00
03 Jan 04	1505	3.7689	135.00	0.00	0.00
03 Jan 04	1506	3.7689	135.00	0.00	0.00
03 Jan 04	1507	3.7689	135.00	0.00	0.00
03 Jan 04	1508	3.7689	135.00	0.00	0.00
03 Jan 04	1509	3.7689	135.00	0.00	0.00
03 Jan 04	1510	3.7689	135.00	0.00	0.00
03 Jan 04	1511	3.7689	135.00	0.00	0.00
03 Jan 04	1512	3.7689	135.00	0.00	0.00
03 Jan 04	1513	3.7689	135.00	0.00	0.00
03 Jan 04	1514	3.7689	135.00	0.00	0.00
03 Jan 04	1515	3.7689	135.00	0.00	0.00
03 Jan 04	1516	3.7689	135.00	0.00	0.00
03 Jan 04	1517	3.7689	135.00	0.00	0.00
03 Jan 04	1518	3.7689	135.00	0.00	0.00
03 Jan 04	1519	3.7689	135.00	0.00	0.00
03 Jan 04	1520	3.7689	135.00	0.00	0.00
03 Jan 04	1521	3.7689	135.00	0.00	0.00
03 Jan 04	1522	3.7689	135.00	0.00	0.00
03 Jan 04	1523	3.7689	135.00	0.00	0.00
03 Jan 04	1524	3.7689	135.00	0.00	0.00
03 Jan 04	1525	3.7689	135.00	0.00	0.00
03 Jan 04	1526	3.7689	135.00	0.00	0.00
03 Jan 04	1527	3.7689	135.00	0.00	0.00
03 Jan 04	1528	3.7689	135.00	0.00	0.00
03 Jan 04	1529	3.7689	135.00	0.00	0.00
03 Jan 04	1530	3.7689	135.00	0.00	0.00
03 Jan 04	1531	3.7689	135.00	0.00	0.00
03 Jan 04	1532	3.7689	135.00	0.00	0.00
03 Jan 04	1533	3.7689	135.00	0.00	0.00
03 Jan 04	1534	3.7689	135.00	0.00	0.00
03 Jan 04	1535	3.7689	135.00	0.00	0.00
03 Jan 04	1536	3.7689	135.00	0.00	0.00
03 Jan 04	1537	3.7689	135.00	0.00	0.00
03 Jan 04	1538	3.7689	135.00	0.00	0.00
03 Jan 04	1539	3.7689	135.00	0.00	0.00
03 Jan 04	1540	3.7689	135.00	0.00	0.00
03 Jan 04	1541	3.7689	135.00	0.00	0.00
03 Jan 04	1542	3.7689	135.00	0.00	0.00
03 Jan 04	1543	3.7689	135.00	0.00	0.00
03 Jan 04	1544	3.7689	135.00	0.00	0.00
03 Jan 04	1545	3.7689	135.00	0.00	0.00
03 Jan 04	1546	3.7689	135.00	0.00	0.00

Date	Time	Reservoir Storage (ac-ft)	Reservoir Elevation (ft)	Inflow (cfs)	Outflow (cfs)
03 Jan 04	1547	3.7689	135.00	0.00	0.00
03 Jan 04	1548	3.7689	135.00	0.00	0.00
03 Jan 04	1549	3.7689	135.00	0.00	0.00
03 Jan 04	1550	3.7689	135.00	0.00	0.00
03 Jan 04	1551	3.7689	135.00	0.00	0.00
03 Jan 04	1552	3.7689	135.00	0.00	0.00
03 Jan 04	1553	3.7689	135.00	0.00	0.00
03 Jan 04	1554	3.7689	135.00	0.00	0.00
03 Jan 04	1555	3.7689	135.00	0.00	0.00
03 Jan 04	1556	3.7689	135.00	0.00	0.00
03 Jan 04	1557	3.7689	135.00	0.00	0.00
03 Jan 04	1558	3.7689	135.00	0.00	0.00
03 Jan 04	1559	3.7689	135.00	0.00	0.00
03 Jan 04	1600	3.7689	135.00	0.00	0.00
03 Jan 04	1601	3.7689	135.00	0.00	0.00
03 Jan 04	1602	3.7689	135.00	0.00	0.00
03 Jan 04	1603	3.7689	135.00	0.00	0.00
03 Jan 04	1604	3.7689	135.00	0.00	0.00
03 Jan 04	1605	3.7689	135.00	0.00	0.00
03 Jan 04	1606	3.7689	135.00	0.00	0.00
03 Jan 04	1607	3.7689	135.00	0.00	0.00
03 Jan 04	1608	3.7689	135.00	0.00	0.00
03 Jan 04	1609	3.7689	135.00	0.00	0.00
03 Jan 04	1610	3.7689	135.00	0.00	0.00
03 Jan 04	1611	3.7689	135.00	0.00	0.00
03 Jan 04	1612	3.7689	135.00	0.00	0.00
03 Jan 04	1613	3.7689	135.00	0.00	0.00
03 Jan 04	1614	3.7689	135.00	0.00	0.00
03 Jan 04	1615	3.7689	135.00	0.00	0.00
03 Jan 04	1616	3.7689	135.00	0.00	0.00
03 Jan 04	1617	3.7689	135.00	0.00	0.00
03 Jan 04	1618	3.7689	135.00	0.00	0.00
03 Jan 04	1619	3.7689	135.00	0.00	0.00
03 Jan 04	1620	3.7689	135.00	0.00	0.00
03 Jan 04	1621	3.7689	135.00	0.00	0.00
03 Jan 04	1622	3.7689	135.00	0.00	0.00
03 Jan 04	1623	3.7689	135.00	0.00	0.00
03 Jan 04	1624	3.7689	135.00	0.00	0.00
03 Jan 04	1625	3.7689	135.00	0.00	0.00
03 Jan 04	1626	3.7689	135.00	0.00	0.00
03 Jan 04	1627	3.7689	135.00	0.00	0.00
03 Jan 04	1628	3.7689	135.00	0.00	0.00
03 Jan 04	1629	3.7689	135.00	0.00	0.00
03 Jan 04	1630	3.7689	135.00	0.00	0.00
03 Jan 04	1631	3.7689	135.00	0.00	0.00
03 Jan 04	1632	3.7689	135.00	0.00	0.00
03 Jan 04	1633	3.7689	135.00	0.00	0.00
03 Jan 04	1634	3.7689	135.00	0.00	0.00
03 Jan 04	1635	3.7689	135.00	0.00	0.00
03 Jan 04	1636	3.7689	135.00	0.00	0.00
03 Jan 04	1637	3.7689	135.00	0.00	0.00

Date	Time	Reservoir Storage (ac-ft)	Reservoir Elevation (ft)	Inflow (cfs)	Outflow (cfs)
03 Jan 04	1638	3.7689	135.00	0.00	0.00
03 Jan 04	1639	3.7689	135.00	0.00	0.00
03 Jan 04	1640	3.7689	135.00	0.00	0.00
03 Jan 04	1641	3.7689	135.00	0.00	0.00
03 Jan 04	1642	3.7689	135.00	0.00	0.00
03 Jan 04	1643	3.7689	135.00	0.00	0.00
03 Jan 04	1644	3.7689	135.00	0.00	0.00
03 Jan 04	1645	3.7689	135.00	0.00	0.00
03 Jan 04	1646	3.7689	135.00	0.00	0.00
03 Jan 04	1647	3.7689	135.00	0.00	0.00
03 Jan 04	1648	3.7689	135.00	0.00	0.00
03 Jan 04	1649	3.7689	135.00	0.00	0.00
03 Jan 04	1650	3.7689	135.00	0.00	0.00
03 Jan 04	1651	3.7689	135.00	0.00	0.00
03 Jan 04	1652	3.7689	135.00	0.00	0.00
03 Jan 04	1653	3.7689	135.00	0.00	0.00
03 Jan 04	1654	3.7689	135.00	0.00	0.00
03 Jan 04	1655	3.7689	135.00	0.00	0.00
03 Jan 04	1656	3.7689	135.00	0.00	0.00
03 Jan 04	1657	3.7689	135.00	0.00	0.00
03 Jan 04	1658	3.7689	135.00	0.00	0.00
03 Jan 04	1659	3.7689	135.00	0.00	0.00
03 Jan 04	1700	3.7689	135.00	0.00	0.00
03 Jan 04	1701	3.7689	135.00	0.00	0.00
03 Jan 04	1702	3.7689	135.00	0.00	0.00
03 Jan 04	1703	3.7689	135.00	0.00	0.00
03 Jan 04	1704	3.7689	135.00	0.00	0.00
03 Jan 04	1705	3.7689	135.00	0.00	0.00
03 Jan 04	1706	3.7689	135.00	0.00	0.00
03 Jan 04	1707	3.7689	135.00	0.00	0.00
03 Jan 04	1708	3.7689	135.00	0.00	0.00
03 Jan 04	1709	3.7689	135.00	0.00	0.00
03 Jan 04	1710	3.7689	135.00	0.00	0.00
03 Jan 04	1711	3.7689	135.00	0.00	0.00
03 Jan 04	1712	3.7689	135.00	0.00	0.00
03 Jan 04	1713	3.7689	135.00	0.00	0.00
03 Jan 04	1714	3.7689	135.00	0.00	0.00
03 Jan 04	1715	3.7689	135.00	0.00	0.00
03 Jan 04	1716	3.7689	135.00	0.00	0.00
03 Jan 04	1717	3.7689	135.00	0.00	0.00
03 Jan 04	1718	3.7689	135.00	0.00	0.00
03 Jan 04	1719	3.7689	135.00	0.00	0.00
03 Jan 04	1720	3.7689	135.00	0.00	0.00
03 Jan 04	1721	3.7689	135.00	0.00	0.00
03 Jan 04	1722	3.7689	135.00	0.00	0.00
03 Jan 04	1723	3.7689	135.00	0.00	0.00
03 Jan 04	1724	3.7689	135.00	0.00	0.00
03 Jan 04	1725	3.7689	135.00	0.00	0.00
03 Jan 04	1726	3.7689	135.00	0.00	0.00
03 Jan 04	1727	3.7689	135.00	0.00	0.00
03 Jan 04	1728	3.7689	135.00	0.00	0.00

Date	Time	Reservoir Storage (ac-ft)	Reservoir Elevation (ft)	Inflow (cfs)	Outflow (cfs)
03 Jan 04	1729	3.7689	135.00	0.00	0.00
03 Jan 04	1730	3.7689	135.00	0.00	0.00
03 Jan 04	1731	3.7689	135.00	0.00	0.00
03 Jan 04	1732	3.7689	135.00	0.00	0.00
03 Jan 04	1733	3.7689	135.00	0.00	0.00
03 Jan 04	1734	3.7689	135.00	0.00	0.00
03 Jan 04	1735	3.7689	135.00	0.00	0.00
03 Jan 04	1736	3.7689	135.00	0.00	0.00
03 Jan 04	1737	3.7689	135.00	0.00	0.00
03 Jan 04	1738	3.7689	135.00	0.00	0.00
03 Jan 04	1739	3.7689	135.00	0.00	0.00
03 Jan 04	1740	3.7689	135.00	0.00	0.00
03 Jan 04	1741	3.7689	135.00	0.00	0.00
03 Jan 04	1742	3.7689	135.00	0.00	0.00
03 Jan 04	1743	3.7689	135.00	0.00	0.00
03 Jan 04	1744	3.7689	135.00	0.00	0.00
03 Jan 04	1745	3.7689	135.00	0.00	0.00
03 Jan 04	1746	3.7689	135.00	0.00	0.00
03 Jan 04	1747	3.7689	135.00	0.00	0.00
03 Jan 04	1748	3.7689	135.00	0.00	0.00
03 Jan 04	1749	3.7689	135.00	0.00	0.00
03 Jan 04	1750	3.7689	135.00	0.00	0.00
03 Jan 04	1751	3.7689	135.00	0.00	0.00
03 Jan 04	1752	3.7689	135.00	0.00	0.00
03 Jan 04	1753	3.7689	135.00	0.00	0.00
03 Jan 04	1754	3.7689	135.00	0.00	0.00
03 Jan 04	1755	3.7689	135.00	0.00	0.00
03 Jan 04	1756	3.7689	135.00	0.00	0.00
03 Jan 04	1757	3.7689	135.00	0.00	0.00
03 Jan 04	1758	3.7689	135.00	0.00	0.00
03 Jan 04	1759	3.7689	135.00	0.00	0.00
03 Jan 04	1800	3.7689	135.00	0.00	0.00
03 Jan 04	1801	3.7689	135.00	0.00	0.00
03 Jan 04	1802	3.7689	135.00	0.00	0.00
03 Jan 04	1803	3.7689	135.00	0.00	0.00
03 Jan 04	1804	3.7689	135.00	0.00	0.00
03 Jan 04	1805	3.7689	135.00	0.00	0.00
03 Jan 04	1806	3.7689	135.00	0.00	0.00
03 Jan 04	1807	3.7689	135.00	0.00	0.00
03 Jan 04	1808	3.7689	135.00	0.00	0.00
03 Jan 04	1809	3.7689	135.00	0.00	0.00
03 Jan 04	1810	3.7689	135.00	0.00	0.00
03 Jan 04	1811	3.7689	135.00	0.00	0.00
03 Jan 04	1812	3.7689	135.00	0.00	0.00
03 Jan 04	1813	3.7689	135.00	0.00	0.00
03 Jan 04	1814	3.7689	135.00	0.00	0.00
03 Jan 04	1815	3.7689	135.00	0.00	0.00
03 Jan 04	1816	3.7689	135.00	0.00	0.00
03 Jan 04	1817	3.7689	135.00	0.00	0.00
03 Jan 04	1818	3.7689	135.00	0.00	0.00
03 Jan 04	1819	3.7689	135.00	0.00	0.00

Date	Time	Reservoir Storage (ac-ft)	Reservoir Elevation (ft)	Inflow (cfs)	Outflow (cfs)
03 Jan 04	1820	3.7689	135.00	0.00	0.00
03 Jan 04	1821	3.7689	135.00	0.00	0.00
03 Jan 04	1822	3.7689	135.00	0.00	0.00
03 Jan 04	1823	3.7689	135.00	0.00	0.00
03 Jan 04	1824	3.7689	135.00	0.00	0.00
03 Jan 04	1825	3.7689	135.00	0.00	0.00
03 Jan 04	1826	3.7689	135.00	0.00	0.00
03 Jan 04	1827	3.7689	135.00	0.00	0.00
03 Jan 04	1828	3.7689	135.00	0.00	0.00
03 Jan 04	1829	3.7689	135.00	0.00	0.00
03 Jan 04	1830	3.7689	135.00	0.00	0.00
03 Jan 04	1831	3.7689	135.00	0.00	0.00
03 Jan 04	1832	3.7689	135.00	0.00	0.00
03 Jan 04	1833	3.7689	135.00	0.00	0.00
03 Jan 04	1834	3.7689	135.00	0.00	0.00
03 Jan 04	1835	3.7689	135.00	0.00	0.00
03 Jan 04	1836	3.7689	135.00	0.00	0.00
03 Jan 04	1837	3.7689	135.00	0.00	0.00
03 Jan 04	1838	3.7689	135.00	0.00	0.00
03 Jan 04	1839	3.7689	135.00	0.00	0.00
03 Jan 04	1840	3.7689	135.00	0.00	0.00
03 Jan 04	1841	3.7689	135.00	0.00	0.00
03 Jan 04	1842	3.7689	135.00	0.00	0.00
03 Jan 04	1843	3.7689	135.00	0.00	0.00
03 Jan 04	1844	3.7689	135.00	0.00	0.00
03 Jan 04	1845	3.7689	135.00	0.00	0.00
03 Jan 04	1846	3.7689	135.00	0.00	0.00
03 Jan 04	1847	3.7689	135.00	0.00	0.00
03 Jan 04	1848	3.7689	135.00	0.00	0.00
03 Jan 04	1849	3.7689	135.00	0.00	0.00
03 Jan 04	1850	3.7689	135.00	0.00	0.00
03 Jan 04	1851	3.7689	135.00	0.00	0.00
03 Jan 04	1852	3.7689	135.00	0.00	0.00
03 Jan 04	1853	3.7689	135.00	0.00	0.00
03 Jan 04	1854	3.7689	135.00	0.00	0.00
03 Jan 04	1855	3.7689	135.00	0.00	0.00
03 Jan 04	1856	3.7689	135.00	0.00	0.00
03 Jan 04	1857	3.7689	135.00	0.00	0.00
03 Jan 04	1858	3.7689	135.00	0.00	0.00
03 Jan 04	1859	3.7689	135.00	0.00	0.00
03 Jan 04	1900	3.7689	135.00	0.00	0.00
03 Jan 04	1901	3.7689	135.00	0.00	0.00
03 Jan 04	1902	3.7689	135.00	0.00	0.00
03 Jan 04	1903	3.7689	135.00	0.00	0.00
03 Jan 04	1904	3.7689	135.00	0.00	0.00
03 Jan 04	1905	3.7689	135.00	0.00	0.00
03 Jan 04	1906	3.7689	135.00	0.00	0.00
03 Jan 04	1907	3.7689	135.00	0.00	0.00
03 Jan 04	1908	3.7689	135.00	0.00	0.00
03 Jan 04	1909	3.7689	135.00	0.00	0.00
03 Jan 04	1910	3.7689	135.00	0.00	0.00

Date	Time	Reservoir Storage (ac-ft)	Reservoir Elevation (ft)	Inflow (cfs)	Outflow (cfs)
03 Jan 04	1911	3.7689	135.00	0.00	0.00
03 Jan 04	1912	3.7689	135.00	0.00	0.00
03 Jan 04	1913	3.7689	135.00	0.00	0.00
03 Jan 04	1914	3.7689	135.00	0.00	0.00
03 Jan 04	1915	3.7689	135.00	0.00	0.00
03 Jan 04	1916	3.7689	135.00	0.00	0.00
03 Jan 04	1917	3.7689	135.00	0.00	0.00
03 Jan 04	1918	3.7689	135.00	0.00	0.00
03 Jan 04	1919	3.7689	135.00	0.00	0.00
03 Jan 04	1920	3.7689	135.00	0.00	0.00
03 Jan 04	1921	3.7689	135.00	0.00	0.00
03 Jan 04	1922	3.7689	135.00	0.00	0.00
03 Jan 04	1923	3.7689	135.00	0.00	0.00
03 Jan 04	1924	3.7689	135.00	0.00	0.00
03 Jan 04	1925	3.7689	135.00	0.00	0.00
03 Jan 04	1926	3.7689	135.00	0.00	0.00
03 Jan 04	1927	3.7689	135.00	0.00	0.00
03 Jan 04	1928	3.7689	135.00	0.00	0.00
03 Jan 04	1929	3.7689	135.00	0.00	0.00
03 Jan 04	1930	3.7689	135.00	0.00	0.00
03 Jan 04	1931	3.7689	135.00	0.00	0.00
03 Jan 04	1932	3.7689	135.00	0.00	0.00
03 Jan 04	1933	3.7689	135.00	0.00	0.00
03 Jan 04	1934	3.7689	135.00	0.00	0.00
03 Jan 04	1935	3.7689	135.00	0.00	0.00
03 Jan 04	1936	3.7689	135.00	0.00	0.00
03 Jan 04	1937	3.7689	135.00	0.00	0.00
03 Jan 04	1938	3.7689	135.00	0.00	0.00
03 Jan 04	1939	3.7689	135.00	0.00	0.00
03 Jan 04	1940	3.7689	135.00	0.00	0.00
03 Jan 04	1941	3.7689	135.00	0.00	0.00
03 Jan 04	1942	3.7689	135.00	0.00	0.00
03 Jan 04	1943	3.7689	135.00	0.00	0.00
03 Jan 04	1944	3.7689	135.00	0.00	0.00
03 Jan 04	1945	3.7689	135.00	0.00	0.00
03 Jan 04	1946	3.7689	135.00	0.00	0.00
03 Jan 04	1947	3.7689	135.00	0.00	0.00
03 Jan 04	1948	3.7689	135.00	0.00	0.00
03 Jan 04	1949	3.7689	135.00	0.00	0.00
03 Jan 04	1950	3.7689	135.00	0.00	0.00
03 Jan 04	1951	3.7689	135.00	0.00	0.00
03 Jan 04	1952	3.7689	135.00	0.00	0.00
03 Jan 04	1953	3.7689	135.00	0.00	0.00
03 Jan 04	1954	3.7689	135.00	0.00	0.00
03 Jan 04	1955	3.7689	135.00	0.00	0.00
03 Jan 04	1956	3.7689	135.00	0.00	0.00
03 Jan 04	1957	3.7689	135.00	0.00	0.00
03 Jan 04	1958	3.7689	135.00	0.00	0.00
03 Jan 04	1959	3.7689	135.00	0.00	0.00
03 Jan 04	2000	3.7689	135.00	0.00	0.00
03 Jan 04	2001	3.7689	135.00	0.00	0.00

Date	Time	Reservoir Storage (ac-ft)	Reservoir Elevation (ft)	Inflow (cfs)	Outflow (cfs)
03 Jan 04	2002	3.7689	135.00	0.00	0.00
03 Jan 04	2003	3.7689	135.00	0.00	0.00
03 Jan 04	2004	3.7689	135.00	0.00	0.00
03 Jan 04	2005	3.7689	135.00	0.00	0.00
03 Jan 04	2006	3.7689	135.00	0.00	0.00
03 Jan 04	2007	3.7689	135.00	0.00	0.00
03 Jan 04	2008	3.7689	135.00	0.00	0.00
03 Jan 04	2009	3.7689	135.00	0.00	0.00
03 Jan 04	2010	3.7689	135.00	0.00	0.00
03 Jan 04	2011	3.7689	135.00	0.00	0.00
03 Jan 04	2012	3.7689	135.00	0.00	0.00
03 Jan 04	2013	3.7689	135.00	0.00	0.00
03 Jan 04	2014	3.7689	135.00	0.00	0.00
03 Jan 04	2015	3.7689	135.00	0.00	0.00
03 Jan 04	2016	3.7689	135.00	0.00	0.00
03 Jan 04	2017	3.7689	135.00	0.00	0.00
03 Jan 04	2018	3.7689	135.00	0.00	0.00
03 Jan 04	2019	3.7689	135.00	0.00	0.00
03 Jan 04	2020	3.7689	135.00	0.00	0.00
03 Jan 04	2021	3.7689	135.00	0.00	0.00
03 Jan 04	2022	3.7689	135.00	0.00	0.00
03 Jan 04	2023	3.7689	135.00	0.00	0.00
03 Jan 04	2024	3.7689	135.00	0.00	0.00
03 Jan 04	2025	3.7689	135.00	0.00	0.00
03 Jan 04	2026	3.7689	135.00	0.00	0.00
03 Jan 04	2027	3.7689	135.00	0.00	0.00
03 Jan 04	2028	3.7689	135.00	0.00	0.00
03 Jan 04	2029	3.7689	135.00	0.00	0.00
03 Jan 04	2030	3.7689	135.00	0.00	0.00
03 Jan 04	2031	3.7689	135.00	0.00	0.00
03 Jan 04	2032	3.7689	135.00	0.00	0.00
03 Jan 04	2033	3.7689	135.00	0.00	0.00
03 Jan 04	2034	3.7689	135.00	0.00	0.00
03 Jan 04	2035	3.7689	135.00	0.00	0.00
03 Jan 04	2036	3.7689	135.00	0.00	0.00
03 Jan 04	2037	3.7689	135.00	0.00	0.00
03 Jan 04	2038	3.7689	135.00	0.00	0.00
03 Jan 04	2039	3.7689	135.00	0.00	0.00
03 Jan 04	2040	3.7689	135.00	0.00	0.00
03 Jan 04	2041	3.7689	135.00	0.00	0.00
03 Jan 04	2042	3.7689	135.00	0.00	0.00
03 Jan 04	2043	3.7689	135.00	0.00	0.00
03 Jan 04	2044	3.7689	135.00	0.00	0.00
03 Jan 04	2045	3.7689	135.00	0.00	0.00
03 Jan 04	2046	3.7689	135.00	0.00	0.00
03 Jan 04	2047	3.7689	135.00	0.00	0.00
03 Jan 04	2048	3.7689	135.00	0.00	0.00
03 Jan 04	2049	3.7689	135.00	0.00	0.00
03 Jan 04	2050	3.7689	135.00	0.00	0.00
03 Jan 04	2051	3.7689	135.00	0.00	0.00
03 Jan 04	2052	3.7689	135.00	0.00	0.00

Date	Time	Reservoir Storage (ac-ft)	Reservoir Elevation (ft)	Inflow (cfs)	Outflow (cfs)
03 Jan 04	2053	3.7689	135.00	0.00	0.00
03 Jan 04	2054	3.7689	135.00	0.00	0.00
03 Jan 04	2055	3.7689	135.00	0.00	0.00
03 Jan 04	2056	3.7689	135.00	0.00	0.00
03 Jan 04	2057	3.7689	135.00	0.00	0.00
03 Jan 04	2058	3.7689	135.00	0.00	0.00
03 Jan 04	2059	3.7689	135.00	0.00	0.00
03 Jan 04	2100	3.7689	135.00	0.00	0.00
03 Jan 04	2101	3.7689	135.00	0.00	0.00
03 Jan 04	2102	3.7689	135.00	0.00	0.00
03 Jan 04	2103	3.7689	135.00	0.00	0.00
03 Jan 04	2104	3.7689	135.00	0.00	0.00
03 Jan 04	2105	3.7689	135.00	0.00	0.00
03 Jan 04	2106	3.7689	135.00	0.00	0.00
03 Jan 04	2107	3.7689	135.00	0.00	0.00
03 Jan 04	2108	3.7689	135.00	0.00	0.00
03 Jan 04	2109	3.7689	135.00	0.00	0.00
03 Jan 04	2110	3.7689	135.00	0.00	0.00
03 Jan 04	2111	3.7689	135.00	0.00	0.00
03 Jan 04	2112	3.7689	135.00	0.00	0.00
03 Jan 04	2113	3.7689	135.00	0.00	0.00
03 Jan 04	2114	3.7689	135.00	0.00	0.00
03 Jan 04	2115	3.7689	135.00	0.00	0.00
03 Jan 04	2116	3.7689	135.00	0.00	0.00
03 Jan 04	2117	3.7689	135.00	0.00	0.00
03 Jan 04	2118	3.7689	135.00	0.00	0.00
03 Jan 04	2119	3.7689	135.00	0.00	0.00
03 Jan 04	2120	3.7689	135.00	0.00	0.00
03 Jan 04	2121	3.7689	135.00	0.00	0.00
03 Jan 04	2122	3.7689	135.00	0.00	0.00
03 Jan 04	2123	3.7689	135.00	0.00	0.00
03 Jan 04	2124	3.7689	135.00	0.00	0.00
03 Jan 04	2125	3.7689	135.00	0.00	0.00
03 Jan 04	2126	3.7689	135.00	0.00	0.00
03 Jan 04	2127	3.7689	135.00	0.00	0.00
03 Jan 04	2128	3.7689	135.00	0.00	0.00
03 Jan 04	2129	3.7689	135.00	0.00	0.00
03 Jan 04	2130	3.7689	135.00	0.00	0.00
03 Jan 04	2131	3.7689	135.00	0.00	0.00
03 Jan 04	2132	3.7689	135.00	0.00	0.00
03 Jan 04	2133	3.7689	135.00	0.00	0.00
03 Jan 04	2134	3.7689	135.00	0.00	0.00
03 Jan 04	2135	3.7689	135.00	0.00	0.00
03 Jan 04	2136	3.7689	135.00	0.00	0.00
03 Jan 04	2137	3.7689	135.00	0.00	0.00
03 Jan 04	2138	3.7689	135.00	0.00	0.00
03 Jan 04	2139	3.7689	135.00	0.00	0.00
03 Jan 04	2140	3.7689	135.00	0.00	0.00
03 Jan 04	2141	3.7689	135.00	0.00	0.00
03 Jan 04	2142	3.7689	135.00	0.00	0.00
03 Jan 04	2143	3.7689	135.00	0.00	0.00

Date	Time	Reservoir Storage (ac-ft)	Reservoir Elevation (ft)	Inflow (cfs)	Outflow (cfs)
03 Jan 04	2144	3.7689	135.00	0.00	0.00
03 Jan 04	2145	3.7689	135.00	0.00	0.00
03 Jan 04	2146	3.7689	135.00	0.00	0.00
03 Jan 04	2147	3.7689	135.00	0.00	0.00
03 Jan 04	2148	3.7689	135.00	0.00	0.00
03 Jan 04	2149	3.7689	135.00	0.00	0.00
03 Jan 04	2150	3.7689	135.00	0.00	0.00
03 Jan 04	2151	3.7689	135.00	0.00	0.00
03 Jan 04	2152	3.7689	135.00	0.00	0.00
03 Jan 04	2153	3.7689	135.00	0.00	0.00
03 Jan 04	2154	3.7689	135.00	0.00	0.00
03 Jan 04	2155	3.7689	135.00	0.00	0.00
03 Jan 04	2156	3.7689	135.00	0.00	0.00
03 Jan 04	2157	3.7689	135.00	0.00	0.00
03 Jan 04	2158	3.7689	135.00	0.00	0.00
03 Jan 04	2159	3.7689	135.00	0.00	0.00
03 Jan 04	2200	3.7689	135.00	0.00	0.00
03 Jan 04	2201	3.7689	135.00	0.00	0.00
03 Jan 04	2202	3.7689	135.00	0.00	0.00
03 Jan 04	2203	3.7689	135.00	0.00	0.00
03 Jan 04	2204	3.7689	135.00	0.00	0.00
03 Jan 04	2205	3.7689	135.00	0.00	0.00
03 Jan 04	2206	3.7689	135.00	0.00	0.00
03 Jan 04	2207	3.7689	135.00	0.00	0.00
03 Jan 04	2208	3.7689	135.00	0.00	0.00
03 Jan 04	2209	3.7689	135.00	0.00	0.00
03 Jan 04	2210	3.7689	135.00	0.00	0.00
03 Jan 04	2211	3.7689	135.00	0.00	0.00
03 Jan 04	2212	3.7689	135.00	0.00	0.00
03 Jan 04	2213	3.7689	135.00	0.00	0.00
03 Jan 04	2214	3.7689	135.00	0.00	0.00
03 Jan 04	2215	3.7689	135.00	0.00	0.00
03 Jan 04	2216	3.7689	135.00	0.00	0.00
03 Jan 04	2217	3.7689	135.00	0.00	0.00
03 Jan 04	2218	3.7689	135.00	0.00	0.00
03 Jan 04	2219	3.7689	135.00	0.00	0.00
03 Jan 04	2220	3.7689	135.00	0.00	0.00
03 Jan 04	2221	3.7689	135.00	0.00	0.00
03 Jan 04	2222	3.7689	135.00	0.00	0.00
03 Jan 04	2223	3.7689	135.00	0.00	0.00
03 Jan 04	2224	3.7689	135.00	0.00	0.00
03 Jan 04	2225	3.7689	135.00	0.00	0.00
03 Jan 04	2226	3.7689	135.00	0.00	0.00
03 Jan 04	2227	3.7689	135.00	0.00	0.00
03 Jan 04	2228	3.7689	135.00	0.00	0.00
03 Jan 04	2229	3.7689	135.00	0.00	0.00
03 Jan 04	2230	3.7689	135.00	0.00	0.00
03 Jan 04	2231	3.7689	135.00	0.00	0.00
03 Jan 04	2232	3.7689	135.00	0.00	0.00
03 Jan 04	2233	3.7689	135.00	0.00	0.00
03 Jan 04	2234	3.7689	135.00	0.00	0.00

Date	Time	Reservoir Storage (ac-ft)	Reservoir Elevation (ft)	Inflow (cfs)	Outflow (cfs)
03 Jan 04	2235	3.7689	135.00	0.00	0.00
03 Jan 04	2236	3.7689	135.00	0.00	0.00
03 Jan 04	2237	3.7689	135.00	0.00	0.00
03 Jan 04	2238	3.7689	135.00	0.00	0.00
03 Jan 04	2239	3.7689	135.00	0.00	0.00
03 Jan 04	2240	3.7689	135.00	0.00	0.00
03 Jan 04	2241	3.7689	135.00	0.00	0.00
03 Jan 04	2242	3.7689	135.00	0.00	0.00
03 Jan 04	2243	3.7689	135.00	0.00	0.00
03 Jan 04	2244	3.7689	135.00	0.00	0.00
03 Jan 04	2245	3.7689	135.00	0.00	0.00
03 Jan 04	2246	3.7689	135.00	0.00	0.00
03 Jan 04	2247	3.7689	135.00	0.00	0.00
03 Jan 04	2248	3.7689	135.00	0.00	0.00
03 Jan 04	2249	3.7689	135.00	0.00	0.00
03 Jan 04	2250	3.7689	135.00	0.00	0.00
03 Jan 04	2251	3.7689	135.00	0.00	0.00
03 Jan 04	2252	3.7689	135.00	0.00	0.00
03 Jan 04	2253	3.7689	135.00	0.00	0.00
03 Jan 04	2254	3.7689	135.00	0.00	0.00
03 Jan 04	2255	3.7689	135.00	0.00	0.00
03 Jan 04	2256	3.7689	135.00	0.00	0.00
03 Jan 04	2257	3.7689	135.00	0.00	0.00
03 Jan 04	2258	3.7689	135.00	0.00	0.00
03 Jan 04	2259	3.7689	135.00	0.00	0.00
03 Jan 04	2300	3.7689	135.00	0.00	0.00
03 Jan 04	2301	3.7689	135.00	0.00	0.00
03 Jan 04	2302	3.7689	135.00	0.00	0.00
03 Jan 04	2303	3.7689	135.00	0.00	0.00
03 Jan 04	2304	3.7689	135.00	0.00	0.00
03 Jan 04	2305	3.7689	135.00	0.00	0.00
03 Jan 04	2306	3.7689	135.00	0.00	0.00
03 Jan 04	2307	3.7689	135.00	0.00	0.00
03 Jan 04	2308	3.7689	135.00	0.00	0.00
03 Jan 04	2309	3.7689	135.00	0.00	0.00
03 Jan 04	2310	3.7689	135.00	0.00	0.00
03 Jan 04	2311	3.7689	135.00	0.00	0.00
03 Jan 04	2312	3.7689	135.00	0.00	0.00
03 Jan 04	2313	3.7689	135.00	0.00	0.00
03 Jan 04	2314	3.7689	135.00	0.00	0.00
03 Jan 04	2315	3.7689	135.00	0.00	0.00
03 Jan 04	2316	3.7689	135.00	0.00	0.00
03 Jan 04	2317	3.7689	135.00	0.00	0.00
03 Jan 04	2318	3.7689	135.00	0.00	0.00
03 Jan 04	2319	3.7689	135.00	0.00	0.00
03 Jan 04	2320	3.7689	135.00	0.00	0.00
03 Jan 04	2321	3.7689	135.00	0.00	0.00
03 Jan 04	2322	3.7689	135.00	0.00	0.00
03 Jan 04	2323	3.7689	135.00	0.00	0.00
03 Jan 04	2324	3.7689	135.00	0.00	0.00
03 Jan 04	2325	3.7689	135.00	0.00	0.00

Date	Time	Reservoir Storage (ac-ft)	Reservoir Elevation (ft)	Inflow (cfs)	Outflow (cfs)
03 Jan 04	2326	3.7689	135.00	0.00	0.00
03 Jan 04	2327	3.7689	135.00	0.00	0.00
03 Jan 04	2328	3.7689	135.00	0.00	0.00
03 Jan 04	2329	3.7689	135.00	0.00	0.00
03 Jan 04	2330	3.7689	135.00	0.00	0.00
03 Jan 04	2331	3.7689	135.00	0.00	0.00
03 Jan 04	2332	3.7689	135.00	0.00	0.00
03 Jan 04	2333	3.7689	135.00	0.00	0.00
03 Jan 04	2334	3.7689	135.00	0.00	0.00
03 Jan 04	2335	3.7689	135.00	0.00	0.00
03 Jan 04	2336	3.7689	135.00	0.00	0.00
03 Jan 04	2337	3.7689	135.00	0.00	0.00
03 Jan 04	2338	3.7689	135.00	0.00	0.00
03 Jan 04	2339	3.7689	135.00	0.00	0.00
03 Jan 04	2340	3.7689	135.00	0.00	0.00
03 Jan 04	2341	3.7689	135.00	0.00	0.00
03 Jan 04	2342	3.7689	135.00	0.00	0.00
03 Jan 04	2343	3.7689	135.00	0.00	0.00
03 Jan 04	2344	3.7689	135.00	0.00	0.00
03 Jan 04	2345	3.7689	135.00	0.00	0.00
03 Jan 04	2346	3.7689	135.00	0.00	0.00
03 Jan 04	2347	3.7689	135.00	0.00	0.00
03 Jan 04	2348	3.7689	135.00	0.00	0.00
03 Jan 04	2349	3.7689	135.00	0.00	0.00
03 Jan 04	2350	3.7689	135.00	0.00	0.00
03 Jan 04	2351	3.7689	135.00	0.00	0.00
03 Jan 04	2352	3.7689	135.00	0.00	0.00
03 Jan 04	2353	3.7689	135.00	0.00	0.00
03 Jan 04	2354	3.7689	135.00	0.00	0.00
03 Jan 04	2355	3.7689	135.00	0.00	0.00
03 Jan 04	2356	3.7689	135.00	0.00	0.00
03 Jan 04	2357	3.7689	135.00	0.00	0.00
03 Jan 04	2358	3.7689	135.00	0.00	0.00
03 Jan 04	2359	3.7689	135.00	0.00	0.00
03 Jan 04	2400	3.7689	135.00	0.00	0.00

CLOSURE

CLOSURE - PRAIRIE POND PLAZA ADDITION

PT 01	North: 9774.4881		East : 11767.8556
Line	Course: N 00-51-59 W	Length: 658.2600	
PT 02	North: 10432.6728		East : 11757.9022
Line	Course: N 88-59-45 E	Length: 1317.5200	
PT 03	North: 10455.7625		East : 13075.2199
Line	Course: S 00-51-16 E	Length: 659.7300	
PT 04	North: 9796.1059		East : 13085.0580
Line	Course: S 89-03-35 W	Length: 1317.3800	
PT 01	North: 9774.4874		East : 11767.8554

STAFF REPORT
(One-Step Final Plat)

CASE NUMBER: SUB 2004-125 -- PRAIRIE POND PLAZA ADDITION

OWNER/APPLICANT: Property Management Corp., Attn: Dan Taylor, Jr., 1938 N. Woodlawn, Suite 400, Wichita, KS 67208

SURVEYOR/ENGINEER: Baughman Company, P.A., 315 Ellis St., Wichita, KS 67211

LOCATION: Northeast corner of Kellogg and 143rd St. East

SITE SIZE: 16.91 acres

NUMBER OF LOTS

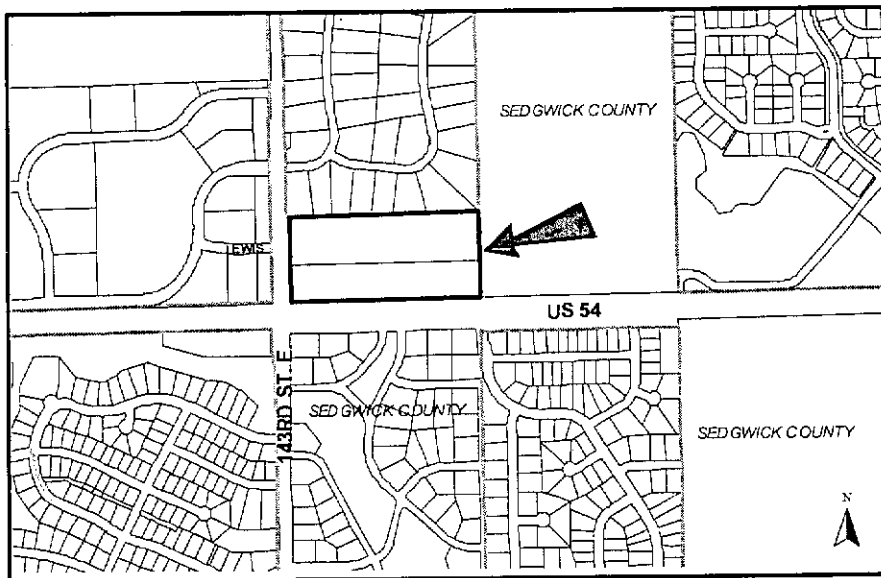
Residential:	
Office:	
Commercial:	6
Industrial:	—
Total:	6

MINIMUM LOT AREA: 16.91 acres

CURRENT ZONING: SF-5, Single-Family Residential

PROPOSED ZONING: LC, Limited Commercial

VICINITY MAP



SUB 2004-125 -- One-Step Final Plat of PRAIRIE POND PLAZA ADDITION
October 14, 2004 - Page 2

NOTE: The site has been approved for a zone change (ZON 2003-74) from SF-5, Single-Family Residential to LC, Limited Commercial. The Prairie Pond Plaza Community Unit Plan (CUP 2003-65, DP-273) was also approved for this site.

STAFF COMMENTS:

- A. The applicant shall guarantee the extension of sanitary sewer and City water to serve the lots being platted.
- B. If improvements are guaranteed by petition, a notarized certificate listing the petitions shall be submitted to the Planning Department for recording.
- C. City Engineering needs to comment on the status of the applicant's drainage plan.
- D. In accordance with the CUP, the following transportation improvements are required:

The applicant shall agree to share the cost of the following improvements: dual southbound left turn lanes from 143rd to Kellogg, dual left turn lanes from Kellogg to 143rd, exclusive southbound right turn lane from 143rd to Kellogg, exclusive westbound right turn lane from Kellogg to 143rd and traffic signal modification at 143rd Street East and Kellogg.
- E. The plat's text needs to address ownership and maintenance of Reserve A.
- F. The triangular parcel at the southwest corner of Lot 2, Block B should be depicted as Reserve B or dedicated as right-of-way.
- G. Traffic Engineering requests that the language included in the CUP General Provisions paragraph 9.B. and 9.C. referencing the crossover median and opening along U.S. 54 Highway shall be included in the plat's text.
- H. Access controls have been platted in accordance with the CUP approval. The plat proposes a joint access opening along 143rd St. East.
- I. In accordance with the CUP approval, a cross-lot circulation agreement is needed to assure internal vehicular movement between the lots.
- J. Provisions shall be made for ownership and maintenance of the proposed reserves. The applicant shall either form a lot owners' association prior to recording the plat or shall submit a covenant stating when the association will be formed, when the reserves will be deeded to the association and who is to own and maintain the reserves prior to the association taking over those responsibilities.
- K. For those reserves being platted for drainage purposes, the required covenant which provides for ownership and maintenance of the reserves shall grant, to the City, the authority to maintain the drainage reserves in the event the owner(s) fail to do so. The covenant shall provide for the cost of such maintenance to be charged back to the owner(s) by the governing body.
- L. The perimeters of the proposed lots shall match the perimeters of the CUP parcel boundaries. A CUP adjustment will need to be approved.

SUB 2004-125 -- One-Step Final Plat of PRAIRIE POND PLAZA ADDITION
October 14, 2004 - Page 3

- M. A CUP Certificate shall be submitted to MAPD prior to City Council consideration, identifying the approved CUP and its special conditions for development on this property.
- N. According to the platting binder, a pipeline easement has been granted over this plat. The applicant shall either obtain a release of the easement or provide proof that the easement has been confined. If confined, any portion of this easement if on this plat shall be shown and the pipeline's name and recording information shown.
- O. The MAPC signature block needs to reference "Morris K. Dunlap, Chair".
- P. The platting text shall include language that a drainage plan has been developed for the plat and that all drainage easements, rights-of-way, or reserves shall remain at established grades or as modified with the approval of the applicable City or County Engineer, and unobstructed to allow for the conveyance of stormwater.
- Q. The applicant shall install or guarantee the installation of all utilities and facilities that are applicable and described in Article 8 of the MAPC Subdivision Regulations. (Water service and fire hydrants required by Article 8 for fire protection shall be as per the direction and approval of the Chief of the Fire Department.)
- R. The applicant's engineer is advised that the Register of Deeds is requiring the name(s) of the notary public, who acknowledges the signatures on this plat, to be printed beneath the notary's signature.
- S. To receive mail delivery without delay, and to avoid unnecessary expense, the applicant is advised of the necessity to meet with the U.S. Postal Service Growth Management Coordinator (Phone: 316-946-4556) prior to development of the plat so that the type of delivery, and the tentative mailbox locations can be determined.
- T. The applicant is advised that various State and Federal requirements (specifically but not limited to the Army Corps of Engineers, Kanopolis Project Office, Rt. 1, Box 317, Valley Center, KS 67147) for the control of soil and wind erosion and the protection of wetlands may impact how this site can be developed. It is the applicant's responsibility to contact all appropriate agencies to determine any such requirements.
- U. The owner of the subdivision should note that any construction that results in earthwork activities that will disturb one (1) acre or more of ground cover requires a Federal/State NPDES Storm Water Discharge Permit from the Kansas Department of Health and Environment in Topeka. Also, for projects located within the City of Wichita, erosion and sediment control devices must be used on ALL projects. For projects outside of the City of Wichita, but within the Wichita Metropolitan area, the owner should contact the appropriate governmental jurisdiction concerning erosion and sediment control device requirements.
- V. Perimeter closure computations shall be submitted with the final plat tracing.
- W. Recording of the plat within 30 days after approval by the City Council and/or County Commission.
- X. The representatives from the utility companies should be prepared to comment on the need for any additional utility easements to be platted on this property.

SUB 2004-125 -- One-Step Final Plat of PRAIRIE POND PLAZA ADDITION
October 14, 2004 - Page 4

- Y. The applicant is reminded that a compact disc (CD) shall be submitted with the final plat tracing to the Planning Department detailing this plat in digital format in AutoCAD, or sent via e-mail to MAPD (cholloway@wichita.gov). This will be used by the City and County GIS Department.