

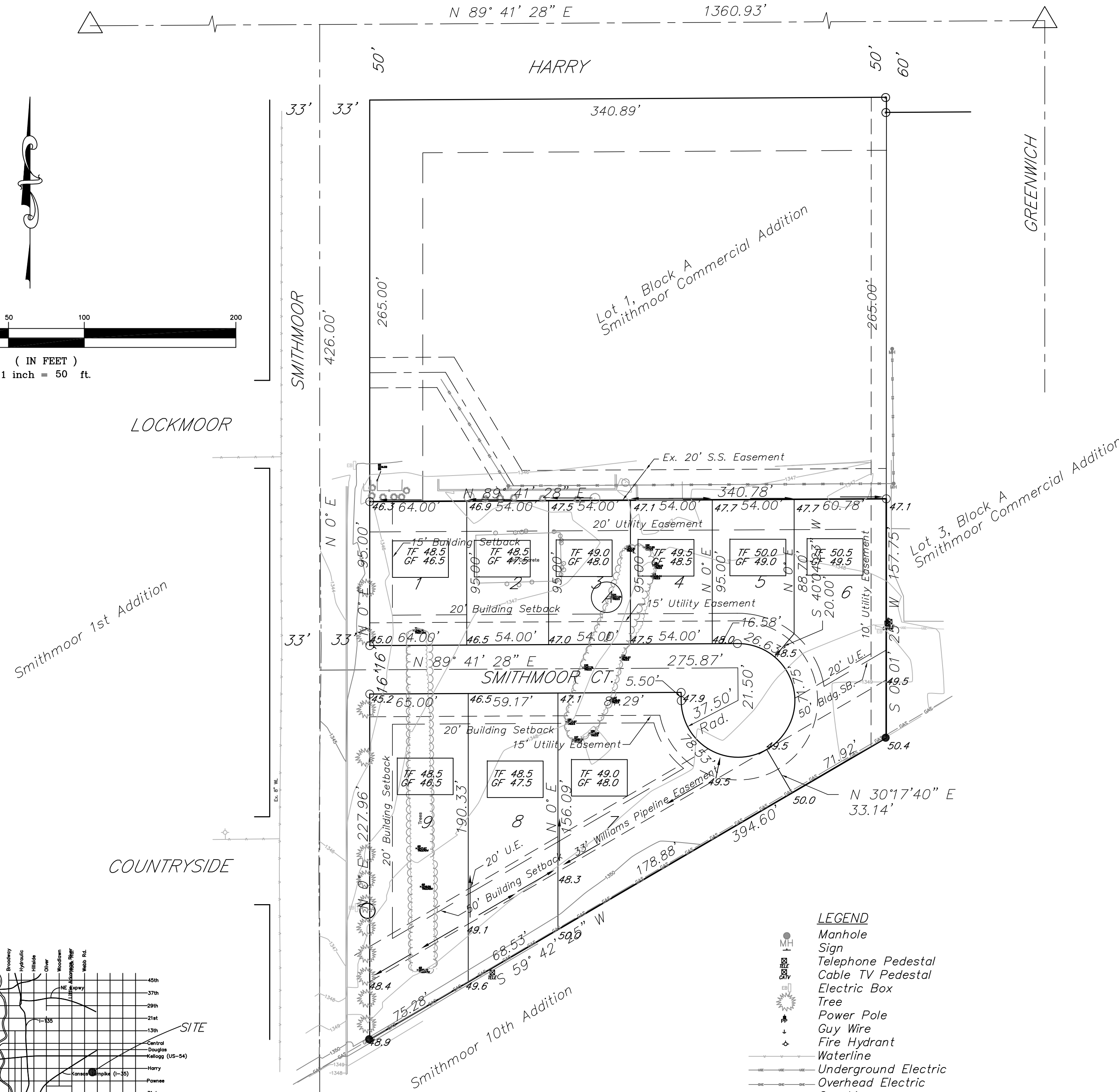
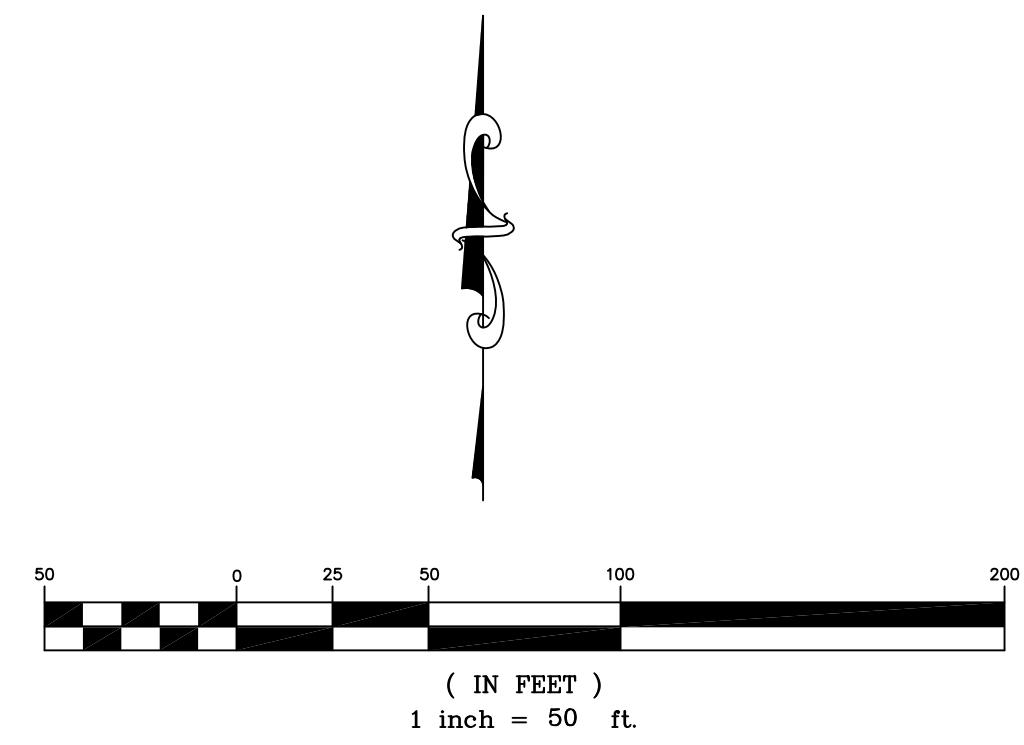
LOT GRADING PLAN SMITHMOOR 11th ADDITION

CITY OF WICHITA, SEDGWICK COUNTY, KANSAS

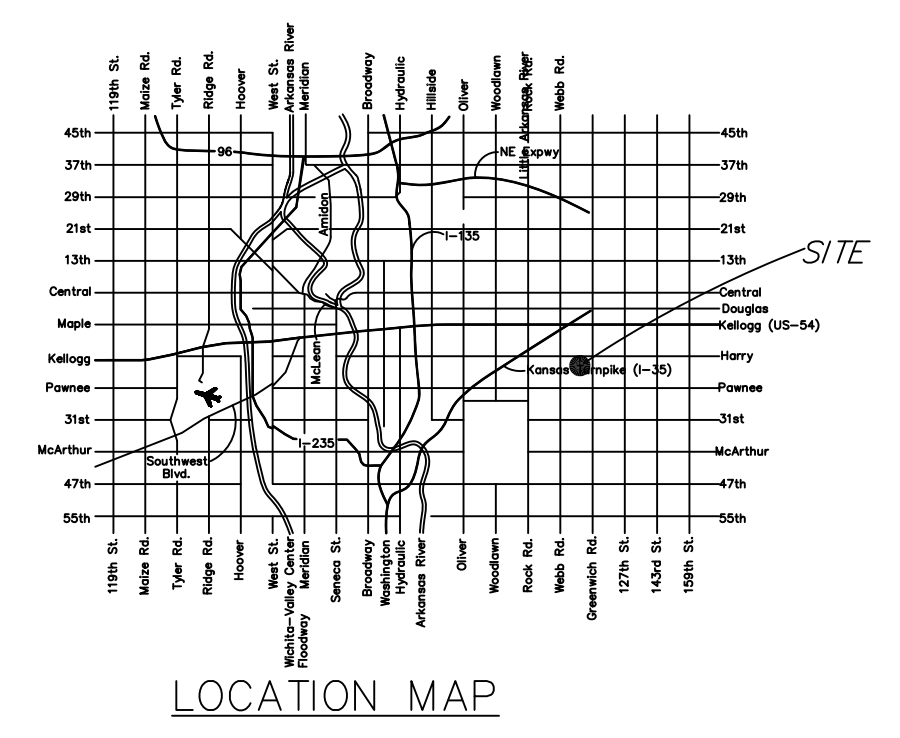
Part of the Northeast 1/4, Section 33, Township 27 South, Range 2 East of the 6th. P.M.

NW Cor. NE 1/4
Sec. 33-27S-2E

NE Cor. NE 1/4
Sec. 33-27S-2E



LOCKMOOR
SMITHMOOR
COUNTRYSIDE



Benchmark:
COW Benchmark NE Corner of Intersection. SW corner
of Conc. base for Traff. sign, light pole.
Elevation 1343.86 NAVD88

- LEGEND**
- Manhole
 - Sign
 - Telephone Pedestal
 - Cable TV Pedestal
 - Electric Box
 - Tree
 - Power Pole
 - Guy Wire
 - Fire Hydrant
 - Waterline
 - Underground Electric
 - Overhead Electric
 - Gas Line
 - Underground Cable TV
 - 5/8" Rebar (found) AMPA
 - Thimble
 - 5/8" Rebar (found)
 - 5/8" Rebar (set) B.WARD

Block #	Acres	Tc	C5	I5	C100	I100	Q5	Q100
Proposed Plat	2.0	15 min	0.33	4.56	0.63	7.37	3.01cfs	9.28cfs

Block #	Acres	Tc	C5	I5	C100	I100	Q5	Q100
Proposed Plat	2.0	15 min	0.61	4.56	0.79	7.37	5.56cfs	11.64cfs

Engineer's Note:
Site drainage calculations developed using the Rational Method for peak runoff. "C" & "I" values established from the City of Wichita Design Criteria and Documentation.

Filename: 080301.dwg \preplat3.dwg Prepared: 3-17-08