

ONE-STEP FINAL PLAT

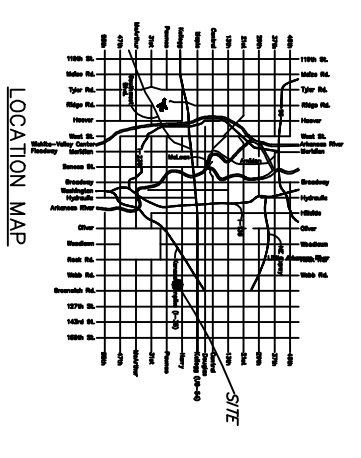
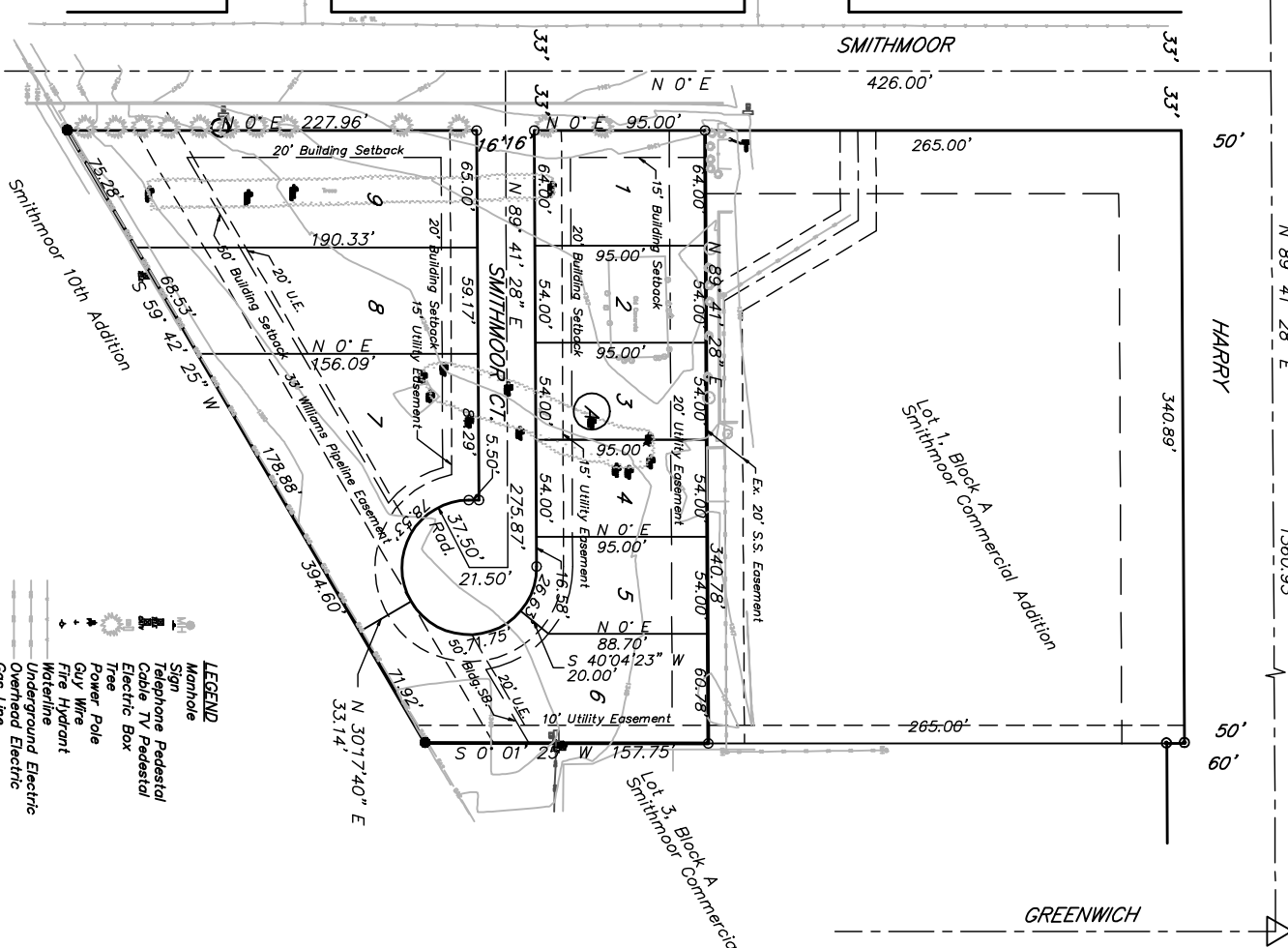
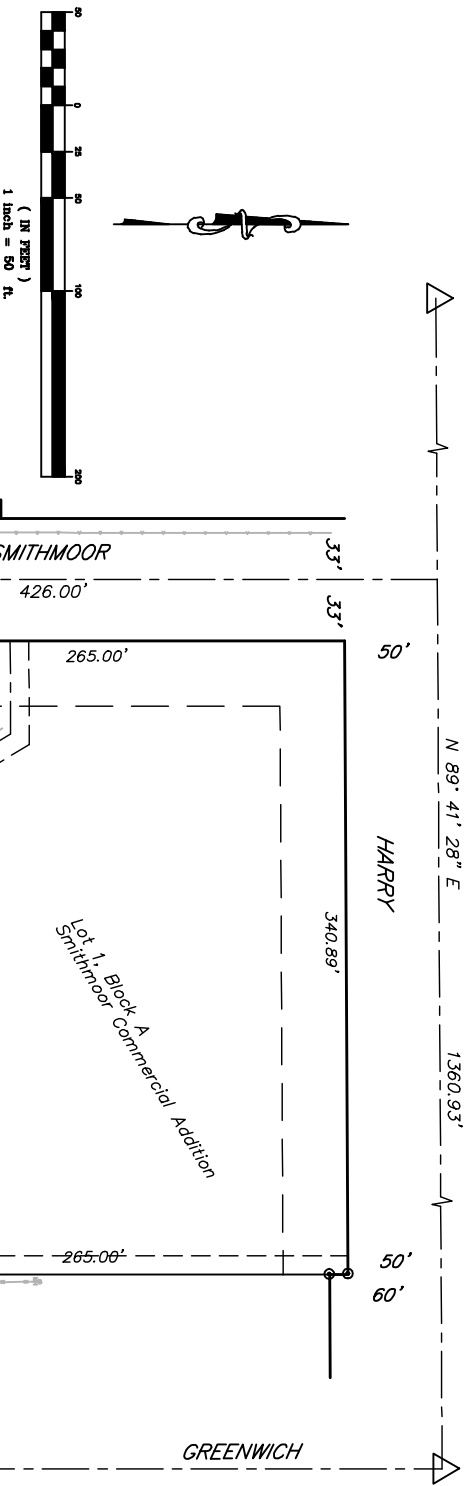
SMITHMOOR 11th ADDITION

A REPLAT OF PART OF LOT 1, BLOCK A, SMITHMOOR COMMERCIAL ADDITION CITY OF WICHITA, SEDGWICK COUNTY, KANSAS

Part of the Northeast 1/4, Section 33, Township 27 South, Range 2 East of the 6th. P.M.

NW Cor. NE 1/4
Sec. 33-27S-2E

NE Cor. NE 1/4
Sec. 33-27S-2E



LEGEND

- Manhole
- Sign
- Telephone Pedestal
- Cable TV Pedestal
- Electric Box
- Tree
- Power Pole
- City Wire
- Fire Hydrant
- Waterline
- Underground Electric
- Overhead Electric
- Gas Line
- Underground Cable TV
- 5/8" Rebar (round) AMPA
- 3/8" Rebar (round)
- 5/8" Rebar (set) B.WARD

Benchmark:
COW Benchmark, NE Corner of Intersection, SW corner
Of Conc. base for Trail, sign, right pole.
Elevation 1343.86 NAVD88

State of Kansas)
County of Sedgewick) ss

I, Bradley C. Ward, a registered land surveyor in aforesaid County and State, do hereby certify that this map or plat and the survey on which it is based was made in accordance with the Minimum Standards for Boundary Surveys.

Said survey is true and correct to the best of my knowledge. All monuments were either found or set.

LEGAL DESCRIPTION
Lot 1, Block A, except the north 265 feet, Smithmoor Commercial Addition, Wichita, Sedgewick County, Kansas. Tract contain 7.9 acres more or less.

Bradley C. Ward, L.S. #920 Date

State of Kansas)
County of Sedgewick) ss

Know all men by these presents, that we, the undersigned, have caused the land described in the surveyor's certificate to be platted into Lots, a Block, and a Street, to be known as Smithmoor 11th Addition, Sedgewick County, Kansas. Any easements are hereby granted as indicated for constructing, maintaining, operating, and repairing public utilities. A Drainage Plan for this addition has been established, and can be obtained from the City of Wichita. Development of any lot will need to conform to this Drainage Plan. The land contained herein is held and shall be conveyed subject to any restrictions, reservations, and covenants on file or hereafter filed in the office of the Register of Deeds of Sedgewick County, Kansas.

By: _____ Date
Smith & Company, Ron Smith, owner

State of Kansas)
County of Sedgewick) ss

This instrument was acknowledged before me on this _____ day of _____, 2008, by Ron Smith, Manager, Smith & Company.

Notary Public _____

My Commission Expires: _____

State of Kansas)
City of Wichita) ss

This plat of Smithmoor 11th Addition, Wichita, Sedgewick County, Kansas, has been submitted to and approved by the Wichita-Sedgewick County Metropolitan Area Planning Commission, Wichita, Kansas. Dated this _____ day of _____, 2008. Wichita-Sedgewick County Metropolitan Area Planning Commission.

Chair
M. S. Mitchell
Secretary
John L. Schlegel

State of Kansas)
City of Wichita) ss
This plat approved and all dedications shown hereon accepted by the City Council of the City of Wichita, Kansas, this _____ day of _____, 2008.

At the Direction of the City Council
Mayor
Carl Brewer
City Clerk
Karen Sublett

Entered on transfer record this _____ day of _____, 2008.
Donald Brace, County Clerk

State of Kansas)
County of Sedgewick) ss

This is to certify that this instrument was filed for record in the Register of Deeds Office, at _____ on the _____ day of _____, 2008, and is duly recorded.

Register of Deeds
Bill Meek

Deputy
Tonya Buckingham

Reviewed in accordance with K.S.A. 58-2005 on this _____ day of _____, 2008.

Tricia L. Robello, L.S. #1246
Deputy County Surveyor
Sedgewick County, Kansas