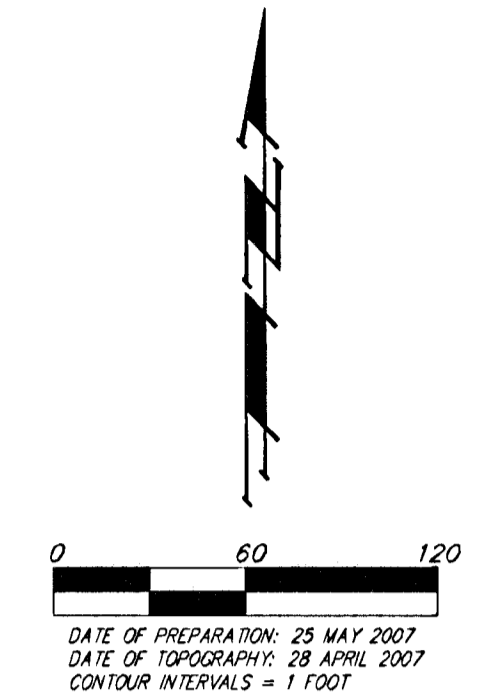


UTILITY PLAN

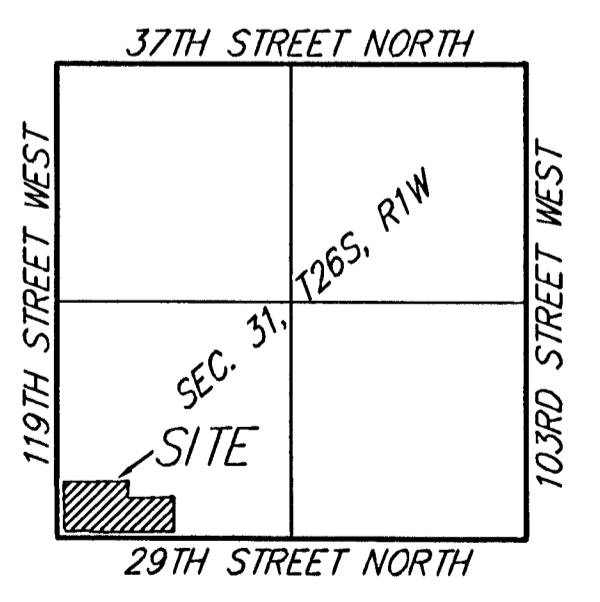
FABER COMMERCIAL ADDITION

WICHITA, SEDGWICK COUNTY, KANSAS



LEGEND

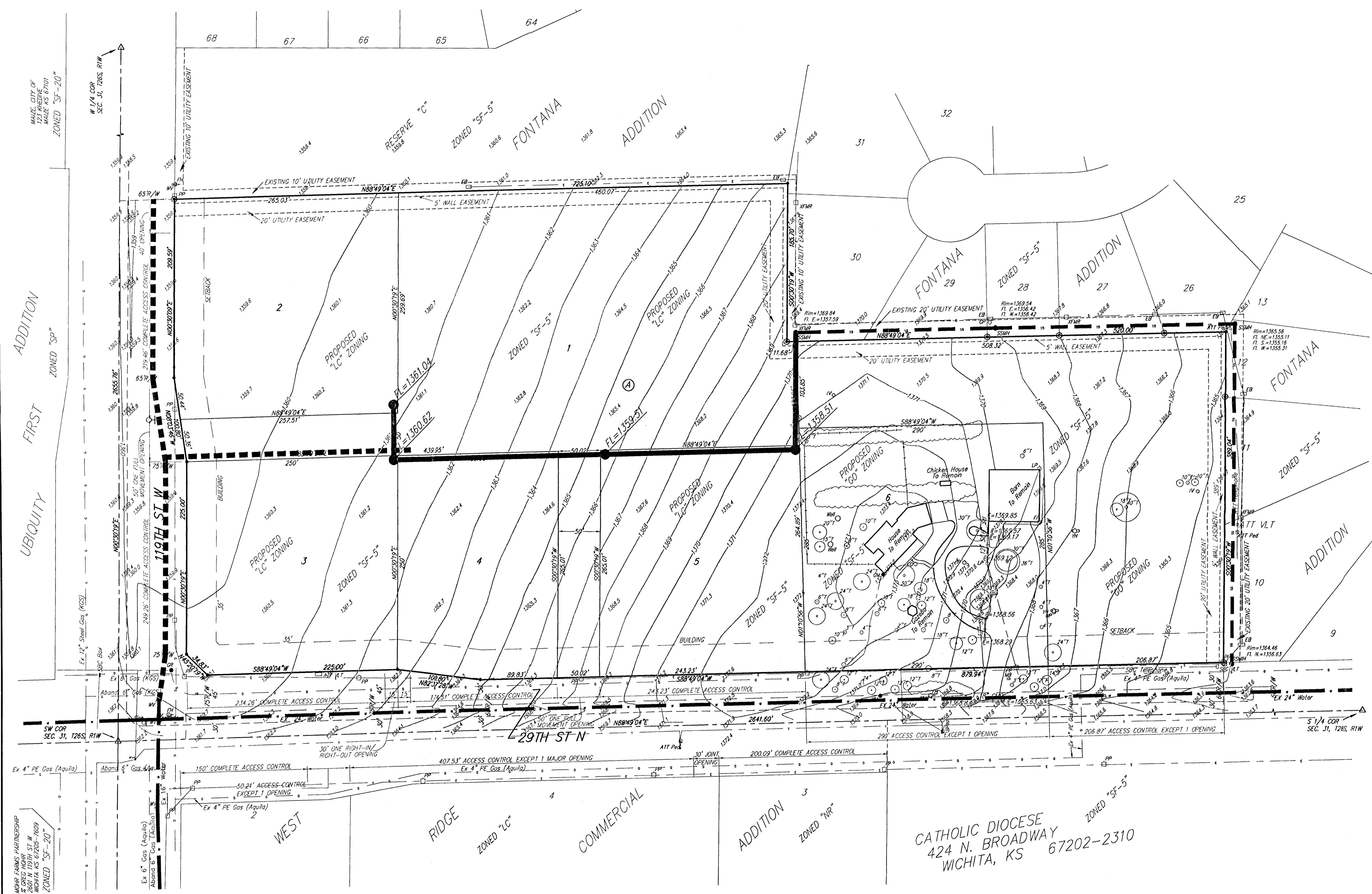
	Proposed Water Line (8" Unless Noted Otherwise)
	Existing Water Line (8" Unless Noted Otherwise)
	Proposed Sanitary Sewer Line (8" Unless Noted Otherwise)
	Existing Sanitary Sewer Line (8" Unless Noted Otherwise)
	Proposed Sanitary Sewer Manhole
	Proposed Fire Hydrant
	Proposed Sanitary Sewer Flow



VICINITY MAP

FABER COMMERCIAL ADDITION

25 MAY 2007
Baughman Company, P.A.
 315 Ellis St. Wichita, KS 67211 P 316-262-7271 F 316-262-0149
 ENGINEERING | SURVEYING | PLANNING | LANDSCAPE ARCHITECTURE
F:\PLAT\FABER COMMERCIAL ADDITION\DWG\FABER.DWG\MOC



CATHOLIC DIOCESE
 424 N. BROADWAY
 WICHITA, KS 67202-2310

MOORE PARTNERSHIP
 2000 NORTH ST. W.
 WICHITA, KS 67205-1009
 ZONED "SF-20"