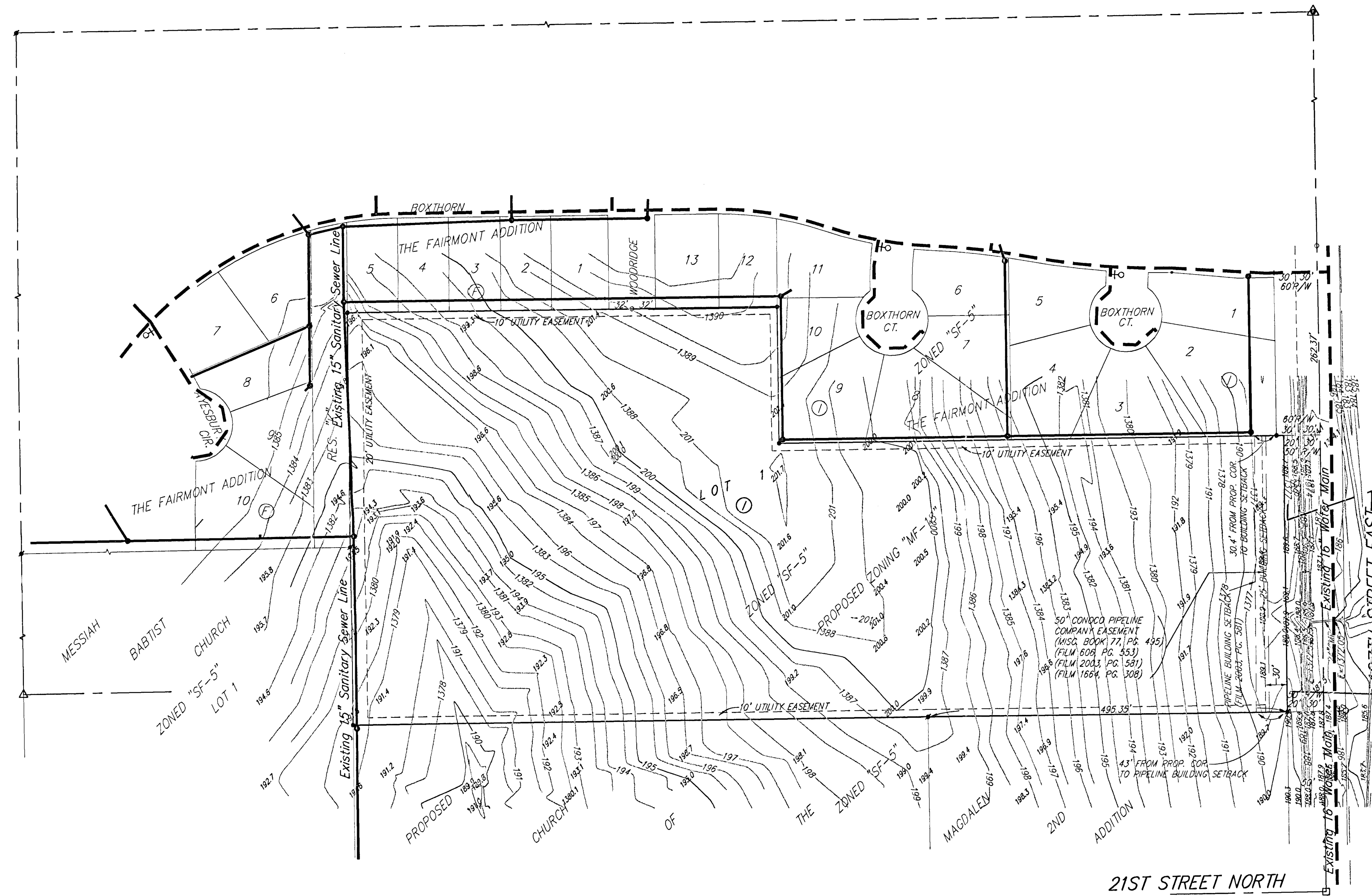


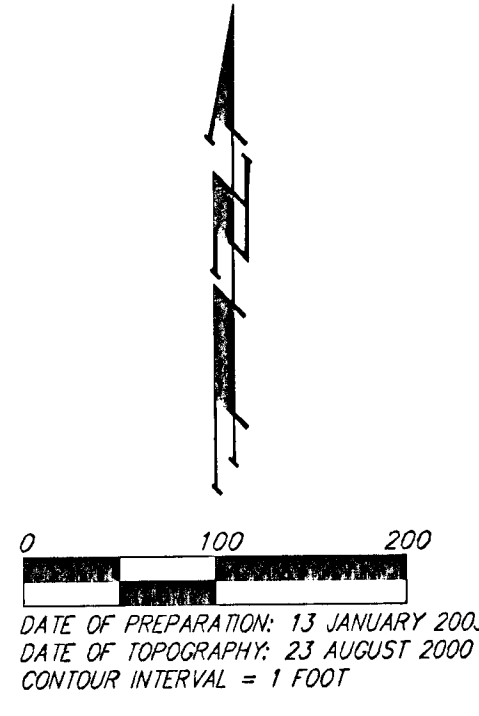
UTILITY PLAN
THE FAIRMONT 2ND
 AN ADDITION TO WICHITA, SEDGWICK COUNTY, KANSAS



LEGEND

- Existing Water Line (8" Unless Noted Otherwise)
- Existing Sanitary Sewer Line (8" Unless Noted Otherwise)
- Proposed Sanitary Sewer Manhole
- ♀ Proposed Fire Hydrant

TWENTY FIRST GROWTH, LLC
 816 TERRADYNE
 ANDOVER, KS 67002
 ZONED "SF-20"



- LEGEND:**
- = #4 REBAR W/ "BAUGHMAN" CAP (SET)
 - = #4 REBAR W/ "BAUGHMAN" CAP (FOUND)
 - = 3/4" IRON (FOUND)
 - △ = #5 REBAR W/ "TORGY" CAP (FOUND)
 - ▲ = #4 REBAR OVER STONE (FOUND)
 - = 1" NOTCH (SET)
 - = 4" x 2" STEEL BRIDGE POST (FOUND)
 - x = #4 REBAR W/ "SRB" CAP (FOUND)
- (M) = MEASURED
 (P) = PLATTED
 (D) = DESCRIBED
 (C-D) = CALCULATED PER DESCRIBED INFO.
 (C-P) = CALCULATED PER PLATTED INFO.
- BENCHMARK:**
 GREENWICH AND 21ST NORTH
 CITY OF WICHITA BENCHMARK DISC
 41' SOUTH AND 58' WEST OF IRON CTR. LINE BORN
 17.0' SW OF ASPHALT, 14.2' EAST OF FACE P.P.
 17.0' WEST OF FACE P.P.
 ELEVATION = 113.38 (CITY DATUM), 1361.38 NGVD
- TOP OF IRON - SE COR. SE 1/4, SEC. 3,
 TWP. 27-S, R. 2-E, (127TH ST. EAST &
 21ST ST. NORTH).
 ELEV. = 198.01 (CITY DATUM), 1385.41 NGVD**

MINIMUM BUILDING PAD ELEVATIONS FOR
 LOWEST OPENING TO THE STRUCTURES

LOT(S)	BLOCK	ELEVATION	
		CITY DATUM	NGVD29
1	A	9999	9999

NOTE:
 A master grading plan for drainage has been developed for this subdivision and is on file with the City of Wichita, Kansas. All drainage easements, right-of-ways, or reserves shall remain at established grades or as modified with the approval of the City Engineer of the City of Wichita, Kansas. No obstructions which impede the flow of this drainage system be allowed.

