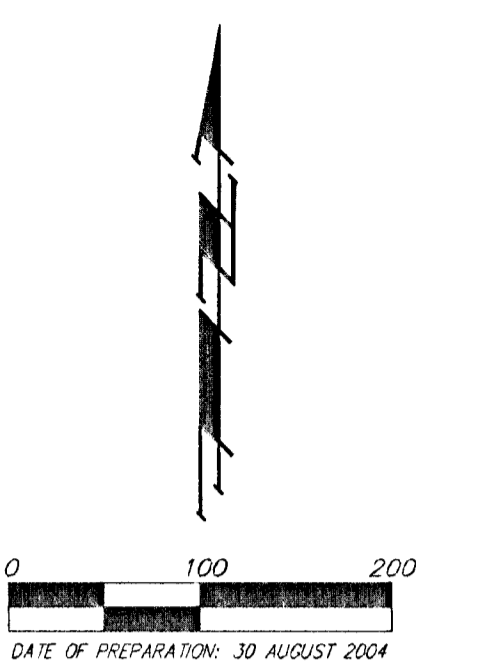
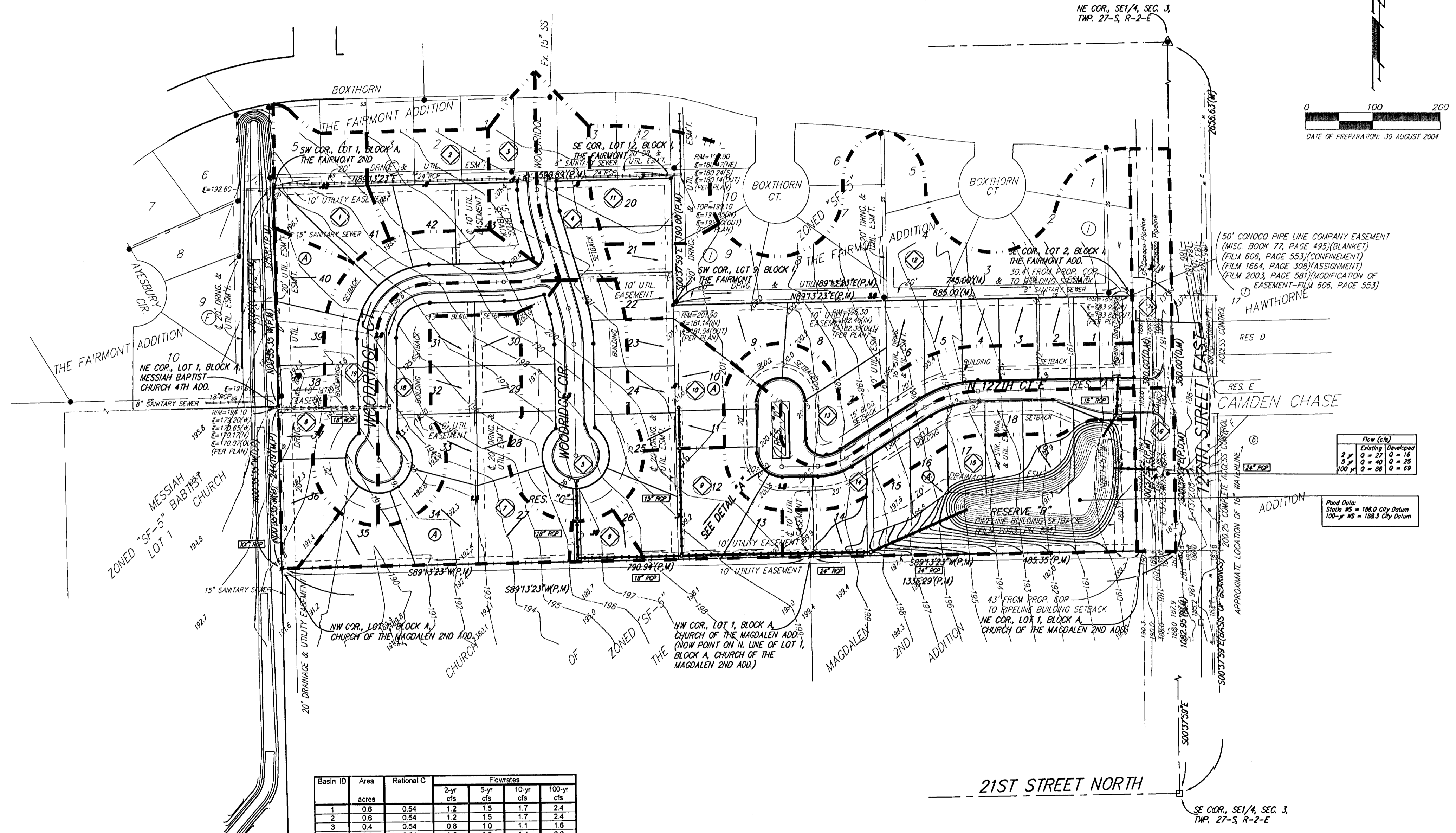


# DRAINAGE PLAN

## THE FAIRMONT 3RD

### AN ADDITION TO WICHITA, SEDGWICK COUNTY, KANSAS



MINIMUM BUILDING PAD ELEVATIONS FOR LOWEST OPENING TO THE STRUCTURES

LOT	BLOCK	ELEVATION	
		NGVD29	NGVD29
36-40	A	1383.9	196.5
14-19	A	1376.5	189.1

Basin ID	Area acres	Rational C	Flowrates			
			2-yr cfs	5-yr cfs	10-yr cfs	100-yr cfs
1	0.6	0.54	1.2	1.5	1.7	2.4
2	0.6	0.54	1.2	1.5	1.7	2.4
3	0.4	0.54	0.8	1.0	1.1	1.8
4	0.5	0.54	1.0	1.2	1.4	2.0
5	2.0	0.54	4.1	5.0	5.8	8.0
6	0.8	0.54	1.5	1.9	2.1	3.0
7	1.2	0.54	2.5	3.0	3.4	4.8
8	0.2	0.54	0.4	0.5	0.6	0.8
9	0.7	0.54	1.4	1.7	2.0	2.8
10	0.9	0.54	1.2	1.5	1.7	2.4
11	0.7	0.54	1.4	1.7	2.0	2.8
12	3.6	0.54	7.4	9.0	10	14
13	1.0	0.54	2.1	2.5	2.9	4.0
14	1.2	0.54	2.5	3.0	3.4	4.8
15	1.8	0.54	3.7	4.5	5.1	7.2
16	0.4	0.54	0.8	1.0	1.1	1.8
17	0.5	0.54	1.0	1.2	1.4	2.0
18	0.9	0.54	1.8	2.2	2.5	3.6
19	1.1	0.54	2.3	2.7	3.1	4.4

Flow (cfs)	
Existing	Downspout
2.5	0 = 27
3.5	0 = 40
100	0 = 68

Pond Date:  
Slope 40' = 108.0 City Datum  
Slope 40' = 188.3 City Datum