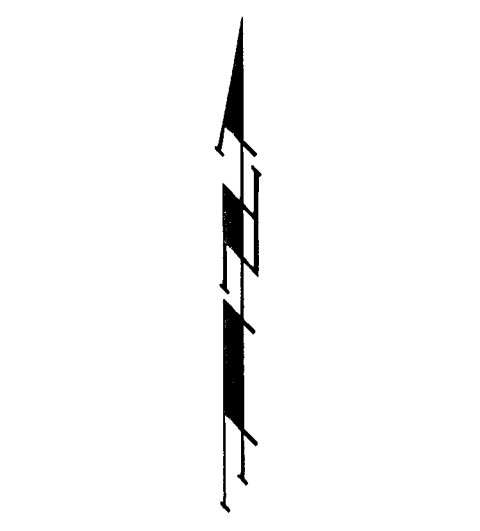
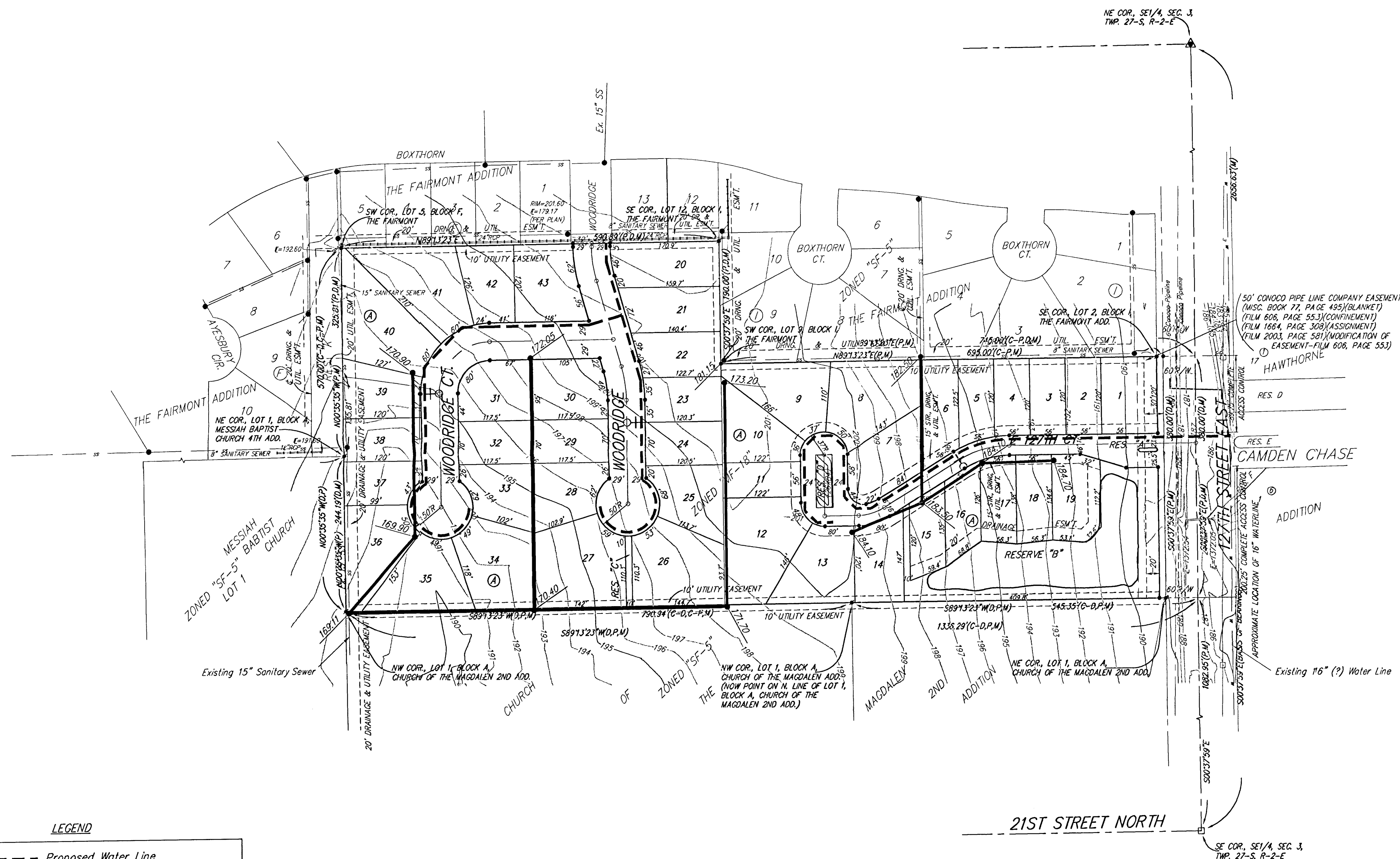


UTILITY PLAN
THE FAIRMONT 3RD
 AN ADDITION TO WICHITA, SEDGWICK COUNTY, KANSAS



DATE OF PREPARATION: 26 JULY 2004
 DATE OF TOPOGRAPHY: 23 AUGUST 2000
 CONTOUR INTERVALS = 1 FOOT

OWNER:
 RITCHIE DEVELOPMENT CORPORATION
 8100 E. 22ND
 WICHITA, KS 67228
 316-684-7300

LEGAL DESCRIPTION:
 A REPLAT OF LOT 1, BLOCK A, THE FAIRMONT 2ND ADDITION,
 WICHITA, SEDGWICK COUNTY, KANSAS.

BENCHMARK:
 GREENWICH AND 21ST NORTH
 CITY OF WICHITA BENCHMARK DISC
 41' SOUTH AND 58' WEST OF IRON CTR. LINE BOTH
 12.0' SW OF ASPHALT, 14.2' EAST OF FACE P.P.
 12.0' WEST OF FACE P.P.
 ELEVATION = 173.98 (CITY DATUM), 1361.38 NGVD

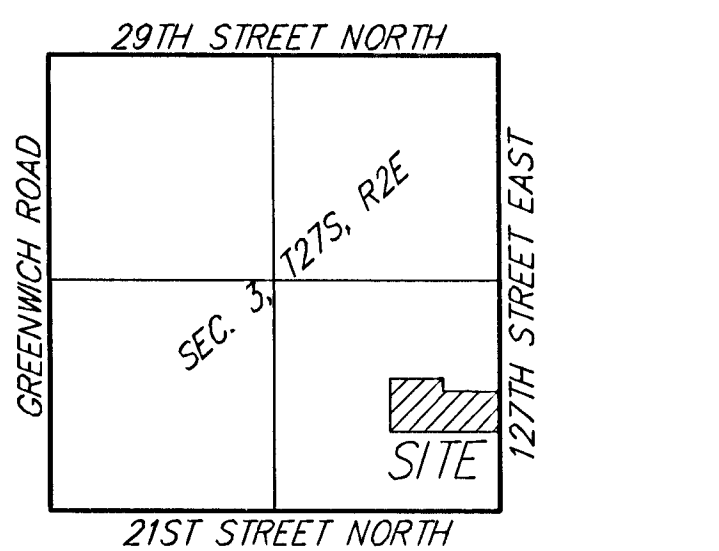
COUNTY "C" CUT, SOUTH HEADWALL,
 1.2 MILE WEST OF 127TH ST. EAST
 ON 37TH STREET NORTH.
 ELEV. = 185.83 (CITY DATUM), 1373.23 NGVD

TOP OF IRON - SE COR., SE 1/4, SEC. 3,
 TWP. 27-S, R-2-E, (127TH ST. EAST &
 21ST ST. NORTH).
 ELEV. = 198.01 (CITY DATUM), 1385.41 NGVD

- #4 REBAR W/ "BAUGHMAN" CAP (SET)
- #4 REBAR W/ "BAUGHMAN" CAP (FOUND)
- 3/4" IRON (FOUND)
- ▲ #4 REBAR OVER STONE (FOUND)

- (M) = MEASURED
- (P) = PLATTED
- (D) = DESCRIBED
- (C-D) = CALCULATED PER DESCRIBED INFO
- (C-P) = CALCULATED PER PLATTED INFO

- PP □ = Power Pole
- PM □ = Pipeline Marker



LEGEND

--- (dashed line)	Proposed Water Line (8" Unless Noted Otherwise)
— (solid line)	Existing Water Line (8" Unless Noted Otherwise)
--- (dashed line)	Proposed Sanitary Sewer Line (8" Unless Noted Otherwise)
— (solid line)	Existing Sanitary Sewer Line (8" Unless Noted Otherwise)
● (circle with cross)	Proposed Sanitary Sewer Manhole
♀ (female symbol)	Proposed Fire Hydrant
XXXX.XX (line with arrows)	Proposed Sanitary Sewer Flow

RESERVE "A" IS RESERVED FOR ENTRY MONUMENTS, LANDSCAPING,
 DRAINAGE PURPOSES, OPEN SPACE, STREETS, AND UTILITIES.

RESERVE "B" IS RESERVED FOR LAKES, DRAINAGE PURPOSES, OPEN
 SPACES, BERMS, AND UTILITIES AS CONTINUED TO EASEMENTS.

RESERVE "C" IS RESERVED OPEN SPACE, LANDSCAPING, AND PEDESTRIAN
 ACCESS.

RESERVE "D" IS RESERVED FOR OPEN SPACE, LANDSCAPING, STREETS,
 PARKING, DRAINAGE PURPOSES, AND UTILITIES.