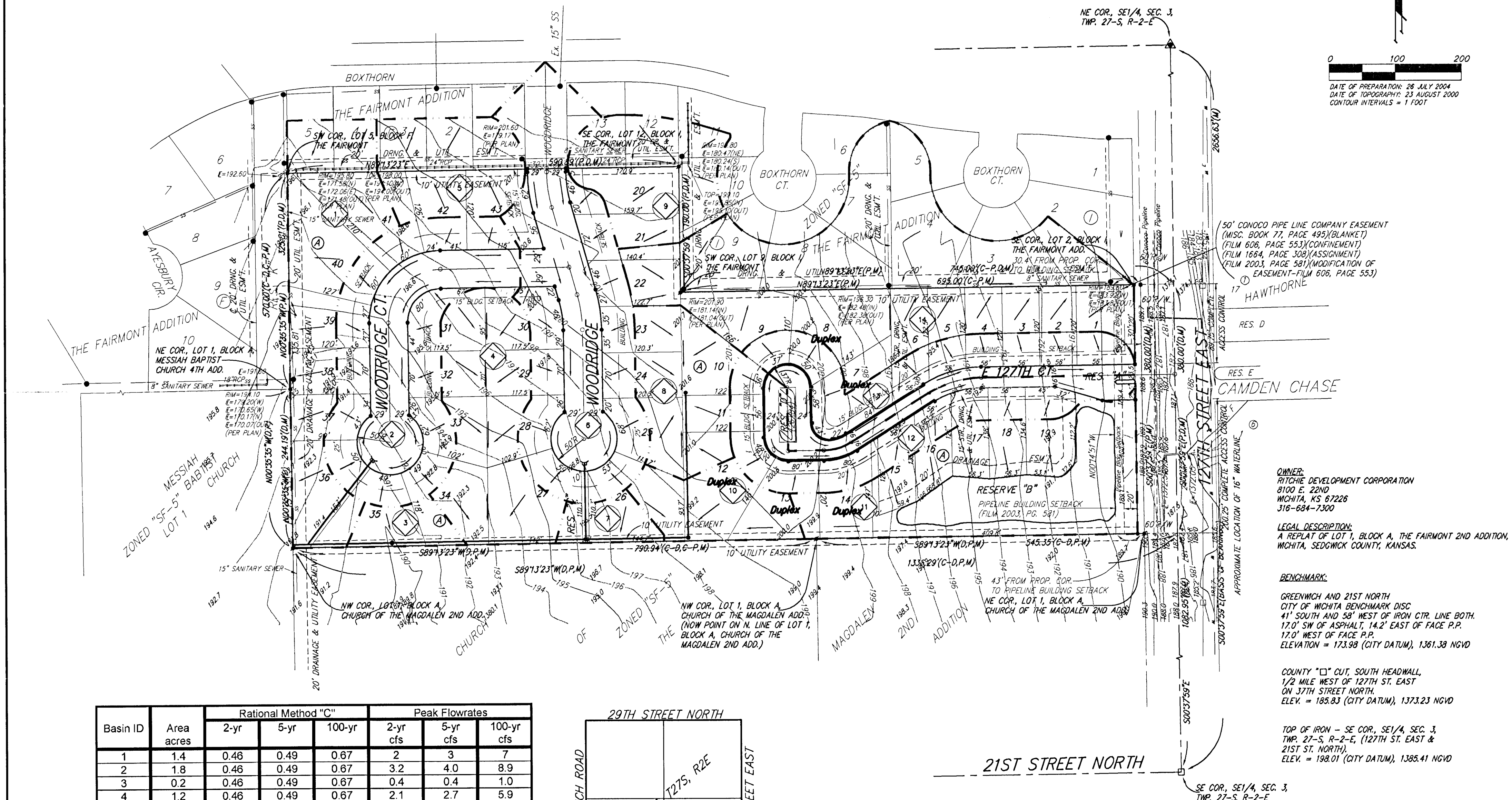


DRAINAGE CONCEPT THE FAIRMONT 3RD AN ADDITION TO WICHITA, SEDGWICK COUNTY, KANSAS



0 100 200
 DATE OF PREPARATION: 28 JULY 2004
 DATE OF TOPOGRAPHY: 23 AUGUST 2000
 CONTOUR INTERVALS = 1 FOOT

50' CONVOY PIPE LINE COMPANY EASEMENT
 (MISC. BOOK 77, PAGE 495) (BLANKET)
 (FILM 606, PAGE 553) (CONFINEMENT)
 (FILM 186A, PAGE 508) (ASSIGNMENT)
 (FILM 2003, PAGE 581) (MODIFICATION OF
 EASEMENT-FILM 606, PAGE 553)

OWNER:
 RITCHE DEVELOPMENT CORPORATION
 8100 E. 22ND
 WICHITA, KS 67226
 316-684-7300

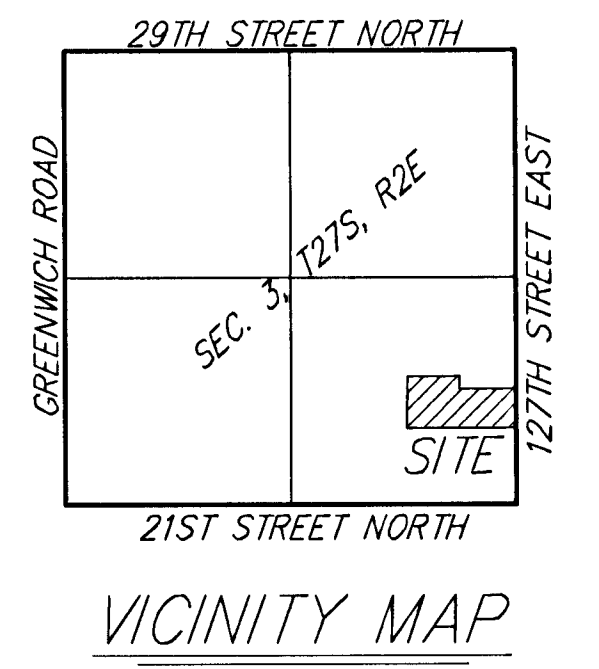
LEGAL DESCRIPTION:
 A REPLAT OF LOT 1, BLOCK A, THE FAIRMONT 2ND ADDITION,
 WICHITA, SEDGWICK COUNTY, KANSAS.

BENCHMARK:
 GREENWICH AND 21ST NORTH
 CITY OF WICHITA BENCHMARK DISC
 41' SOUTH AND 58' WEST OF IRON CTR. LINE BOTH
 17.0' SW OF ASPHALT, 14.2' EAST OF FACE P.P.
 17.0' WEST OF FACE P.P.
 ELEVATION = 173.98 (CITY DATUM), 1361.38 NGVD

COUNTY "C" OUT, SOUTH HEADWALL,
 1/2 MILE WEST OF 127TH ST. EAST
 ON 17TH STREET NORTH
 ELEV. = 185.83 (CITY DATUM), 1373.23 NGVD

TOP OF IRON - SE COR., SE 1/4, SEC. 3,
 TWP. 27-S, R-2-E, (127TH ST. EAST &
 21ST ST. NORTH)
 ELEV. = 198.01 (CITY DATUM), 1385.41 NGVD

Basin ID	Area acres	Rational Method "C"			Peak Flowrates		
		2-yr	5-yr	100-yr	2-yr cfs	5-yr cfs	100-yr cfs
1	1.4	0.46	0.49	0.67	2	3	7
2	1.8	0.46	0.49	0.67	3.2	4.0	8.9
3	0.2	0.46	0.49	0.67	0.4	0.4	1.0
4	1.2	0.46	0.49	0.67	2.1	2.7	5.9
5	0.7	0.46	0.49	0.67	1.2	1.6	3.5
6	2.1	0.46	0.49	0.67	3.7	4.7	10.4
7	0.2	0.46	0.49	0.67	0.4	0.4	1.0
8	0.7	0.46	0.49	0.67	1.2	1.6	3.5
9	0.8	0.46	0.49	0.67	1.4	1.8	4.0
10	0.5	0.46	0.49	0.67	0.9	1.1	2
11	1.7	0.46	0.49	0.67	3.0	3.8	8.4
12	1.1	0.46	0.49	0.67	1.9	2.5	5.4
13	1.1	0.46	0.49	0.67	1.9	2.5	5.4
14	3.1	0.46	0.49	0.67	5.5	6.9	15.3



RESERVE "A" IS RESERVED FOR ENTRY MONUMENTS, LANDSCAPING,
 DRAINAGE PURPOSES, OPEN SPACE, STREETS, AND UTILITIES.

RESERVE "B" IS RESERVED FOR LAKES, DRAINAGE PURPOSES, OPEN
 SPACES, BERMS, AND UTILITIES AS CONTAINED TO EASEMENTS.

RESERVE "C" IS RESERVED OPEN SPACE, LANDSCAPING, AND PEDESTRIAN
 ACCESS.

RESERVE "D" IS RESERVED FOR OPEN SPACE, LANDSCAPING, STREETS,
 PARKING, DRAINAGE PURPOSES, AND UTILITIES.